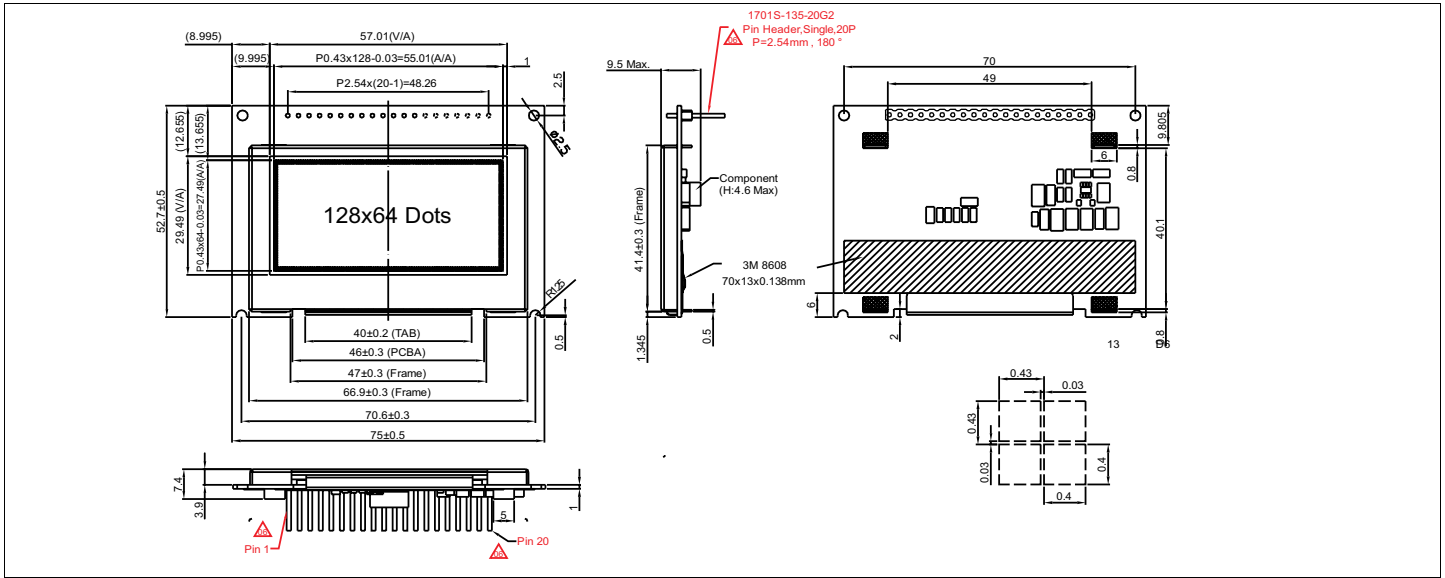


Dimensional Drawing



Features

- Viewing Angle.....Wide (160 degrees)
- High Contrast.....500:1
- Fast Response Time.....10 usec
- Built-in Controller.....SSD1303T10
- Built-in DC/DC Converter (Single power Supply)
- Operating Life Time.....40-66 Khrs (100/60 CD/m²)

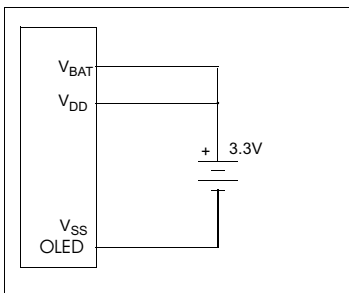
Physical Data

- Module Size.....75.0W x 52.7H x 9.5T mm
- Viewing Area Size.....55.01W x 27.49H mm
- Dot Pitch.....0.43W x 0.43H mm
- Dot Size.....0.40W x 0.40H mm
- Weight.....30.2g±10%

Electrical Characteristics (V_{DD}=3.3±0.115V 25°C)

PARAMETER	SYM	CONDITION	MIN	TYP	MAX	UNIT
OPERATING VOLTAGE	V _{DD}	-	2.4	2.7	3.5	V
OPERATING VOLTAGE	V _{BAT}	-	2.8	3.3	5.0	V
INPUT HIGH VOLTAGE	V _{IH}	-	0.8V _{DD}	-	V _{DD}	V
INPUT LOW VOLTAGE	V _{IL}	-	0	-	0.1V _{DD}	V
OPERATING CURRENT	I _{DD}	All pixels on	-	190	-	uA
OPERATING CURRENT	I _{BAT}	All pixels on	-	140	150	mA
POWER CONSUMPTION	P _D	All pixels on	-	462	495	mW
BRIGHTNESS	L	Average	-	80	-	cd/m ²
FRAME RATE	85Hz					

Power Supply



Absolute Maximum Ratings

PARAMETER	SYMBOL	MIN	MAX	UNIT
SUPPLY VOLTAGE 1	V _{DD} -V _{SS}	-0.3	3.5	V
SUPPLY VOLTAGE 2	V _{BAT}	1.8	6	V
INPUT VOLTAGE	V _{IN}	-0.3	V _{DD} +0.3	V
OPERATING TEMPERATURE	T _{OP}	-40	85	°C
STORAGE TEMPERATURE	T _{STG}	-40	85	°C

Pin Connections

PIN NO.	SYMBOL	FUNCTION	
1	GND	I	Ground
2	VDD	I	Logic Voltage Power Supply
3	VBAT	I	Analog Power Supply (DC/DC)
4	D/C	H/L	Data/CommandControl Input
5	WR#	L	Write Data Signal Input
6	RD#	L	Read Data Signal Input
7	Db0	H/L-	8 Bit MCU Interface
8	Db1		
9	Db2		
10	Db3		
11	Db4		
12	Db5		
13	Db6		
14	Db7		
15	CS#	L	Chip select input
16	NC	-	No Connection
17	RES#	L	Hardware reset input
18	NC	-	No Connection
19	NC	-	No Connection
20	DISB	H	DC/DC shut-down Control Input

