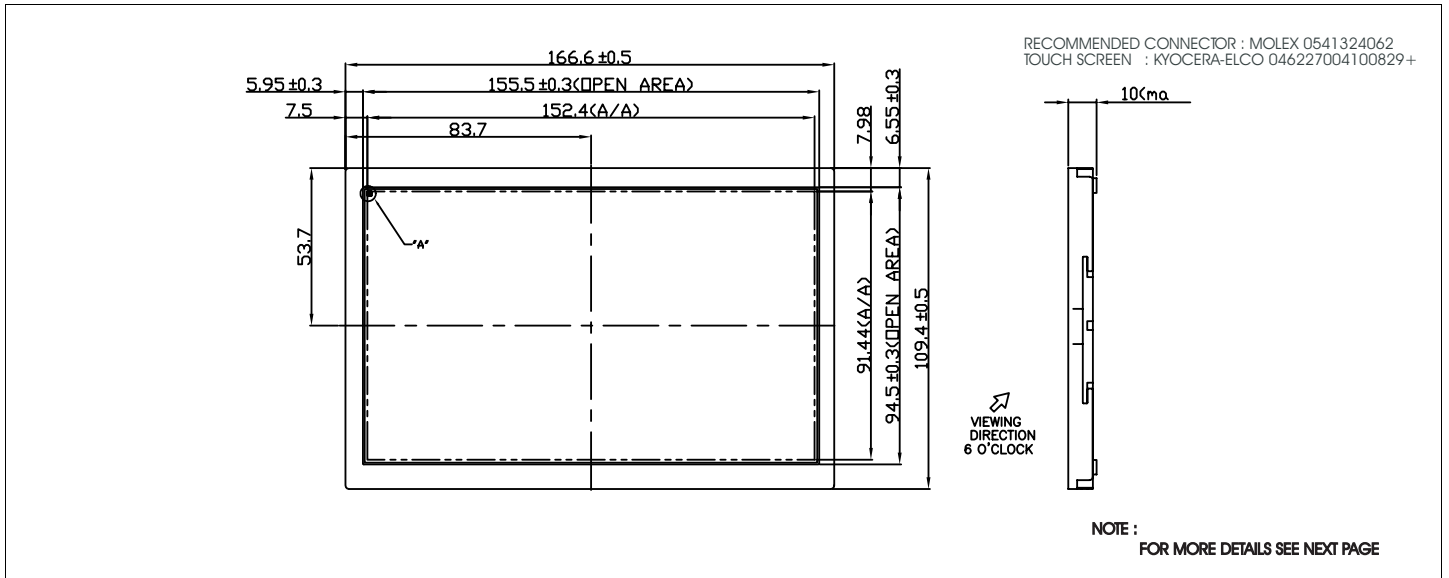


HDA700L-1

Dimensional Drawing

7", WVGA (800 X480) , TFT Color Graphics ,White LED Backlight



Features

Viewing Angle(H/V).....130/120 degrees
High Contrast.....250:1
Fast Response Time(R/F).....15 msec
Built-in Controller.....none
Touch Screenoptional
High Brightness.....500 cd/m²

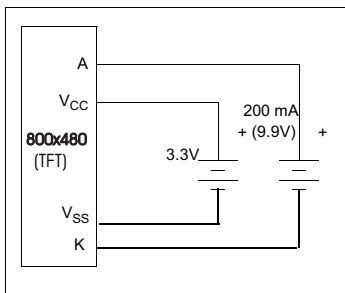
Physical Data

Module Size.....166.6W x109.4H x10.0T mm
Viewing Area Size.....152.4W x91.44 H mm
Dot Pitch.....0.0635W x 0.1905H mm
Weight.....164 g

Electrical Characteristics (V_{CC}=3.3±0.125V 25°C)

PARAMETER	SYM	CONDITION	MIN	TYP	MAX	UNIT
OPERATING VOLTAGE	V _{CC}	-	3.0	3.3	3.6	V
OPERATING VOLTAGE W. LED	V	-	-	9.0	-	V
INPUT HIGH VOLTAGE	V _{IH}	-	0.7*V _{CC}	-	V _{CC}	V
INPUT LOW VOLTAGE	V _{IL}	-	0	-	0.3*V _{CC}	V
OPERATING CURRENT	I _{CC}	V _{CC} = 3.3V	-	190	266	mA
OPERATING CURRENT W. LED	I _{LED}	-	-	200	-	mA
POWER CONSUMPTION	P	Logic only	-	0.627	0.877	W
BRIGHTNESS	L	-	450	500	-	cd/m ²

Power Supply



Pin Connections

PIN NO.	SYMBOL		FUNCTION
1	Vcc	-	Power Supply
2	Vcc	-	Power Supply
3	Vcc	-	Power Supply
4	Vcc	-	Power Supply
5	NC	-	No Connection
6	DE	H/L	Display Timing
7	Vss	-	Power Ground
8	NC	-	No Connection
9	Vss	-	Power Ground
10	NC	-	No Connection
11	Vss	-	Power Ground
12-14	B5-B3	H/L	Blue Data 5-3
15	Vss	-	Power Ground
16-18	B2-B0	H/L	Blue Data 2-0
19	Vss	-	Power Ground
20-22	G5-G3	H/L	Green Data 5-3
23	Vss	-	Power Ground
24-26	G2-G0	H/L	Green Data 2-0
27	Vss	-	Power Ground
28-30	R5-R3	H/L	Red Data 5-3
31	Vss	-	Power Ground
32-34	R2-R0	H/L	Red Data 2-0
35	NC	-	No Connection
36	Vss	-	Power Ground
37	Vss	-	Power Ground
38	DCLK	H/L	Data Clock
39	Vss	-	Power Ground
40	Vss	-	Power Ground

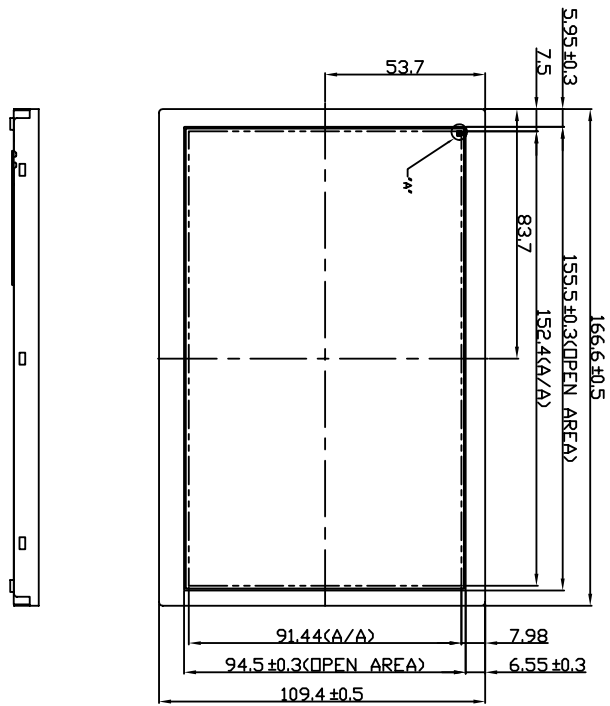
Absolute Maximum Ratings

PARAMETER	SYMBOL	MIN	MAX	UNIT
SUPPLY VOLTAGE	V _{CC}	-0.3	4.3	V
INPUT VOLTAGE	V _{IN}	-0.3	V _{CC} + 0.3	V
OPERATING TEMPERATURE	T _{OP}	-20	+70	°C
STORAGE TEMPERATURE	T _{STG}	-30	+80	°C
BACKLIGHT CURRENT (WHT. LED)	I _{LED}	-	250	mA

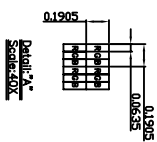
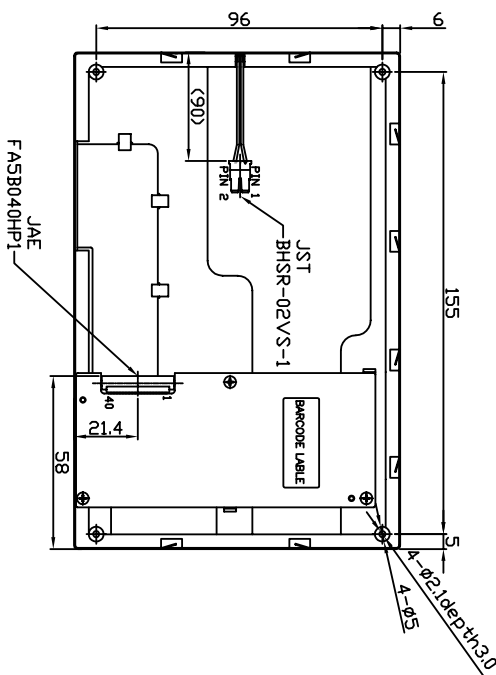
HDA700L-1

Dimensional Drawing

7" ,WVGA (800 X480) , TFT Color Graphics ,White LED Backlight



VIEWING
DIRECTION
FROM TOP



HDA700LT-1

Dimensional Drawing

7" ,WVGA (800 X480) , TFT, with Touch Screen ,White LED Backlight

With TOUCH SCREEN

TOUCH SCREEN CONNECTOR : KYOCERA-ELCO 046227004100829+

