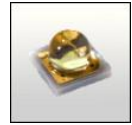


## GT4-OSL SERIES FOR OSRAM'S OSLOM SSL/SX LEDS



- Special care taken to make a uniform white or warm white illumination.
- Lens material optical grade PMMA with high UV and temperature resistance (105°C/220°F). Allows use of high current and temperature conditions
- Best available optical efficiency, up to 90%.
- No lens holder. Fastening to heat sink with droplets of glue
- Please check fastening details from this link:  
[http://www.ledil.com/datasheets/DataSheet\\_GLUES.pdf](http://www.ledil.com/datasheets/DataSheet_GLUES.pdf)

## LENS TYPES

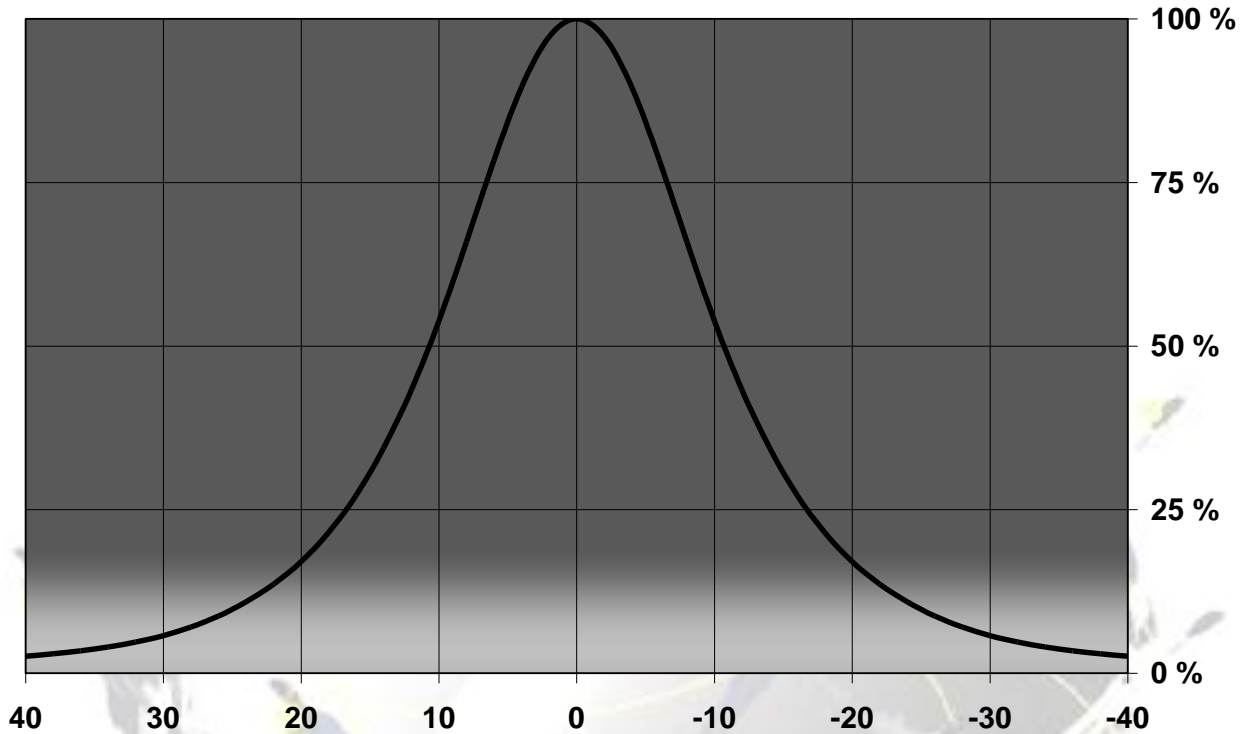
NAME	ORDERING CODE	FWHM
GT4-OSL Smooth Spot	C10921_GT4-OSL-S	±10°
GT4-OSL Medium	C10922_GT4-OSL-M	±14°
GT4-OSL Wide	C10923_GT4-OSL-W	±16°
GT4-OSL WW	C10975_GT4-OSL-WW	±22°

NAME	ORDERING CODE	FWHM
GT4-OSL Smooth Spot	C10921_GT4-OSL-SX-S	To be measured shortly
GT4-OSL Medium	C10922_GT4-OSL-SX-M	To be measured shortly
GT4-OSL Wide	C10923_GT4-OSL-SX-W	To be measured shortly
GT4-OSL WW	C10975_GT4-OSL-SX-WW	To be measured shortly

© Ledil Oy - PRELIMINARY - Subject to change without prior notice

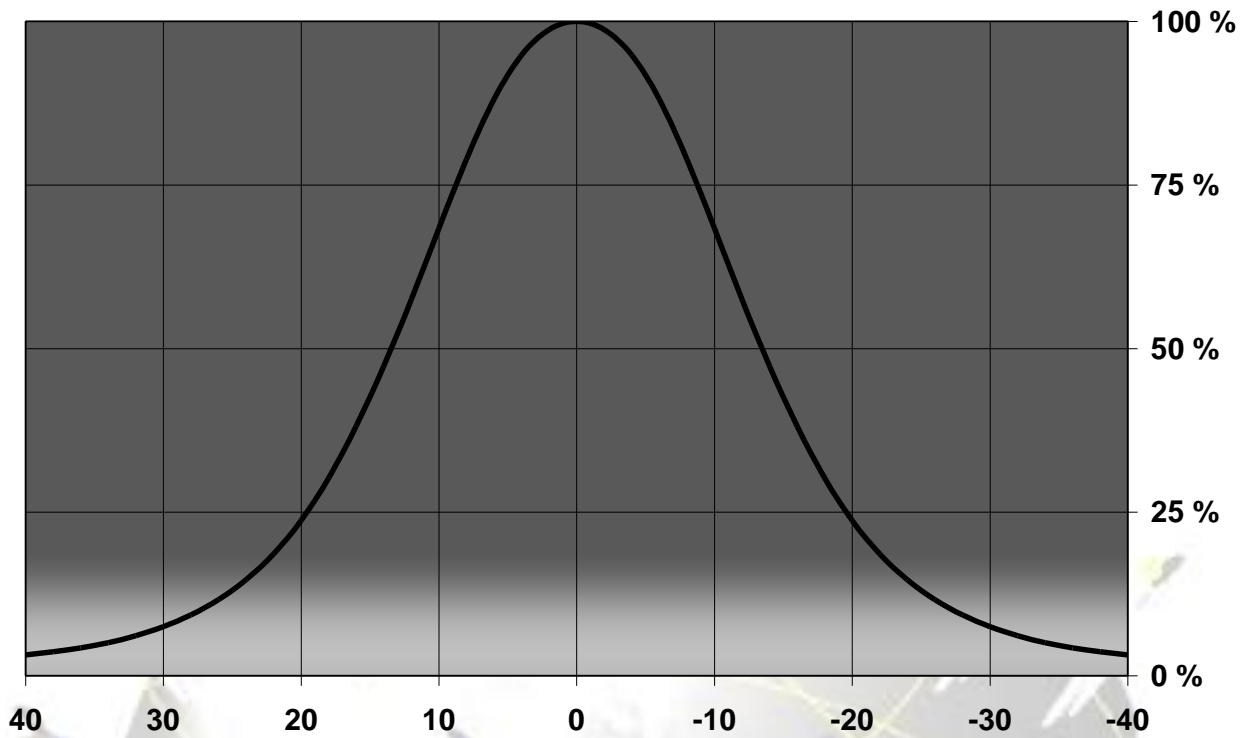
**MEASUREMENT DATA**

Relative Intensity of C10921\_GT4-OSL-S



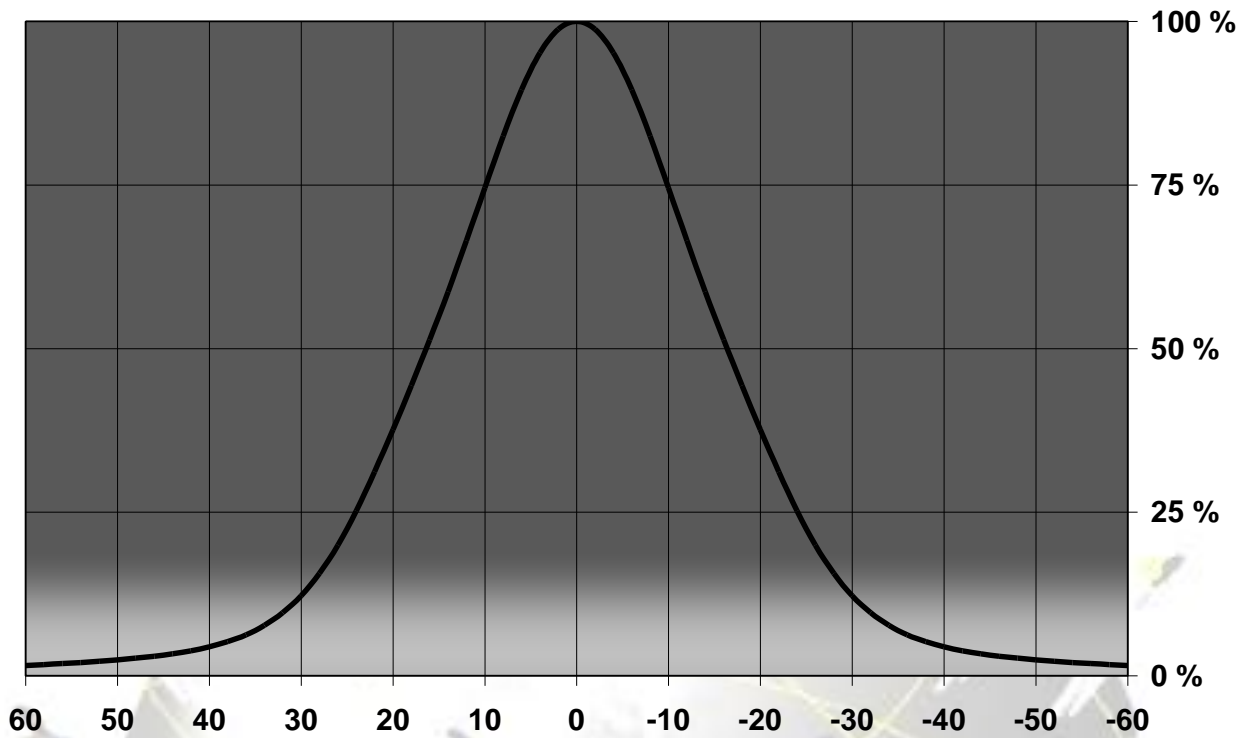
© Ledil Oy - PRELIMINARY - Subject to change without prior notice

Relative Intensity of C10922\_GT4-OSL-M



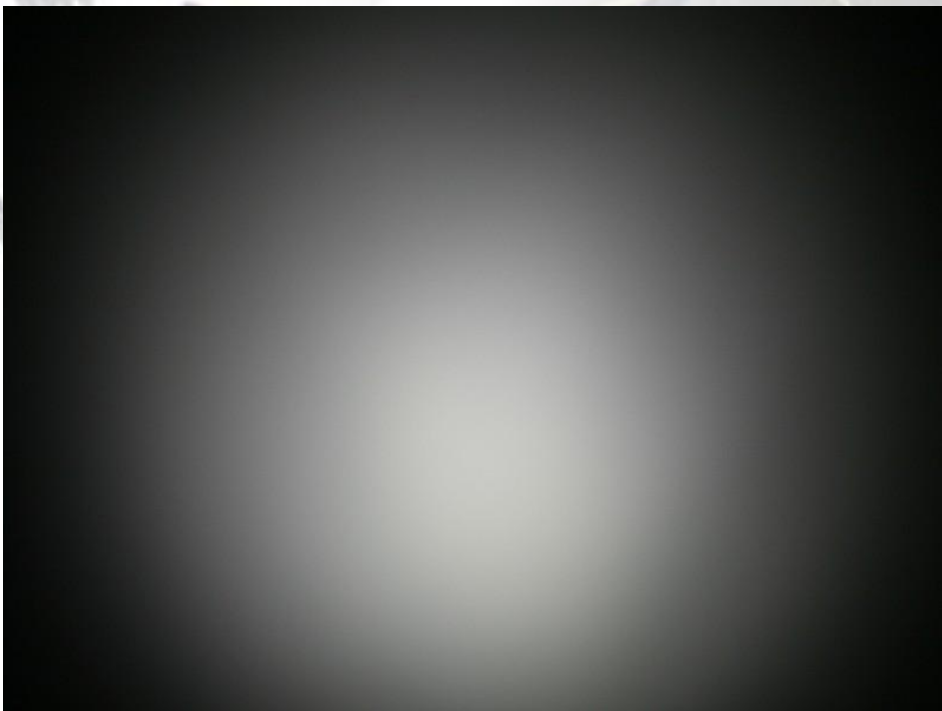
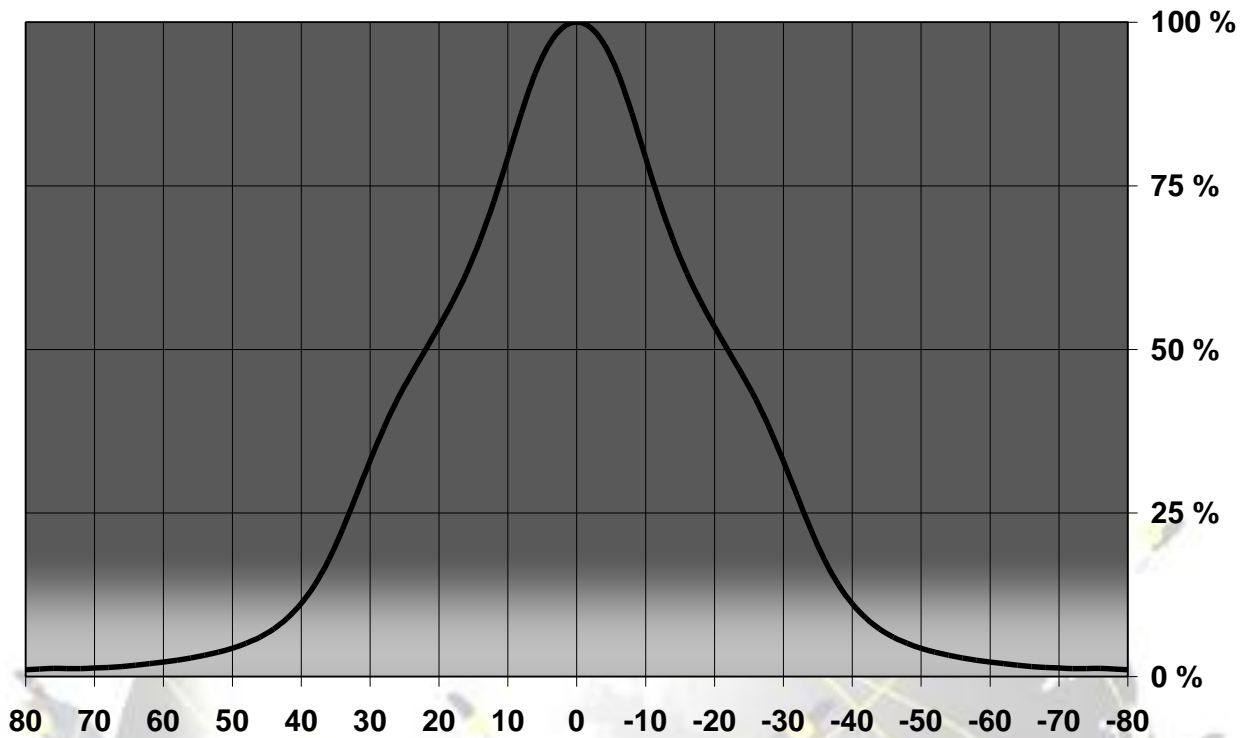
© Ledil Oy - PRELIMINARY - Subject to change without prior notice

Relative Intensity of C10923\_GT4-OSL-W



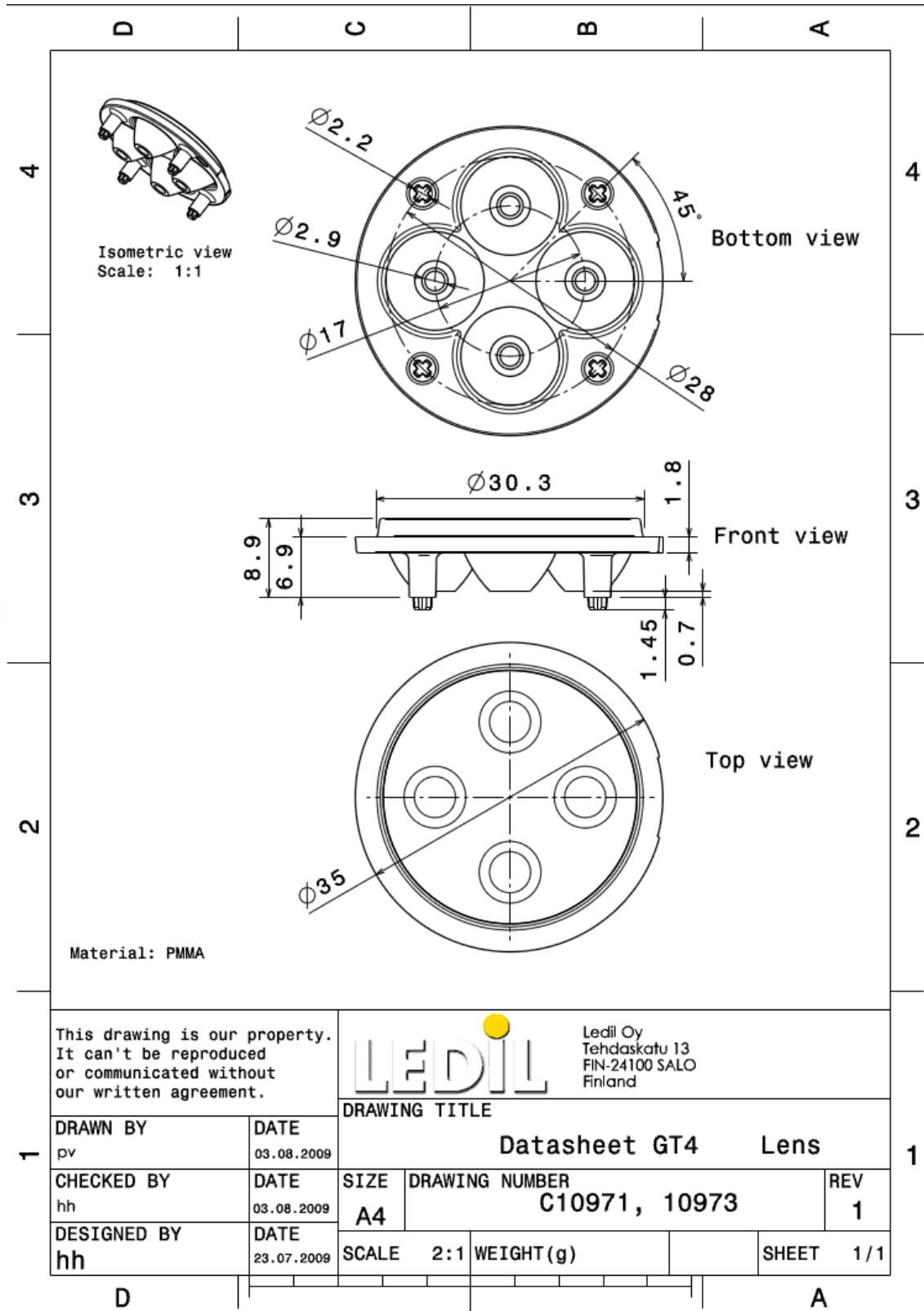
© Ledil Oy - PRELIMINARY - Subject to change without prior notice

Relative Intensity of C10975\_GT4-OSL-WW



© Ledil Oy - PRELIMINARY - Subject to change without prior notice

## DRAWINGS



© Ledil Oy - PRELIMINARY - Subject to change without prior notice