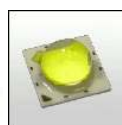


STRADA-B2 LENSES FOR NICHIA 119 / 219 SERIES OF LEDs



- Extremely wide street light design with very wide horizontal and vertical angle.
- Special care taken to make a uniform white or warm white illumination.
- Lens material optical grade PMMA with high UV and temperature resistance (105°C/220°F)
- Best available optical efficiency, approximately 96%.
- Fastening to heat sink with positioning pins or with PU foam adhesive tape of automotive grade, please select which suits the best for your needs.
- Please check fastening details from this link:
(http://www.ledil.com/datasheets/DataSheet_TAPE.pdf)

LENS TYPES

NAME	ORDERING CODE	FWHM Angle
Strada-B2	C10949_Strada-B2-N19	To be measured shortly
Strada-B2 -tape	CA10950_Strada-B2-N19-tape	To be measured shortly

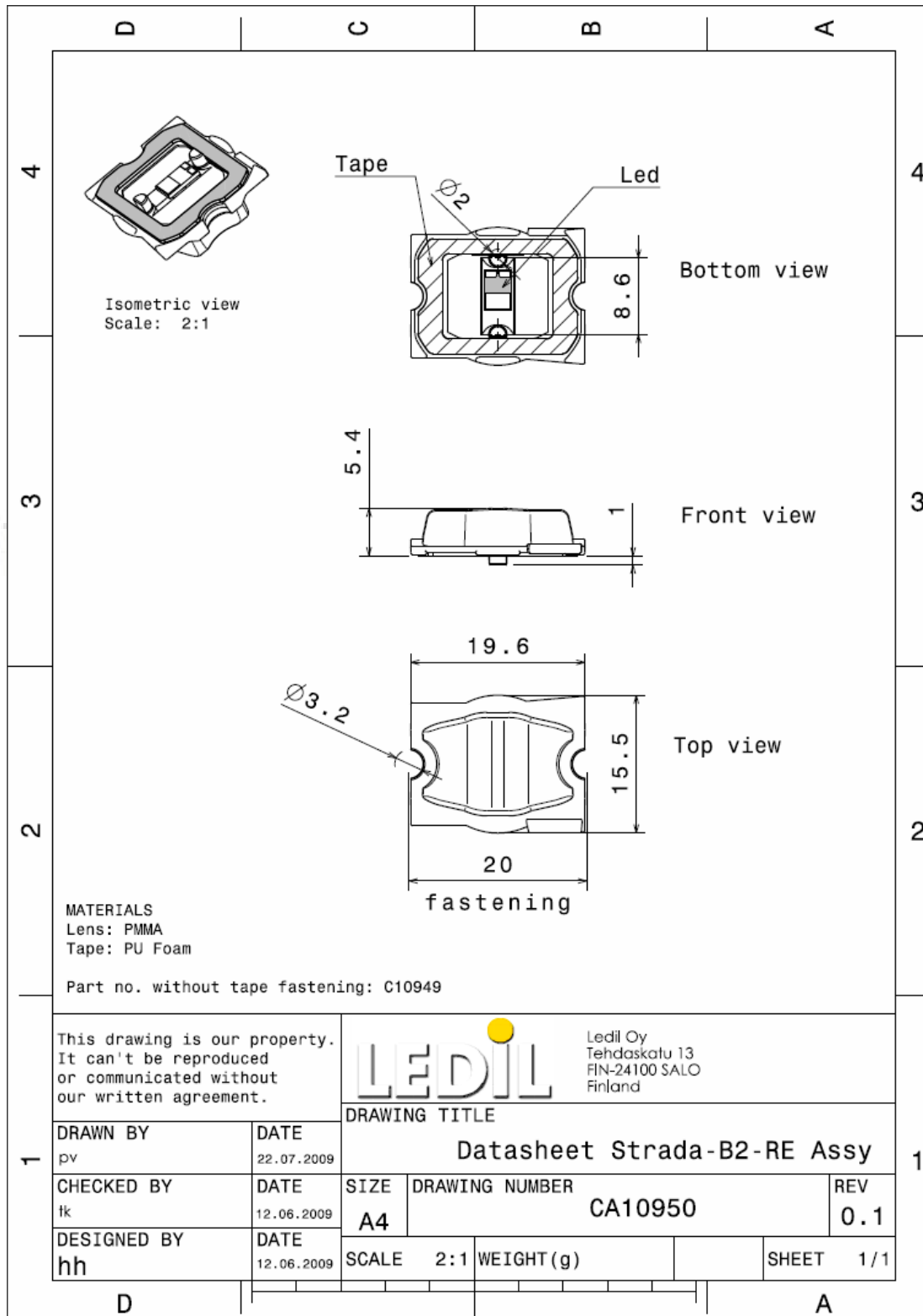
© Ledil Oy – PRELIMINARY - Subject to change without prior notice

MEASUREMENT DATA

COMING SOON



DRAWINGS



EULUMDAT & IES FILES AVAILABLE BY REQUEST

© Ledil Oy – PRELIMINARY - Subject to change without prior notice