

## LISA2-CLIP16 SERIES FOR NICHIA 119 / 219 LEDs



- Lens material optical grade PMMA with high UV and temperature resistance (105°C/220°F). Lens holder molded of high quality black PC.
- High optical efficiency, up to 90%. Expect LISA2-O 75%
- Integrated holder with small snap clips. See drawing below for more details of fastening the holder to PCB.
- Very small and compact dimensions: Diameter 9.9 mm, height 6.8 mm.

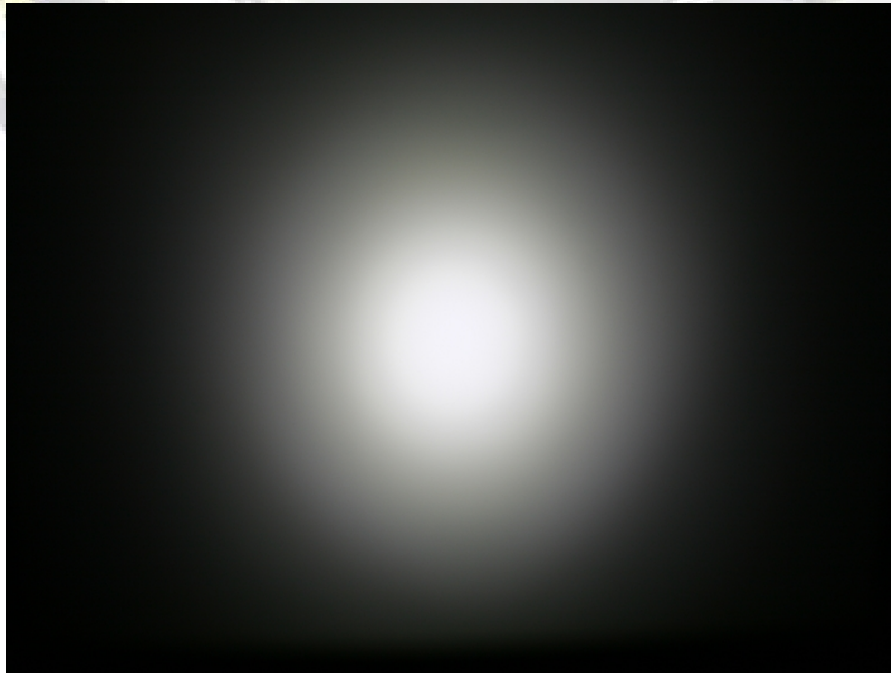
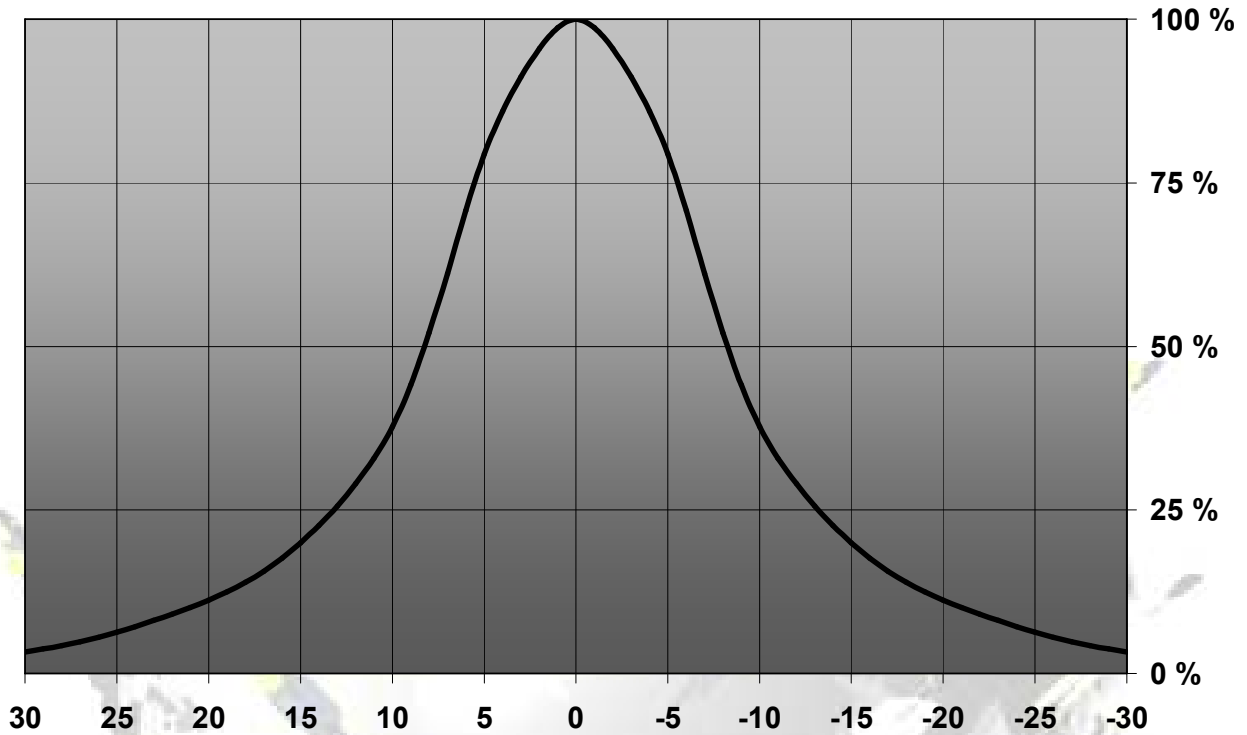
### LENS TYPES

NAME	ORDERING CODE	FWHM Angle
Lisa2-Clip16 Real Spot	FA11087_Lisa2-RS-clip16-N19	±8°
Lisa2-Clip16 Medium	FA11078_Lisa2-M-clip16-N19	±13°
Lisa2-Clip16 Oval	FA11123_Lisa2-O-clip16-N19	±10° x ±24°
Lisa2-Clip16 Oval 90°	FA11860_Lisa2-O-90-clip16-N19	±10° x ±24°
Lisa2-Clip16 Wide	FA11079_Lisa2-W-clip16-N19	±21°
Lisa2-Clip16 WW	FA11080_Lisa2-WW-clip16-N19	to be measured shortly
Lisa2-Clip16 WWW	FA11955_Lisa2-WWW-Clip16-N19	to be measured shortly

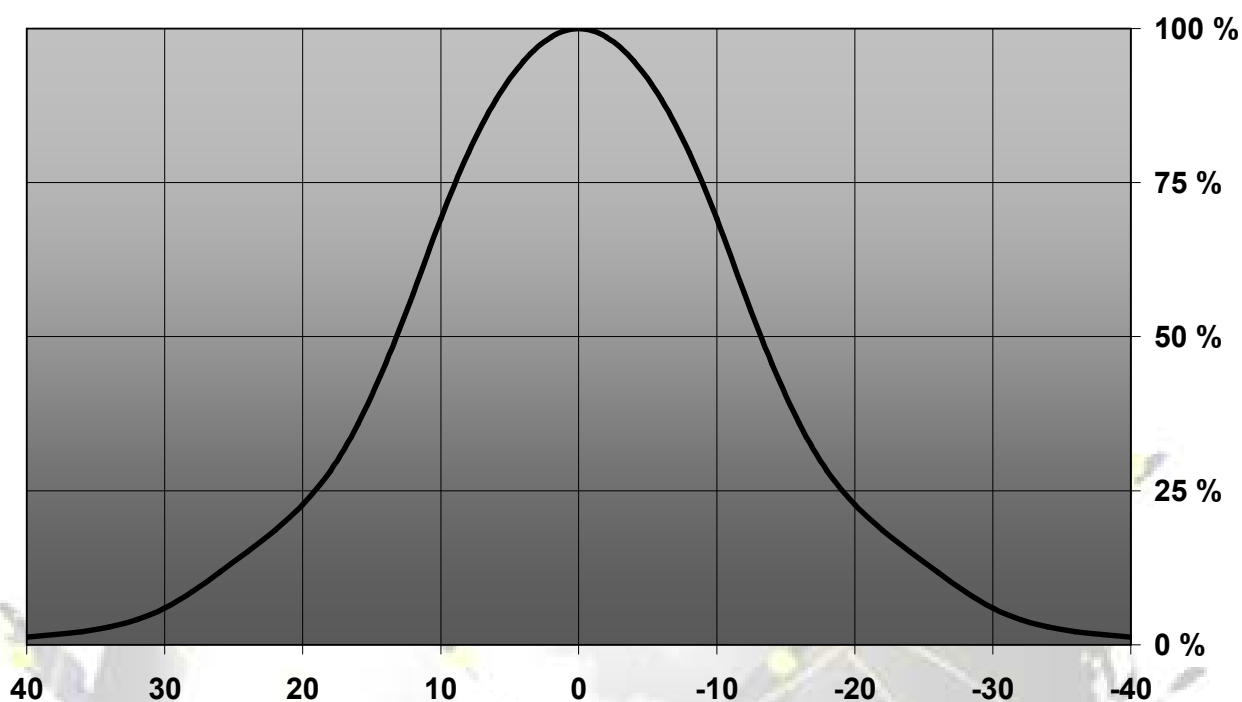
© Ledil Oy - PRELIMINARY - Subject to change without prior notice

**MEASUREMENT DATA**

Relative Intensity of F11046\_Lisa2-RS-N119

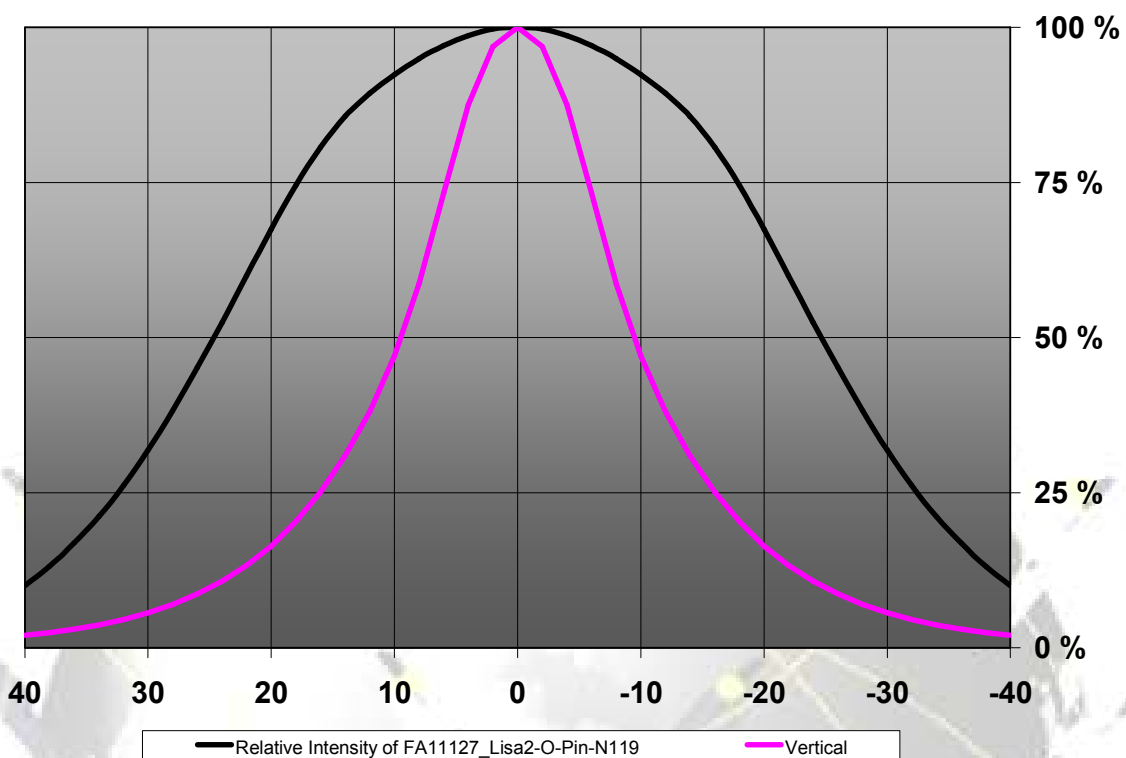


© Ledil Oy - PRELIMINARY - Subject to change without prior notice

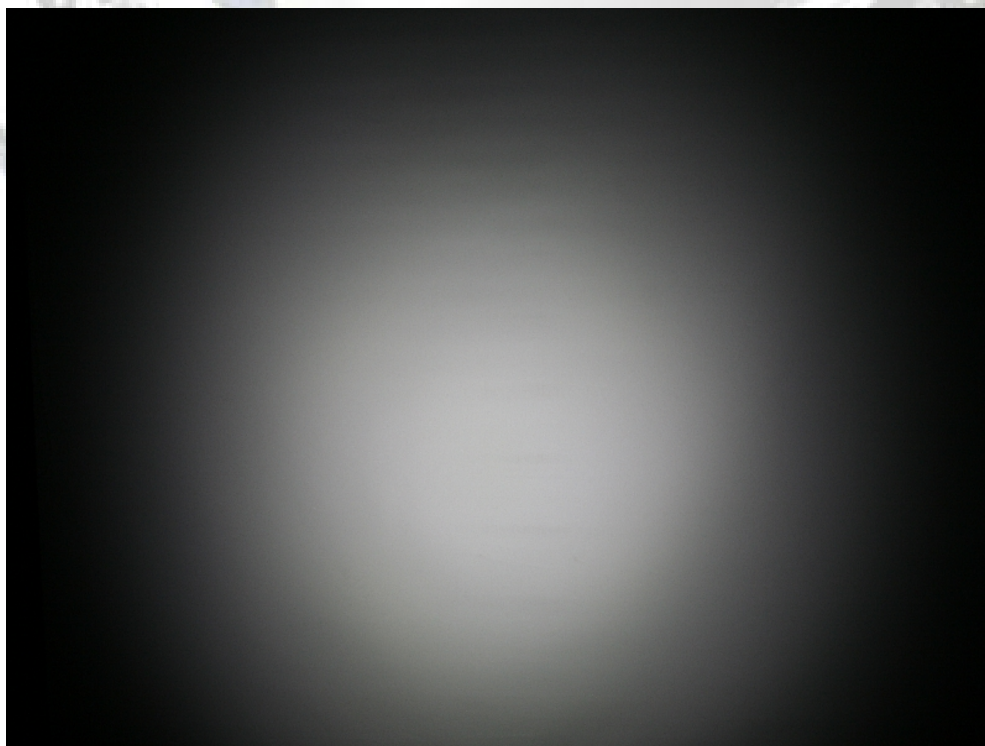
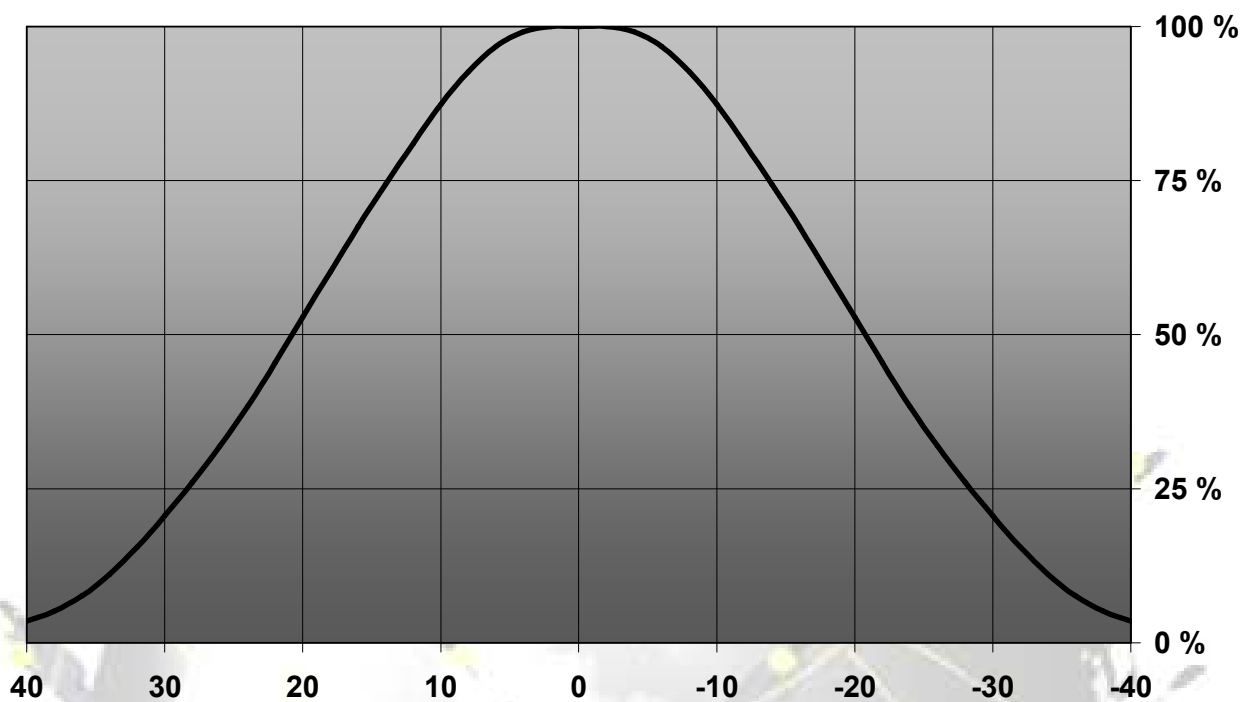
**Relative intensity of FA10998\_Lisa2-M-Pin-N119**

© Ledil Oy - PRELIMINARY - Subject to change without prior notice

Relative intensity of FA11127\_Lisa2-O-Pin-N119

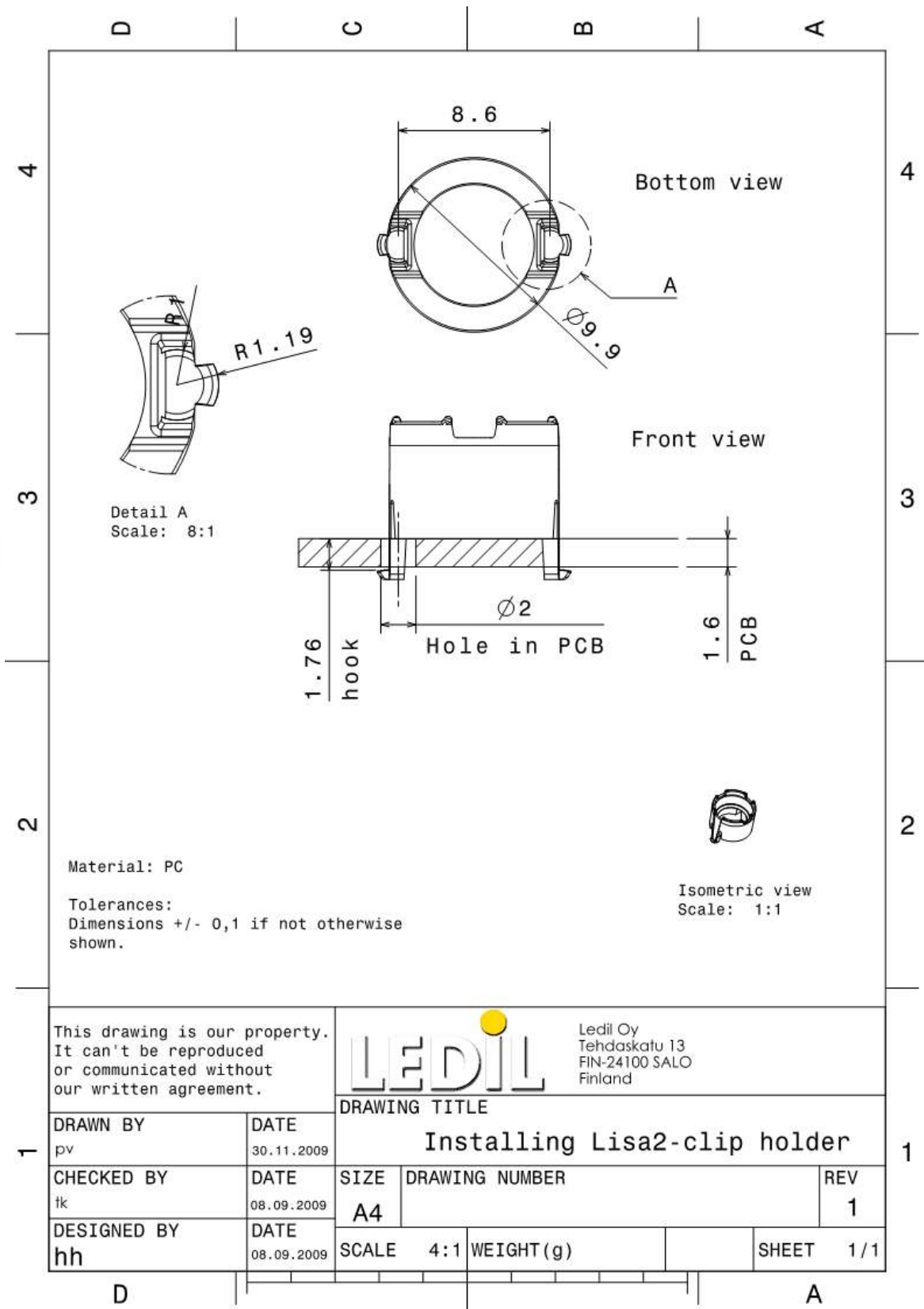


© Ledil Oy - PRELIMINARY - Subject to change without prior notice

**Relative intensity of FA10999\_Lisa2-W-Pin-N119**

© Ledil Oy - PRELIMINARY - Subject to change without prior notice

## DRAWINGS



© Ledil Oy - PRELIMINARY - Subject to change without prior notice