

REGINA REFLECTOR FOR NICHIA 119 / 219 LEDs



- Reflector is made of aluminum coated PC (120°C/248F) with protective laquer(110°C/230F)
- Best available optical efficiency, over 90%
- Small position pins, fastening to heat sink with droplets of glue.
- Compact dimensions 19mm x 15.3 mm (+ position pins 2.5mm)
- Please check fastening details from this link:
(http://www.ledil.com/datasheets/DataSheet_GLUES.pdf)

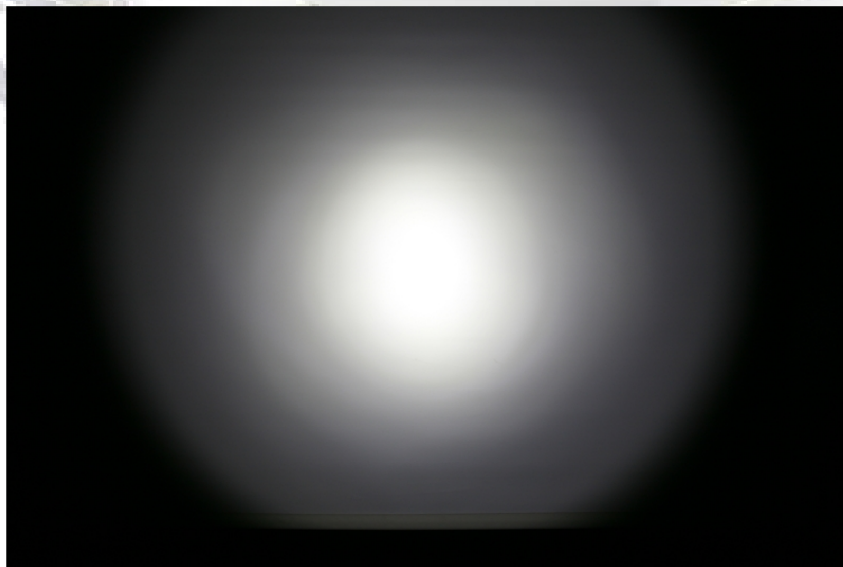
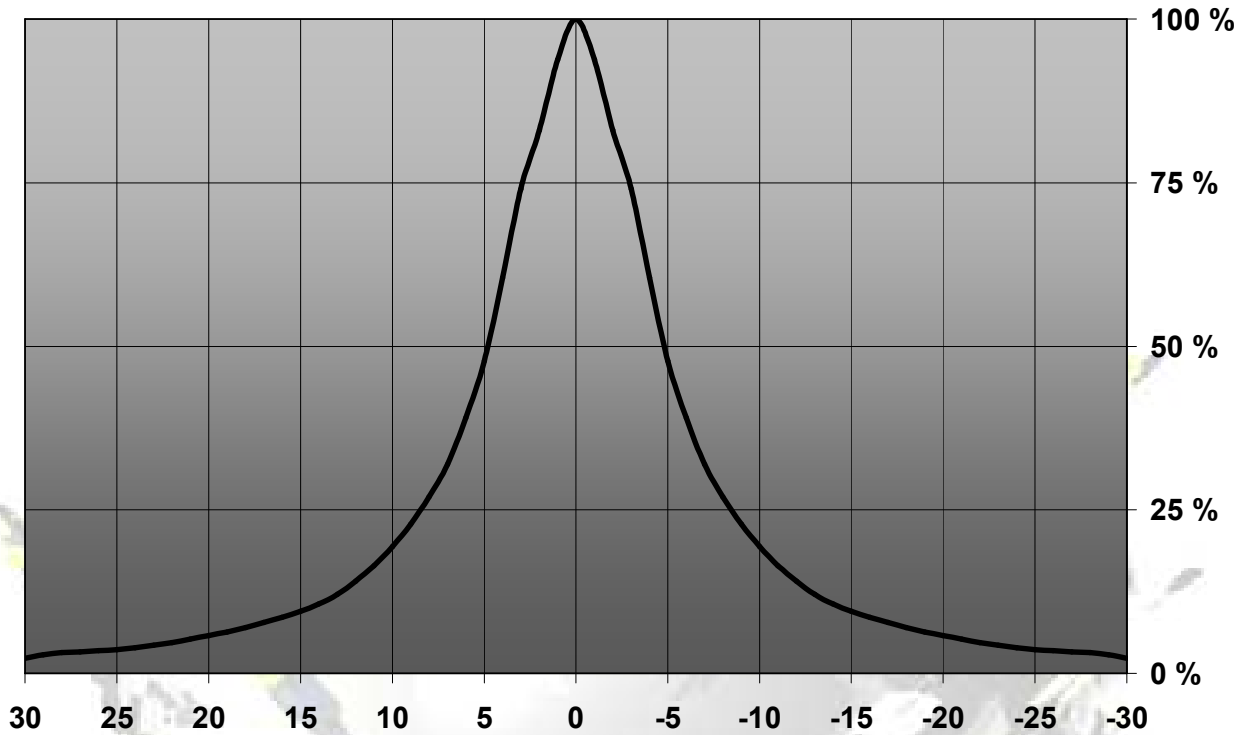
REFLECTOR TYPES

NAME	ORDERING CODE	FWHM Angle
REGINA reflector	C11347_Regina-N19	±5°

© Ledil Oy – PRELIMINARY - Subject to change without prior notice

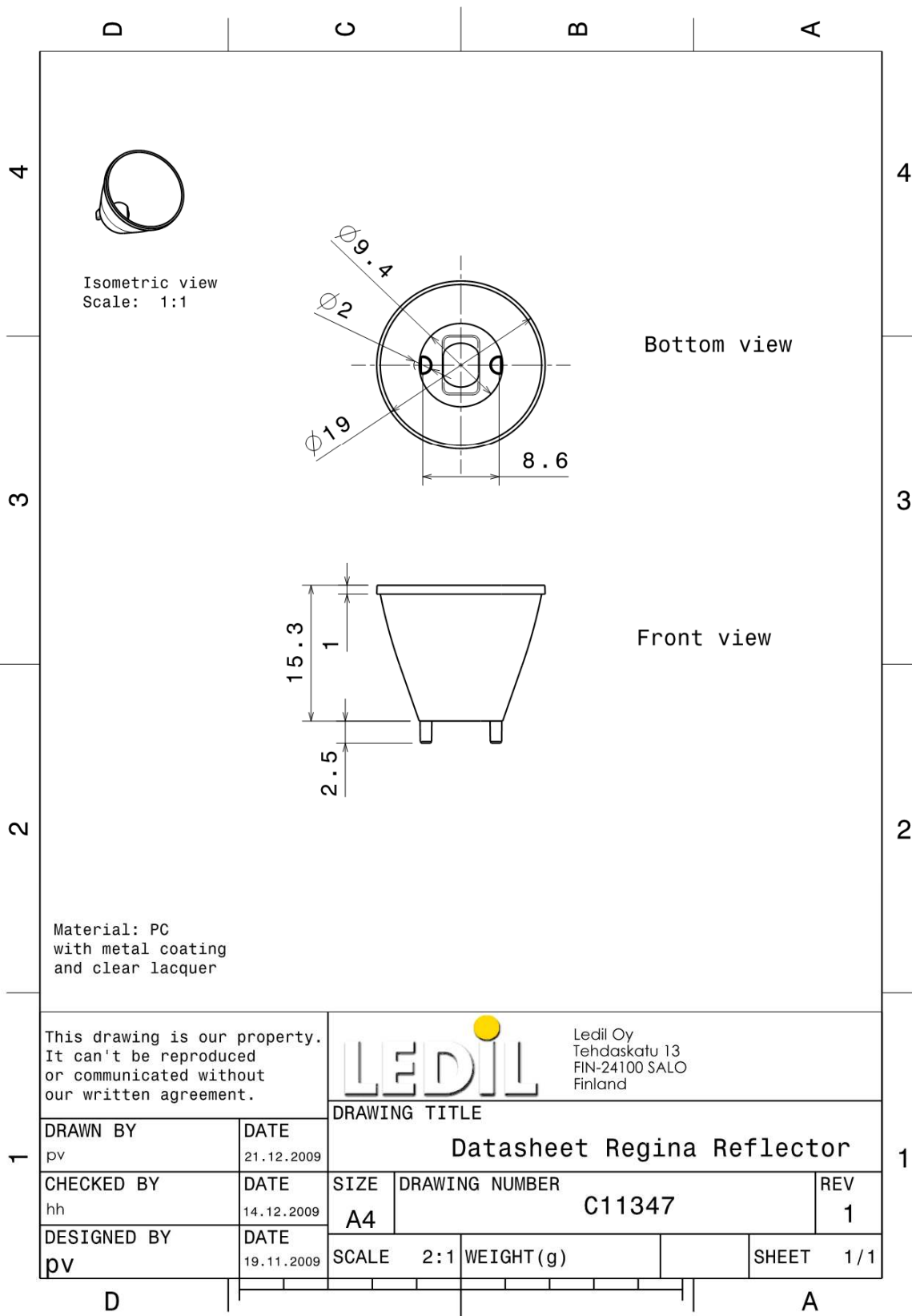
MEASUREMENTS

Relative Intensity of C11347_Regina-N119



© Ledil Oy – PRELIMINARY - Subject to change without prior notice

DRAWINGS



© Ledil Oy - PRELIMINARY - Subject to change without prior notice