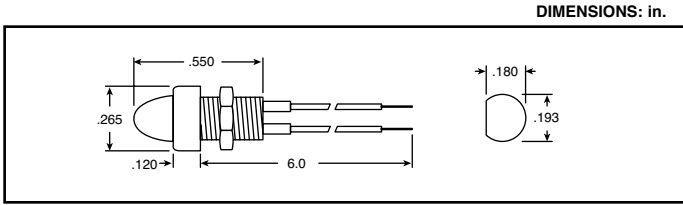


CHICAGO MINIATURE INDICATORS and Lamp Holders

Chicago Miniature Lighting, LLC
Lighting the world since 1910

Products may be RoHS compliant.
Check mouser.com for RoHS status.

ASTROLITE LED INDICATORS

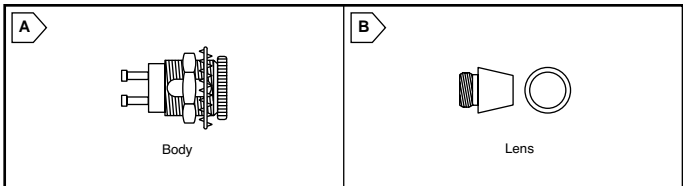


- Specifications:**
- Mounting hole: .133"
 - Mounting centers: .334" min.
 - Panel thickness: .188"
 - Bezel/Shank: chrome plated brass
 - Hex nut: nickel plated brass
 - Wire leads: 26AWG stranded, 105°C PVC insulation

For quantities of 500 or more, call for quote.

MOUSER STOCK NO.	Color		Forward Voltage @ I _F = 20mA		Luminous Intensity @ 10mA(mcd)		Peak Wave-Length (nm)	Price Each		
	LED	Lens	Typ.	Max.	Min.	Typ.		1	10	100
606-6039-004-304R	Hi-eff red	Red diff	1.6	2.0	.4	1.5	630			
606-6039-004-304Y	Yellow	Yel diff	2.1	3.0	1.5	8.0	585			

GEMLITE SUBMIDGET INDICATORS

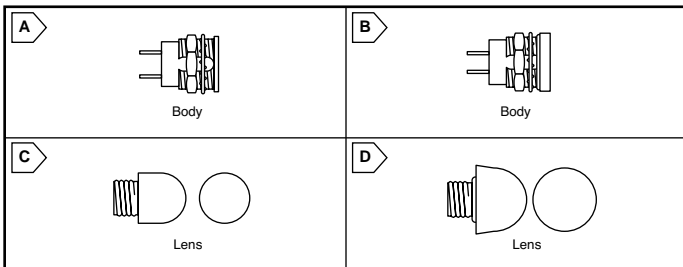


- Specifications:**
- Mounting hole: .313"
 - Mounting centers: .469" min.
 - Panel thickness: .218" max.
 - Lock washer: nickel plated bronze
 - Hex nut: nickel plated brass
 - Lens: high temperature lexan
 - Lens shank: nickel plated brass
 - Housing material: black nickel plated brass
 - Electrical rating: up to 30V, up to 1W

For quantities of 500 or more, call for quote.

MOUSER STOCK NO.	Fig.	Description	Price Each		
			1	10	100
606-5160-458	A	T-1 sub-midget flange base indicator, body			
606-160A-604R	B	Translucent red lens for 5160-48, lens			
606-160A-604G	B	Translucent green lens for 5160-48, lens			
606-160A-604Y	B	Translucent yellow lens for 5160-48, lens			
606-160A-604W	B	Translucent white lens for 5160-48, lens			

MIDGET FLANGE RELAMPABLE INDICATORS

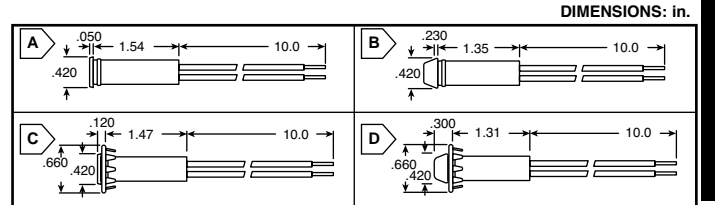


- Specifications:**
- Mounting hole: .484"
 - Mounting centers: .750" min.
 - Panel thickness: standard=.265" watertight=.188"
 - Terminals: tin plated brass
 - Housing material: black anodized aluminum
 - Hex nut/lock washer: chrome treated steel
 - O-rings (5139 only): neoprene
 - Electrical rating: up to 30V, up to 2W
 - Lens: high temperature lexan

For quantities of 500 or more, call for quote.

MOUSER STOCK NO.	Fig.	Description	Price Each		
			1	10	100
606-5131-038	A	T-1 3/4 midget flange standard indicator			
606-5139-038	B	T-1 3/4 midget flange watertight indicator			
606-131A-303R	C	Transparent red lens for 5131-038			
606-131A-303A	C	Transparent amber lens for 5131-038			
606-131A-303G	C	Transparent green lens for 5131-038			
606-131A-304R	C	Translucent red lens for 5131-038			
606-131A-304G	C	Translucent green lens for 5131-038			
606-131A-304Y	C	Translucent yellow lens for 5131-038			
606-139A-404G	D	Translucent green lens for 5139-038			
606-139A-404R	D	Translucent red lens for 5139-038			
606-139A-404Y	D	Translucent yellow lens for 5139-038			

GLO-LITE NEON INDICATORS



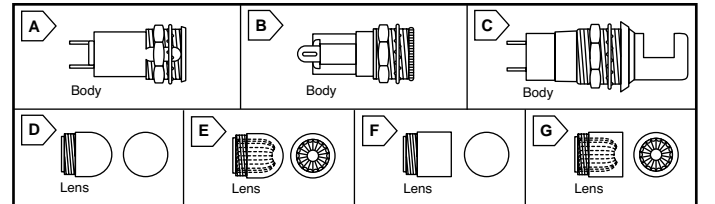
- Specifications:**
- Mounting hole: 6063 Series - .375" / 6073 Series - .500"
 - Mounting centers: 6063 Series - .500" / 6073 Series - .688"
 - Panel thickness: 6063 Series - 1.25" / 6073 Series - .078"
 - Bezel (6073 only): chrome plated brass
 - Wire leads: 22AWG stranded black 105°C PVC
 - Electrical: 125VAC, built-in 30KΩ 1/4W resistor
 - UL Recognized, CSA Certified

For quantities of 500 or more, call for quote.

MOUSER STOCK NO.	Fig.	Color	Description	Price Each		
				1	10	100
606-6063-001-534R	A	Red	Flat face with no bezel			
606-6063-001-634R	B	Red	Conical face with no bezel			
606-6073-001-534R	C	Red	Flat face with chrome bezel			
606-6073-001-634R	D	Red	Conical face with chrome bezel			
606-6073-001-634W	D	White	Conical face with chrome bezel			

T-2 AND T-3 1/4 MINIATURE RELAMPABLE INDICATORS

(For use with Bayonet Incandescent and Neon Lamps)



- Specifications:**
- Mounting hole: .688"
 - Mounting centers: .969" min.
 - Panel thickness: .406" max.
 - Lock washer: chromate treated steel
 - Housing material: 5100 Series - glass filled polyester, 5200 Series - phenolic, 900-200 Series - black anodized aluminum
 - Hex nut: zinc plated steel
 - Lens (5100 and 5200 Series): high temperature lexan

Body For quantities of 500 or more, call for quote.

MOUSER STOCK NO.	Fig.	Description	Price Each		
			1	10	100
606-5100-822	A	Solder lug terminals, no resistor			
606-5100-823	A	Screw type terminals, no resistor			
606-5100-824	A	.250" quick connect terminals, no resistor			
606-5200-222	B	Solder lug terminals, no resistor			
606-5200-232	B	Solder lug terminals, 22KΩ resistor			
606-5200-242	B	Solder lug terminals, 100KΩ resistor			
606-900-200	C	Instrument lite, solder lug terminals			

Lenses (for 606-5100 and 606-5200 series, shown above) For quantities of 500 or more, call for quote.

606-25P-306R	D	Transparent red dome			
606-25P-306A	D	Transparent amber dome			
606-25P-306G	D	Transparent green dome			
606-25P-306C	D	Transparent clear dome			
606-25P-307R	D	Translucent red dome			
606-25P-307G	D	Translucent green dome			
606-25P-307Y	D	Translucent yellow dome			
606-25P-307W	D	Translucent white dome			
606-25P-326R	E	Transparent red fluted dome			
606-25P-326A	E	Transparent amber fluted dome			
606-25P-326G	E	Transparent green fluted dome			
606-25P-326C	E	Transparent clear fluted dome			
606-25P-606A	F	Transparent amber cylindrical			
606-25P-606R	F	Transparent red cylindrical			
606-25P-606G	F	Transparent green cylindrical			
606-25P-606C	F	Transparent clear cylindrical			
606-25P-607R	F	Translucent red cylindrical			
606-25P-607G	F	Translucent green cylindrical			
606-25P-607Y	F	Translucent yellow cylindrical			
606-25P-607W	F	Translucent white cylindrical			
606-25P-626R	G	Transparent red fluted cylindrical			
606-25P-626A	G	Transparent amber fluted cylindrical			
606-25P-626G	G	Transparent green fluted cylindrical			
606-25P-626C	G	Transparent clear fluted cylindrical			

RELAMPABLE INDICATOR HOLDERS

MOUSER STOCK NO.	Description	Price Each		
		1	10	100
606-CM21-2	T-1 3/4 bi-pin base lamp socket			

For quantities of 500 or more, call for quote.