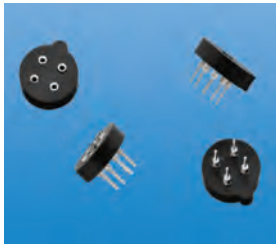


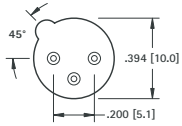
SOCKETS FOR TO-5 & TO-100



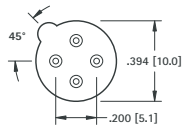
Fully molded compact construction. Speeds transistor assembly. Incorporates ultra high quality, closed entry, sleeve type contacts. Accepts .016 (.41) to .020 (.51) diameter leads or .010 (.25) x .018 (.46) rectangular transistor leads.

MATERIAL:
Insulator: Glass Filled Polyester, UL Rated 94V-0
Contact Pin: Brass, Tin Plate
Contact Spring: Beryllium Copper, .000030 min. Gold Plate

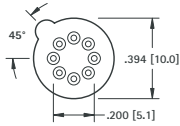
CAT. NO.	FOR	PINS
4590	TO-5	3
4591	TO-5	4
4592	TO-5	8
4593	TO-100	8
4594	TO-100	10



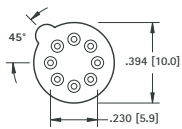
Cat. No. 4590



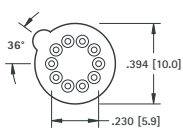
Cat. No. 4591



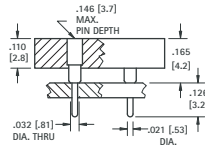
Cat. No. 4592



Cat. No. 4593



Cat. No. 4594

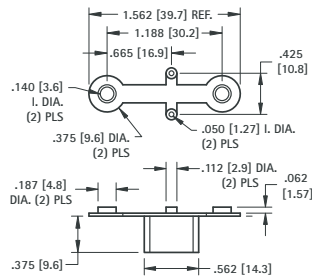


POWER TRANSISTOR MOUNTS

Molded barrier insulators functionally replaces up to six pieces of conventional insulation required with previous methods of mounting power transistors. Built-in barrier eliminates need for sleeving of connections.

NOTE: #6-20 mounting screw available **CAT. NO. 4706**

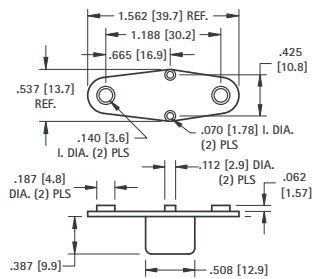
For TO-3 CASES



MATERIAL: Nylon 6/6, UL Rated 94V-2

CAT. NO. 4616

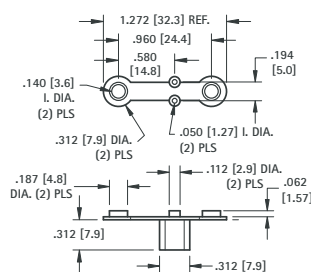
HEAVY DUTY TO-3



MATERIAL: Glass filled Polyester, UL Rated 94V-0

CAT. NO. 4626

For TO-66 CASES



MATERIAL: Nylon 6/6, UL Rated 94V-2

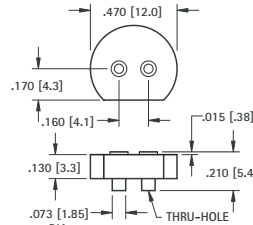
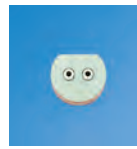
CAT. NO. 4617

"MINI" HALOGEN LAMP SOCKETS

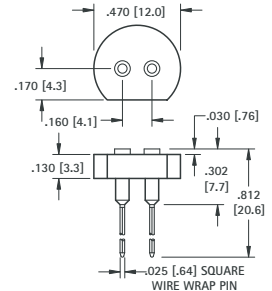
- Accepts .022 (.032) to .032 (.81) diameter Pins or Leads
- The Wire Wrap Pins can be easily bent to achieve a variety of positions

SPECIFICATIONS

Base: Glass Filled LCP; **Contact:** Beryllium Copper, Gold Plate; **Shell:** Brass, Nickel Plate



CAT. NO. 4595

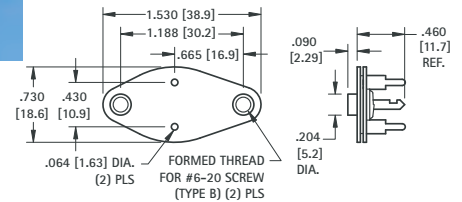


CAT. NO. 4596

TO-3 SOCKET FOR PC BOARDS



Easily assembles onto printed circuit board. Eliminates wiring. Stops on PC terminals provide sufficient spacing between socket and PC board to permit proper assembly of transistor to socket. Can be screwed down tightly to heat sink.

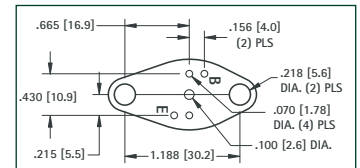


Bottom View Mounting Detail

MATERIAL:

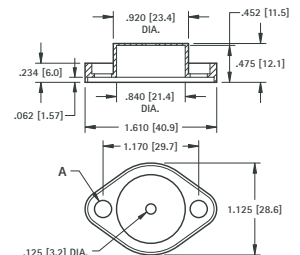
Top Plate: Molded Nylon
Base: Phenolic
Contacts: Brass, Tin Plate
Collector Plate: Steel, Tin Plate

CAT. NO. 4600



NYLON TO-3 CASE COVERS

Molded nylon covers easily mount over and insulate the power transistor. Will withstand temperatures to approximately 250°F (107°C).



MATERIAL: Nylon 6/6, UL Rated 94V-2

CAT. NO.	FOR	EYELETS INSTALLED	A
4632	TO-3	NONE	.210 (5.4)
4634	TO-3	TWO	.140 (3.6)