

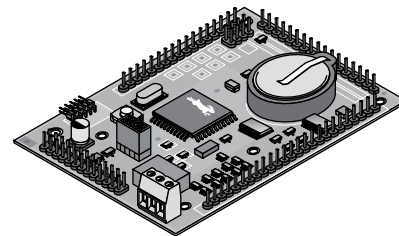
# RABBIT Single Board Computers



## LP3500 FOX

The LP3500 Fox is a low-power single-board computer designed to operate reliably virtually any place it is deployed, especially where power is limited, such as in portable, hand-held, battery-powered, and remote monitoring systems. The LP3500 features built-in analog and digital I/O and consumes less than 20mA when fully operational and less than 100µA in power-save mode.

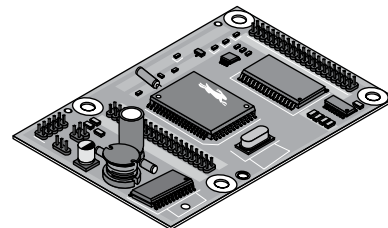
MOUSER STOCK NO.	Rabbit Part No.	Description	Price Each
<a href="#">812-20-101-0525</a>	20-101-0525	512K/512K Analog inputs, Relay - RoHS	
<a href="#">812-20-101-0526</a>	20-101-0526	256K/128K	
<b>Programming/Development Tools</b>			
<a href="#">694-20-101-0580</a>	20-101-0580	RabbitLink Card	
<a href="#">694-20-151-0178</a>	20-151-0178	RS-232-to-USB Converter Cable	
<b>Expansion Boards</b>			
<a href="#">694-20-101-0467</a>	20-101-0467	8 Meg Serial Flash - RoHS	
<b>Mounting/Display</b>			
<a href="#">812-20-101-0466</a>	101-0466	Keypad/Display Unit	
<a href="#">694-20-101-0541</a>	20-101-0541	Panel-Mnt Keypad/Display Unit, 3.3 Volt - RoHS	
<a href="#">694-20-101-0502</a>	20-101-0502	Panel-Mount Keypad/Display Unit, 5 Volt - RoHS	
<a href="#">812-540-0069</a>	540-0069	Keypad/Display Unit Cable 5"	
<a href="#">812-20-101-0431</a>	101-0431	Unibox Enclosure	
<a href="#">812-20-101-0495</a>	20-101-0495	Baseplate	



## BL1800 JACKRABBIT

The Jackrabbit is RABBIT's most compact and lowest cost C-programmable single-board computer. The Jackrabbit is the perfect solution for applications that have significant cost and size constraints but need a dependable SBC. Fast number crunching is provided by a Rabbit 2000 microprocessor operating at up to 29.5MHz.

MOUSER STOCK NO.	Rabbit Part No.	Description	Price Each
<a href="#">812-20-101-0356</a>	20-101-0356	BL1800	
<a href="#">812-20-101-0357</a>	20-101-0357	BL1810	
<a href="#">812-101-0814</a>	101-0814	BL1810 512K SRAM	
<a href="#">812-20-101-0358</a>	20-101-0358	BL1820	
<b>Programming/Development Tools</b>			
<a href="#">694-20-101-0580</a>	20-101-0580	RabbitLink Card	
<a href="#">694-20-101-0513</a>	20-101-0513	2mm Programming Cable	
<a href="#">694-20-151-0178</a>	20-151-0178	RS-232-to-USB Converter Cable	
<a href="#">694-151-0113</a>	151-0113	Connector Adapter Board	
<b>Expansion Boards</b>			
<a href="#">694-20-101-0467</a>	20-101-0467	8 Meg Serial Flash	



## BL4S100 & BL4S200 SINGLE BOARD COMPUTERS

The BL4S100 is a low-cost Rabbit® 4000 microprocessor based single-board computer series that delivers ZigBee and Ethernet capability. On-board ZigBee RF modules offer mesh networking functionality to make networking easy to deploy and simple to maintain. With both Ethernet and ZigBee connectivity integrated onto the BL4S100, the series delivers a low-cost platform to design a ZigBee enabled Ethernet network.

Rabbit's BL4S200 series of single-board computers deliver the features and wireless connectivity to support networking for industrial control applications. In addition to the Ethernet and Fast Ethernet versions, the BL4S200 offers a choice of Wi-Fi and ZigBee enabled wireless networking options. The BL4S200 provides reliable hardware that has been certified by the FCC and other international agencies.



MOUSER STOCK NO.	Rabbit Part No.	Description	Price Each
<b>BL4S100 Single-Board Computer - ZigBee Enabled Ethernet Gateway</b>			
<a href="#">694-20-101-1255</a>	20-101-1255	BL4S100 512K with XBee	
<a href="#">694-20-101-1256</a>	20-101-1256	BL4S110 512K	
<a href="#">694-20-101-1257</a>	20-101-1257	BL4S150 1M with XBee	
<a href="#">694-20-101-1258</a>	20-101-1258	BL4S160 1M	
<b>BL4S200 Single-Board Computer - Wireless or Wired Connectivity for Industrial Control</b>			
<a href="#">694-20-101-1220</a>	20-101-1220	BL4S200 (RCM4310-based)	
<a href="#">694-20-101-1259</a>	20-101-1259	BL4S210 (RCM4010-based)	
<a href="#">694-20-101-1260</a>	20-101-1260	BL5S220 (RCM5400-based)	
<a href="#">694-20-101-1261</a>	20-101-1261	BL4S230 (RCM4510W-based)	
<b>Development Tools</b>			
<a href="#">694-101-1268</a>	101-1268	BL4S100 Tool Kit	
<a href="#">694-101-1270</a>	101-1270	BL4S200 Tool Kit	
<b>Optional Add-Ons</b>			
<a href="#">694-101-1279</a>	101-1279	BL4S100 Plastic Enclosure	
<a href="#">694-101-1272</a>	101-1272	Mesh Network Add-On Kit	