

# Leopard Network Camera Module



LEOPARD IMAGING INC.

Model: LNC-M10xxx-MN34041

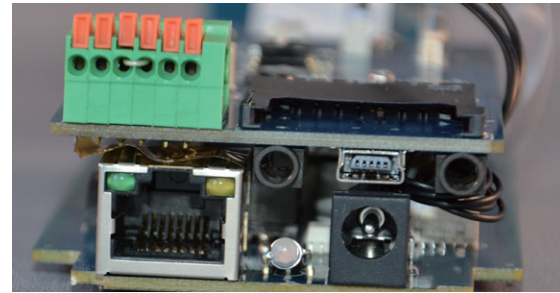
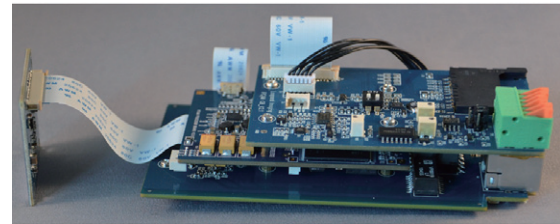
High Definition Embedded Camera Leader

LNC-M10xxx-MN34041 camera module is a full HD network camera solution, it is ready for production and it supports H.264, MPEG4 and MJPEG video format outputs with high definition video (1920 x 1080p 30 frames/s).



The image process module supports noise filters (NS), wide dynamic range (WDR), auto-enhancement and lens distortion correct (LDC). All of the features provide high quality images even in dark and shake environments.

Embedded motions detect, face detects, face recognition and privacy area mask provide an advanced surveillance system.

LNC-M10xxx-MN34041 camera module is compatible with PSIA and can easily be integrated with other systems.

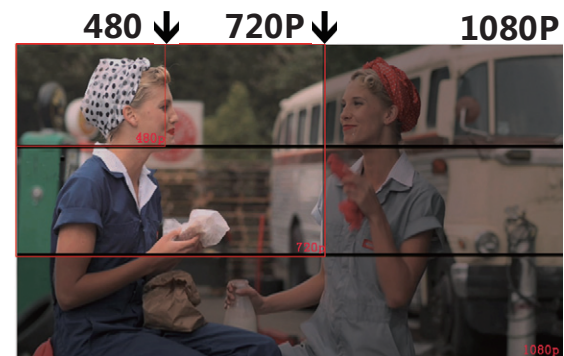


## Features

- 30 frames per second @1080P 
- single/double/triple media combo output
- video stabilization
- face detect, face recognition
- motion detect, motion alarm
- image enhance, digital WDR
- compatible with PSIA standard 
- optional PoE support
- optional Wi-Fi module
- optional Day/Night IR cutting auto-switch
- product level module, ready for production

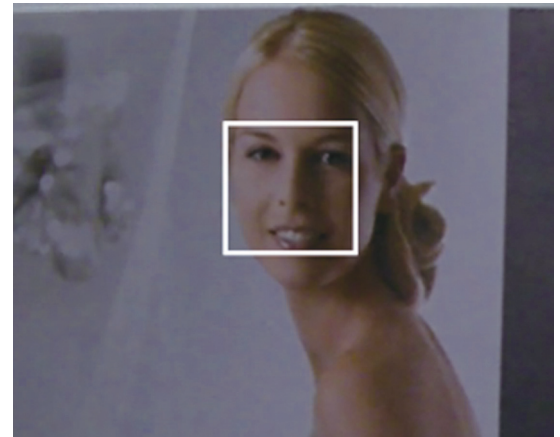
## HD, more view area

View area in 1080p is Full HD and double 720P.



## Face Recognition

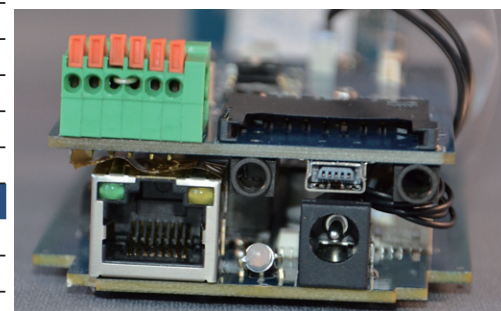
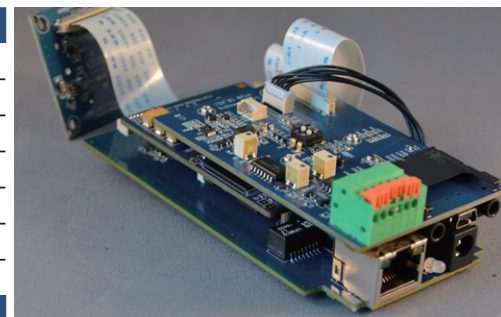
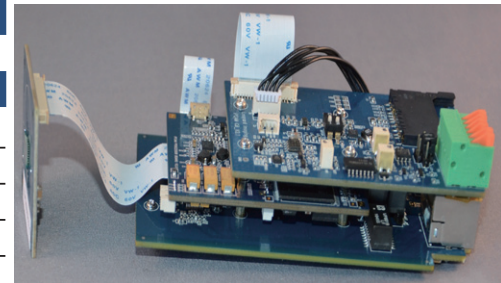
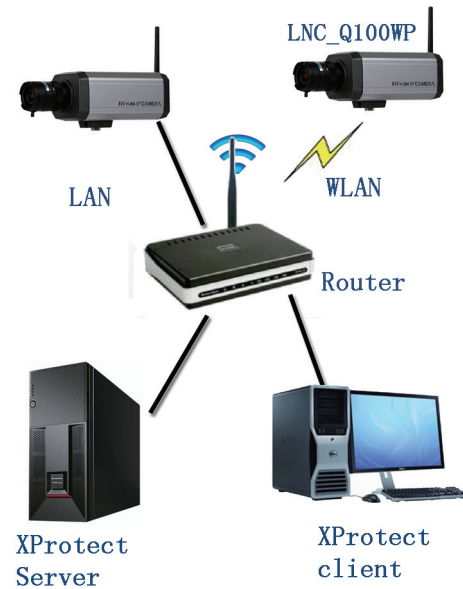
The Leopard Network Camera can accommodate 30 frames per second to provide prompt results for locating and recognizing the human face.



# Feature List

Image Input	
Sensor	Panasonic 1/3" CMOS
Day/Night	Auto switch (Optional Feature)
WDR	Digital WDR
Active pixels	1944 (H) x 1092 (V)
e-shoot	1/2 to 1/10,000
Enhance	Auto Enhance
Exposure	Auto Exposure
White Ballance	Auto WB
Noise Filter	Configurable Enable/Disable
Video Stabilization	Configurable Enable/Disable
Lens	Fix focus, IRIS support, C/CS mount lens support
Image Process	
Resolution	1920x1080,1280x720,D1,SXVGA
Format	H.264, MPEG-4, JPEG
Frame Rate	H264/MPEG-4: 30f/s
Smart Imaging	
Motion Detect	Yes
Face Detect	Yes
Face Recognition	Yes
Audio	
Format	G.711
Network	
Protocols	TCP/IP, HTTP, FTP (client/server), SMTP, DHCP, DNS, NTP, RTP/RTCP
Wireless	Yes (Optional Feature)
IP Protocol	PSIA
Authentication	IEEE802.1X
UPnP	Yes
Zero-config	Yes
Interfaces	
Network	10BASE-T/100BASE-TX (RJ-45)
Serial Port	RS-485 (PELCO-D protocol)
Extention Storage	SD card x1
USB	MiniB USB
Alarm In/Out	One channel Input,one channel Output
Audio Input	3.5MM Input
Audio Output	3.5MM Output
Work Environment	
Weight	348 gram
Size	113.3mm*57.6mm*32.2mm
Power Supply	PoE(Optional) or DC12V
Power Consuming	<3w
Temperature	-20°C ~ 45°C
Humidity	10% ~ 80% no condense
Survellian Software	
OS	Microsoft Windows 98/2000/XP/Vista/Win7
Browser	Internet Explorer6.0 or above
Record Software	Milestone xprotect (3rd software)

## System Architecture



## Leopard Imaging Inc.

1130 Cadillac Ct  
 Milpitas, CA 95035, USA  
 Phone: +1-408-263-0988  
 Fax: +1-408-217-1960  
 Email: sales@leopardimaging.com  
 Website: www.leopardimaging.com

## 上海嘉骏信息科技有限公司

上海市闵行区沪闵路 7250 号友谊商城 802 室  
 电话: +86-21-54887300  
 传真: +86-21-54887300-804  
 邮箱: sales@jjajuntech.com  
 网站: www.jjajuntech.com