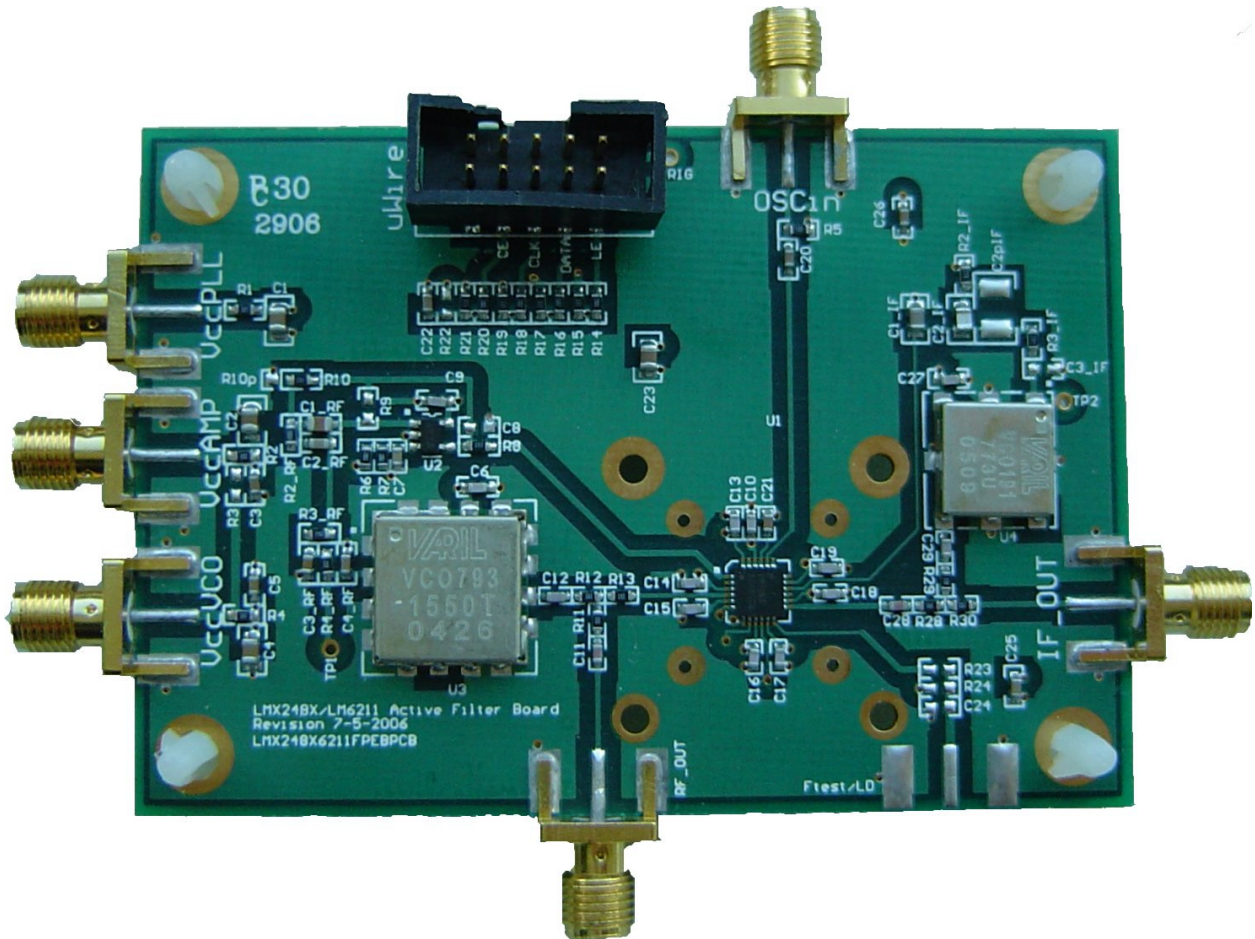


LMX2485 with Active Filter Using LM6211

Evaluation Board Operating Instructions



National Semiconductor Corporation
Wireless Communications, RF Products Group

2900 Semiconductor Dr.
M/S A2-600
Santa Clara, CA, 95052-8090
LMX2485LM6211SLEFPEBI Rev 11.02.2006



LMX2485 Evaluation Board with LM6211 Active Filter

Operating Instructions

General Description

The LMX2485 Evaluation Board simplifies evaluation of the LMX2485 2.6 GHz/0.8 GHz **PLLatinum™ dual frequency synthesizer**. The board enables all performance measurements with no additional support circuitry. The evaluation board consists of a LMX2485 device, a RF VCO module and IF VCO & RF/IF loop filters built by discrete components. The SMA flange mount connectors are provided for external reference input, RF and IF VCO outputs, and the power and grounding connection. A cable assembly is bundled with the evaluation board for connecting to a PC through the parallel printer port. By means of **MICROWIRE™** serial port emulation, the **CodeLoader** software included can be run on a PC to facilitate the LMX2485 internal register programming for the evaluation and measurement.

RF LOOP FILTER			
Phase Margin	46.6 deg	Pole Ratio T3 /T1	318.2 %
Loop Bandwidth	28.4 KHz	Pole Ratio T4/T3	34.9 %
Theoretical Lock Time	168 uS	Roll-Off @ 200 kHz	-27.9 dB
		Settings for Operation	
		$K\phi$	8X (760 uA)
		Comparison Frequency	10 MHz
		Output Frequency	950 - 2150 MHz
		OP Amp Supply	24 Volts
		PLL Supply	3.3 Volts
		VCO Supply	12 Volts
		Other Information	
		VCO Used	Sirenza VCO793-1550T
		VCO Gain	67 MHz/Volt@1.0 GHz 75MHz/Volt@1.5 GHz 60 MHz/Volt@2.0 GHz
VCO Input Capacitance	22 pF		
IF LOOP FILTER			
Phase Margin	46.4 deg	Lock Time	760 - 780 MHz MHz to 1 KHz tolerance in 508 uS
Loop Bandwidth	4.7 KHz	Spur Gain @ 50 KHz	50.5 dB
		Settings for Operation	
		$K\phi$	3.5 mA
		Comparison Frequency	50 kHz
		Output Frequency	760 - 780 MHz
		PLL Supply	3.3 Volts
		Other Information	
		VCO Used	VARIL191-773U
		VCO Gain	18 MHz/Volt
		VCO Input Capacitance	100 pF



Phase Noise

Agilent 14:48:09 Oct 18, 2006 R L

Carrier Freq 1 GHz Signal Track Off DANL Off Trig Free

Log Plot 100.00% of 20 Avg

Carrier Power 0.74 dBm Atten 2.00 dB Mkr 2 999.000 Hz
Ref -50.00dBc/Hz -91.75 dBc/Hz

Marker	Trace	Type	X Axis	Value
1		Spot Freq	100 Hz	-94.78 dBc/Hz
2		Spot Freq	999 Hz	-91.75 dBc/Hz
3		Spot Freq	10 kHz	-93.28 dBc/Hz
4		Spot Freq	100 kHz	-103.89 dBc/Hz

Copyright 2000-2006 Agilent Technologies

Phase Noise for a 1 GHz output Frequency

Agilent 14:52:43 Oct 18, 2006 R L

Carrier Freq 1.5 GHz Signal Track Off DANL Off Trig Free

Log Plot 100.00% of 20 Avg

Carrier Power -0.47 dBm Atten 0.00 dB Mkr 2 999.000 Hz
Ref -50.00dBc/Hz -87.71 dBc/Hz

Marker	Trace	Type	X Axis	Value
1		Spot Freq	100 Hz	-91.26 dBc/Hz
2		Spot Freq	999 Hz	-87.71 dBc/Hz
3		Spot Freq	10 kHz	-92.13 dBc/Hz
4		Spot Freq	100 kHz	-107.28 dBc/Hz

Copyright 2000-2006 Agilent Technologies

Phase Noise for a 1.5 GHz output Frequency

Agilent 14:59:47 Oct 18, 2006 R T

Carrier Freq 2 GHz Signal Track Off DANL Off Trig Free

Log Plot 100.00% of 20 Avg

Carrier Power -2.77 dBm Atten 0.00 dB Mkr 2 999.000 Hz
Ref -50.00dBc/Hz -85.05 dBc/Hz

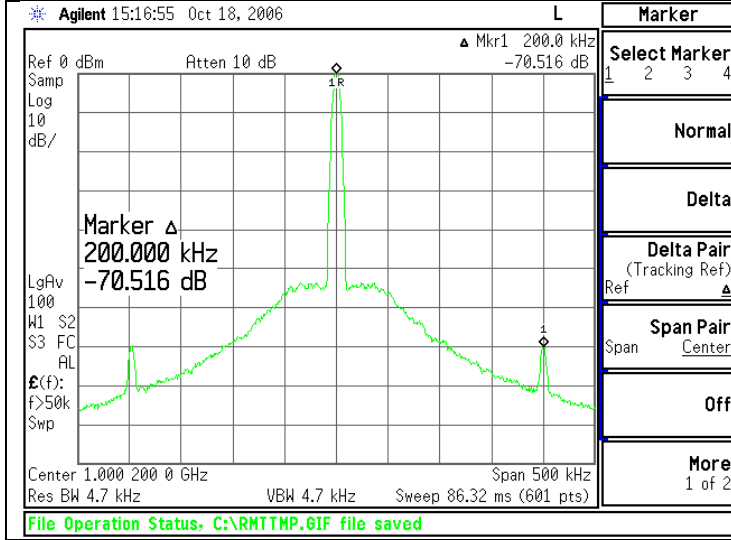
Marker	Trace	Type	X Axis	Value
1		Spot Freq	100 Hz	-78.76 dBc/Hz
2		Spot Freq	999 Hz	-85.05 dBc/Hz
3		Spot Freq	10 kHz	-90.28 dBc/Hz
4		Spot Freq	100 kHz	-109.64 dBc/Hz

Copyright 2000-2006 Agilent Technologies

Phase Noise for a 2 GHz output Frequency

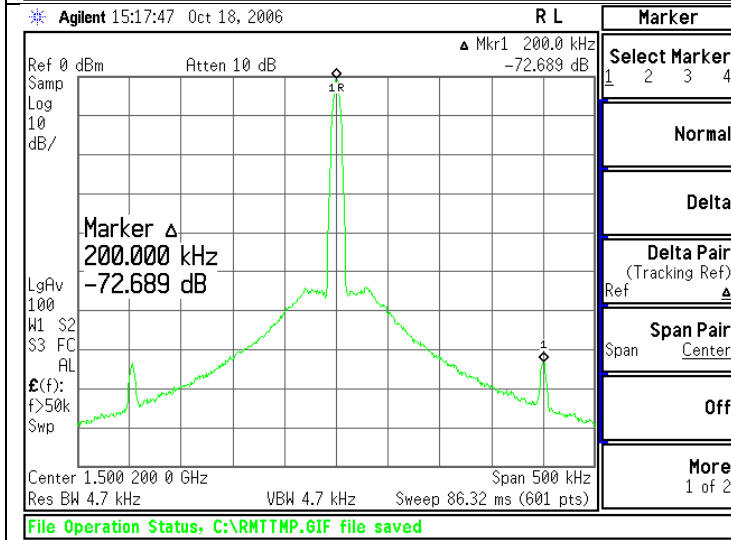


Fractional Spurs



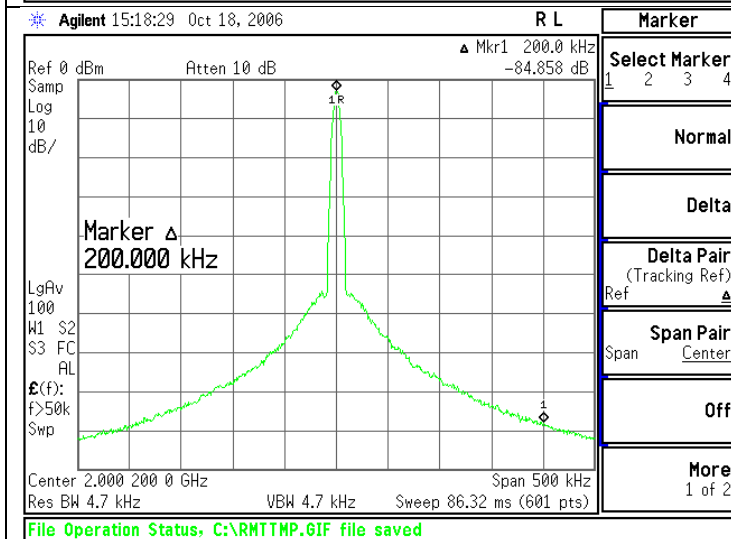
Marker	
Select Marker	1 2 3 4
Normal	
Delta	
Delta Pair (Tracking Ref)	Ref Δ
Span Pair	Span Center
Off	
More	1 of 2

Fractional spurs for a worst case fraction at 1000.2 MHz output frequency.



Marker	
Select Marker	1 2 3 4
Normal	
Delta	
Delta Pair (Tracking Ref)	Ref Δ
Span Pair	Span Center
Off	
More	1 of 2

Fractional spurs for a worst case fraction at 1500.2 MHz output frequency.

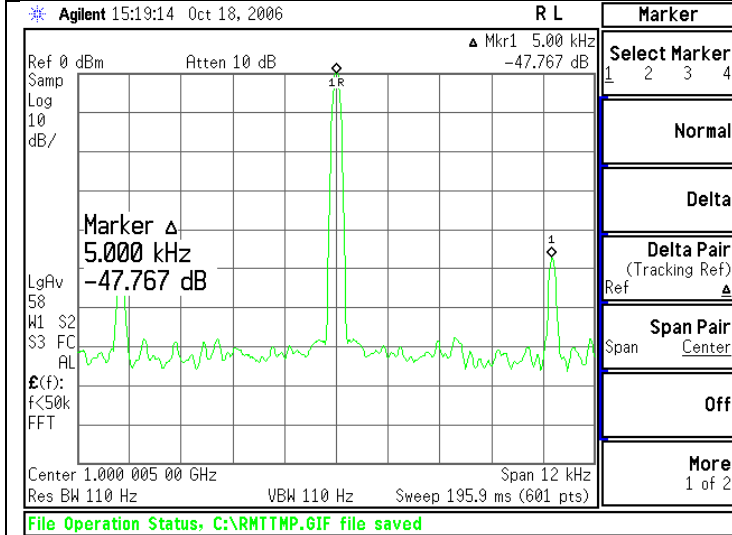


Marker	
Select Marker	1 2 3 4
Normal	
Delta	
Delta Pair (Tracking Ref)	Ref Δ
Span Pair	Span Center
Off	
More	1 of 2

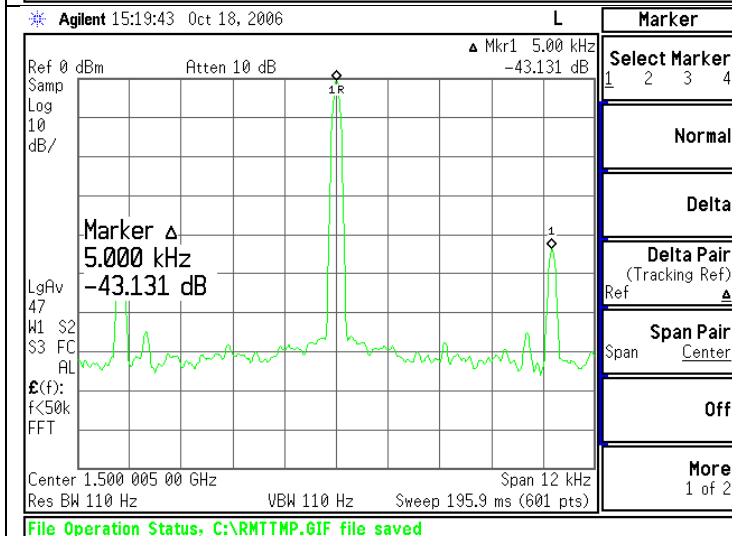
Fractional spurs for a worst case fraction at 2000.2 MHz output frequency.



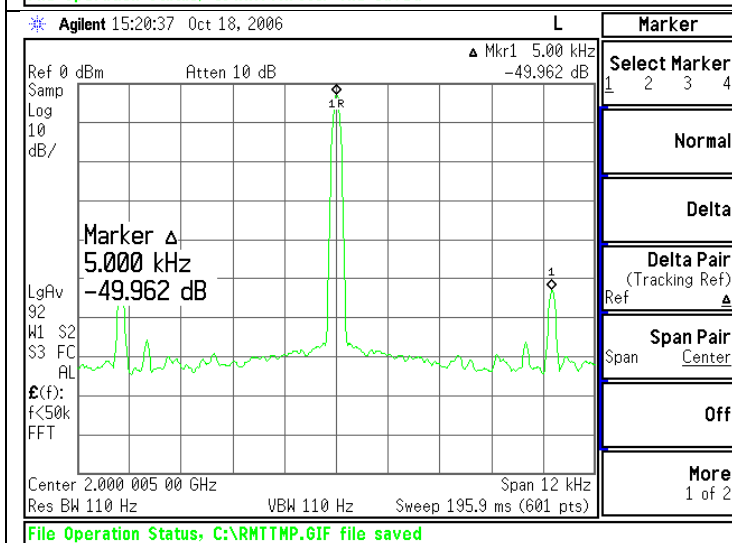
In-Band Fractional Spurs



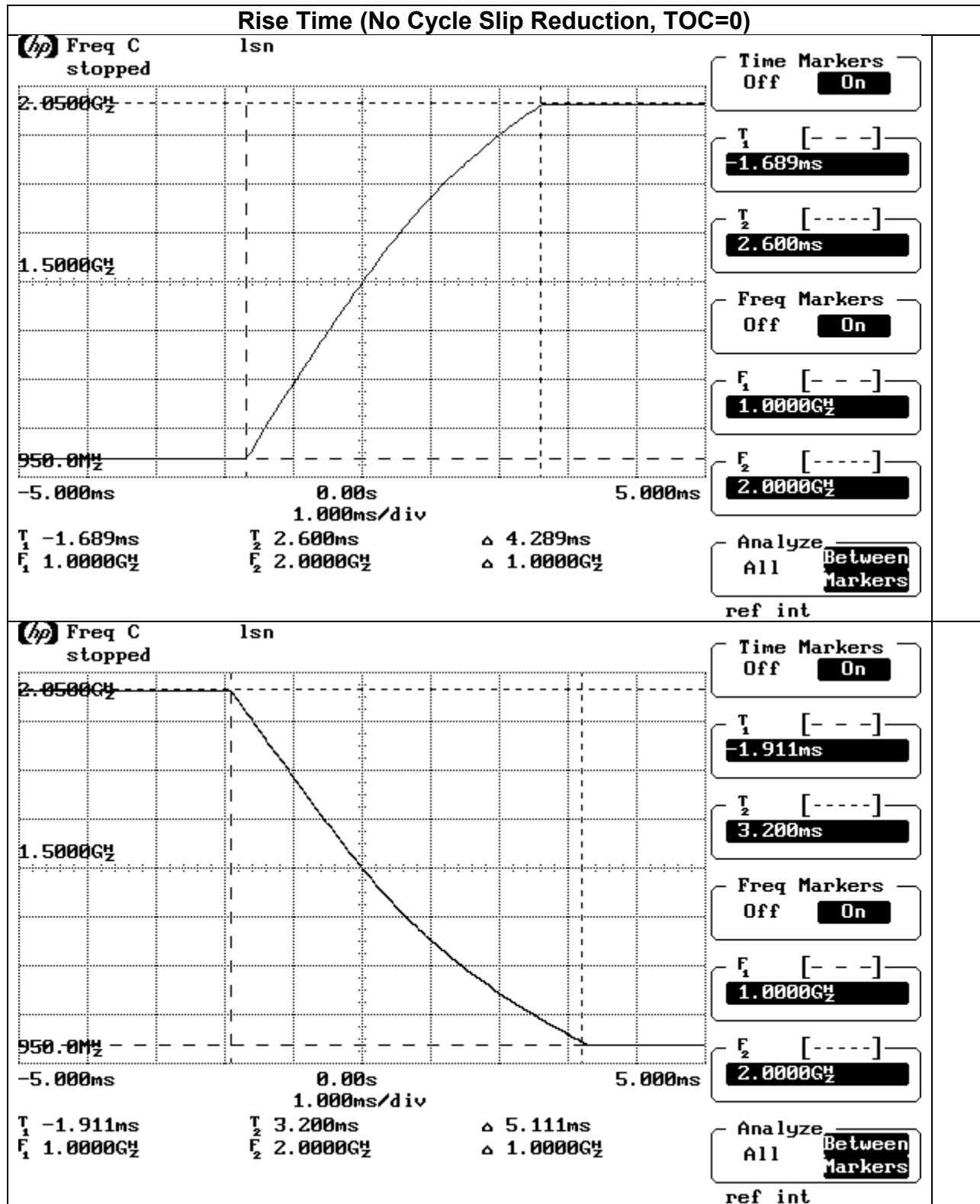
In band fractional spur for a 1000.005 MHz output frequency.

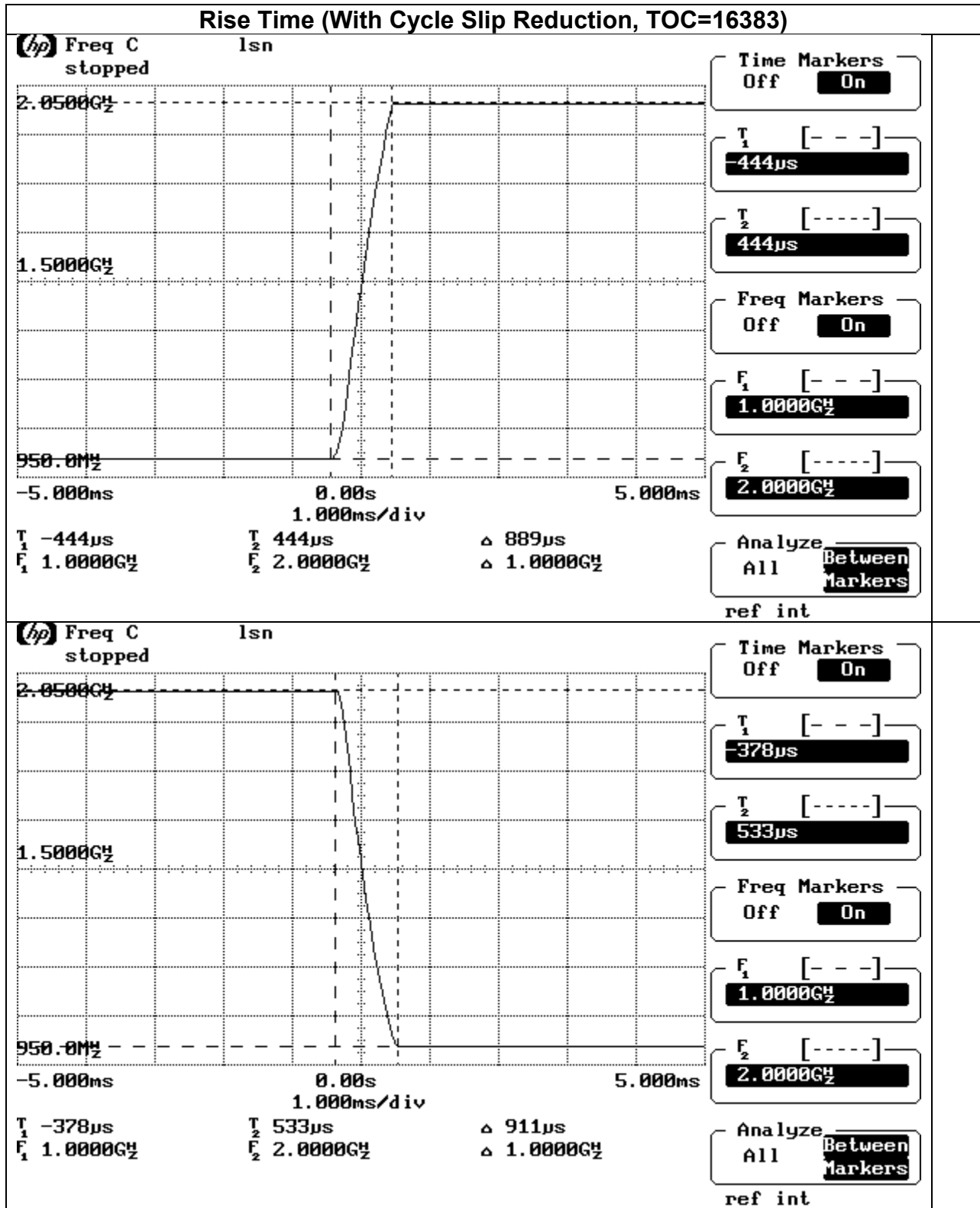


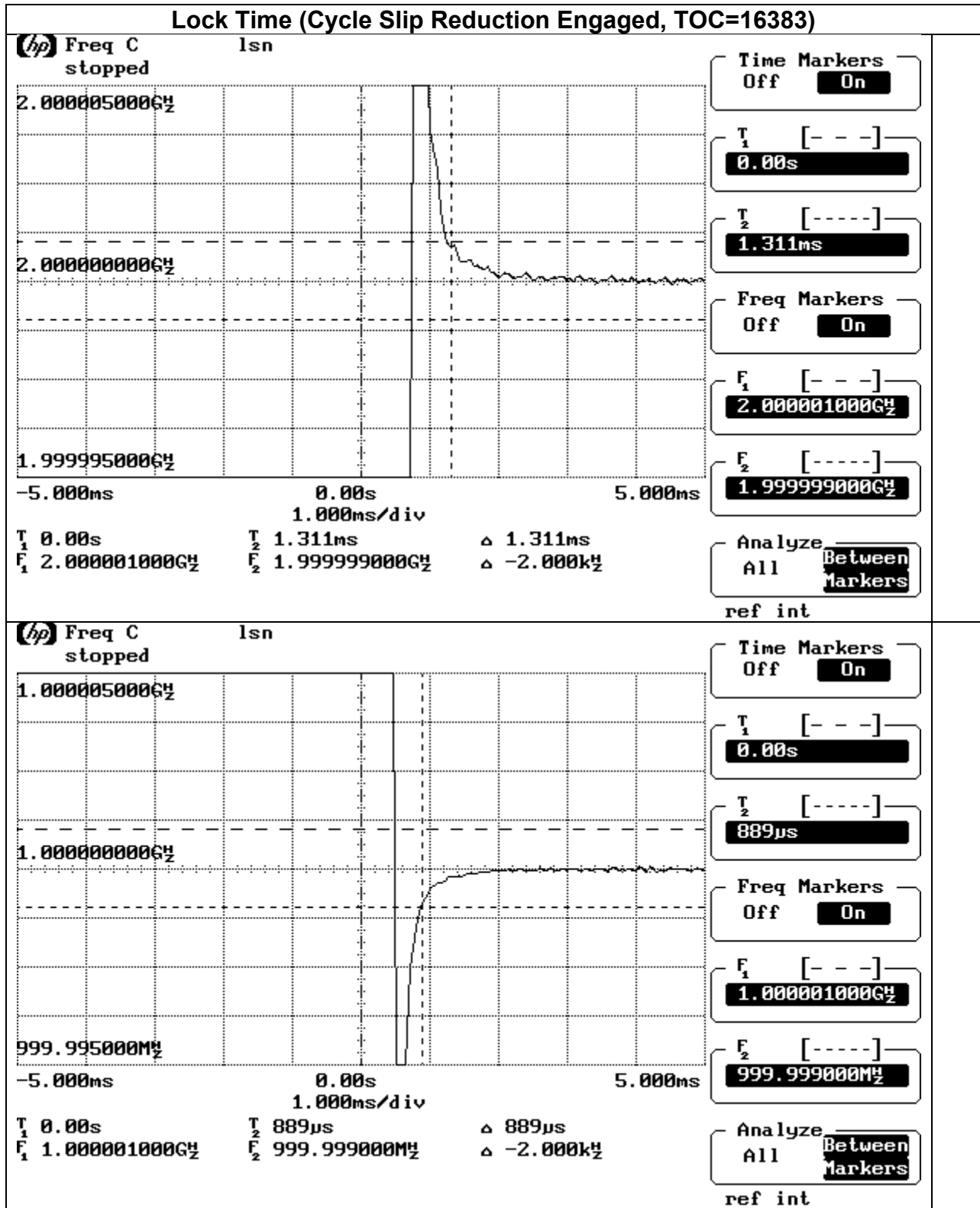
In-Band fractional spur for a 1500.005 MHz output frequency.



In-Band fractional spur for a 2000.005 MHz output frequency.

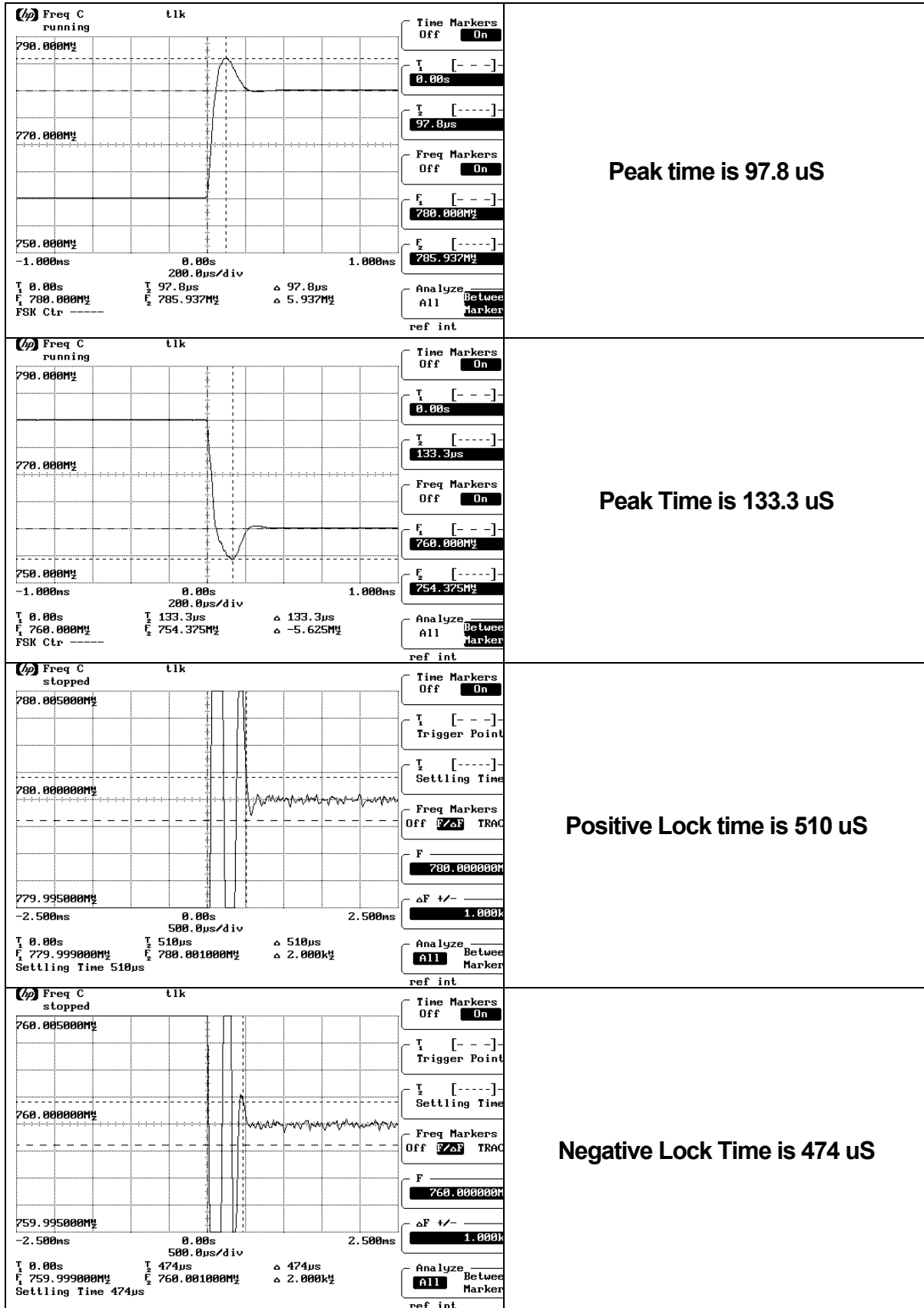








IF PLL Lock Time



Peak time is 97.8 μ s

Peak Time is 133.3 μ s

Positive Lock time is 510 μ s

Negative Lock Time is 474 μ s

IF PLL Phase Noise

Agilent 11:09:34 Oct 1, 2004 T

Carrier Freq 770 MHz **Signal Track** Off **DANL** Off **Trig** Free

Log Plot 100.00% of 50 Avg

Carrier Freq 770.0000003 MHz

Carrier Power -8.30 dBm **Atten** 0.00 dB **Mkr 4** 100.000 kHz
Ref -60.00dBc/Hz -119.38 dBc/Hz

Marker	Trace	Type	X Axis	Value
1	2	Spot Freq	100 Hz	-78.97 dBc/Hz
2	2	Spot Freq	1 kHz	-77.53 dBc/Hz
3	2	Spot Freq	10 kHz	-80.31 dBc/Hz
4	2	Spot Freq	100 kHz	-119.38 dBc/Hz

Frequency

Carrier Freq 770.000000 MHz

Carrier Search

Search Span 10.0000000 kHz
Auto Man

Signal Track On Off

Tracking

Use View/Trace menu when loading or saving logarithmic traces.

IF PLL Spurs

<p>Agilent 11:22:49 Oct 1, 2004</p> <p>Center 760.000000 MHz</p> <table border="1"> <thead> <tr> <th>Marker</th> <th>Trace</th> <th>Type</th> <th>X Axis</th> <th>Amplitude</th> </tr> </thead> <tbody> <tr> <td>1R</td> <td>(1)</td> <td>Freq</td> <td>760.000 0 MHz</td> <td>-8.35 dBm</td> </tr> <tr> <td>1Δ</td> <td>(1)</td> <td>Freq</td> <td>50.0 kHz</td> <td>-97.50 dB</td> </tr> <tr> <td>2R</td> <td>(1)</td> <td>Freq</td> <td>760.000 0 MHz</td> <td>-8.35 dBm</td> </tr> <tr> <td>2Δ</td> <td>(1)</td> <td>Freq</td> <td>-50.0 kHz</td> <td>-92.01 dB</td> </tr> </tbody> </table>	Marker	Trace	Type	X Axis	Amplitude	1R	(1)	Freq	760.000 0 MHz	-8.35 dBm	1Δ	(1)	Freq	50.0 kHz	-97.50 dB	2R	(1)	Freq	760.000 0 MHz	-8.35 dBm	2Δ	(1)	Freq	-50.0 kHz	-92.01 dB	<p>Freq/Channel</p> <p>Center Freq 760.000000 MHz</p> <p>Start Freq 759.940000 MHz</p> <p>Stop Freq 760.060000 MHz</p> <p>CF Step 12.0000000 kHz Auto Man</p> <p>Freq Offset 0.0000000 Hz</p> <p>Signal Track On Off</p>	<p>Spurs at 50 kHz offset for an output frequency of 760 MHz are -97.5 dBc.</p> <p>Note the cusping effect at 50 kHz. This is because the loop bandwidth is wide relative to the comparison frequency. This is due to the discrete sampling action of the phase detector.</p>					
Marker	Trace	Type	X Axis	Amplitude																												
1R	(1)	Freq	760.000 0 MHz	-8.35 dBm																												
1Δ	(1)	Freq	50.0 kHz	-97.50 dB																												
2R	(1)	Freq	760.000 0 MHz	-8.35 dBm																												
2Δ	(1)	Freq	-50.0 kHz	-92.01 dB																												
<p>Copyright 2000-2003 Agilent Technologies</p>																																
<p>Agilent 11:32:06 Oct 1, 2004</p> <p>Center 770.000000 MHz</p> <table border="1"> <thead> <tr> <th>Marker</th> <th>Trace</th> <th>Type</th> <th>X Axis</th> <th>Amplitude</th> </tr> </thead> <tbody> <tr> <td>1R</td> <td>(1)</td> <td>Freq</td> <td>770.000 0 MHz</td> <td>-8.35 dBm</td> </tr> <tr> <td>1Δ</td> <td>(1)</td> <td>Freq</td> <td>50.0 kHz</td> <td>-81.68 dB</td> </tr> <tr> <td>2R</td> <td>(1)</td> <td>Freq</td> <td>770.000 0 MHz</td> <td>-8.35 dBm</td> </tr> <tr> <td>2Δ</td> <td>(1)</td> <td>Freq</td> <td>-50.0 kHz</td> <td>-79.96 dB</td> </tr> </tbody> </table>	Marker	Trace	Type	X Axis	Amplitude	1R	(1)	Freq	770.000 0 MHz	-8.35 dBm	1Δ	(1)	Freq	50.0 kHz	-81.68 dB	2R	(1)	Freq	770.000 0 MHz	-8.35 dBm	2Δ	(1)	Freq	-50.0 kHz	-79.96 dB	<p>Freq/Channel</p> <p>Center Freq 770.000000 MHz</p> <p>Start Freq 769.940000 MHz</p> <p>Stop Freq 770.060000 MHz</p> <p>CF Step 12.0000000 kHz Auto Man</p> <p>Freq Offset 0.0000000 Hz</p> <p>Signal Track On Off</p>	<p>Spurs at 50 kHz offset for an output frequency of 770 MHz are -81.7 dBc.</p>					
Marker	Trace	Type	X Axis	Amplitude																												
1R	(1)	Freq	770.000 0 MHz	-8.35 dBm																												
1Δ	(1)	Freq	50.0 kHz	-81.68 dB																												
2R	(1)	Freq	770.000 0 MHz	-8.35 dBm																												
2Δ	(1)	Freq	-50.0 kHz	-79.96 dB																												
<p>File Operation Status: A:\SCREEN338.GIF file saved</p>																																
<p>Agilent 12:44:23 Oct 1, 2004</p> <p>Center 780.000000 MHz</p> <table border="1"> <thead> <tr> <th>Marker</th> <th>Trace</th> <th>Type</th> <th>X Axis</th> <th>Amplitude</th> </tr> </thead> <tbody> <tr> <td>1R</td> <td>(1)</td> <td>Freq</td> <td>780.000 0 MHz</td> <td>-8.39 dBm</td> </tr> <tr> <td>1Δ</td> <td>(1)</td> <td>Freq</td> <td>50.0 kHz</td> <td>-71.66 dB</td> </tr> <tr> <td>2R</td> <td>(1)</td> <td>Freq</td> <td>780.000 0 MHz</td> <td>-8.39 dBm</td> </tr> <tr> <td>2Δ</td> <td>(1)</td> <td>Freq</td> <td>-50.0 kHz</td> <td>-71.13 dB</td> </tr> <tr> <td>3</td> <td>(1)</td> <td>Freq</td> <td>780.000 0 MHz</td> <td>-8.39 dBm</td> </tr> </tbody> </table>	Marker	Trace	Type	X Axis	Amplitude	1R	(1)	Freq	780.000 0 MHz	-8.39 dBm	1Δ	(1)	Freq	50.0 kHz	-71.66 dB	2R	(1)	Freq	780.000 0 MHz	-8.39 dBm	2Δ	(1)	Freq	-50.0 kHz	-71.13 dB	3	(1)	Freq	780.000 0 MHz	-8.39 dBm	<p>Freq/Channel</p> <p>Center Freq 780.000000 MHz</p> <p>Start Freq 779.940000 MHz</p> <p>Stop Freq 780.060000 MHz</p> <p>CF Step 12.0000000 kHz Auto Man</p> <p>Freq Offset 0.0000000 Hz</p> <p>Signal Track On Off</p>	<p>Spurs at 50 kHz offset for an output frequency of 780 MHz are -71.7 dBc.</p>
Marker	Trace	Type	X Axis	Amplitude																												
1R	(1)	Freq	780.000 0 MHz	-8.39 dBm																												
1Δ	(1)	Freq	50.0 kHz	-71.66 dB																												
2R	(1)	Freq	780.000 0 MHz	-8.39 dBm																												
2Δ	(1)	Freq	-50.0 kHz	-71.13 dB																												
3	(1)	Freq	780.000 0 MHz	-8.39 dBm																												
<p>File Operation Status: A:\SCREEN340.GIF file saved</p>																																

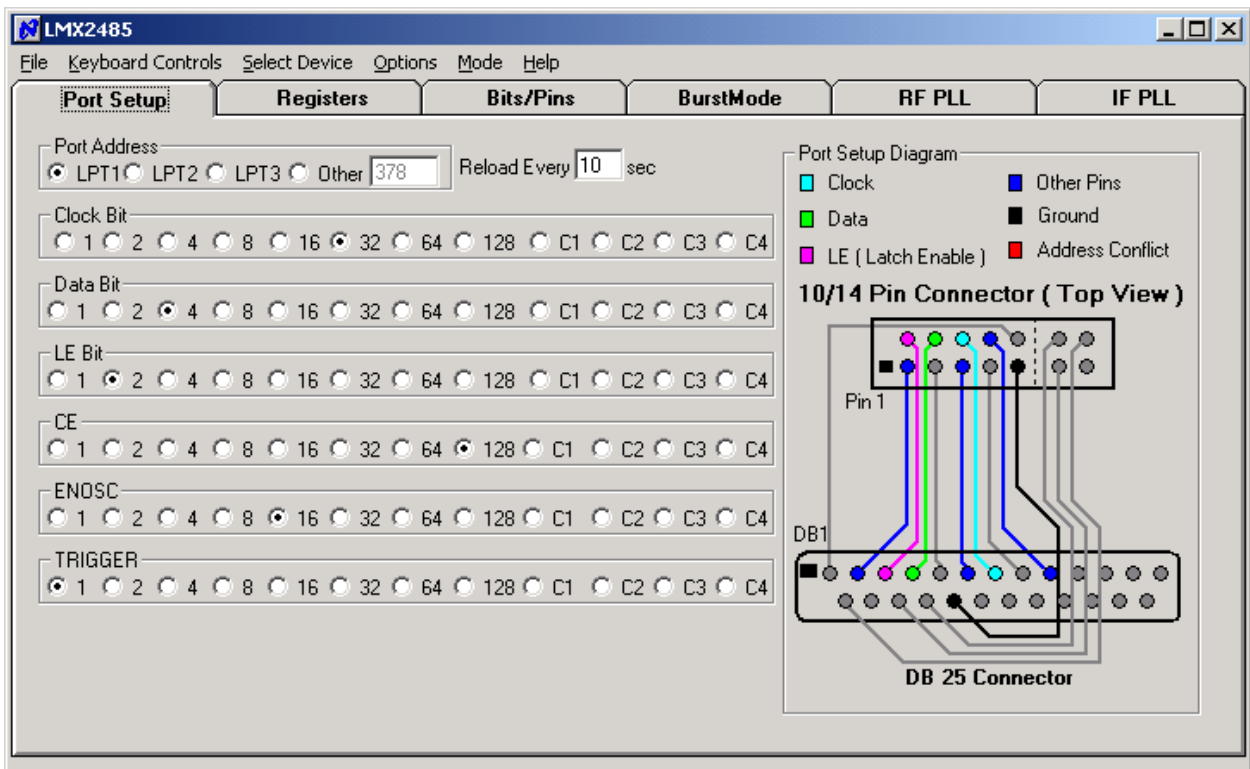
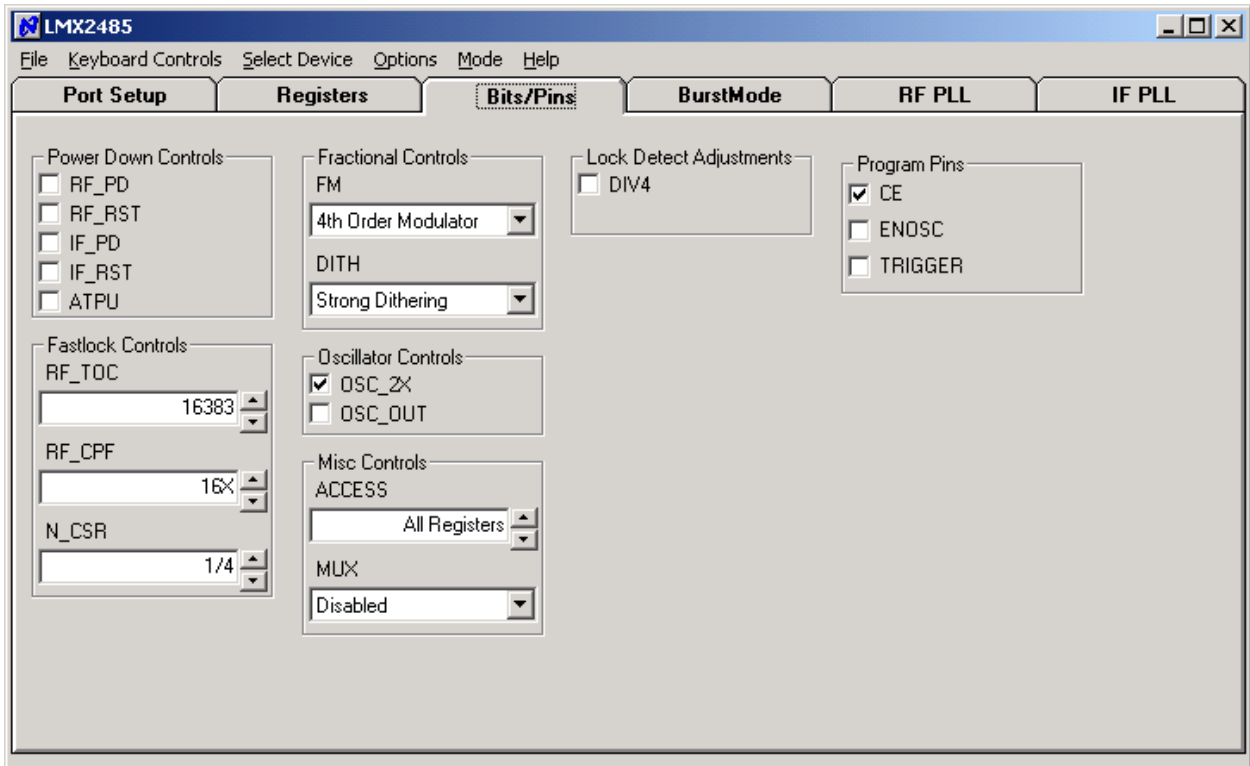
LMX2485LM6211 CodeLoader Settings

The screenshot shows the LMX2485 CodeLoader interface with the following settings:

- Mode:** LM6211 Active Filter Mode 10.25.2006
- Reference Oscillator:** 20 MHz
- Fin:** 8
- Prescaler:** 75
- N Counter:** 20000
- R Counter:** 1
- Phase Detector Freq:** 20000 kHz
- Phase Detector Polarity:** -
- Charge Pump Gain:** 4X
- Charge Pump State:** Active
- Fractional Compensation:** 0 / 1000000
- VCO Output:** 1500 MHz
- Loop Filter:** Z(s)
- Values:** C Value = 9, B Value = 0, A Value = 3

The screenshot shows the LMX2485 CodeLoader interface with the following settings:

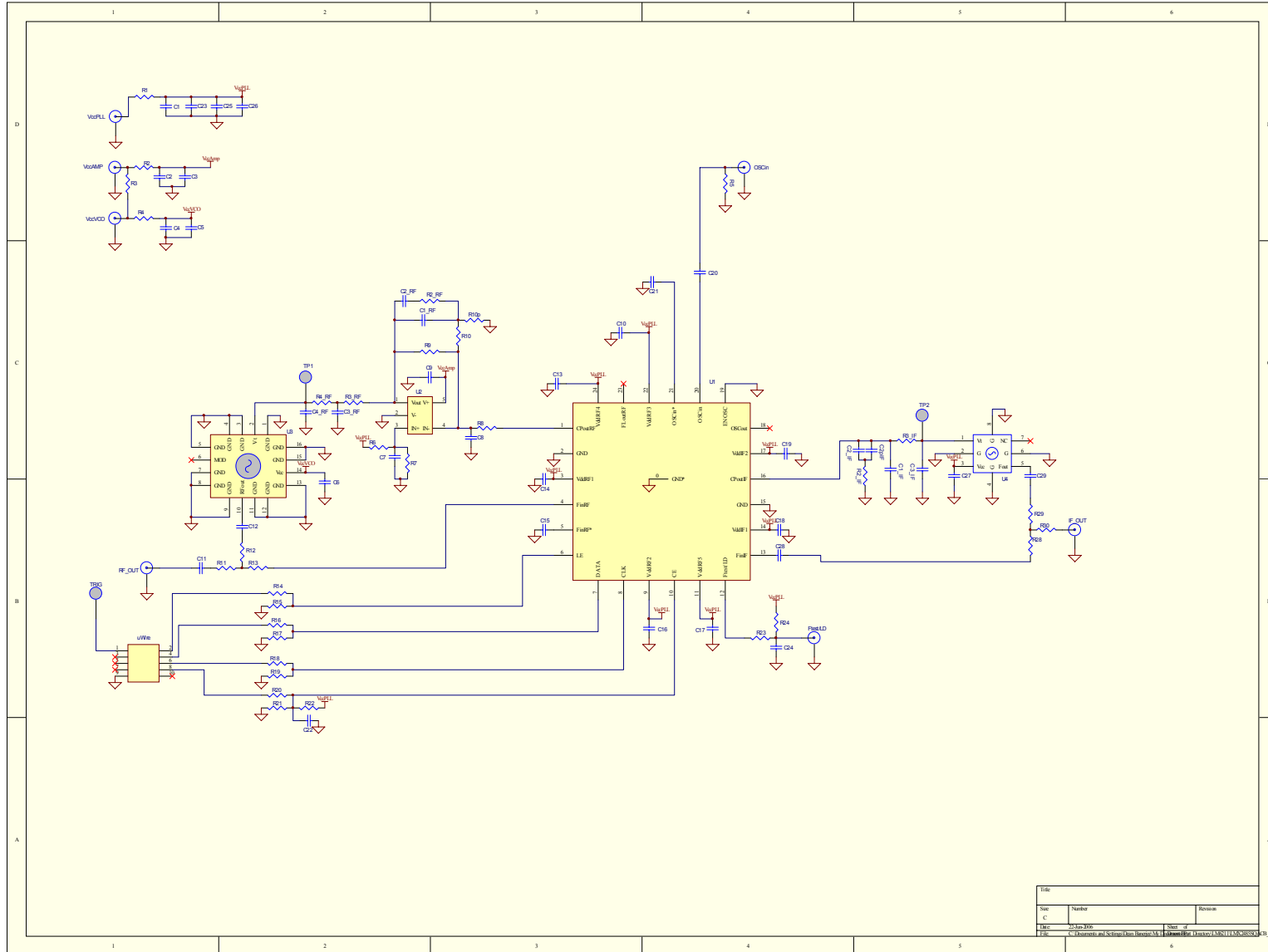
- Mode:** LM6211 Active Filter Mode 10.25.2006
- Reference Oscillator:** 10 MHz
- Fin:** 16
- Prescaler:** 15400
- N Counter:** 50
- R Counter:** 200
- Phase Detector Freq:** 50 kHz
- Phase Detector Polarity:** +
- Charge Pump Gain:** 4 mA
- Charge Pump State:** Active
- Fractional Compensation:** 0 / 1000000
- VCO Output:** 770 MHz
- Loop Filter:** Z(s)
- Values:** C Value = 962, B Value = 2, A Value = 0



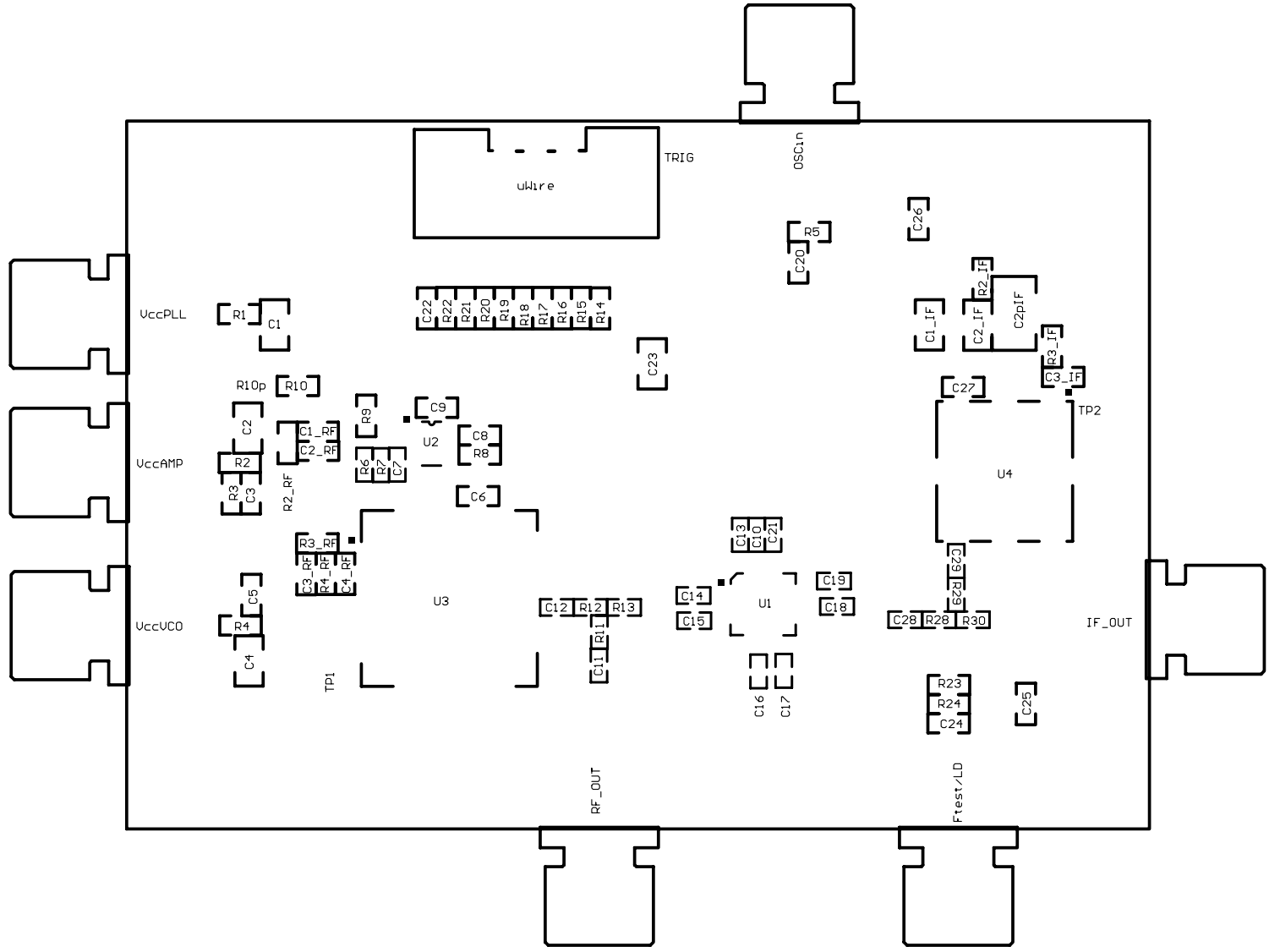
Bill of Materials

Revision		10/23/2006									
Item	Qty	Manufacturer	Part #	Value	Unit	Size	Voltage	Tolerance	Material	Designator	
0	11	Open								-- Ftest/LD - C2pIF, C3_IF, C8, C24 -- R3, R9, R10p, R22, R23, R24	
1	1	National Semiconductor	LMX248X6211FPEBPC B Rev 6-29-2006	sr=4		Second Layer is 10 mils down			FR4	n/a	
2	4	SPC Technology	SPCS-6	Stand-Offs		156mil	n/a	n/a	Nylon	Place in 4 holds in edge of board	
3	1	FCI Electronics	52601-S10-8	10-Pin	Header		n/a	n/a	Plastic	uWire	
4	6	Johnson Components	142-0701-851	Edge SMA					Metal	RF_OUT, IF_OUT, OSCin, VccPLL, VccAMP, VccVCO	
5	15	Kemet	C0603C101J5GAC	100	pF	603	50 V	5%	C0G	C6, C9, C10, C11, C12, C13, C14, C15, C16, C17, C18, C19, C27, C28, C29	
6	1	Kemet	C0603C102J5GAC	1	nF	603	50 V	5%	C0G	C4_RF	
7	1	Kemet	C0805C182J3GAC	1.8	nF	805	25 V	5%	C0G	C1_IF	
8	1	Kemet	C0603C332K5RAC	3.3	nF	603	50 V	5%	X7R	C3_RF	
9	1	Panasonic	ECHU1C103JX5	10	nF	805	16 V	5%	Film	C2_IF	
10	1	Kemet	C0603C122K5RAC	1.2	nF	805			X7R	C1_RF	
11	5	Kemet	C0603C104K3RAC	100	nF	603	25 V	10%	X7R	C3, C5, C20, C21, C26	
12	1	Kemet	C0603C473K4RACTU	47	nF	603	16 V	10%	X7R	C2_RF	
13	3	Kemet	C0603C105K3PAC	1	uF	603	25 V	10%	X5R	C7, C22, C25	
14	4	Kemet	C0805C106K8PAC	10	uF	805	10V	10%	X5R	C1, C2, C4, C23	
15	3	Vishay	CRCW0603000ZRT1	0	ohm	0603	10 V	5%	Cermaic	R3_IF, R8, R10	
16	9	Vishay	CRCW0603180JRT1	18	ohm	0603	10 V	5%	Cermaic	R1, R2, R4, R11, R12, R13, R28, R29, R30	
17	1	Vishay	CRCW0603510FRT1	51	ohm	0603	10 V	1%	Cermaic	R5	
18	1	Vishay	CRCW0603471JRT1	470	ohm	0603	10 V	5%	Cermaic	R2_RF	
19	1	Vishay	CRCW0603271JRT1	270	ohm	0603	10 V	5%	Cermaic	R3_RF	
20	1	Vishay	CRCW0603122JRT1	1.2	Kohm	0603	10 V	5%	Cermaic	R4_RF	
21	1	Vishay	CRCW0603822JRT1	8.2	Kohm	0603	10 V	5%	Cermaic	R2_IF	
22	6	Vishay	CRCW0603103JRT1	10	Kohm	0603	10 V	5%	Cermaic	R6, R7, R14, R16, R18, R20	
23	4	Vishay	CRCW0603123JRT1	12	Kohm	0603	10 V	5%	Cermaic	R15, R17, R19, R21	
24	1	National Semiconductor	LMX2485SQA	PLL	n/a	24P	3.6	n/a	Silicon	U1	
25	1	National Semiconductor	LM6211	AMP	n/a	SOT23-5	24	n/a	Silicon	U2	
26	1	SIRENZA	VCO793-1550T	950-2150	MHz	T	12 V	n/a	Can	U3	
27	1	SIRENZA	VCO191-773U	760-780	MHz	U	3 V		Can	U4	

Schematic



Build Diagram



Appendix A

LM6211 Phase Noise Evaluation for Active Loop Filters

Dean Banerjee

Introduction

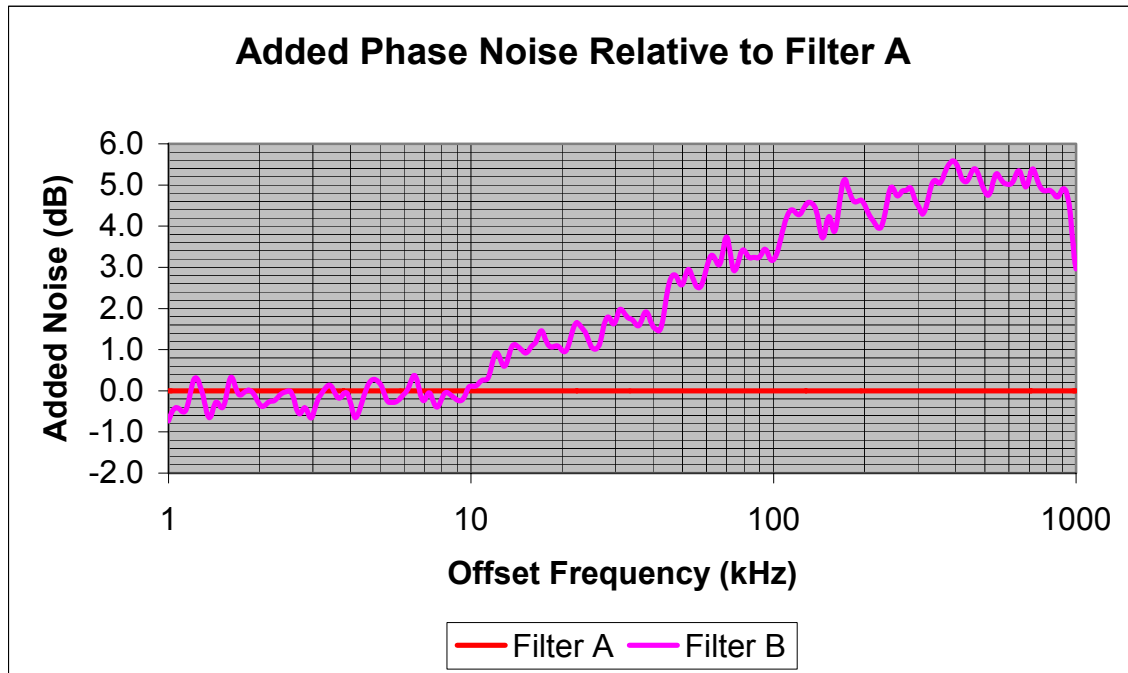
This report investigates the performance of the LM6211. For this evaluation five loop filters were designed and the performance was compared. The findings were that the LM6211 does not add very significant phase noise, except near the loop bandwidth, as simulations predict. For the active filters, a type A filter was used. In this type of filter, a bias voltage is established at the non-inverting input of the op-amp, and C1, C2, and R2 go in the feedback path of the op-amp. Series 39 k Ω and 12 k Ω resistors were used to divide down the op-amp supply of 5 volts down to a bias voltage of around 1.2 volts. Also, a 1 μ F capacitor was placed in parallel with the 12 k Ω resistor in order to reduce the resistor noise. The utility board was used in order to obtain these results.

Setup

Parameter	Units	Value
PLL	<i>n/a</i>	LMX2471
VCO	<i>n/a</i>	Varil 1960U
op-amp	<i>n/a</i>	LM6211
VccPLL	V	2.75
VccVCO	V	3.3
VccAMP	V	5.0
K ϕ	<i>mA</i>	0.8
Kvco	MHz/V	45
N	<i>n/a</i>	1960
Fout	MHz	1960
Fcomp	kHz	1000

Parameter	Unit	Filter A	Filter B	Filter C	Filter D	Filter E
Filter Type	<i>n/a</i>	Passive	Active	Passive	Active	Active
Filter Order	<i>n/a</i>	2 nd		3 rd	3 rd	3 rd
Phase Margin	<i>deg</i>	50.57		46.3	49.13	46.56
Bandwidth	kHz	10.2		9.88	9.55	9.73
T3/T1 Ratio	%	0.0		8.96	91.79	1170.96
C1	nF	0.82		0.33	0.82	0.15
C2	nF	8.2		8.2	12	12
C3	nF	0.0		0.56	1.0	1.0
R2	k Ω	3.3		3.3	3.3	3.3
R3	k Ω	0.0		1.8	2.7	5.6

Results for Second Order Filters

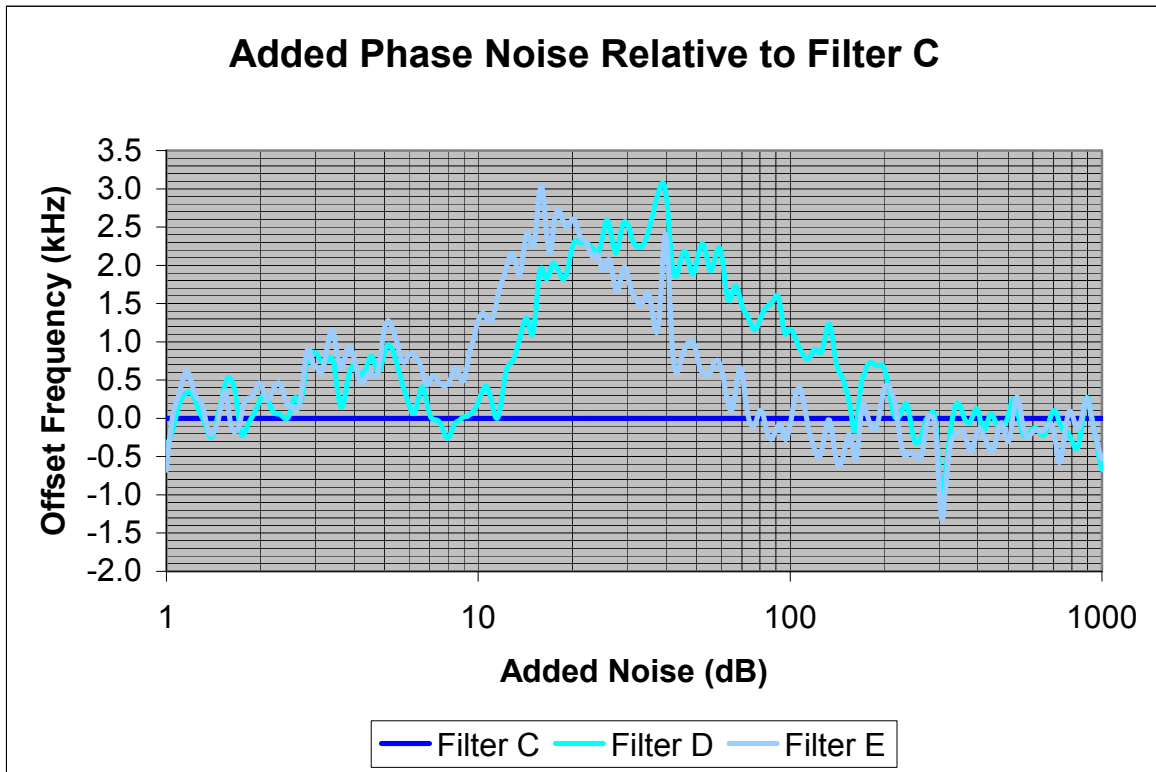


	Filter A	Filter B
Lock time from 1930 to 1990 MHz to 1 kHz	467 uS	380 uS
Lock time from 1990 to 1930 MHz to 1 kHz	300 uS	280 uS
Peak time from 1930 to 1990 MHz	109 uS	51 uS
Peak time from 1990 to 1930 MHz	38 uS	44 uS

Filter A: This is a basic second order passive loop filter which is used as a baseline for comparison.

Filter B: This is the same thing as filter A, except for there is an op-amp attached. This was never intended to be a good design, but rather something to make easy comparisons to filter A. As the measurements show, there is about 5 dB added phase noise out around 300 kHz. The ironic thing is the lock time is improved. The reason for this is that the loop filter is biased at 1 volt tuning voltage. This keeps the charge pump away from the rails and helps lock times. Note that filter A is struggling to get to 1990 MHz and the charge pump gain is giving out here. Although this was not measured, because the spur levels were too low, the spurs for the active loop filter should be better as well, since the charge pump is based closer to the center of the charge pump supply.

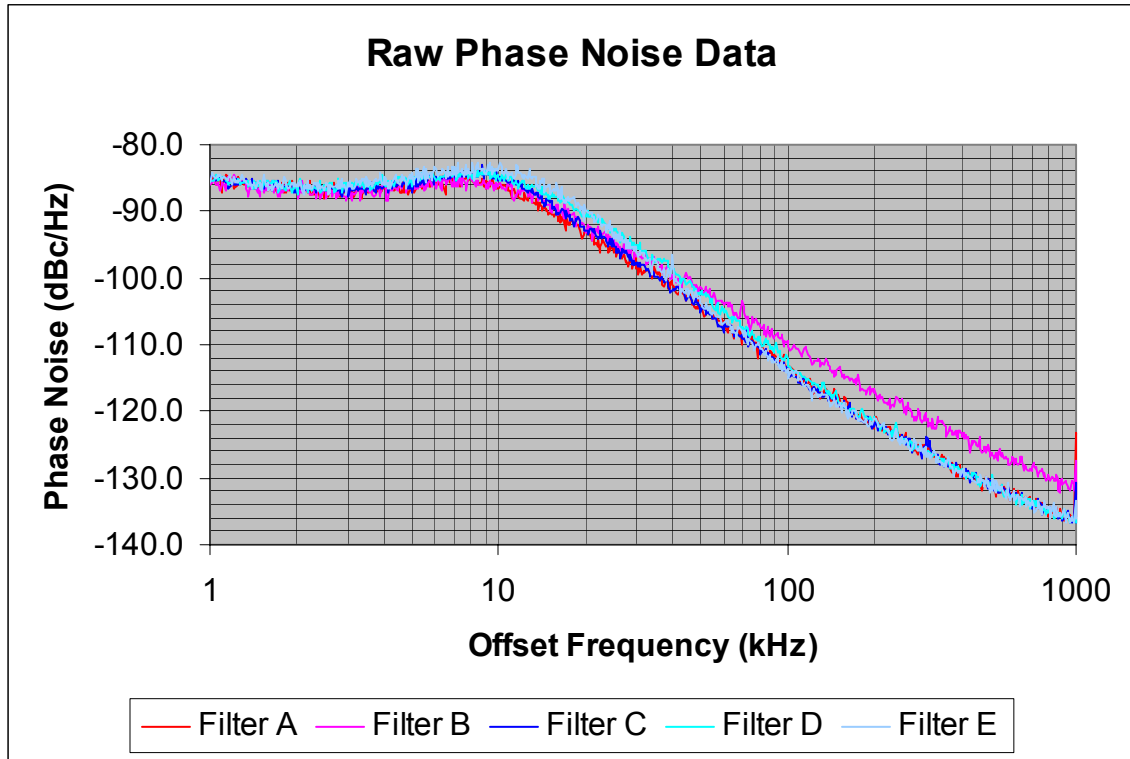
Results for Third Order Filters



Filter C: This is a passive third order loop filter used for comparisons. Now because the insertion of the op-amp does move the poles of the filter around, it is necessary to change the component values to compensate for this.

Filter D: This is an active third order loop filter. For this filter the T3/T1 ratio was about 92%, so the poles T3 and T1 are about equal. One advantage of the op-amp is that T3/T1 can be made close to or even equal to 100%, because of the added isolation of the op-amp. The most significant phase noise contribution is about 2.5 dB around 20 kHz offset. This noise contribution here may be slightly understated because this loop filter had a slightly higher phase margin and a lower loop bandwidth than filter C. Note that several rolling averages were applied to the raw data to smooth out the curves.

Filter E: The strategy behind this filter is the "pole switch" trick. For this type of filter, the poles T3 and T1 are swapped such that T3 is the larger pole. This can only be effectively done for active filters. By putting the bigger pole after the op-amp instead of before it, the op-amp noise contribution is reduced. The T3/T1 ratio for this filter is 1171%, which gives the same transfer function as having a pole ratio of, 8.5%, except for the op-amp noise is attenuated more. The most significant phase noise contribution is about 2.5 dB around 30 kHz offset. As in the case of filter E, several moving averages were applied to smooth the data.



IMPORTANT NOTICE

Texas Instruments Incorporated and its subsidiaries (TI) reserve the right to make corrections, modifications, enhancements, improvements, and other changes to its products and services at any time and to discontinue any product or service without notice. Customers should obtain the latest relevant information before placing orders and should verify that such information is current and complete. All products are sold subject to TI's terms and conditions of sale supplied at the time of order acknowledgment.

TI warrants performance of its hardware products to the specifications applicable at the time of sale in accordance with TI's standard warranty. Testing and other quality control techniques are used to the extent TI deems necessary to support this warranty. Except where mandated by government requirements, testing of all parameters of each product is not necessarily performed.

TI assumes no liability for applications assistance or customer product design. Customers are responsible for their products and applications using TI components. To minimize the risks associated with customer products and applications, customers should provide adequate design and operating safeguards.

TI does not warrant or represent that any license, either express or implied, is granted under any TI patent right, copyright, mask work right, or other TI intellectual property right relating to any combination, machine, or process in which TI products or services are used. Information published by TI regarding third-party products or services does not constitute a license from TI to use such products or services or a warranty or endorsement thereof. Use of such information may require a license from a third party under the patents or other intellectual property of the third party, or a license from TI under the patents or other intellectual property of TI.

Reproduction of TI information in TI data books or data sheets is permissible only if reproduction is without alteration and is accompanied by all associated warranties, conditions, limitations, and notices. Reproduction of this information with alteration is an unfair and deceptive business practice. TI is not responsible or liable for such altered documentation. Information of third parties may be subject to additional restrictions.

Resale of TI products or services with statements different from or beyond the parameters stated by TI for that product or service voids all express and any implied warranties for the associated TI product or service and is an unfair and deceptive business practice. TI is not responsible or liable for any such statements.

TI products are not authorized for use in safety-critical applications (such as life support) where a failure of the TI product would reasonably be expected to cause severe personal injury or death, unless officers of the parties have executed an agreement specifically governing such use. Buyers represent that they have all necessary expertise in the safety and regulatory ramifications of their applications, and acknowledge and agree that they are solely responsible for all legal, regulatory and safety-related requirements concerning their products and any use of TI products in such safety-critical applications, notwithstanding any applications-related information or support that may be provided by TI. Further, Buyers must fully indemnify TI and its representatives against any damages arising out of the use of TI products in such safety-critical applications.

TI products are neither designed nor intended for use in military/aerospace applications or environments unless the TI products are specifically designated by TI as military-grade or "enhanced plastic." Only products designated by TI as military-grade meet military specifications. Buyers acknowledge and agree that any such use of TI products which TI has not designated as military-grade is solely at the Buyer's risk, and that they are solely responsible for compliance with all legal and regulatory requirements in connection with such use.

TI products are neither designed nor intended for use in automotive applications or environments unless the specific TI products are designated by TI as compliant with ISO/TS 16949 requirements. Buyers acknowledge and agree that, if they use any non-designated products in automotive applications, TI will not be responsible for any failure to meet such requirements.

Following are URLs where you can obtain information on other Texas Instruments products and application solutions:

Products

Audio	www.ti.com/audio
Amplifiers	amplifier.ti.com
Data Converters	dataconverter.ti.com
DLP® Products	www.dlp.com
DSP	dsp.ti.com
Clocks and Timers	www.ti.com/clocks
Interface	interface.ti.com
Logic	logic.ti.com
Power Mgmt	power.ti.com
Microcontrollers	microcontroller.ti.com
RFID	www.ti-rfid.com
OMAP Mobile Processors	www.ti.com/omap
Wireless Connectivity	www.ti.com/wirelessconnectivity

Applications

Automotive and Transportation	www.ti.com/automotive
Communications and Telecom	www.ti.com/communications
Computers and Peripherals	www.ti.com/computers
Consumer Electronics	www.ti.com/consumer-apps
Energy and Lighting	www.ti.com/energy
Industrial	www.ti.com/industrial
Medical	www.ti.com/medical
Security	www.ti.com/security
Space, Avionics and Defense	www.ti.com/space-avionics-defense
Video and Imaging	www.ti.com/video

TI E2E Community Home Page

e2e.ti.com

Mailing Address: Texas Instruments, Post Office Box 655303, Dallas, Texas 75265
Copyright © 2012, Texas Instruments Incorporated