

DS16EV51-AEVKH HDMI Extender Demo Kit for HDMI Cables

General Description

The DS16EV51-AEVKH HDMI Cable Extender Demo Kit provides a complete HDMI system extension solution using National's DS16EV5110A - a Video Equalizer for HDMI cables.

Two HDMI female connectors are used as the input and the output connections for a HDMI system.

The DDC signals, Hot Plug, 5V Power and 5V Ground are directly connected between the HDMI connectors, making this demo kit HDCP compliant.

A 3.3V VCC 1-pin header (J4) and a GND 1-pin header (J5) are used for the power supply.

Alternately, an AC/DC power adapter (>800mA) is required for the evaluation kit to provide 5V DC voltage for easy portability. A 1.8mm DC Power Jack is used to connect the AC/DC Power Adapter. National's LP3965, a 3.3V, 1500mA, Fast, Ultra Low Dropout Linear Regulator, converts the 5V power supply voltage to a 3.3V power supply voltage that powers the DS16EV5110A.

Features

- **Compatible with DTV Resolutions 480i, 480p, 720i, 720p, 1080i, 1080p, and 1080p with 12 bit deep color depth.**
- **Compatible with Computer Resolutions of VGA, SVGA, XGA, SXGA, UXGA**
- **Supports TMDS HDMI Single Link**
- **Adjustable rotary switch for easy custom EQ boost level setting to reach maximum length of TMDS Interface with Twisted Pair , HDMI, or DVI Cables**
- **Single 3.3V Supply**
- **Ultra Portable with AC/DC Power Adapter (not included in the kit)**
- **500 mW Typical Power Consumption**
- **> 6kV ESD Rating**
- **-40 to 85C Industrial Temperature Range**
- **The DS16EV5110A demo kit extends TMDS with the 28 AWG STP HDMI cable as follows:**

	Resolution	Pixel bandwidth (MPixel/s) 60Hz LCD with 20% blanking	Per channel bandwidth (Gb/s) 60Hz LCD with 20% blanking	28 AWG HDMI Cable Length
SDTV (480p)	704 x 480	25	0.25	> 45 m
HDTV (720p)	1280 x 720	66.4	0.664	> 35 m
HDTV (1080i)	1920 x1080	75	0.75	> 35 m
HDTV (1080p)	1920 x1080	150	1.5	> 25 m
HDTV (1080p) 12 bit Deep Color Depth	1920 x1080	225	2.25	> 20 m

Applications

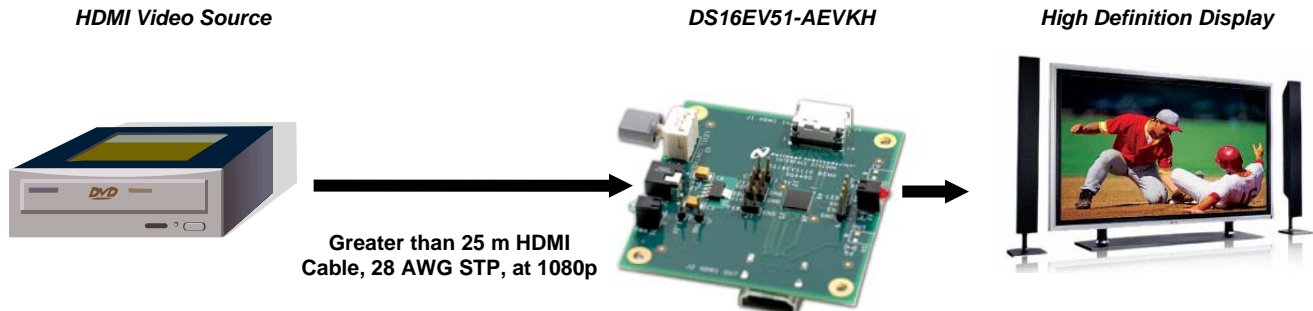
High Definition Displays and Televisions
High Definition Front- Projectors
LCD Computer Monitors
HDMI Cable Extender

Ordering Information

PART: DS16EV5110ASQ

HDMI Demo Board for HDMI Cables: DS16EV51-AEVKH

Typical Repeater Application



Bill of Materials

DESIGNATION	QTY	DESCRIPTION
C2, C4, C8, C10	4	0.01uF \pm 10% Ceramic Capacitor 0402
C1, C3, C7, C9, C11	5	0.1uF \pm 10% Ceramic Capacitor 0402
C5	1	33uF \pm 10% Tantalum Capacitor 3528-12
C6	1	68uF \pm 10% Tantalum Capacitor 3528-12
D1	1	LED Green
D2	1	LED Red
R5	1	0 ohm \pm 5% Resistor 0402
R1, R2	2	453 ohm \pm 5% Resistor 0402
R7	1	10K ohm \pm 5% Resistor 0402
J1, J2	2	HDMI Receptacle Female
J3	1	DC Power Jack 1.8 mm
J4, J5	2	1 pin header (J4: VDD=3.3V, J5:GND)
J7, J8, J10, J11	4	1X2 pin header
J9	1	1X4 pin header
D3, D4, R3, R4	4	Optional
U1	1	National DS16EV5110A
U2	1	National LP3965 – 3.3V -1500mA
U3	1	94HBB08RAT Rotary Dip Switch

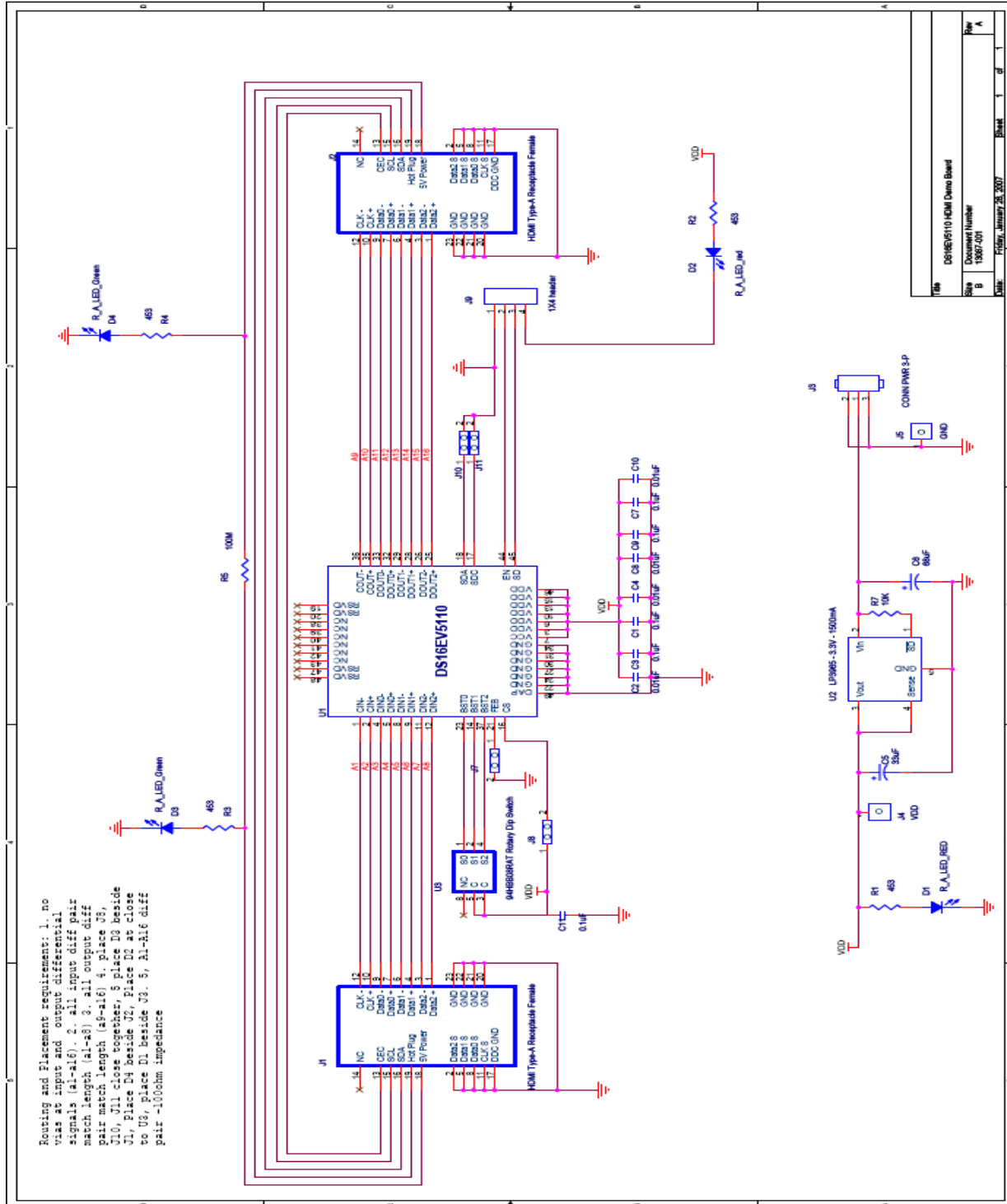
Quick Start Guide:

1. Connect 3.3V DC power to J4 and ground to J5 from the power supply.
Or, plug the AC/DC power adapter to the DC power Jack
AC/DC power adapter requirement: Output DC 4V~6V, Output current > 800mA
2. Attach two HDMI cables to the HDMI Input and Output Connectors
3. Turn on the DVD/Computer and the Monitor/HDTV.

Adjustment and Control Description

Component	Name	Function
D1	PWR	The LED turns on when 5V DC applies
D2	SD	The LED turns on when the DS16EV5110A does not detect clock signal
J3	5V DC	Optional DC Power Jack for 1.5 mm Adaptor Plug
J4	3.3V	3.3V VCC power supply
J5	GND	GND
J7	FEB	Optional SMBus Control. See Datasheet.
J8	CS	Optional SMBus Control. See Datasheet
J10, J11	SDA, SDC	Optional SMBus access. See Datasheet
J9	Loop Back Control	Connect "LED" and "SD" to enable D2 function. Connect "SD" and "EN" to enable look back control function. When the clock signal is not detected, the DS16EV5110A sets to power down mode.
U3	Rotary Switch	Turn the switch to control the EQ boost setting. "0" on the switch refers to the boost setting of "0X00", "7" on the switch refers to the boost setting of "0X07". See datasheet for detail Boost setting information.

Schematics



Layout Considerations

- Keep the clock and data transmission lines as short as possible with controlled 50 ohm single-ended impedance. Or, use differentially coupled traces with 100 ohm impedance.
- Avoid using vias on the clock and data transmission lines on the input side of the DS16EV5110A.
- Place power supply decoupling capacitors close to the VCC pins.

