

LMR24210,LMR24220

Application Note 2170 LMR24210/20 Evaluation Board



Literature Number: SNVA495

LMR24210/20 Evaluation Board

Texas Instruments
Application Note 2170
Ismail Jorio, Giuseppe Pinto
November 1, 2011



Introduction

The LMR24210/20 Step Down Switching Regulator features all required functions to implement a cost effective, efficient buck power converter capable of supplying up to 1.0A or 2.0A. The Constant On-Time (COT) regulation scheme requires no loop compensation, results in a fast load transient response and simple circuit implementation, this allows low component count, and consequently very small overall board space. The regulator can function properly even with an all ceramic output capacitor network, and does not rely on the output capacitor's ESR for stability.

The LMR24210/20 has a wide input range from 4.5V-42V, making it suitable for a variety of applications from automotive to power conditioning of unregulated sources. The LMR24210/20 Evaluation Board is designed to provide the design engineer with a fully functional power converter to evaluate the LMR24210/20 series of buck regulators.

Features

- 4.5V to 42V Input Voltage Range
- 3.3V Output Voltage (default setting)
- Up to 2000 mA Output Current (LMR24220)
- Up to 1000 mA Output Current (LMR24210)
- Switching Frequency of 500 KHz (default setting)
- PCB size: 46.8mm x 27.4mm

Enable Option

Install R4, R5 and D1 to enable the part at a desired input voltage. A voltage higher than 1.26V on the EN pin will enable the device. Use the EN post to disable the device by pulling this node to GND. A logic signal may be applied, to the post, to test startup and shutdown of the device. Leaving the EN pin open will enable the device at internal UVLO level.

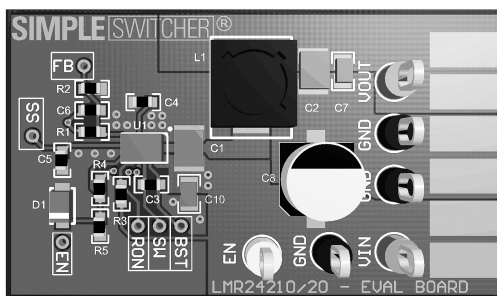
Adjusting the Output Voltage

The output voltage can be changed from 3.3V to another voltage by adjusting the feedback resistors using the following equation:

$$V_{OUT} = V_{FB}(1+(R1/R2))$$

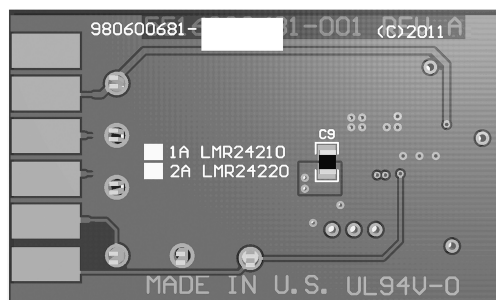
Where V_{FB} is 0.8V.

For more information on component selection and features see the LMR24210/20 datasheet.



Top View

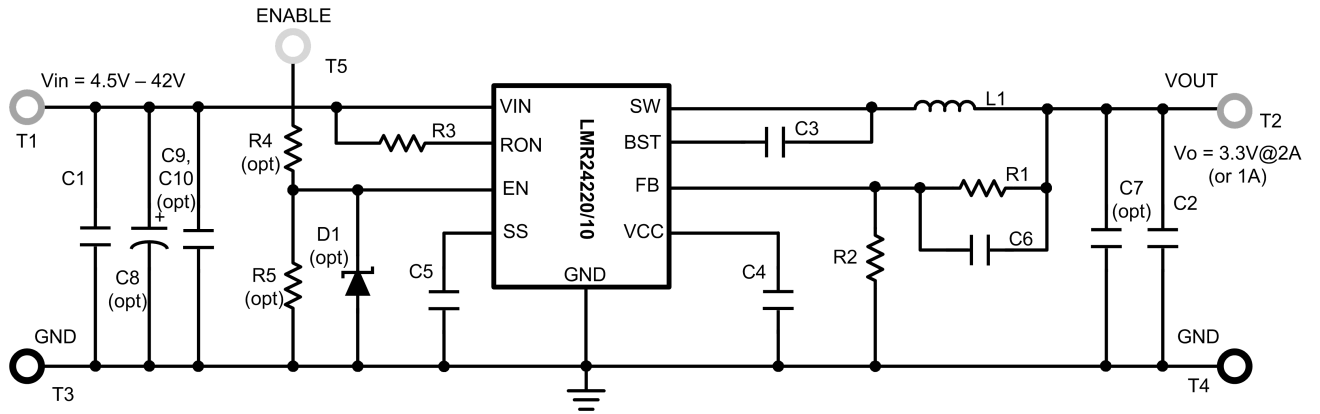
30167702



Bottom View

30167703

FIGURE 1. LMR24210/20 Evaluation Board



30167701

FIGURE 2. LMR24210/20 Evaluation Board Schematic

Bill of Materials (BOM) LMR24210/20

Designation	Description	Size	Manufacturer Part #	Vendor
C1	Cap 10 μ F 50V X5R	1210	UMK325BJ106MMT	Taiyo Yuden
C2	Cap 47 μ F 10V X5R	1210	GRM32ER61A476KE20L	Murata
C3,C5,C6	Cap 0.01 μ F 100V X7R	0603	06031C103MAT2A	AVX
C4	Cap 1 μ F 10V X5R	0603	C0603C105K8PACTU	Kemet
R1	RES, 31.6k ohm, 1%, 0.1W	0603	CRCW060331K6FKEA	Vishay
R2	RES, 10.2k ohm, 1%, 0.1W	0603	CRCW060310K2FKEA	Vishay
R3	RES, 49.9k ohm, 1%, 0.1W	0603	CRCW060349K9FKEA	Vishay
L1	Shielded Inductor 8.2 μ H 2.53A		DR74-8R2-R	Colitronics
U1	IC LMR24210/20	28-ball μ SMD	LMR24210/20MH	TI
R4,R5	optional			
C7,C8,C9,C10	optional			
D1	optional			
T1,T2	test point (orange)	Keystone5013		
T3,T4	test point (black)	Keystone5011		
T5	test point (yellow)	Keystone5014		

Optional components

R4,R5 set the input voltage level at which the device is enabled.

D1 is a zener diode that clamps the voltage on the EN pin. A 5.1V zener is suggested.

C7 is an additional output capacitor.

C8 is an input bulk capacitor. The bulk capacitor should be located near the Power-supply connection point. The purpose of the bulk capacitor is to overcome the inductive effects of bench wiring.

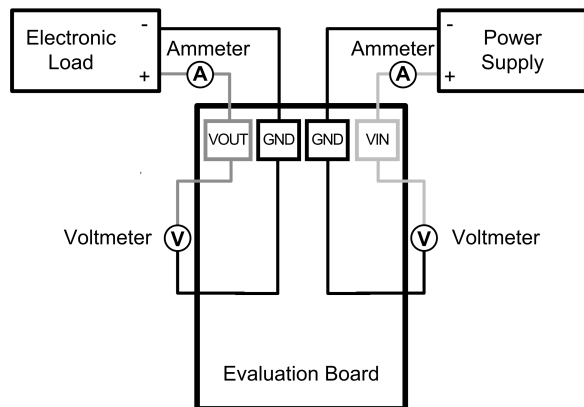
C9,C10 are additional input capacitors.

Test Setup

Demonstration Board Quick Setup Procedures

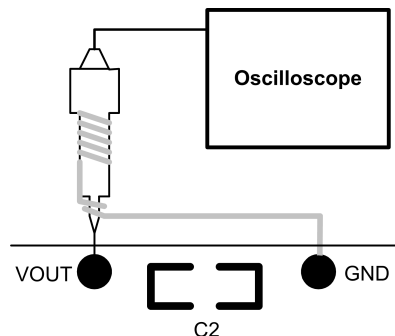
Step	Description	Notes
1	Connect a power supply to V_{IN} terminals	V_{IN} range: 4.5V to 42V
2	Connect a load to V_{OUT} terminals	I_{OUT} range: 0A to 2.0A (or 1A)
3	EN should be left floating for normal operation. Short this to ground to shutdown the part	
4	Turn on V_{IN} with 0A load applied, check V_{OUT} with a voltmeter	Nominal 3.3V
5	Apply a 2.0A (or 1A) load and check V_{OUT}	Nominal 3.3V

Efficiency Measurements



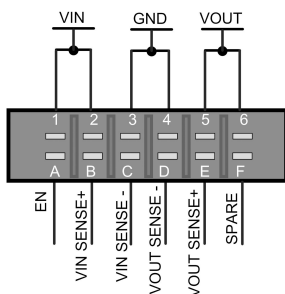
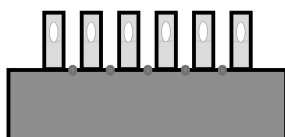
30167710

Voltage Ripple Measurements



30167711

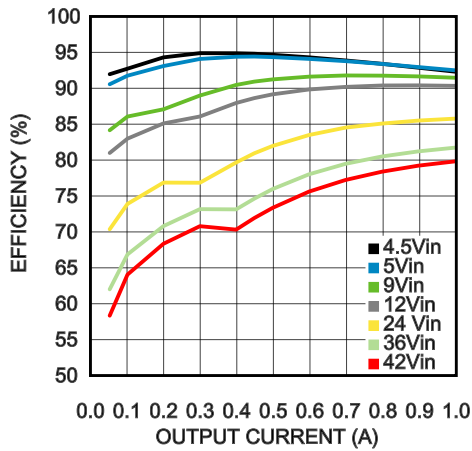
Edge Connector Schematic



30167712

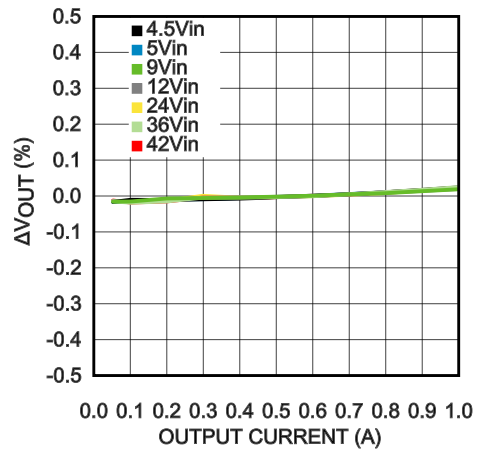
Typical Performance Characteristics for LMR24210

Efficiency vs. Load Current



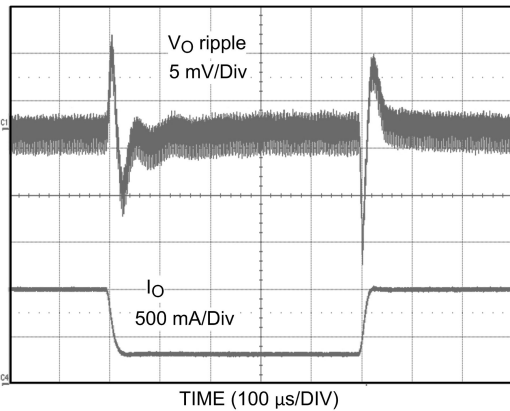
30167722

Load Regulation



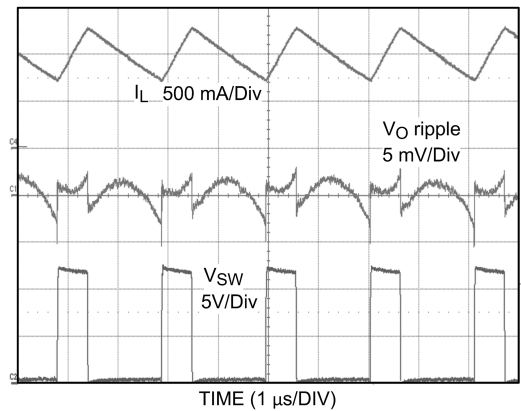
30167724

Load Transient Waveforms 300mA to 1A, 12VIN



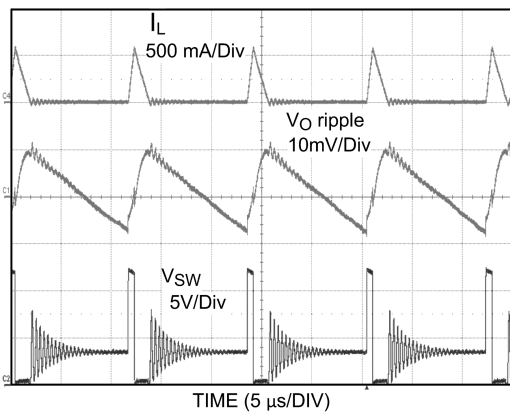
30167718

Switching Waveforms CCM, 1A, 12VIN



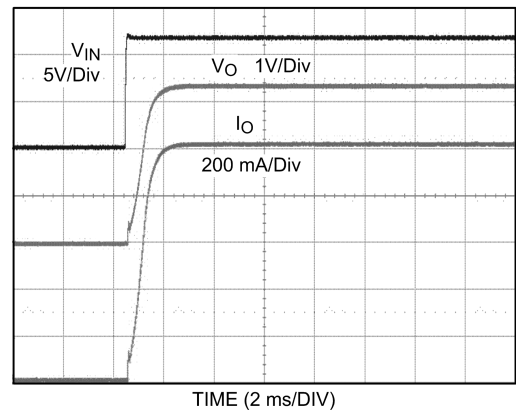
30167717

Switching Waveforms DCM, 50mA, 12VIN



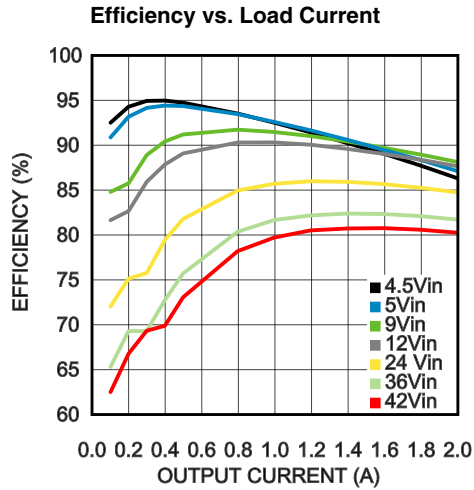
30167715

Startup Waveforms

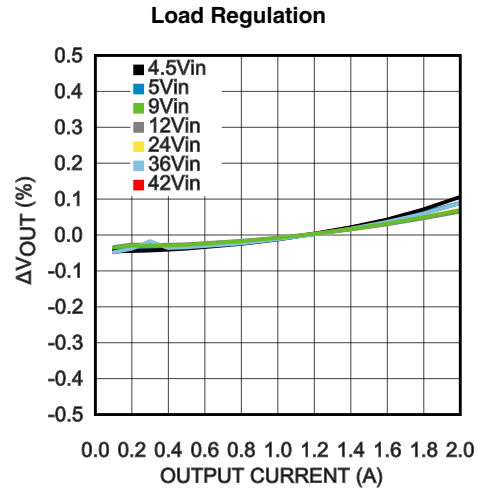


30167719

Typical Performance Characteristics for LMR24220

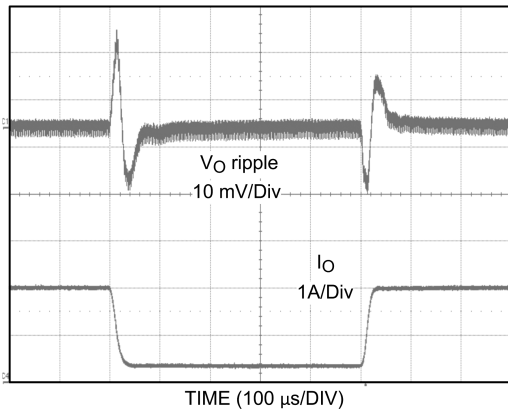


30167732



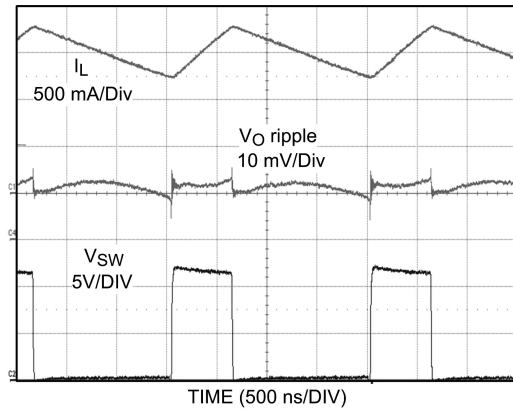
30167733

Load Transient Waveforms 300mA to 2A, 12V_{IN}



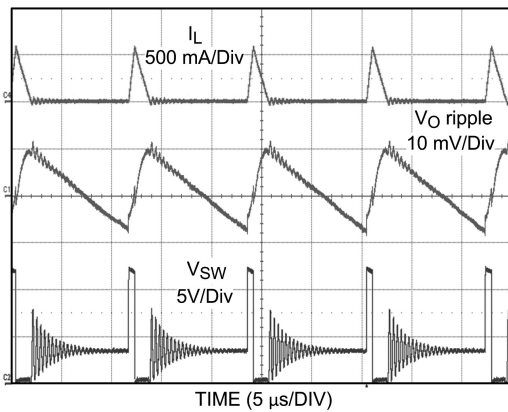
30167734

Switching Waveforms CCM, 2A, 12V_{IN}



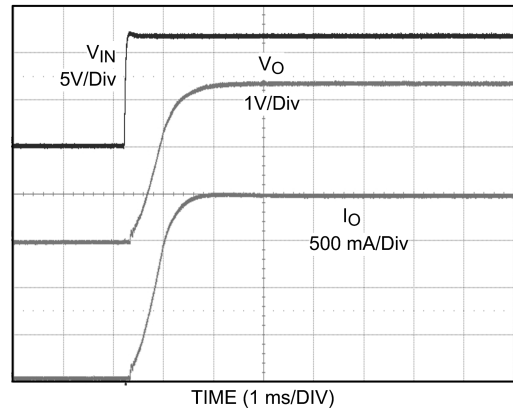
30167735

Switching Waveforms DCM, 50mA, 12V_{IN}



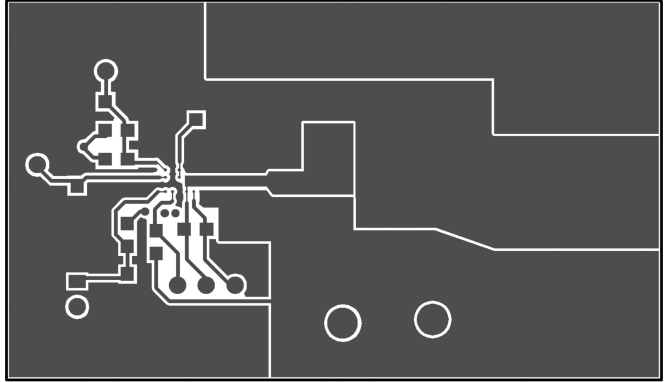
30167736

Startup Waveforms



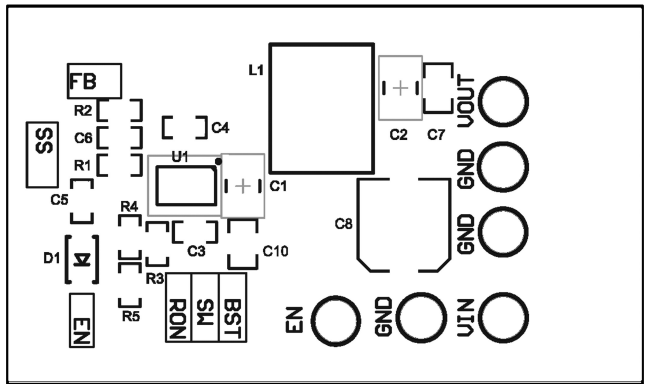
30167737

Layout



Top Layer

30167726



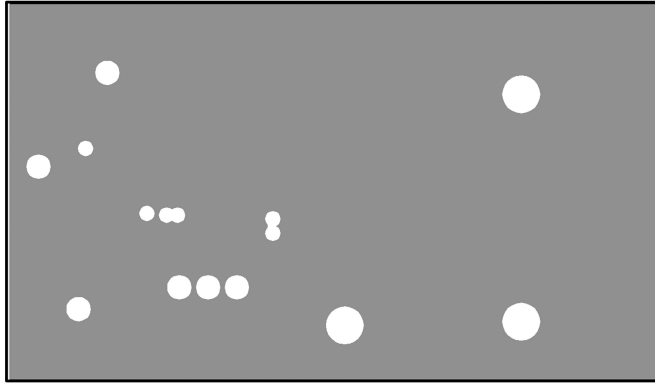
Top Silkscreen

30167730



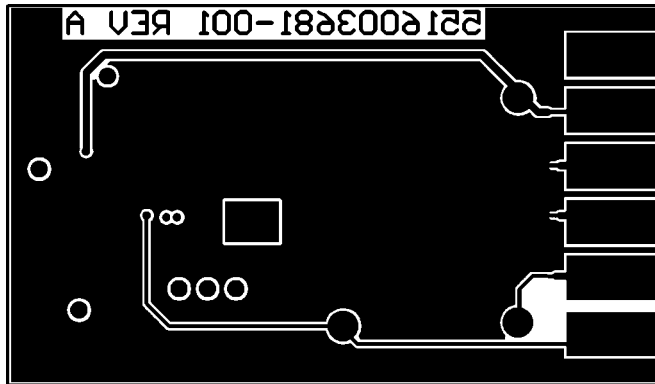
Mid Layer 1

30167727



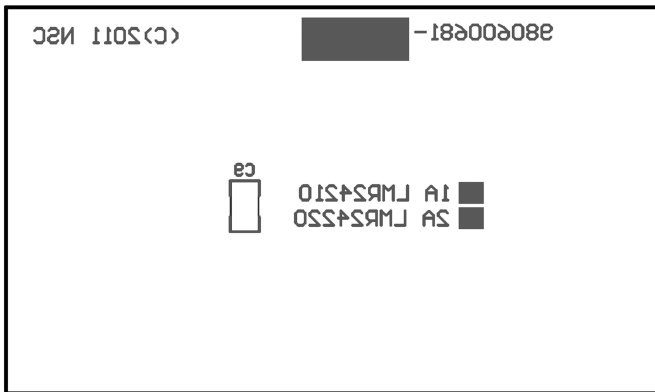
Mid Layer 2

30167728



Bottom Layer

30167729



Bottom Silkscreen

30167731

TI/NATIONAL INTERIM IMPORTANT NOTICE

Texas Instruments has purchased National Semiconductor. As of Monday, September 26th, and until further notice, products sold or advertised under the National Semiconductor name or logo, and information, support and interactions concerning such products, remain subject to the preexisting National Semiconductor standard terms and conditions of sale, terms of use of website, and Notices (and/or terms previously agreed in writing with National Semiconductor, where applicable) and are not subject to any differing terms and notices applicable to other TI components, sales or websites. To the extent information on official TI and National websites and business social networking media, etc., pertains to both TI and National-branded products, both companies' instructions, warnings and limitations in the above-referenced terms of use apply.

Following are URLs where you can obtain information on other Texas Instruments products and application solutions:

Products		Applications	
Audio	www.ti.com/audio	Communications and Telecom	www.ti.com/communications
Amplifiers	amplifier.ti.com	Computers and Peripherals	www.ti.com/computers
Data Converters	dataconverter.ti.com	Consumer Electronics	www.ti.com/consumer-apps
DLP® Products	www.dlp.com	Energy and Lighting	www.ti.com/energy
DSP	dsp.ti.com	Industrial	www.ti.com/industrial
Clocks and Timers	www.ti.com/clocks	Medical	www.ti.com/medical
Interface	interface.ti.com	Security	www.ti.com/security
Logic	logic.ti.com	Space, Avionics and Defense	www.ti.com/space-avionics-defense
Power Mgmt	power.ti.com	Transportation and Automotive	www.ti.com/automotive
Microcontrollers	microcontroller.ti.com	Video and Imaging	www.ti.com/video
RFID	www.ti-rfid.com	Wireless	www.ti.com/wireless-apps
RF/IF and ZigBee® Solutions	www.ti.com/lprf	TI E2E Community Home Page	e2e.ti.com

Mailing Address: Texas Instruments, Post Office Box 655303, Dallas, Texas 75265

Copyright© 2011 Texas Instruments Incorporated

IMPORTANT NOTICE

Texas Instruments Incorporated and its subsidiaries (TI) reserve the right to make corrections, modifications, enhancements, improvements, and other changes to its products and services at any time and to discontinue any product or service without notice. Customers should obtain the latest relevant information before placing orders and should verify that such information is current and complete. All products are sold subject to TI's terms and conditions of sale supplied at the time of order acknowledgment.

TI warrants performance of its hardware products to the specifications applicable at the time of sale in accordance with TI's standard warranty. Testing and other quality control techniques are used to the extent TI deems necessary to support this warranty. Except where mandated by government requirements, testing of all parameters of each product is not necessarily performed.

TI assumes no liability for applications assistance or customer product design. Customers are responsible for their products and applications using TI components. To minimize the risks associated with customer products and applications, customers should provide adequate design and operating safeguards.

TI does not warrant or represent that any license, either express or implied, is granted under any TI patent right, copyright, mask work right, or other TI intellectual property right relating to any combination, machine, or process in which TI products or services are used. Information published by TI regarding third-party products or services does not constitute a license from TI to use such products or services or a warranty or endorsement thereof. Use of such information may require a license from a third party under the patents or other intellectual property of the third party, or a license from TI under the patents or other intellectual property of TI.

Reproduction of TI information in TI data books or data sheets is permissible only if reproduction is without alteration and is accompanied by all associated warranties, conditions, limitations, and notices. Reproduction of this information with alteration is an unfair and deceptive business practice. TI is not responsible or liable for such altered documentation. Information of third parties may be subject to additional restrictions.

Resale of TI products or services with statements different from or beyond the parameters stated by TI for that product or service voids all express and any implied warranties for the associated TI product or service and is an unfair and deceptive business practice. TI is not responsible or liable for any such statements.

TI products are not authorized for use in safety-critical applications (such as life support) where a failure of the TI product would reasonably be expected to cause severe personal injury or death, unless officers of the parties have executed an agreement specifically governing such use. Buyers represent that they have all necessary expertise in the safety and regulatory ramifications of their applications, and acknowledge and agree that they are solely responsible for all legal, regulatory and safety-related requirements concerning their products and any use of TI products in such safety-critical applications, notwithstanding any applications-related information or support that may be provided by TI. Further, Buyers must fully indemnify TI and its representatives against any damages arising out of the use of TI products in such safety-critical applications.

TI products are neither designed nor intended for use in military/aerospace applications or environments unless the TI products are specifically designated by TI as military-grade or "enhanced plastic." Only products designated by TI as military-grade meet military specifications. Buyers acknowledge and agree that any such use of TI products which TI has not designated as military-grade is solely at the Buyer's risk, and that they are solely responsible for compliance with all legal and regulatory requirements in connection with such use.

TI products are neither designed nor intended for use in automotive applications or environments unless the specific TI products are designated by TI as compliant with ISO/TS 16949 requirements. Buyers acknowledge and agree that, if they use any non-designated products in automotive applications, TI will not be responsible for any failure to meet such requirements.

Following are URLs where you can obtain information on other Texas Instruments products and application solutions:

Products

Audio	www.ti.com/audio
Amplifiers	amplifier.ti.com
Data Converters	dataconverter.ti.com
DLP® Products	www.dlp.com
DSP	dsp.ti.com
Clocks and Timers	www.ti.com/clocks
Interface	interface.ti.com
Logic	logic.ti.com
Power Mgmt	power.ti.com
Microcontrollers	microcontroller.ti.com
RFID	www.ti-rfid.com
OMAP Mobile Processors	www.ti.com/omap
Wireless Connectivity	www.ti.com/wirelessconnectivity

Applications

Communications and Telecom	www.ti.com/communications
Computers and Peripherals	www.ti.com/computers
Consumer Electronics	www.ti.com/consumer-apps
Energy and Lighting	www.ti.com/energy
Industrial	www.ti.com/industrial
Medical	www.ti.com/medical
Security	www.ti.com/security
Space, Avionics and Defense	www.ti.com/space-avionics-defense
Transportation and Automotive	www.ti.com/automotive
Video and Imaging	www.ti.com/video

TI E2E Community Home Page

e2e.ti.com

Mailing Address: Texas Instruments, Post Office Box 655303, Dallas, Texas 75265
Copyright © 2011, Texas Instruments Incorporated