

LM21215

Application Note 2130 LM21215 Evaluation Board



Literature Number: SNVA476

LM21215 Evaluation Board

National Semiconductor
 Application Note 2130
 Michael Hartshorne
 March 29, 2011

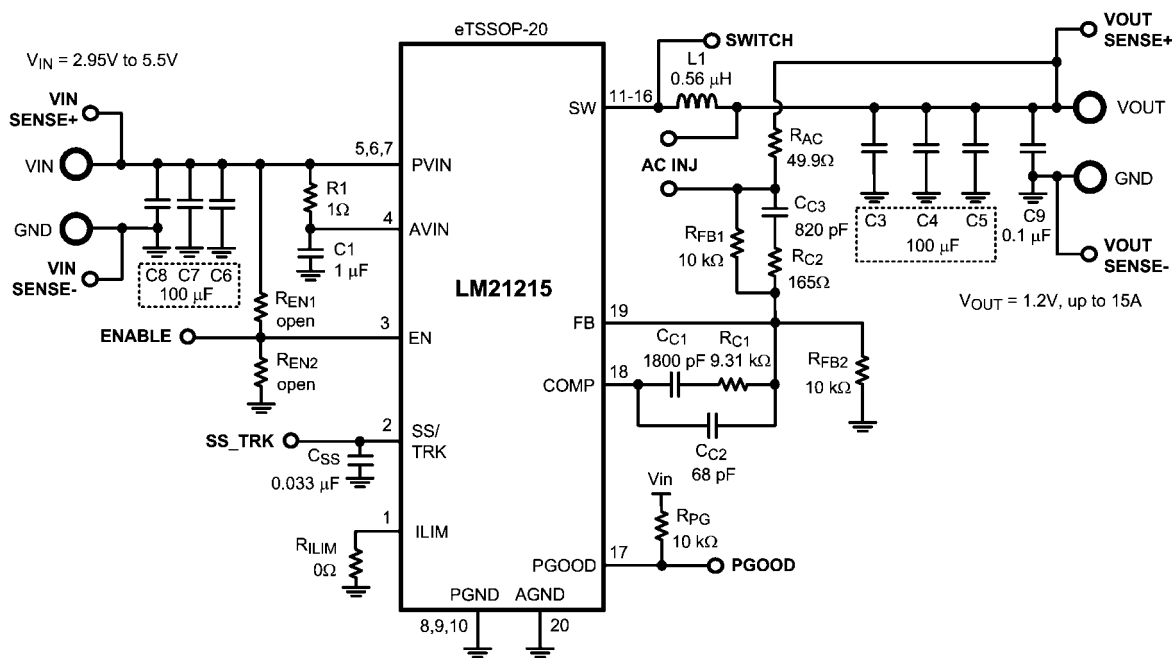


Introduction

This evaluation board provides a solution to examine the high efficiency LM21215 buck switching regulator. The LM21215 is capable of driving up to 15A of continuous load current with excellent output voltage accuracy due to its $\pm 1\%$ internal reference. The LM21215 is capable of down converting from an input voltage between 2.95V and 5.5V at a fixed switching frequency of 500 kHz. This device also features an adjustable current limit that allows the user to set the internal current limit protection value. Other fault protection features include output power good and output over-voltage protection. The dual function soft-start/tracking pin can be used to control the start-up response of the LM21215, and the precision enable pin can be used to easily sequence the LM21215 in applications with sequencing requirements.

The LM21215 evaluation board has been optimized to work from 2.95V to 5.5V, achieving a balance between overall solution size and regulator efficiency. The evaluation board measures just over 2" x 2" on a four layer PCB, and exhibits a junction-to-ambient thermal impedance (θ_{JA}) of 24°C/W with no air flow. The power stage and compensation components of the LM21215 evaluation board have been optimized for an input voltage of 5V, but for testing purposes, the input can be varied across the entire operating range. The output voltage of the evaluation board is nominally 1.2V, but this voltage can be easily changed to any voltage between 0.6V and V_{IN} by modifying the feedback resistor network.

Evaluation Board Schematic



30154001

Powering and Loading Considerations

Read this entire page prior to attempting to power the evaluation board.

QUICK SETUP PROCEDURE

Step 1: Set the input source current limit to 10A. Turn off the input source. Connect the positive output of the input source to V_{IN} and the negative output to the corresponding GND.

Step 2: Connect the load (with 15A capability) to V_{OUT} for the positive connection and GND for the negative connection.

Step 3: The ENABLE pin should be left open for normal operation.

Step 4: Set the input source voltage to 5V. The load voltage should be in regulation with a nominal 1.2V output.

Step 5: Slowly increase the load while monitoring the load voltage at V_{OUT} . It should remain in regulation with a nominal 1.2V output as the load is increased up to 15A.

Step 6: Slowly sweep the input source voltage from 2.95V to 5.5V. The load voltage should remain in regulation with a nominal 1.2V output. If desired, the output of the device can be disabled by connecting the ENABLE pin to GND.

POWERING UP

It is suggested that the load power be kept low during the first power up. Once the device is powered up, immediately check for 1.2V at the output.

A quick efficiency check is the best way to confirm that everything is operating properly. If something is amiss you can be reasonably sure that it will affect the efficiency adversely. Few parameters can be incorrect in a switching power supply without creating losses and potentially damaging heat.

Some voltage supplies can exhibit severe voltage overshoot during high current transients. If a supply overshoots above 6.0V, damage to the LM21215 can occur. For these supplies, a large capacitor across the terminals of the supply (1000 μ F) can alleviate this problem.

OVER CURRENT PROTECTION

The LM21215 features a resistor-programmable current limit that allows the user to set the current limit to any desired value between 4A and 20A by changing the resistor R_{ILIM} . This evaluation board allows the maximum possible current limit for the LM21215 by populating R_{ILIM} with a 0 Ω resistor. If the user desires a lower current limit, the current limit should be set above the peak inductor current under maximum load and ripple conditions to avoid a current limit event in normal operation. See [PROGRAMMABLE CURRENT LIMIT: \$R_{ILIM}\$](#) for details on how to determine the R_{ILIM} value.

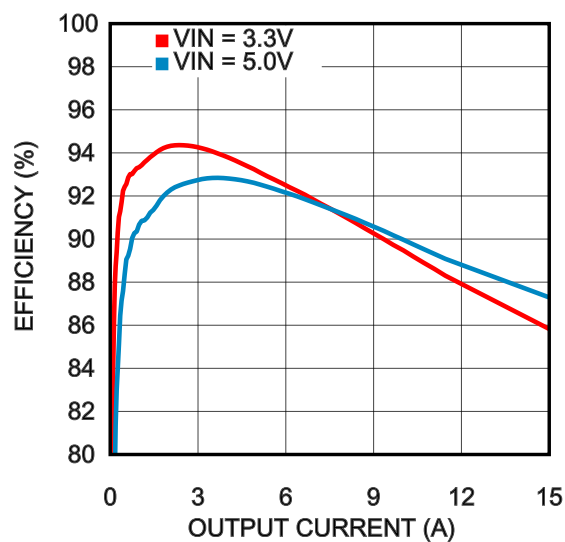
Connection Descriptions

Terminal Silkscreen	Description
VIN	This terminal is the input voltage to the device. The evaluation board will operate over the input voltage range of 2.95V to 5.5V.
GND	These terminals are the ground connections to the device. The input power ground should be connected next to the input V_{IN} connection, and the output power ground next to the V_{OUT} connection.
VOUT	This terminal connects to the output voltage of the power supply and should be connected to the load.
ENABLE	This terminal connects to the enable pin of the device. This terminal can be left floating or driven externally. If left floating, a 2 μ A current source will pull the pin high, thereby enabling the device. If driven externally, a voltage typically less than 1.2V will disable the device.
SS/TRK	This terminal provides access to the SS/TRK pin of the device. Connections to this terminal are not needed for most applications. The feedback pin of the device will track the voltage on the SS/TRK pin if it is driven with an external voltage source that is below the 0.6V reference.
PGOOD	This terminal connects to the power good output of the device. This pin is pulled up through a 10 k Ω pull-up resistor to V_{IN} .
AC INJ	This terminal block allows the user to insert an AC injection signal across a 49.9 Ω resistor for open-loop gain bode measurements. A jumper shorts out this resistor when it is not needed.
SWITCH	This terminal allows easy probing of the switch node. Do not apply any external voltage source to this pin.
VIN_SENSE+, VIN_SENSE- VOUT_SENSE+, VOUT_SENSE-	These terminals allow a sense connection on the board for accurate V_{IN} and V_{OUT} measurements, respectively.

Performance Characteristics

EFFICIENCY PLOTS

Figure 1 shows the conversion efficiency versus output current for a 5V input voltage for output voltages of 1.2V and 3.3V. The default output voltage is 1.2V.

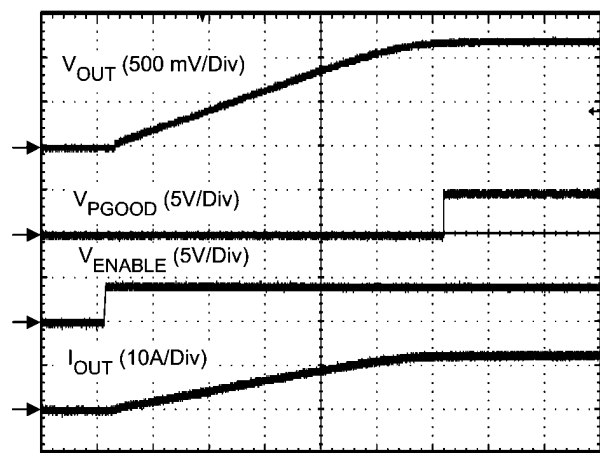


30154035

FIGURE 1. Efficiency

STARTUP WAVEFORM

A soft-start sequence occurs when applying power to the LM21215 evaluation board. Figure 2 shows the output voltage during a typical start-up sequence.

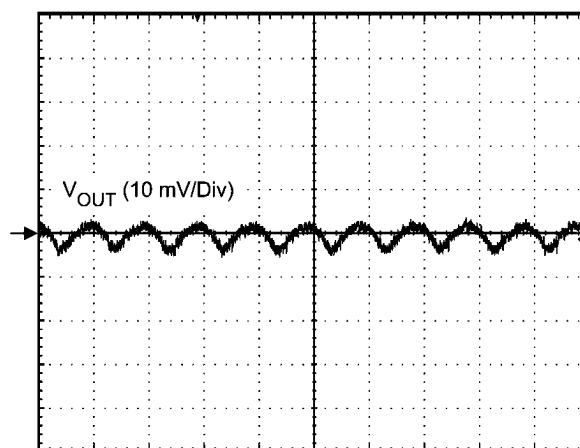


30154003

FIGURE 2. STARTUP (2 ms/DIV)

OUTPUT RIPPLE WAVEFORM

Figure 3 shows the output voltage ripple. This measurement was taken with the scope probe tip placed on the output capacitor C9 VOUT connection and the scope probe ground "barrel" wired to the GND connection of C9. The scope bandwidth is set to 20 MHz.

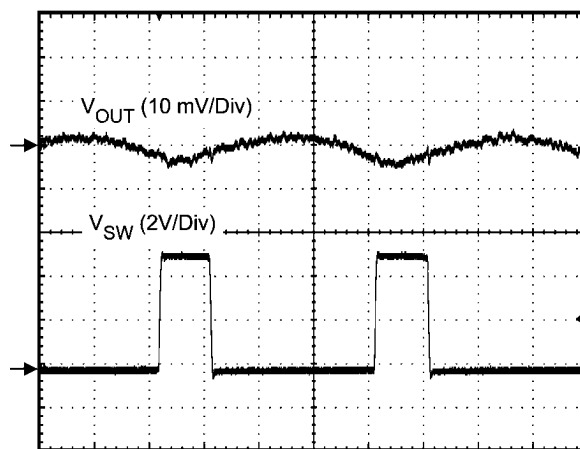


30154004

FIGURE 3. OUTPUT RIPPLE (2 μ s/DIV)

PRIMARY SWITCHNODE WAVEFORM

Figure 4 shows the typical SW pin voltage with the output current set to 10A.

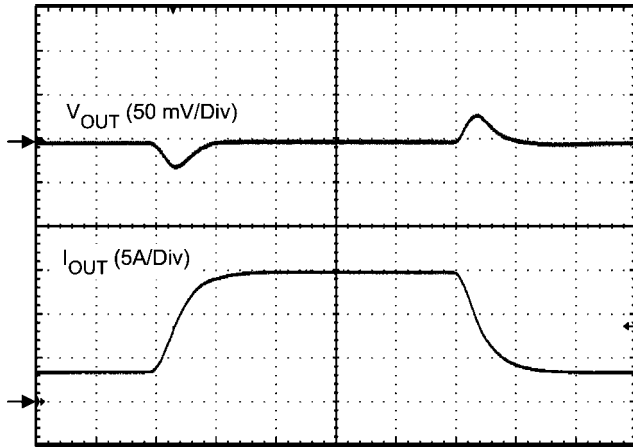


30154005

FIGURE 4. OUTPUT RIPPLE (400 ns/DIV)

OUTPUT TRANSIENT RESPONSE

Figure 5 shows the V_{OUT} deviation for a 3A to 12A output current transient condition.

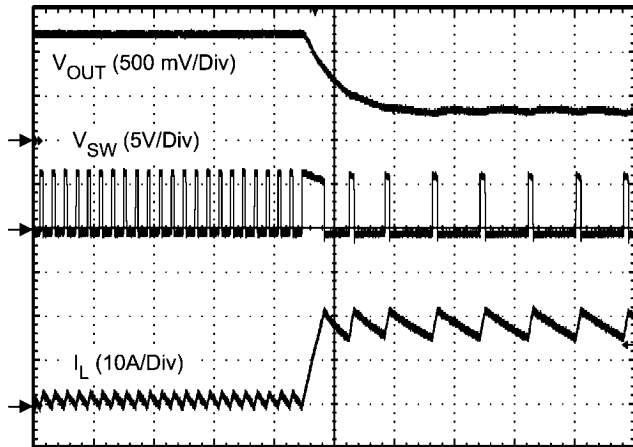


30154034

FIGURE 5. V_{OUT} TRANSIENT RESPONSE (50 μ s/DIV)

OUTPUT CURRENT LIMIT

Figure 6 shows the V_{OUT} output response to an output current limit condition.

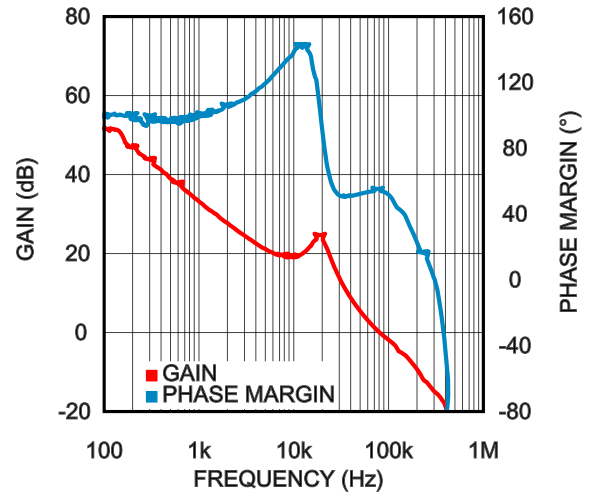


30154041

FIGURE 6. CURRENT LIMIT (10 μ s/DIV)

OPEN LOOP BODE RESPONSE

Figure 7 shows the open loop bode response generated by inserting a stimulus signal across R_{AC} and using a network analyzer to plot the gain and phase.



30154042

FIGURE 7. OPEN LOOP BODE RESPONSE

Bill of Materials

The Bill of Materials is shown below, including the manufacturer and part number.

ID	DESCRIPTION	VENDOR	PART NUMBER	QUANTITY
AC INJ	Header, TH, 100mil, 2x1, Gold plated, 230 mil above insulator	Samtec Inc.	TSW-102-07-G-S	1
C1	CAP, CERM, 1 uF, 10V, +/-10%, X7R, 0603	MuRata	GRM188R71A105KA61D	1
C3, C4, C5, C6, C7, C8	CAP, CERM, 100 uF, 6.3V, +/-20%, X5R, 1206	MuRata	GRM31CR60J107ME39L	6
C9	CAP, CERM, 0.1 uF, 50V, +/-10%, X7R, 0603	TDK	C1608X7R1H104K	1
C _{C1}	CAP, CERM, 1800 pF, 50V, +/-5%, C0G/NP0, 0603	MuRata	C1608C0G1H182J	1
C _{C2}	CAP, CERM, 68 pF, 50V, +/-5%, C0G/NP0, 0603	MuRata	GRM1885C1H680JA01D	1
C _{C3}	CAP, CERM, 820 pF, 50V, +/-5%, C0G/NP0, 0603	MuRata	GRM1885C1H821JA01D	1
C _{SS}	CAP, CERM, 0.033 uF, 16V, +/-10%, X7R, 0603	MuRata	GRM188R71C333KA01D	1
GND_FI, GND_FO, VIN_F, VOUT_F	Standard Banana Jack, Uninsulated, 15A	Johnson Components	108-0740-001	4
L1	Inductor, Shielded Drum Core, Powdered Iron, 560nH, 27.5A, 0.0018 ohm, SMD	Vishay-Dale	IHLP4040DZERR56M01	1
R1	RES, 1.0 ohm, 5%, 0.1W, 0603	Vishay-Dale	CRCW06031R00JNEA	1
R _{AC}	RES, 49.9 ohm, 1%, 0.1W, 0603	Vishay-Dale	CRCW060349R9FKEA	1
R _{C1}	RES, 9.31 kohm, 1%, 0.1W, 0603	Vishay-Dale	CRCW06039K31FKEA	1
R _{C2}	RES, 165 ohm, 1%, 0.1W, 0603	Vishay-Dale	CRCW0603165RFKEA	1
R _{FB1} , R _{FB2} , R _{PG}	RES, 10 kohm, 1%, 0.1W, 0603	Vishay-Dale	CRCW060310K0FKEA	3
R _{ILIM}	RES, 0 ohm, 1%, 0.1W, 0603	Vishay-Dale	CRCW06030000Z0EA	1
SH-J1	Shunt, 100mil, Gold plated, Black	Samtec Inc.	SNT-100-BK-G	1
U1	15A Buck DC/DC Converter	National Semiconductor	LM21215MH	1

Component Selection

This section provides a walk-through of the design process of the LM21215 evaluation board. Unless otherwise indicated all equations assume units of amps (A) for current, farads (F) for capacitance, henries (H) for inductance, and volts (V) for voltages.

INPUT CAPACITORS: C1, C2, C3

The required RMS current rating of the input capacitor for a buck regulator can be estimated by the following equation:

$$I_{CIN(RMS)} = I_{OUT} \sqrt{D(1-D)}$$

The variable D refers to the duty cycle, and can be approximated by:

$$D = \frac{V_{OUT}}{V_{IN}}$$

From this equation, it follows that the maximum $I_{CIN(RMS)}$ requirement will occur at a full 15A load current with the system operating at 50% duty cycle. Under this condition, the maximum $I_{CIN(RMS)}$ is given by:

$$I_{CIN(RMS)} = 15A \sqrt{0.5 \times 0.5} = 7.5A$$

Ceramic capacitors feature a very large I_{RMS} rating in a small footprint, making a ceramic capacitor ideal for this application.

The input capacitors also keep the input stable during load transient conditions. If the input capacitance is too low, the input can drop below the UVLO threshold and cause the device to disable the output. This may result in repetitive dropout and re-enable oscillation, or "motorboating". To give the user the ability to operate with a low V_{IN} voltage, three 100 μ F ceramic capacitors were used on the input.

INDUCTOR: L1

The value of the inductor was selected to allow the device to achieve a 5V to 1.2V conversion at 500kHz to provide a peak to peak ripple current of 3.2A, which is about 21% of the maximum output current. To have an optimized design, generally the peak to peak inductor ripple current should be kept to within 20% to 40% of the rated output current for a given input voltage, output voltage and operating frequency. The peak to peak inductor ripple current can be calculated by the equation:

$$\Delta I_{P-P} = \frac{(V_{IN} - V_{OUT}) \times D}{L \times f_{SW}}$$

Once an inductance value is calculated, an actual inductor needs to be selected based on a trade-off between physical size, efficiency, and current carrying capability. For the LM21215 evaluation board, a Vishay IHLP4040DZER-R56M01 inductor offers a good balance between efficiency (1.8 m Ω DCR) and size.

OUTPUT CAPACITOR: C3, C4, C5, C9

The value of the output capacitor in a buck regulator influences the voltage ripple that will be present on the output voltage as well as the large signal output voltage response to a load transient. Given the peak-to-peak inductor current rip-

ple (ΔI_{P-P}) the output voltage ripple can be approximated by the equation:

$$\Delta V_{OUT} = \Delta I_{P-P} \times \left[R_{ESR} + \frac{1}{8 \times f_{SW} \times C_{OUT}} \right]$$

The variable R_{ESR} above refers to the ESR of the output capacitor. As can be seen in the above equation, the ripple voltage on the output can be divided into two parts, one of which is attributed to the AC ripple current flowing through the ESR of the output capacitor and another due to the AC ripple current actually charging and discharging the output capacitor. The output capacitor also has an effect on the amount of droop that is seen on the output voltage in response to a load transient event.

For the evaluation board, three 100 μ F ceramic capacitors were selected to provide good transient and DC performance. Ceramic capacitors give the lowest R_{ESR} of any standard capacitor chemistries, resulting in the lowest output ripple for the given ripple current. Ceramic capacitors (especially high capacitance, small package multi-layer types, or MLCC) lose their capacitance as the DC voltage is increased. For this configuration, the actual capacitance value was approximated to be 50 μ F per capacitor, or 150 μ F total. This is lower than measured capacitance values for 1.2V, but will allow the user to change the output voltage up to 3.3V and maintain stability.

SOFT-START CAPACITOR: C_{SS}

A soft-start capacitor can be used to control the startup time of the LM21215 voltage regulator. The startup time of the regulator when using a soft-start capacitor can be estimated by the following equation:

$$t_{SS} = \frac{0.6V \times C_{SS}}{I_{SS}}$$

For the LM21215, I_{SS} is nominally 5 μ A. For the evaluation board, the soft-start time has been designed to be roughly 10 ms, resulting in a C_{SS} capacitor value of 33 nF.

COMPENSATION COMPONENTS: C_{C1}, C_{C2}, C_{C3}, R_{C1}, R_{C2}

These components are used in conjunction with the error amplifier to create a type 3 voltage-mode compensation network. The analysis of type 3 compensation is outside the scope of this document, but an example of the step-by-step procedure to generate compensation component values is given. The parameters needed for the compensation values are given in the table below.

Parameter	Value
V_{IN}	5.0V
V_{OUT}	1.2V
I_{OUT}	15A
$f_{CROSSOVER}$	100 kHz
L	0.56 μ H
R_{DCR}	1.8 m Ω
C_O	150 μ F
R_{ESR}	1.0 m Ω
ΔV_{RAMP}	0.8V
f_{SW}	500 kHz

where ΔV_{RAMP} is the oscillator peak-to-peak ramp voltage (nominally 0.8 V), $f_{\text{CROSSOVER}}$ is the frequency at which the open-loop gain is a magnitude of 1, R_{DCR} is the effective DC resistance of the inductor, R_{ESR} is the effective resistance of the output capacitor, and C_{O} is the effective output capacitance at the programmed output voltage. It is recommended that $f_{\text{CROSSOVER}}$ not exceed one-fifth of the switching frequency. The output capacitance, C_{O} , depends on capacitor chemistry and bias voltage. For Multi-Layer Ceramic Capacitors (MLCC), the total capacitance will degrade as the DC bias voltage is increased. Measuring the actual capacitance value for the output capacitors at the output voltage is recommended to accurately calculate the compensation network. Note that it is more conservative, from a stability standpoint, to err on the side of a smaller output capacitance value in the compensation calculations rather than a larger, as this will result in a lower bandwidth but increased phase margin.

First, the value of R_{FB1} should be chosen. A typical value is 10k Ω . From this, the value of R_{C1} can be calculated to set the mid-band gain so that the desired crossover frequency is achieved.

$$\begin{aligned} R_{\text{C1}} &= \frac{f_{\text{CROSSOVER}}}{f_{\text{LC}}} \cdot \frac{\Delta V_{\text{RAMP}}}{V_{\text{IN}}} \cdot R_{\text{FB1}} \\ &= \frac{100 \text{ kHz}}{17.4 \text{ kHz}} \cdot \frac{0.8 \text{ V}}{5.0 \text{ V}} \cdot 10 \text{ k}\Omega \\ &= 9.2 \text{ k}\Omega \end{aligned}$$

Next, the value of C_{C1} can be calculated by placing a zero at half of the LC double pole frequency.

$$\begin{aligned} C_{\text{C1}} &= \frac{1}{\pi f_{\text{LC}} R_{\text{C1}}} \\ &= 1.99 \text{ nF} \end{aligned}$$

Now the value of C_{C2} can be calculated to place a pole at half of the switching frequency.

$$\begin{aligned} C_{\text{C2}} &= \frac{C_{\text{C1}}}{\pi f_{\text{SW}} R_{\text{C1}} C_{\text{C1}} - 1} \\ &= 71 \text{ pF} \end{aligned}$$

R_{C2} can then be calculated to set the second zero at the LC double pole frequency.

$$\begin{aligned} R_{\text{C2}} &= \frac{R_{\text{FB1}} f_{\text{LC}}}{f_{\text{ESR}} - f_{\text{LC}}} \\ &= 166 \Omega \end{aligned}$$

Last, C_{C3} can be calculated to place a pole at the same frequency as the zero created by the output capacitor ESR.

$$\begin{aligned} C_{\text{C3}} &= \frac{1}{2\pi f_{\text{ESR}} R_{\text{C2}}} \\ &= 898 \text{ pF} \end{aligned}$$

The standard values used for the above calculations are given in the Bill of Materials.

FEEDBACK RESISTORS: R_{FB1} , R_{FB2} , and R_{AC}

The resistors labeled R_{FB1} and R_{FB2} create a voltage divider from V_{OUT} to the feedback pin that is used to set the output of the voltage regulator. Nominally, the output of the LM21215 evaluation board is set to 1.2V, giving resistor values of $R_{\text{FB1}} = R_{\text{FB2}} = 10\text{k}\Omega$. If a different output voltage is required, the value of R_{FB2} can be adjusted according to the equation:

$$R_{\text{FB1}} = \left(\frac{V_{\text{OUT}}}{0.6} - 1 \right) \times R_{\text{FB2}}$$

R_{FB1} does not need to be changed from its value of 10k Ω . Resistor R_{AC} has a value of 49.9 Ω and is provided as an injection point for loop stability measurements, as well as, a way to further tweak the output voltage accuracy to account for resistor tolerance values differing from ideal calculated values. The jumper is used to short out R_{AC} when not needed.

PROGRAMMABLE UVLO: R_{EN1} and R_{EN2}

The resistors labeled R_{EN1} and R_{EN2} create a voltage divider from V_{IN} to the enable pin that can be used to enable the device above a programmed V_{IN} , effectively creating a programmable UVLO voltage above the device's internal UVLO (nominally 2.7V). To allow evaluation of the device down to 2.95V, these components are not installed. To change the turn-on threshold of the device a 10 k Ω resistor is recommended for R_{EN1} and the value of R_{EN2} can be calculated using the equation:

$$R_{\text{EN1}} = \left(\frac{V_{\text{TO}}}{1.35} - 1 \right) \times R_{\text{EN2}}$$

where V_{TO} is the desired V_{IN} voltage at which the device will enable.

PROGRAMMABLE CURRENT LIMIT: R_{ILIM}

The resistor R_{ILIM} will set the internal current limit on the LM21215. A 0 Ω resistor is used on this board, allowing the maximum current capability of the device. If a user desires a lower current limit, it should be programmed such that the peak inductor current (I_{L}) does not trigger the current limit in normal operation. This requires setting the resistor R_{ILIM} to the appropriate value to allow the maximum ripple current plus the DC output current through the high-side FET during normal operation. The maximum ripple current can be described as:

$$\text{FOR } D > 0.5 \\ \Delta I_{\text{LMAX}} = \frac{(V_{\text{INMAX}} - V_{\text{OUTMIN}}) \cdot V_{\text{OUTMIN}}}{L_{\text{MIN}} \cdot f_{\text{SWMIN}} \cdot V_{\text{INMAX}}}$$

$$\text{FOR } D < 0.5 \\ \Delta I_{\text{LMAX}} = \frac{(V_{\text{INMIN}} - V_{\text{OUTMAX}}) \cdot V_{\text{OUTMAX}}}{L_{\text{MIN}} \cdot f_{\text{SWMIN}} \cdot V_{\text{INMIN}}}$$

where V_{INMAX} , V_{INMIN} , V_{OUTMAX} , V_{OUTMIN} , L_{MIN} and F_{SWMIN} are the respective maximum and minimum conditions of the system as defined by the component tolerance and device variation. From this, the maximum allowable current through the high-side FET (I_{HSMAX}) of device can be described as:

$$I_{\text{HSMAX}} = \frac{\Delta I_{\text{LMAX}}}{2} + I_{\text{DCMAX}}$$

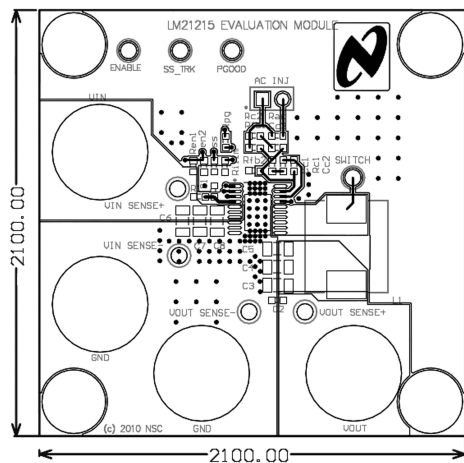
where I_{OUTMAX} is the maximum defined DC output current, up to 15 A. Once the I_{HSMAX} value has been determined, a nominal value of the R_{ILIM} resistor can be calculated as follows:

$$R_{\text{ILIM}} (\text{k}\Omega) = \frac{582.4}{I_{\text{HSMAX}}} - 14.2$$

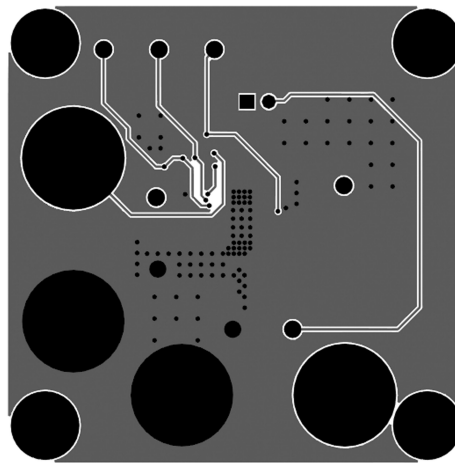
where the R_{ILIM} value is the nominal resistance necessary for the given I_{HSMAX} value. A conservative design should also take into account the device variation over V_{IN} and temperature, which can be seen in the Electrical Characteristics table for the I_{CLR} parameter and the typical performance characteristics in the LM21215 data sheet. These variations can cause the I_{HSMAX} value to increase, depending on the range of the input voltage and junction temperature.

PCB Layout

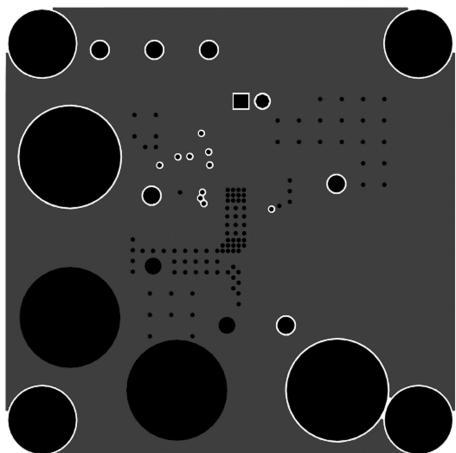
The PCB was manufactured with 2oz. copper outer layers, and 1oz. copper inner layers. Twenty 8 mil. diameter vias placed underneath the device, along with additional vias placed throughout the ground plane around the device, help improve the thermal dissipation of the board.



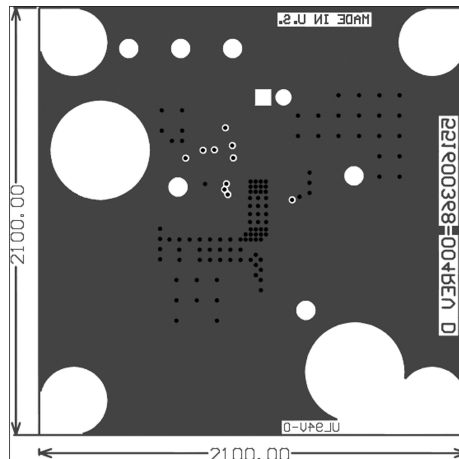
Top Layer (Copper planes outlined in grey) 30154030



Mid Layer2 30154032



Mid Layer1 30154031



Bottom Layer 30154033

For more National Semiconductor product information and proven design tools, visit the following Web sites at:
www.national.com

Products		Design Support	
Amplifiers	www.national.com/amplifiers	WEBENCH® Tools	www.national.com/webench
Audio	www.national.com/audio	App Notes	www.national.com/appnotes
Clock and Timing	www.national.com/timing	Reference Designs	www.national.com/refdesigns
Data Converters	www.national.com/adc	Samples	www.national.com/samples
Interface	www.national.com/interface	Eval Boards	www.national.com/evalboards
LVDS	www.national.com/lvds	Packaging	www.national.com/packaging
Power Management	www.national.com/power	Green Compliance	www.national.com/quality/green
Switching Regulators	www.national.com/switchers	Distributors	www.national.com/contacts
LDOs	www.national.com/ldo	Quality and Reliability	www.national.com/quality
LED Lighting	www.national.com/led	Feedback/Support	www.national.com/feedback
Voltage References	www.national.com/vref	Design Made Easy	www.national.com/easy
PowerWise® Solutions	www.national.com/powerwise	Applications & Markets	www.national.com/solutions
Serial Digital Interface (SDI)	www.national.com/sdi	Mil/Aero	www.national.com/milaero
Temperature Sensors	www.national.com/tempensors	SolarMagic™	www.national.com/solarmagic
PLL/VCO	www.national.com/wireless	PowerWise® Design University	www.national.com/training

THE CONTENTS OF THIS DOCUMENT ARE PROVIDED IN CONNECTION WITH NATIONAL SEMICONDUCTOR CORPORATION ("NATIONAL") PRODUCTS. NATIONAL MAKES NO REPRESENTATIONS OR WARRANTIES WITH RESPECT TO THE ACCURACY OR COMPLETENESS OF THE CONTENTS OF THIS PUBLICATION AND RESERVES THE RIGHT TO MAKE CHANGES TO SPECIFICATIONS AND PRODUCT DESCRIPTIONS AT ANY TIME WITHOUT NOTICE. NO LICENSE, WHETHER EXPRESS, IMPLIED, ARISING BY ESTOPPEL OR OTHERWISE, TO ANY INTELLECTUAL PROPERTY RIGHTS IS GRANTED BY THIS DOCUMENT.

TESTING AND OTHER QUALITY CONTROLS ARE USED TO THE EXTENT NATIONAL DEEMS NECESSARY TO SUPPORT NATIONAL'S PRODUCT WARRANTY. EXCEPT WHERE MANDATED BY GOVERNMENT REQUIREMENTS, TESTING OF ALL PARAMETERS OF EACH PRODUCT IS NOT NECESSARILY PERFORMED. NATIONAL ASSUMES NO LIABILITY FOR APPLICATIONS ASSISTANCE OR BUYER PRODUCT DESIGN. BUYERS ARE RESPONSIBLE FOR THEIR PRODUCTS AND APPLICATIONS USING NATIONAL COMPONENTS. PRIOR TO USING OR DISTRIBUTING ANY PRODUCTS THAT INCLUDE NATIONAL COMPONENTS, BUYERS SHOULD PROVIDE ADEQUATE DESIGN, TESTING AND OPERATING SAFEGUARDS.

EXCEPT AS PROVIDED IN NATIONAL'S TERMS AND CONDITIONS OF SALE FOR SUCH PRODUCTS, NATIONAL ASSUMES NO LIABILITY WHATSOEVER, AND NATIONAL DISCLAIMS ANY EXPRESS OR IMPLIED WARRANTY RELATING TO THE SALE AND/OR USE OF NATIONAL PRODUCTS INCLUDING LIABILITY OR WARRANTIES RELATING TO FITNESS FOR A PARTICULAR PURPOSE, MERCHANTABILITY, OR INFRINGEMENT OF ANY PATENT, COPYRIGHT OR OTHER INTELLECTUAL PROPERTY RIGHT.

LIFE SUPPORT POLICY

NATIONAL'S PRODUCTS ARE NOT AUTHORIZED FOR USE AS CRITICAL COMPONENTS IN LIFE SUPPORT DEVICES OR SYSTEMS WITHOUT THE EXPRESS PRIOR WRITTEN APPROVAL OF THE CHIEF EXECUTIVE OFFICER AND GENERAL COUNSEL OF NATIONAL SEMICONDUCTOR CORPORATION. As used herein:

Life support devices or systems are devices which (a) are intended for surgical implant into the body, or (b) support or sustain life and whose failure to perform when properly used in accordance with instructions for use provided in the labeling can be reasonably expected to result in a significant injury to the user. A critical component is any component in a life support device or system whose failure to perform can be reasonably expected to cause the failure of the life support device or system or to affect its safety or effectiveness.

National Semiconductor and the National Semiconductor logo are registered trademarks of National Semiconductor Corporation. All other brand or product names may be trademarks or registered trademarks of their respective holders.

Copyright© 2010 National Semiconductor Corporation

For the most current product information visit us at www.national.com



National Semiconductor
Americas Technical
Support Center
 Email: support@nsc.com
 Tel: 1-800-272-9959

National Semiconductor Europe
Technical Support Center
 Email: europe.support@nsc.com

National Semiconductor Asia
Pacific Technical Support Center
 Email: ap.support@nsc.com

National Semiconductor Japan
Technical Support Center
 Email: jpn.feedback@nsc.com

IMPORTANT NOTICE

Texas Instruments Incorporated and its subsidiaries (TI) reserve the right to make corrections, modifications, enhancements, improvements, and other changes to its products and services at any time and to discontinue any product or service without notice. Customers should obtain the latest relevant information before placing orders and should verify that such information is current and complete. All products are sold subject to TI's terms and conditions of sale supplied at the time of order acknowledgment.

TI warrants performance of its hardware products to the specifications applicable at the time of sale in accordance with TI's standard warranty. Testing and other quality control techniques are used to the extent TI deems necessary to support this warranty. Except where mandated by government requirements, testing of all parameters of each product is not necessarily performed.

TI assumes no liability for applications assistance or customer product design. Customers are responsible for their products and applications using TI components. To minimize the risks associated with customer products and applications, customers should provide adequate design and operating safeguards.

TI does not warrant or represent that any license, either express or implied, is granted under any TI patent right, copyright, mask work right, or other TI intellectual property right relating to any combination, machine, or process in which TI products or services are used. Information published by TI regarding third-party products or services does not constitute a license from TI to use such products or services or a warranty or endorsement thereof. Use of such information may require a license from a third party under the patents or other intellectual property of the third party, or a license from TI under the patents or other intellectual property of TI.

Reproduction of TI information in TI data books or data sheets is permissible only if reproduction is without alteration and is accompanied by all associated warranties, conditions, limitations, and notices. Reproduction of this information with alteration is an unfair and deceptive business practice. TI is not responsible or liable for such altered documentation. Information of third parties may be subject to additional restrictions.

Resale of TI products or services with statements different from or beyond the parameters stated by TI for that product or service voids all express and any implied warranties for the associated TI product or service and is an unfair and deceptive business practice. TI is not responsible or liable for any such statements.

TI products are not authorized for use in safety-critical applications (such as life support) where a failure of the TI product would reasonably be expected to cause severe personal injury or death, unless officers of the parties have executed an agreement specifically governing such use. Buyers represent that they have all necessary expertise in the safety and regulatory ramifications of their applications, and acknowledge and agree that they are solely responsible for all legal, regulatory and safety-related requirements concerning their products and any use of TI products in such safety-critical applications, notwithstanding any applications-related information or support that may be provided by TI. Further, Buyers must fully indemnify TI and its representatives against any damages arising out of the use of TI products in such safety-critical applications.

TI products are neither designed nor intended for use in military/aerospace applications or environments unless the TI products are specifically designated by TI as military-grade or "enhanced plastic." Only products designated by TI as military-grade meet military specifications. Buyers acknowledge and agree that any such use of TI products which TI has not designated as military-grade is solely at the Buyer's risk, and that they are solely responsible for compliance with all legal and regulatory requirements in connection with such use.

TI products are neither designed nor intended for use in automotive applications or environments unless the specific TI products are designated by TI as compliant with ISO/TS 16949 requirements. Buyers acknowledge and agree that, if they use any non-designated products in automotive applications, TI will not be responsible for any failure to meet such requirements.

Following are URLs where you can obtain information on other Texas Instruments products and application solutions:

Products

Audio	www.ti.com/audio
Amplifiers	amplifier.ti.com
Data Converters	dataconverter.ti.com
DLP® Products	www.dlp.com
DSP	dsp.ti.com
Clocks and Timers	www.ti.com/clocks
Interface	interface.ti.com
Logic	logic.ti.com
Power Mgmt	power.ti.com
Microcontrollers	microcontroller.ti.com
RFID	www.ti-rfid.com
OMAP Mobile Processors	www.ti.com/omap
Wireless Connectivity	www.ti.com/wirelessconnectivity

Applications

Communications and Telecom	www.ti.com/communications
Computers and Peripherals	www.ti.com/computers
Consumer Electronics	www.ti.com/consumer-apps
Energy and Lighting	www.ti.com/energy
Industrial	www.ti.com/industrial
Medical	www.ti.com/medical
Security	www.ti.com/security
Space, Avionics and Defense	www.ti.com/space-avionics-defense
Transportation and Automotive	www.ti.com/automotive
Video and Imaging	www.ti.com/video

TI E2E Community Home Page

e2e.ti.com

Mailing Address: Texas Instruments, Post Office Box 655303, Dallas, Texas 75265
Copyright © 2011, Texas Instruments Incorporated