

Using the TPS40077EVM-001 12-V Input, 1.8-V Output, 10-A Synchronous Buck Converter

The TPS40077EVM-001 evaluation module (EVM) is a synchronous buck converter providing a fixed 1.8-V output at up to 10 A from a 12-V input bus. The EVM is designed to start up from a single supply; no additional bias voltage is required for start-up. The TPS40077 Reduced Pin Count Synchronous Buck Controller used in the EVM employs predictive gate drive. This feature provides improved efficiency by eliminating shoot-through switching current, and minimizing the reverse-conduction time of the synchronous rectifier FET.

Contents

1	Introduction	2
2	TPS40077EVM-001 Electrical Performance Specifications	3
3	Schematic.....	4
4	TPS40077EVM Typical Performance Data and Characteristic Curves.....	8
5	EVM Assembly Drawings and Layout	12
6	List of Materials.....	14

List of Figures

1	TPS40077EVM-001 Schematic.....	4
2	Output Ripple Measurement – Tip and Barrel Using TP9 and TP10	6
3	TPS40077EVM-001 Recommended Test Set-Up	7
4	Control Loop Measurement Setup.....	7
5	TPS40077EVM-001 Efficiency	8
6	TPS40077EVM-001 Line and Load Regulation.....	9
7	TPS40077EVM-001 Typical Output Ripple.....	9
8	Load Transient, 2 A to 10 A	10
9	Load Transient, 10 A to 2 A.....	10
10	Typical Bode Plot.....	11
11	TPS40077EVM-001 Component Placement (Viewed from Top)	12
12	TPS40077EVM-001 Top Copper (Viewed from Top).....	13
13	TPS40077EVM-001 Bottom Copper (X-Ray View from Top)	13

List of Tables

1	TPS40077EVM-001 Electrical and Performance Specifications.....	3
2	Adjusting V_{OUT} With R3	5
3	Bill of Materials	14

1 Introduction

1.1 Description

TPS40077EVM-001 is designed to use a 12-V (8 V-to-16 V) bus to produce a high current, regulated 1.8-V output at up to 10 A of load current. The TPS40077EVM-001 demonstrates the use of the TPS40077 in a typical 12-V bus to low-voltage application, while providing a number of test points to evaluate the performance of the TPS40077. The EVM can be modified to support output voltages from 0.9 V to 3.3 V by changing a single resistor.

1.2 Applications

- Non-isolated, medium-current point-of-load and low-voltage bus converters.
- Networking equipment
- Telecommunications equipment
- DC-power distributed systems

1.3 Features

- 8 V–16 V input range
- 1.8-V fixed output, adjustable with single resistor
- 10-A DC steady-state output current
- 300-kHz switching frequency
- Single main switch N-channel MOSFET and single synchronous rectifier N-channel MOSFET
- Double-sided PCB with all components on top side
- Active converter uses less than 2.4 square inches – 1.0" × 2.4"
- Convenient test points for probing critical waveforms and non-invasive loop response testing

2 TPS40077EVM-001 Electrical Performance Specifications

Table 1. TPS40077EVM-001 Electrical and Performance Specifications

PARAMETER		NOTES AND CONDITIONS	MIN	NOM	MAX	UNITS
INPUT CHARACTERISTICS						
V_{IN}	Input voltage		8	12	16	V
I_{IN}	Input current	$V_{IN} = \text{nom}$, $I_{OUT} = \text{max}$		1.7	1.8	A
	No-load input current	$V_{IN} = \text{nom}$, $I_{OUT} = 0A$		80	100	mA
V_{IN_UVLO}	Input UVLO	$I_{OUT} = \text{min to max}$	5.4	6	6.6	V
V_{IN_ONV}	Input ONV	$I_{OUT} = \text{min to max}$	6.3	7	7.7	V
OUTPUT CHARACTERISTICS						
V_{OUT}	Output voltage	$V_{IN} = \text{nom}$, $I_{OUT} = \text{nom}$	1.75	1.8	1.85	V
	Line regulation	$V_{IN} = \text{min to max}$, $I_{OUT} = \text{nom}$			0.5%	
	Load regulation	$V_{IN} = \text{nom}$, $I_{OUT} = \text{min to max}$			0.5%	
	Output ripple voltage	V_{OUT_ripple} $V_{IN} = \text{nom}$, $I_{OUT} = \text{max}$			40	mVpp
	Output current	I_{OUT} $V_{IN} = \text{min to max}$	0	5	10	A
	Output overcurrent inception point	I_{OCP} $V_{IN} = \text{nom}$, $V_{OUT} = V_{OUT} - 5\%$	12.25	19.4	34	A
	Transient response					
ΔI	Load step	I_{OUT_max} to $0.2 \times I_{OUT_max}$		8		A
	Load slew rate			1		A/ μsec
	Overshoot			300		mV
	Settling time			0.1		msec
SYSTEMS CHARACTERISTICS						
f_{SW}	Switching frequency		240	300	360	kHz
η_{pk}	Peak efficiency	$V_{IN} = \text{nom}$, $I_{OUT} = \text{min to max}$		90%		
η	Full-load efficiency	$V_{IN} = \text{nom}$, $I_{OUT} = \text{max}$		89%		
Top	Operating temperature range	$V_{IN} = \text{min to max}$, $I_{OUT} = \text{min to max}$	-40	25	85	$^{\circ}\text{C}$
MECHANICAL CHARACTERISTICS						
W	Dimensions (active area)	Width		1		ins
L		Length		2.4		ins
h		Component height		0.41		ins
NOTE 1: Voltage accuracy effected by resistor tolerance.						

Schematic

3 Schematic

For Reference Only, See [Table 3](#): Bill of Materials for Specific Values

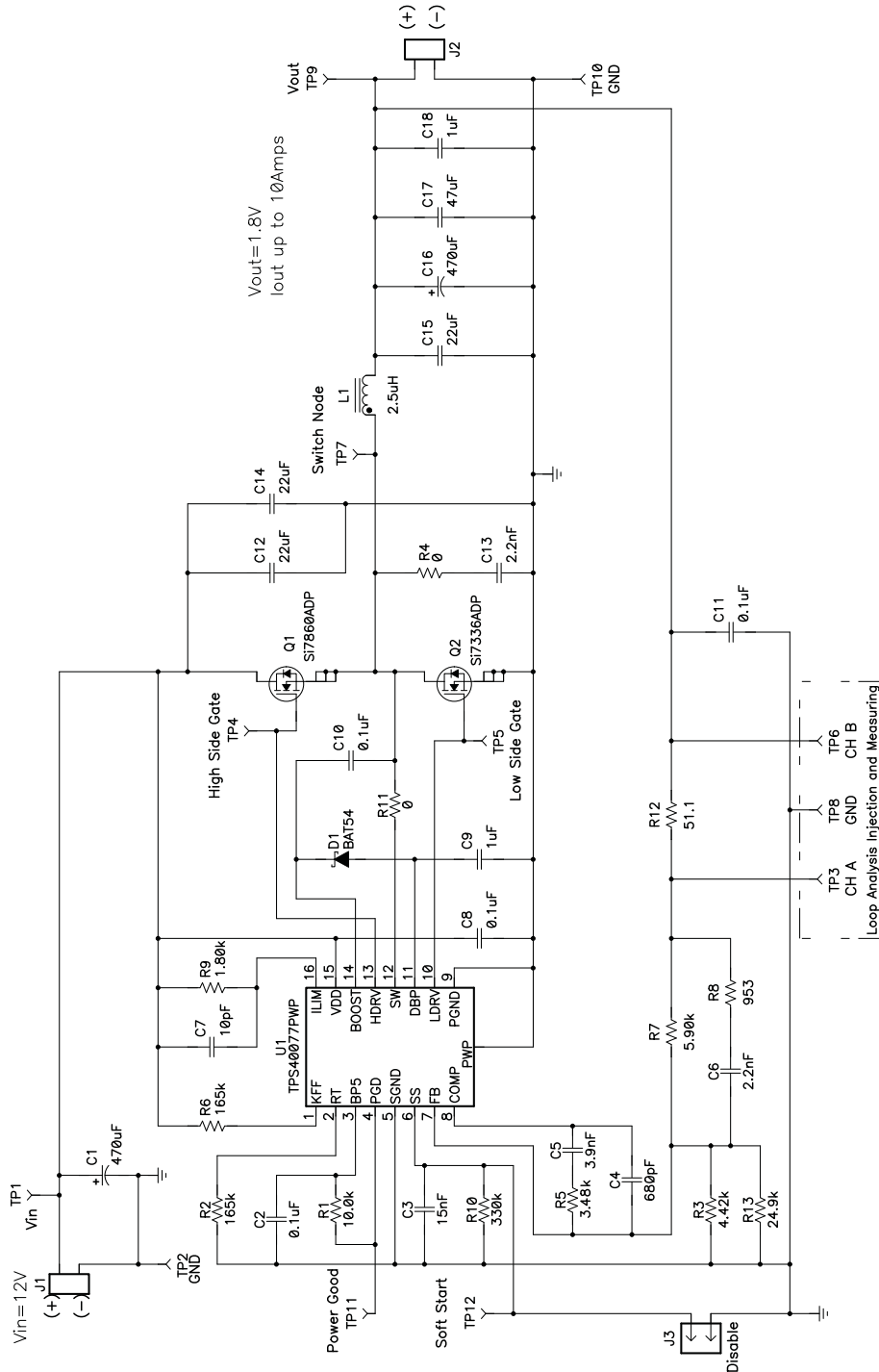


Figure 1. TPS40077EVM-001 Schematic

3.1 Adjusting Output Voltage (R3 & R13)

The regulated output voltage can be adjusted within a limited range by changing the ground resistors in the feedback resistor-divider (R3, R13).

Table 2 contains common values for R3 and R13 to generate popular output voltages.

TPS40077EVM-001 is stable through these output voltages but the efficiency may suffer as the power stage is optimized for the 1.8 V output.

Table 2. Adjusting V_{OUT} With R3

V_{OUT}	R3	R13
1.2 V	9.53 k Ω	62.0 k Ω
1.5 V	5.36 k Ω	140 k Ω
1.8 V	4.42 k Ω	24.9 k Ω
2.5 V	2.37 k Ω	71.5 k Ω
3.3 V	1.60 k Ω	220 k Ω

3.2 Disable (J3)

The TPS40077EVM-001 provides a Disable input (J3) that allows the user to evaluate the TPS40077's Enable/Disable Function. When a short is applied across the pins of J3 the TPS40077 controller is disabled and the EVM shuts down. When the TPS40077 is disabled, both FET Drivers are off.

3.3 Test Set Up

3.3.1 Equipment

3.3.1.1 Voltage Source

V_{12V_IN}
 The input voltage source (V_{12V_IN}) should be a 0–16 V variable-DC source capable of 5 A DC. Connect V_{12V_IN} to J1 as shown in Figure 3.

3.3.1.2 Meters

- A1: 0-5 A DC, ammeter
- V1: V_{12V_IN} , 0-16 V voltmeter
- V2: V_{1V5_OUT} 0-5 V voltmeter

3.3.1.3 Loads

LOAD1

The Output Load (LOAD1) should be a constant-current mode electronic load capable of 0-15 A DC at 1.8 V.

3.3.1.4 Oscilloscope

A digital or analog oscilloscope can be used to measure the ripple voltage on V_{OUT} . The oscilloscope should be set for 1-M Ω impedance, 20-MHz bandwidth, AC coupling, 1- μ s/division horizontal resolution, 20-mV/division vertical resolution for measuring output ripple. TP9 and TP10 can be used to measure the output ripple voltage by placing the oscilloscope probe tip through TP9 and holding the ground barrel to TP10 as shown in Figure 2. For a hands free approach, the loop in TP10 can be cut and opened to cradle the probe barrel. Using a leaded ground connection should be avoided because it induces additional noise due to its large ground-loop area.

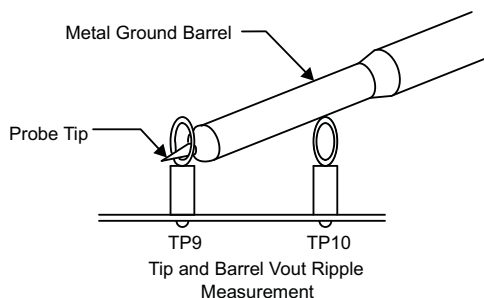


Figure 2. Output Ripple Measurement – Tip and Barrel Using TP9 and TP10

3.3.1.5 Recommended Wire Gauge

V_{12V_IN} to J1

The connection between the source voltage, V_{12V_IN} and J1 can carry as much as 3 A DC. The minimum recommended wire size is AWG #16 with the total length of wire less than 4 feet (2 feet input, 2 feet return).

J2 to LOAD1 (Power)

The power connection between J2 and LOAD1 can carry as much as 15 A DC. The minimum recommended wire size is $2 \times$ AWG #16, with the total length of wire less than 4 feet (2 feet output, 2 feet return).

3.4 Equipment Setup

Shown in [Figure 3](#) is the basic test set up recommended to evaluate the TPS40077EVM-001. Note that although the return for J1 and J2 are the same, the connections should remain separate as shown in [Figure 2](#).

3.4.1 Procedure

1. Working at an ESD workstation, make sure that any wrist straps, bootstraps or mats are connected referencing the user to earth ground before power is applied to the EVM. Electrostatic smock and safety glasses should also be worn.
2. Prior to connecting the DC input source, V_{12V_IN} , it is advisable to limit the source current from V_{12V_IN} to 5.0 A maximum. Make sure V_{12V_IN} is initially set to 0 V and connected as shown in [Figure 3](#).
3. Connect an Ammeter A1 as shown in [Figure 3](#).
4. Connect Voltmeter V1 to TP1 and TP2 as shown in [Figure 3](#).
5. Connect LOAD1 to J2 as shown in [Figure 3](#). Set LOAD1 to constant current mode to sink 0 A DC before V_{12V_IN} is applied.
6. Connect Voltmeter V2 to Output J2 as shown in [Figure 3](#).
7. Connect Oscilloscope probe to TP9 and TP10 as shown in [Figure 2](#).

3.4.2 Diagram

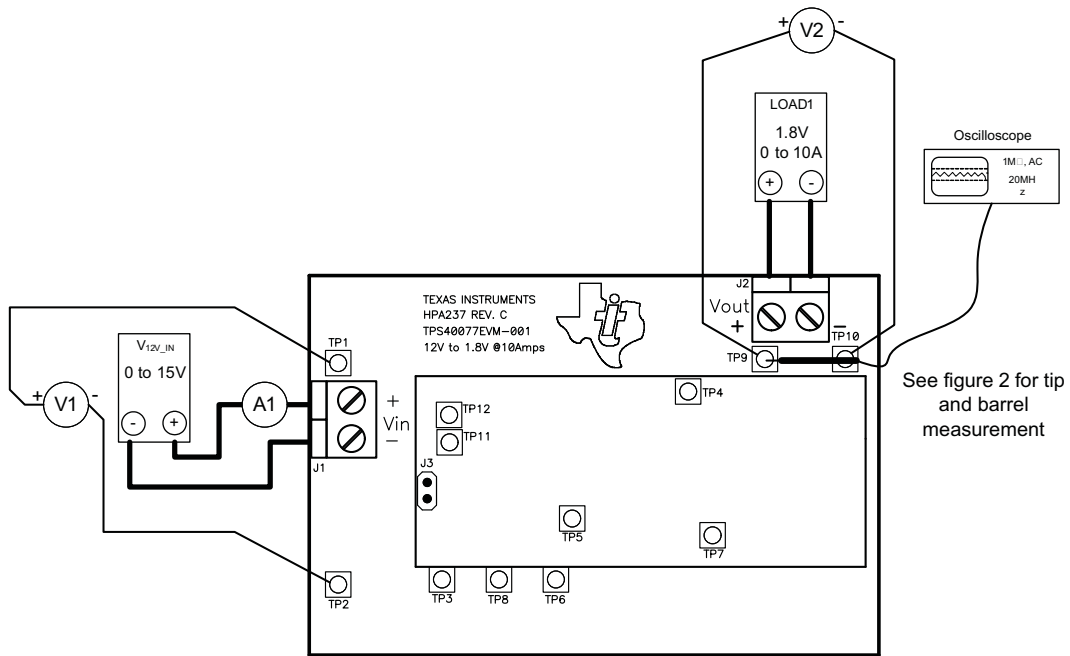


Figure 3. TPS40077EVM-001 Recommended Test Set-Up

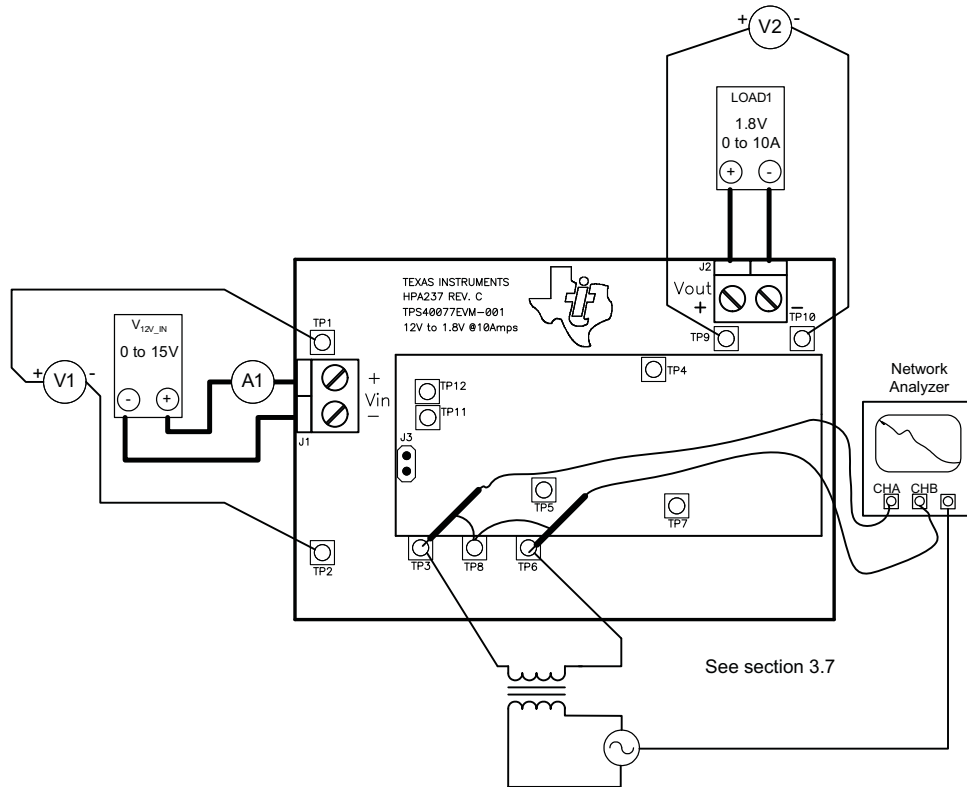


Figure 4. Control Loop Measurement Setup

3.5 Start Up / Shut Down Procedure

1. Increase V_{12V_IN} from 0 V to 12 V DC.
2. Vary LOAD1 from 0–10 A DC
3. Vary V_{12V_IN} from 8 V DC to 16 V DC
4. Decrease LOAD1 to 0 A.

3.6 Control Loop Gain and Phase Measurement Procedure

1. Connect 1 kHz–1 MHz isolation transformer to TP3 and TP6 as shown in [Figure 4](#)
2. Connect input-signal amplitude-measurement probe (channel A) to TP3 as shown in [Figure 4](#)
3. Connect output-signal amplitude measurement probe (channel B) to TP6 as shown in [Figure 4](#)
4. Connect ground lead of channel A and channel B to TP8 as shown in [Figure 4](#)
5. Inject 25 mV or less signal across TP3 and TP6 through an isolation transformer
6. Sweep frequency from 1 kHz to 1 MHz with 10 Hz or lower post filter
7. Control-loop gain can be measured by $20 \times \text{LOG}\left(\frac{\text{ChannelB}}{\text{ChannelA}}\right)$
8. Control-loop phase is measured by the phase difference between channel A and channel B
9. Disconnect isolation transformer from TP3 and TP6 before making other measurements (Signal injection into feedback may interfere with accuracy of other measurements)

3.7 Equipment Shutdown

1. Shut Down Oscilloscope
2. Shut down LOAD1
3. Shut down V_{12V_IN}

4 TPS40077EVM Typical Performance Data and Characteristic Curves

[Figure 5](#) through [Figure 10](#) present typical performance curves for the TPS40077EVM-001. Since actual performance data can be affected by measurement techniques and environmental variables, these curves are presented for reference and may differ from actual field measurements.

4.1 Efficiency

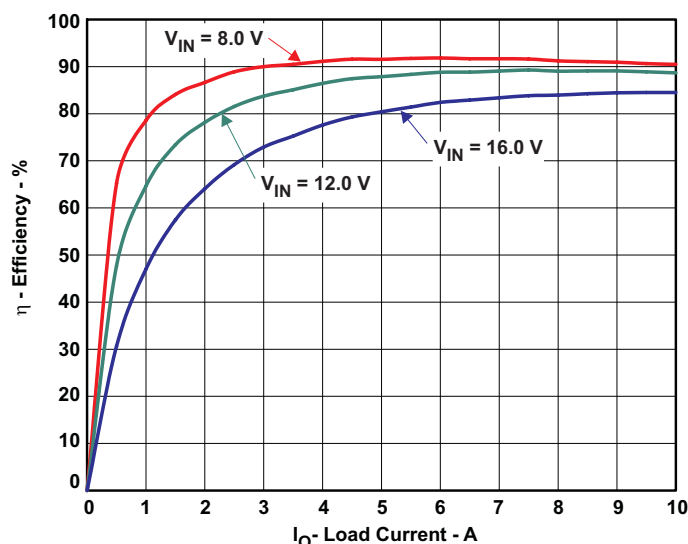


Figure 5. TPS40077EVM-001 Efficiency

4.2 Line and Load Regulation

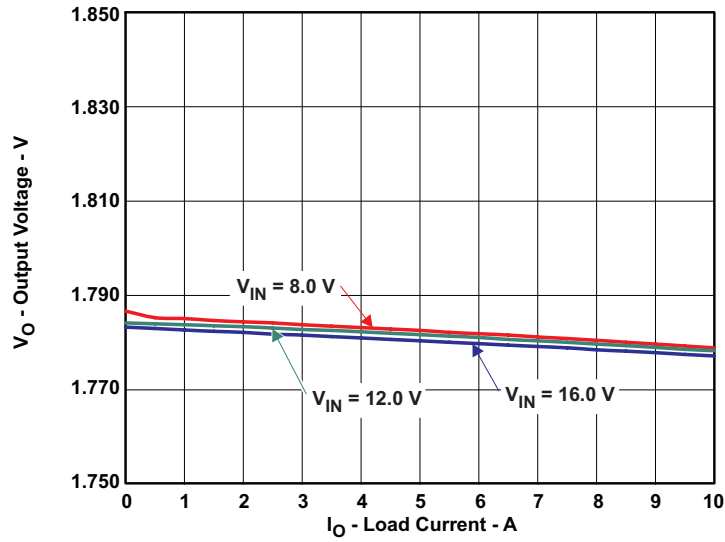


Figure 6. TPS40077EVM-001 Line and Load Regulation

4.3 Output Ripple

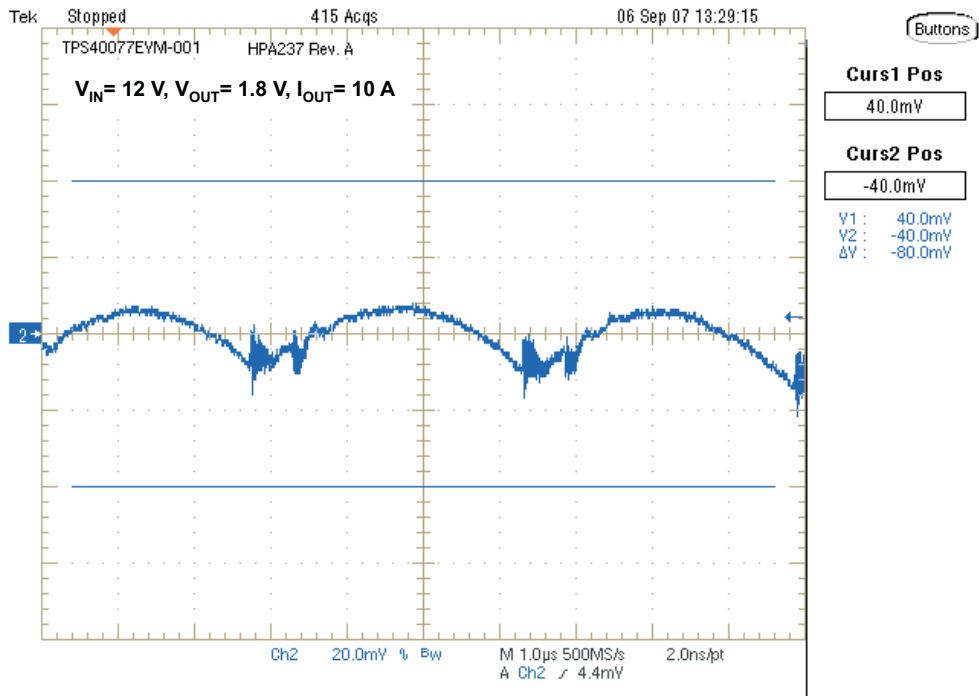


Figure 7. TPS40077EVM-001 Typical Output Ripple

4.4 Transient Response

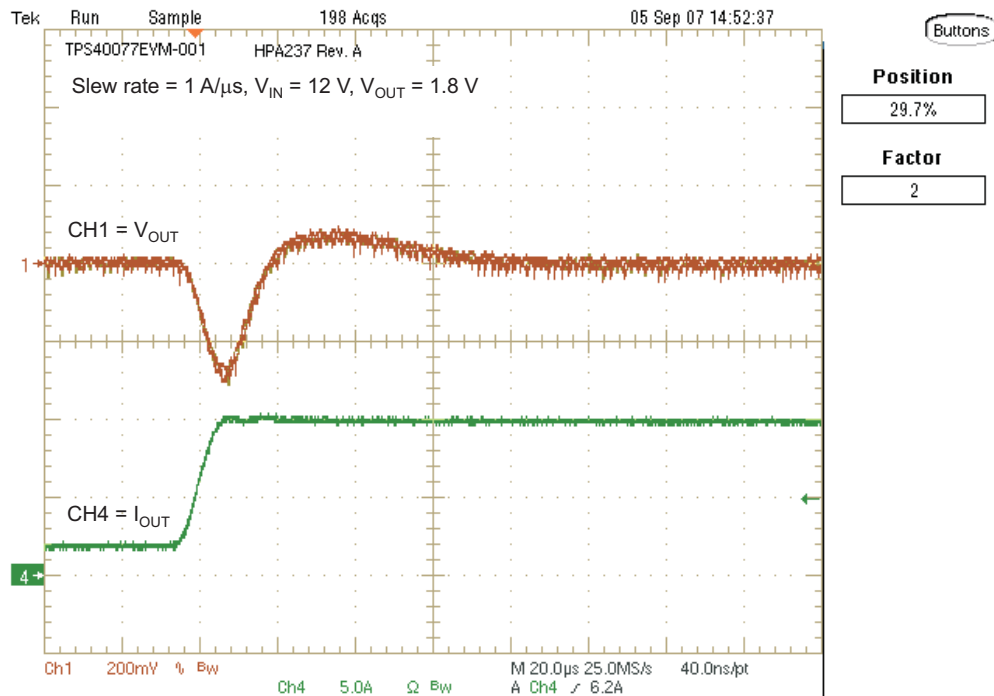


Figure 8. Load Transient, 2 A to 10 A

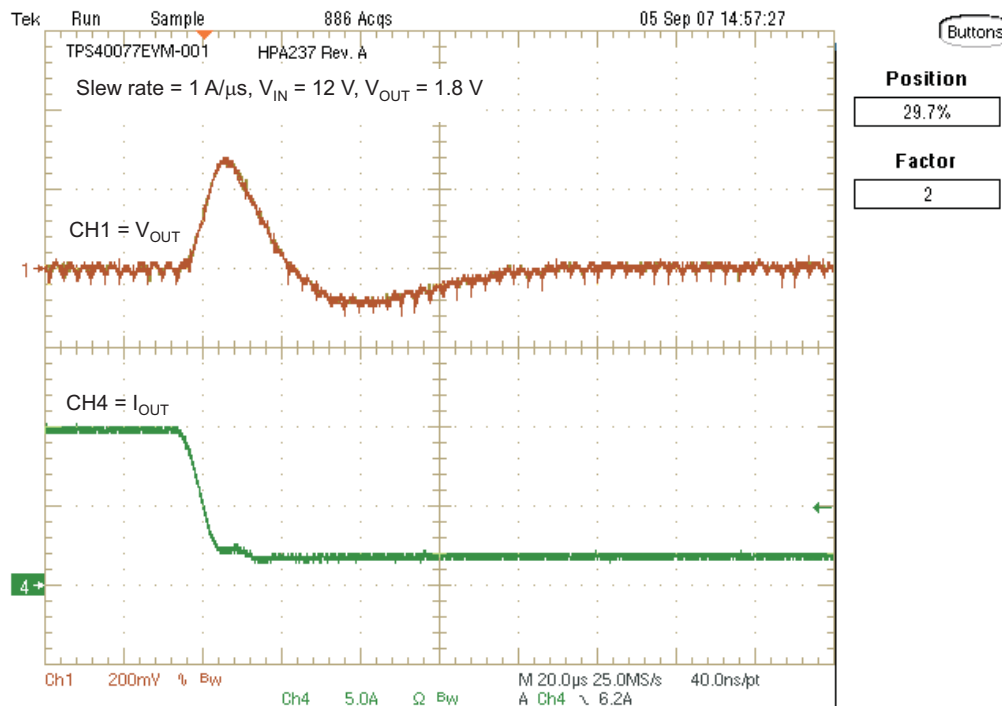


Figure 9. Load Transient, 10 A to 2 A

4.5 Bode Plot

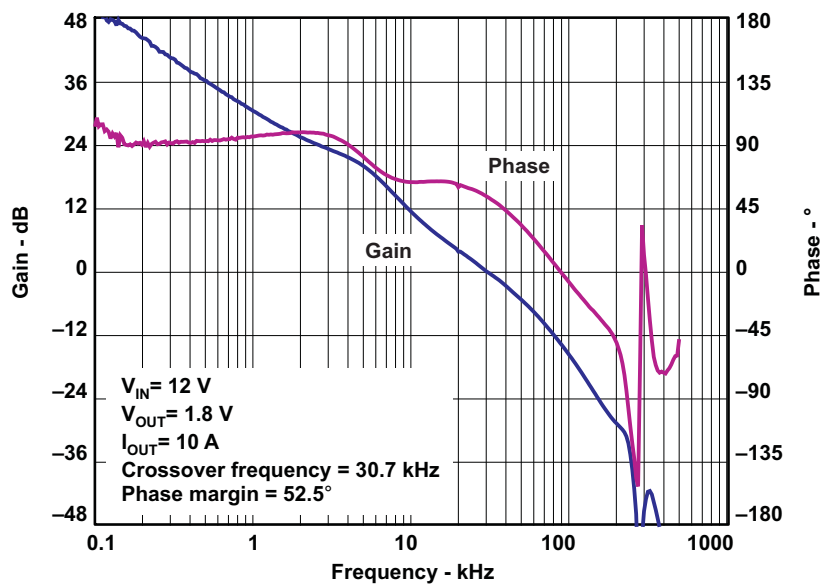


Figure 10. Typical Bode Plot

5 EVM Assembly Drawings and Layout

The following figures (Figure 11 through Figure 13) show the design of the TPS40077EVM-001 printed circuit board. The EVM has been designed using a double-sided, 2-oz copper-clad circuit board, with all components on the top side to allow the user to easily view, probe and evaluate the TPS40077 in a practical application. Moving components to both sides of the PCB or using additional internal layers can offer additional size reduction for space-constrained systems.

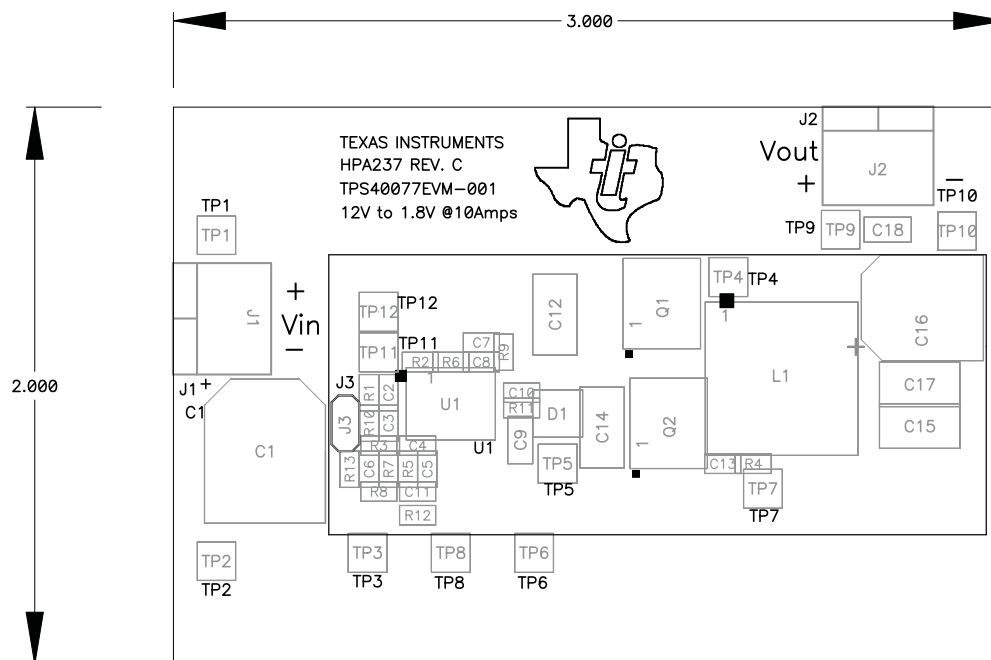


Figure 11. TPS40077EVM-001 Component Placement (Viewed from Top)

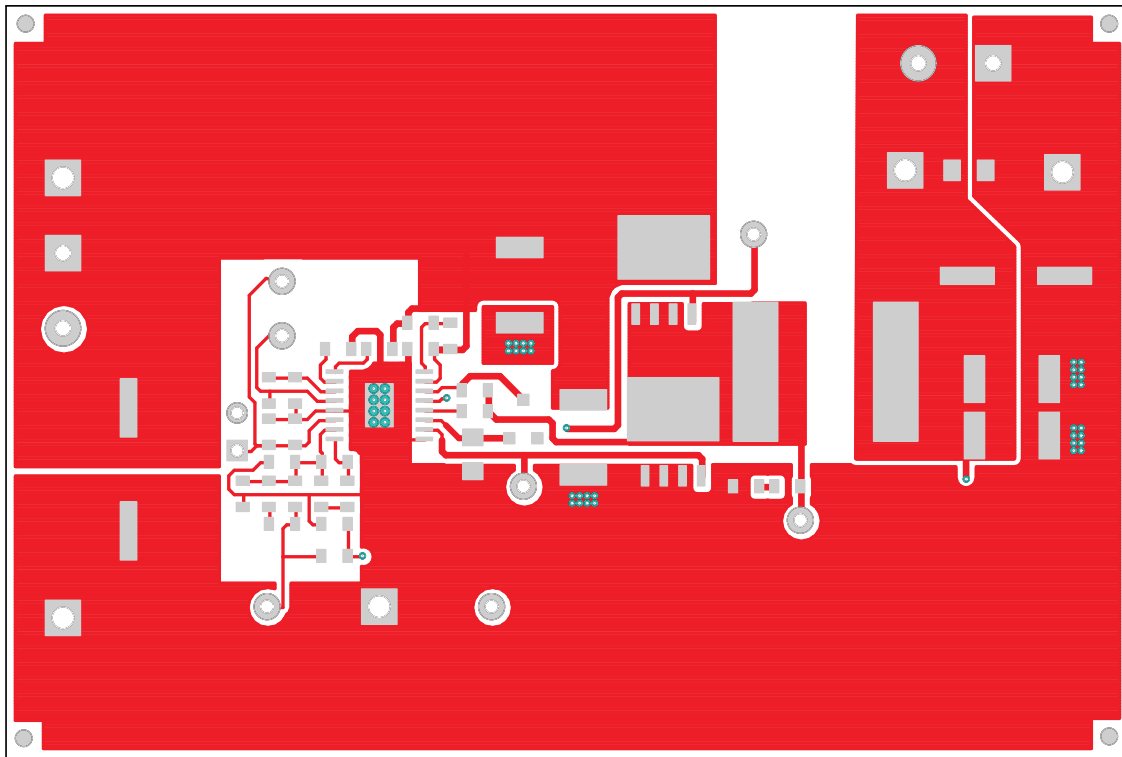


Figure 12. TPS40077EVM-001 Top Copper (Viewed from Top)

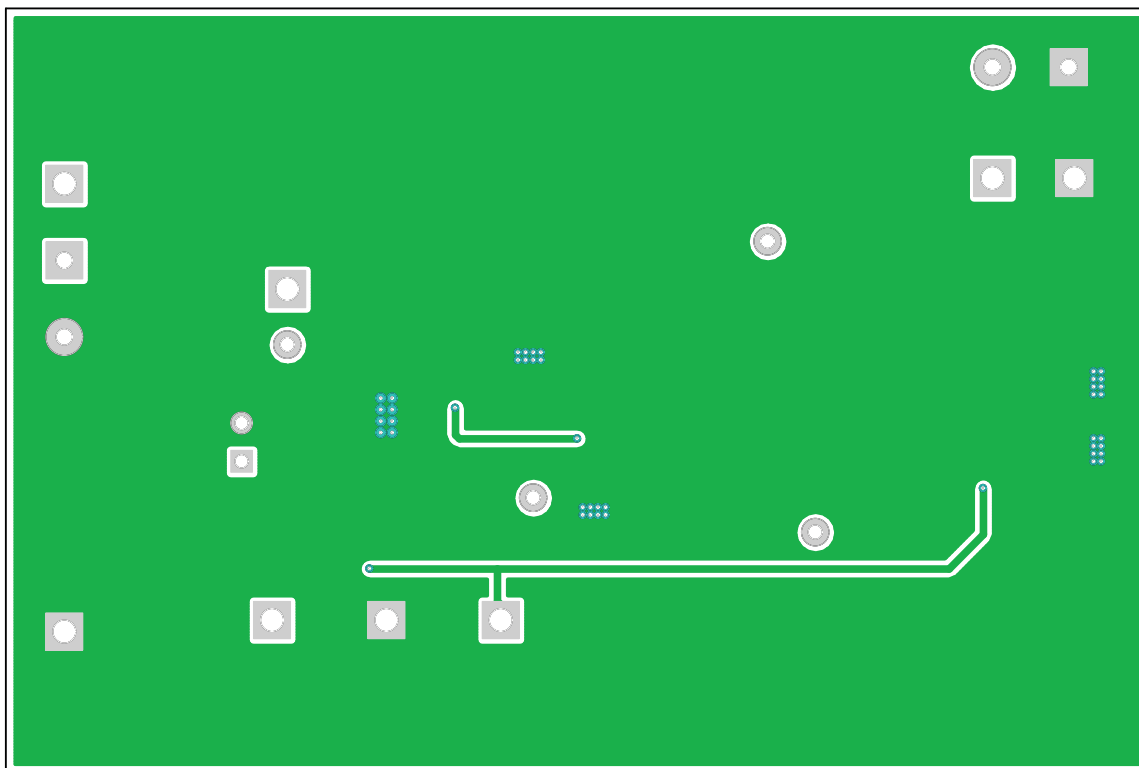


Figure 13. TPS40077EVM-001 Bottom Copper (X-Ray View from Top)

6 List of Materials

Table 3 lists the EVM components as configured according to the schematic shown in Figure 1.

Table 3. Bill of Materials

COUNT	RefDes	Value	Description	Size	Part Number	MFR
1	C1	470 μ F	Capacitor, Aluminum, 470- μ F, 25-V, 20%	0.457 x 0.406	EEVFK1E471P	Panasonic
3	C12, C14, C15	22 μ F	Capacitor, Ceramic, 22 μ F, 16V, X5R, 20%	1812	C4532X5R1C226 MT	TDK
2	C6, C13	2.2 nF	Capacitor, Ceramic, 25V, X7R 20%	0603	Std	Vishay
1	C16	470 μ F	Capacitor, Aluminum, SM, 6.3V, 300m Ω (FK series)	8x10mm	FK-Series	Panasonic
1	C17	47 μ F	Capacitor, Ceramic, 47- μ F, 6.3-V, X5R, 20%	1812	C4532X5R0J476 MT	TDK
2	C2, C10	0.1 μ F	Capacitor, Ceramic, 25V, X7R, 20%	0603	Std	Vishay
1	C3	15 nF	Capacitor, Ceramic, 25V, X7R, 20%	0603	Std	Vishay
1	C4	680 pF	Capacitor, Ceramic, 25V, X7R, 20%	0603	Std	Vishay
1	C5	3900 pF	Capacitor, Ceramic, 25V, X7R 20%	0603	Std	Vishay
1	C7	10 pF	Capacitor, Ceramic, 25V, COG 20%	0603	Std	Vishay
2	C8, C11	0.1 μ F	Capacitor, Ceramic, 25V, X7R, 20%	0603	Std	Vishay
1	C9, C18	1 μ F	Capacitor, Ceramic, 25V, X7R, 20%	0805	Std	Vishay
1	D1		Diode, Schottky, 200-mA, 30-V	SOT23	BAT54	Vishay
1	L1	2.5 μ H	Inductor, SMT, 2.5 μ H, 16.5 A, 3.4 m Ω	0.515 x 0.516	MLC1550-252ML	Coiltronics
1	Q1		MOSFET, NChannel, 30V, 18A, 8.0 m Ω	PWRPAK S0-8	Si7860DP	Vishay
1	Q2		MOSFET, NChannel, 30V, 18A, 40 m Ω	PWRPAK S0-8	Si7886ADP	Vishay
1	R1	10 k Ω	Resistor, Chip, 1/16W, 1%	0603	Std	Std
1	R10	330 k Ω	Resistor, Chip, 1/16W, 1%	0603	Std	Std
1	R12	51 Ω	Resistor, Chip, 1/16W, 1%	0603	Std	Std
1	R13	24.9 k Ω	Resistor, Chip, 1/16W, 1%	0603	Std	Std
2	R2, R6	165 k Ω	Resistor, Chip, 1/16W, 1%	0603	Std	Std
1	R3	4.42 k Ω	Resistor, Chip, 1/16W, 1%	0603	Std	Std
2	R4, R11	0 Ω	Resistor, Chip, 1/16W, 1%	0603	Std	Std
1	R5	3.48 k Ω	Resistor, Chip, 1/16W, 1%	0603	Std	Std
1	R7	5.90 k Ω	Resistor, Chip, 1/16W, 1%	0603	Std	Std
1	R8	953 Ω	Resistor, Chip, 1/16W, 1%	0603	Std	Std
1	R9	1.80 k Ω	Resistor, Chip, 1/16W, 1%	0603	Std	Std
1	U1		IC	PWP16	TPS40077PWP	Texas Instruments

IMPORTANT NOTICE

Texas Instruments Incorporated and its subsidiaries (TI) reserve the right to make corrections, modifications, enhancements, improvements, and other changes to its products and services at any time and to discontinue any product or service without notice. Customers should obtain the latest relevant information before placing orders and should verify that such information is current and complete. All products are sold subject to TI's terms and conditions of sale supplied at the time of order acknowledgment.

TI warrants performance of its hardware products to the specifications applicable at the time of sale in accordance with TI's standard warranty. Testing and other quality control techniques are used to the extent TI deems necessary to support this warranty. Except where mandated by government requirements, testing of all parameters of each product is not necessarily performed.

TI assumes no liability for applications assistance or customer product design. Customers are responsible for their products and applications using TI components. To minimize the risks associated with customer products and applications, customers should provide adequate design and operating safeguards.

TI does not warrant or represent that any license, either express or implied, is granted under any TI patent right, copyright, mask work right, or other TI intellectual property right relating to any combination, machine, or process in which TI products or services are used. Information published by TI regarding third-party products or services does not constitute a license from TI to use such products or services or a warranty or endorsement thereof. Use of such information may require a license from a third party under the patents or other intellectual property of the third party, or a license from TI under the patents or other intellectual property of TI.

Reproduction of TI information in TI data books or data sheets is permissible only if reproduction is without alteration and is accompanied by all associated warranties, conditions, limitations, and notices. Reproduction of this information with alteration is an unfair and deceptive business practice. TI is not responsible or liable for such altered documentation. Information of third parties may be subject to additional restrictions.

Resale of TI products or services with statements different from or beyond the parameters stated by TI for that product or service voids all express and any implied warranties for the associated TI product or service and is an unfair and deceptive business practice. TI is not responsible or liable for any such statements.

TI products are not authorized for use in safety-critical applications (such as life support) where a failure of the TI product would reasonably be expected to cause severe personal injury or death, unless officers of the parties have executed an agreement specifically governing such use. Buyers represent that they have all necessary expertise in the safety and regulatory ramifications of their applications, and acknowledge and agree that they are solely responsible for all legal, regulatory and safety-related requirements concerning their products and any use of TI products in such safety-critical applications, notwithstanding any applications-related information or support that may be provided by TI. Further, Buyers must fully indemnify TI and its representatives against any damages arising out of the use of TI products in such safety-critical applications.

TI products are neither designed nor intended for use in military/aerospace applications or environments unless the TI products are specifically designated by TI as military-grade or "enhanced plastic." Only products designated by TI as military-grade meet military specifications. Buyers acknowledge and agree that any such use of TI products which TI has not designated as military-grade is solely at the Buyer's risk, and that they are solely responsible for compliance with all legal and regulatory requirements in connection with such use.

TI products are neither designed nor intended for use in automotive applications or environments unless the specific TI products are designated by TI as compliant with ISO/TS 16949 requirements. Buyers acknowledge and agree that, if they use any non-designated products in automotive applications, TI will not be responsible for any failure to meet such requirements.

Following are URLs where you can obtain information on other Texas Instruments products and application solutions:

Products

Amplifiers	amplifier.ti.com
Data Converters	dataconverter.ti.com
DSP	dsp.ti.com
Clocks and Timers	www.ti.com/clocks
Interface	interface.ti.com
Logic	logic.ti.com
Power Mgmt	power.ti.com
Microcontrollers	microcontroller.ti.com
RFID	www.ti-rfid.com
RF/IF and ZigBee® Solutions	www.ti.com/lprf

Applications

Audio	www.ti.com/audio
Automotive	www.ti.com/automotive
Broadband	www.ti.com/broadband
Digital Control	www.ti.com/digitalcontrol
Medical	www.ti.com/medical
Military	www.ti.com/military
Optical Networking	www.ti.com/opticalnetwork
Security	www.ti.com/security
Telephony	www.ti.com/telephony
Video & Imaging	www.ti.com/video
Wireless	www.ti.com/wireless

Mailing Address: Texas Instruments, Post Office Box 655303, Dallas, Texas 75265
Copyright © 2008, Texas Instruments Incorporated