

LM5033,LM5100,LM5101A,LM5101B,LM5101C, LM5109A,LM5109B

Application Note 1331 LM5033 Evaluation Board



Literature Number: SNVA091

LM5033 Evaluation Board

National Semiconductor
Application Note 1331
Dennis Morgan
May 2004



Introduction

The LM5033EVAL evaluation board provides the design engineer with a fully functional intermediate bus converter (IBC) employing a half-bridge topology. Configured as an IBC, the circuit operates open loop, resulting in an output voltage which tracks the input voltage. Operating open loop results in very high efficiency (>95%), since the circuit operates at maximum duty cycle, making best use of the transformer with minimal deadtime.

IBCs are used to change a relatively high voltage (e.g., 48V) to a lower voltage (e.g., 9V) to power Point-of-Load (POL) regulators. Since many POLs are buck converters, which have higher efficiency when their input voltage is low, the combination of IBC+POLs provides higher overall system efficiency. Additionally, an IBC provides isolation which buck converters do not.

This board's specifications are:

- Input voltage: 40V to 60V, 48V nominal
- Output voltage: 7.5V to 11.3V, 9.0V nominal
- Output current: 0 to 20A
- Measured efficiency: 95.5% ($40V < V_{IN} < 60V$, $I_o = 11A$)
- Load regulation: $\pm 4\%$ (0-20A)
- Internal oscillator frequency: 315 kHz
- Current limit: $\approx 23A$
- Shutdown input
- Synchronizing input

- Size: 2.3 x 1.45 x 0.43 in. (1/4 brick footprint)

The printed circuit board consists of 4 layers of 2 oz copper on FR4 material, with a thickness of 0.050 in. It is designed for continuous operation at rated load with a minimum airflow of 200 LFPM.

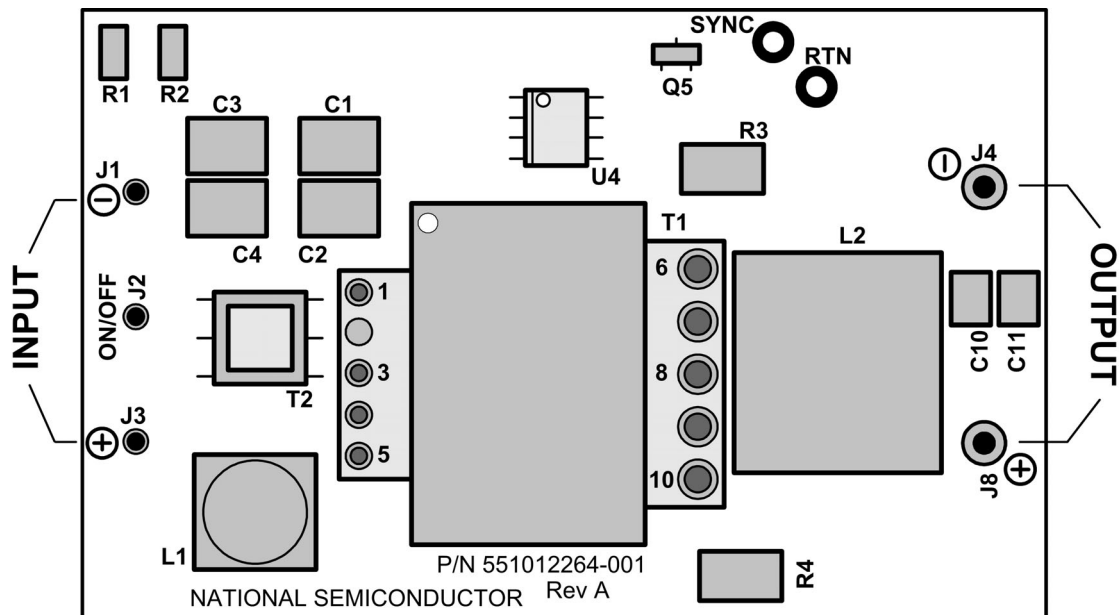
Theory of Operation

Referring to *Figure 8*, the circuit is a half-bridge configuration with Q1 and Q2 as the high side and low side switches, respectively. The half supply point is at the junction of C1-C2 and C3-C4, with R1 and R2 ensuring equal voltage division from V_{IN} . The LM5033 controller alternately drives Q1 and Q2 via the LM5100 level shifting gate driver. The power transformer (T1) has a 5-turn primary, and two secondaries of 2 turns each with a common terminal. The secondary side uses synchronous rectifiers Q3 and Q4 to maintain high efficiency. The 4-turn auxiliary winding powers the V_{CC} line to reduce power dissipation within the LM5033.

Current sensing transformer T2 provides primary side current information to the LM5033 (pin 8) for over-current detection.

Comparators U2A, U2B, and U3A provide under-voltage (UVLO) and over-voltage (OVLO) sensing of V_{IN} . If V_{IN} is outside the range of 40-60V, the circuit shuts down.

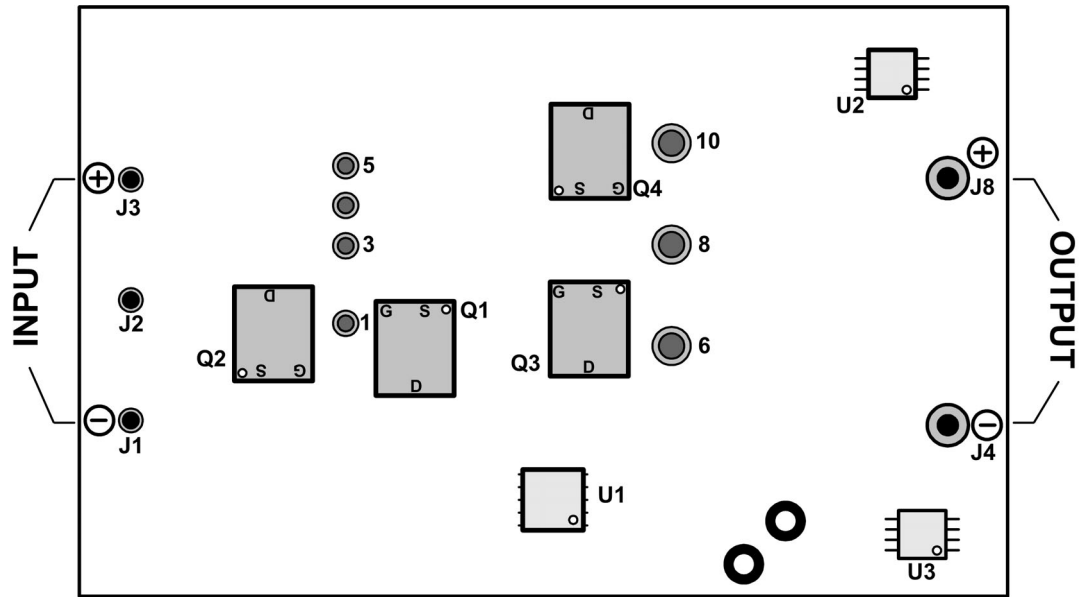
This evaluation board can be synchronized to an external clock. A shutdown pin permits shutting down the output voltage by using an external switch to ground.



20107701

FIGURE 1. Evaluation Board - Top Side

Theory of Operation (Continued)



20107702

FIGURE 2. Evaluation Board - Bottom Side

Board Layout and Probing

The pictorial in *Figure 1* and *Figure 2* shows the placement of the significant components which may be probed in evaluating the circuit's operation. The following should be kept in mind when the board is powered:

1. The board has two circuit grounds - one associated with the input power, and one associated with the output power. The grounds are DC isolated.
2. The main current carrying components (L1, T1, T2, Q1, Q2, L2, Q3 and Q4) will be hot to the touch at maximum load current. USE CAUTION. When operating at load currents in excess of 5A the use of a fan to provide forced air flow IS NECESSARY.
3. Use care when probing the primary side at maximum input voltage. 60 volts is enough to produce shocks and sparks
4. At maximum load current (20A), the wire size and length used to connect the load becomes important. Ensure there is not a significant voltage drop in the wires. A minimum of 14 gauge wire is recommended.
5. The input wires will carry an average of 4A at maximum load current. Ensure these wires are adequately sized.

Board Connections/Start-Up

When operating at load currents in excess of 5A forced air flow across the board IS NECESSARY. The input connections are made to terminals J3 (+) and J1 (-). The source must be capable of supplying the input current shown in *Figure 5*. Upon turn-on the input current increases linearly, without overshoot, due to the LM5033's softstart function .

The load is connected to terminals J8 (+) and J4 (-). A minimum of 14 gauge wire should be used for the 20A load current.

Before start-up a voltmeter should be connected to the input terminals, and one to the output terminals. The input current should be monitored with an ammeter or a current probe. It is recommended that the input voltage be increased gradually until the under-voltage lockout threshold (UVLO, $\approx 37V$) is reached, at which time the output becomes active. At this point the three meters should be checked immediately to ensure they indicate nominal values.

Performance

Once the circuit is powered up and operating normally, the output voltage follows the input voltage as shown in *Figure 6*. The load regulation is $\approx \pm 350\text{ mV}$ ($\pm 4\%$), due to an output impedance of $\approx 30\text{ m}\Omega$. The power conversion efficiency, which exceeds 95%, is shown in *Figure 7*.

Waveforms

Figure 4 shows some of the significant waveforms for various input/output combinations. REMEMBER there are two circuit grounds, and scope probe grounds must be connected appropriately. When viewing the signal at the CS pin the scope probe and its ground lead must be directly across C13.

Primary Side Operation

With V_{IN} within the normal operating range (40V to 60V) the LM5033 alternating outputs drive the LM5100 Gate Driver. The LM5100's LO output drives Q2's gate with a 0V to 10V signal, and the HO output drives Q1's gate with a voltage which switches between ground and 9V above V_{IN} . When Q1 is on current flows from L1 and out of C1/C2 through Q1, T1's primary, T2, and into C3/C4. When Q2 is on current

Primary Side Operation (Continued)

flows out of C3/C4 through T2, T1's primary, and Q2 to ground. The LM5033's guaranteed deadtime ensures Q1 and Q2 are never on simultaneously.

Secondary Side Operation

When Q1 is on, T1's pin 6 is high relative to pins 8 and 10. Q3 is on since its gate is pulled up to between 6V and 9.5V (depending on V_{IN} and the load current) through Q6, causing pin 10 to be within 60 mV of ground. The load current flows from T1's pin 8 through L2, the load, and through Q3 to pin 10. Since pin 10 is effectively at ground Q4 is off, and no current flows out of T1's pin 6 (except for a small amount through Q6 and R18). During the next half cycle, when Q2 is on, T1's pin 10 is high relative to pins 8 and 6, Q4 provides the return path for the load current, and Q3 is off.

During the deadtime when both Q3 and Q4 are off, the load current's return path is through their body diodes. The gate voltage at Q3 and Q4 is limited by Q6 and Q7, respectively, to $\approx 1.5V$ below that at Z2's cathode.

UVLO/OVLO Operation

When V_{IN} exceeds 13V the LM5033 is fully biased, providing 9.6V at V_{CC} and 2.5V at the REF pin. V_{CC} powers comparators U2 and U3 which have open collector outputs. With V_{IN} below the UVLO threshold U2A and U3A outputs are low, grounding the Softstart pin and disabling the LM5033 outputs. When V_{IN} is increased past 37V both U2A and U3A outputs open, releasing the Softstart pin and allowing the voltage across C14 to ramp up. When the Softstart pin voltage exceeds 1.0V the LM5033 outputs become active. When V_{IN} is reduced below 33V U2A and U3A outputs switch low, disabling the LM5033 outputs.

When V_{IN} exceeds the over-voltage lockout threshold (OVLO) at 63V both U2B and U3A outputs switch low, grounding the Softstart pin and disabling the LM5033 outputs. As V_{IN} is reduced below 61.5V both U2B and U3A

outputs open releasing the Softstart pin. When the Softstart pin voltage exceeds 1.0V the LM5033 outputs become active.

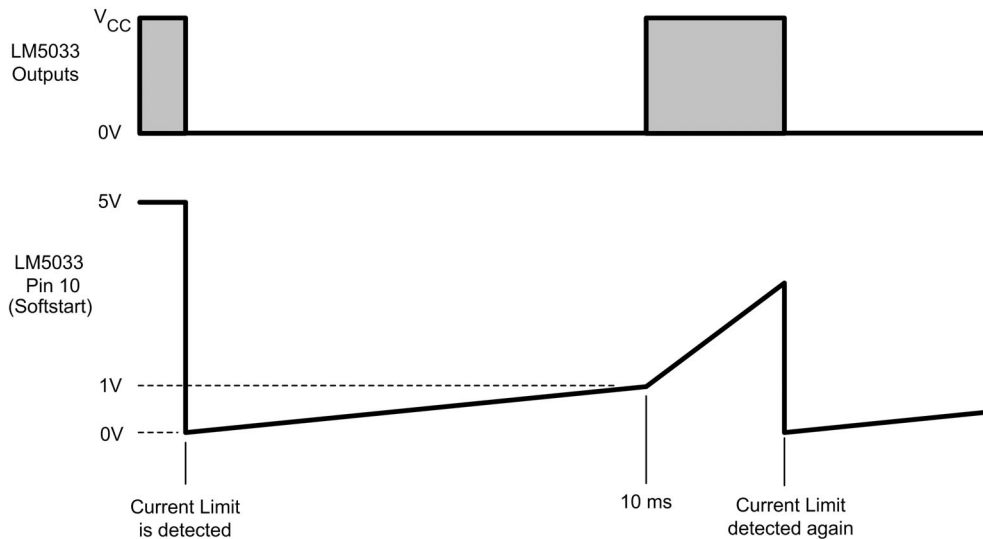
V_{CC}

While the LM5033 internally generates 9.6V at V_{CC} , the internal regulator is used only during start-up and when the LM5033 is shut down by the On/Off input or the UVLO/OVLO circuit. When the LM5033 outputs are enabled, the voltage from T1's auxiliary winding (Pins 1, 5) is regulated to 10.3V by Z1 and Q5. This voltage powers the V_{CC} requirements within the LM5033, the reference voltage at pin 2, the LM5100's V+ pin, and the two dual comparators (U2, U3). The LM5033's internal V_{CC} regulator is shut off, reducing its power dissipation.

Current Limit Operation

The current out of T2's secondary is 1% of the primary current. The voltage across R7 is therefore proportional to the load current reflected through T1, and is provided to the LM5033's CS pin via the R8/C13 filter. When the load current exceeds $\approx 23A$ the voltage at CS will exceed 0.5V causing the LM5033 to disable its outputs, and internally ground the Softstart pin. When the softstart capacitor is fully discharged and the voltage at CS has fallen below 0.5V the Softstart pin is internally released. The Softstart voltage initially rises slowly due to the parallel combination of C14 and C20 (U3B's output is low). After ≈ 10 ms, when the softstart voltage reaches 1.0V, the LM5033 outputs become active and C20 is effectively removed (U3B's open collector output opens). The Softstart voltage then rises rapidly, determined by C14. If the overload condition is still present the above sequence repeats when the current limit threshold is again reached. See Figure 3.

The addition of C20 and U3B lengthens the off-time between retries in a current limit situation, reducing the on-time/off-time ratio. The result is lower average input current and a lower temperature rise in the circuit components



20107703

FIGURE 3. Current Limit Operation

Shutdown

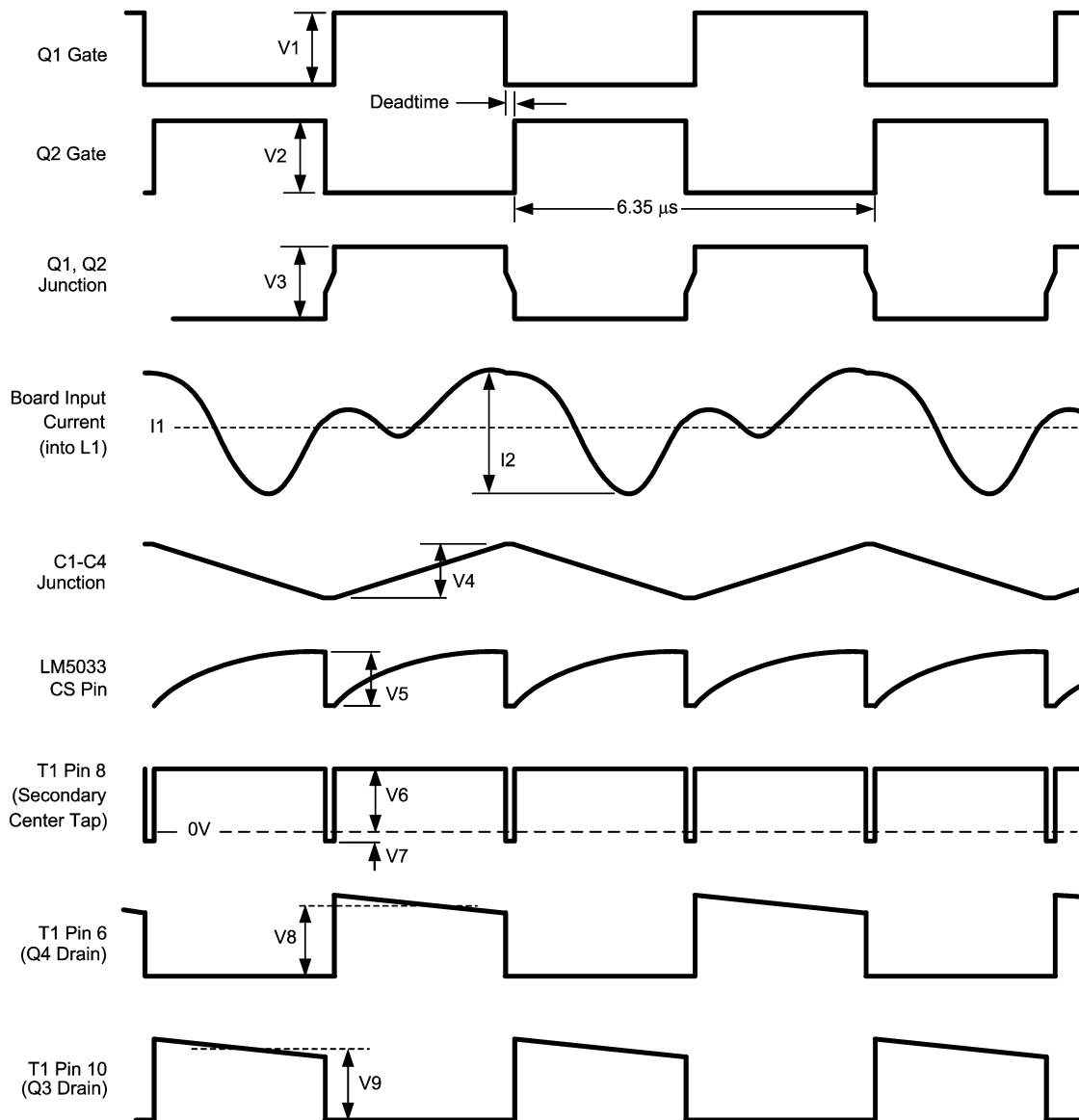
The On/Off pin (J2) permits shutting off the converter by an external switch. J2 must be taken below 0.8V with an open collector or open drain device to disable the LM5033 outputs. Releasing the pin allows the circuit to resume normal operation.

External Sync

The LM5033's internal oscillator can be synchronized to an external signal applied to the SYNC input pad. The external

frequency must be higher than the free running frequency set with the R_T resistor (315 kHz with $R_T = 16.5 \text{ k}\Omega$). The sync input pulse width must be between 15 ns and 150 ns, with an amplitude of 1.8V - 3.0V at the SYNC pad. The pulses are coupled to the LM5033 through a 100 pF capacitor (C15).

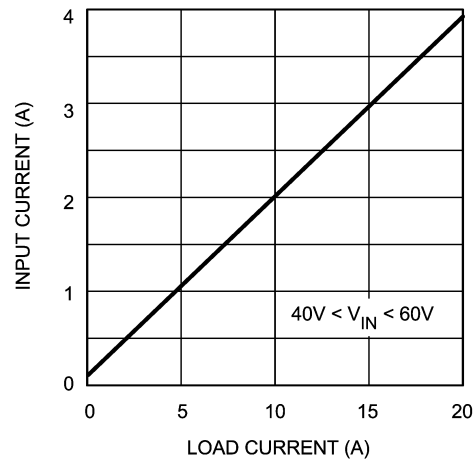
The ground side of the external signal source must be connected to the RTN pad which is adjacent to the SYNC pad. Do not use the ground input pin (J1) for this signal's ground.



| V_{IN}, I_O | V1 | V2 | V3 | V4 | V5 | V6 | V7 | V8 | V9 | I1 | I2 |
|---------------|-----|------|-----|-------|--------|-------|-------|-------|-------|-------|-------|
| 40V, 2A | 49V | 9.8V | 40V | 0.2V | 60 mV | 7.9V | -1.0V | 16.1V | 16.1V | 0.42A | 12 mA |
| 40V, 20A | 48V | 9.8V | 40V | 1.7V | 430 mV | 7.6V | -1.4V | 15.4V | 15.4V | 3.88A | 35 mA |
| 60V, 2A | 69V | 10V | 60V | 0.25V | 60 mV | 12.1V | -1.0V | 23.7V | 23.7V | 0.43A | 19 mA |
| 60V, 20A | 68V | 10V | 60V | 2.1V | 430 mV | 11.7V | -1.4V | 23.2V | 23.2V | 3.93A | 50 mA |

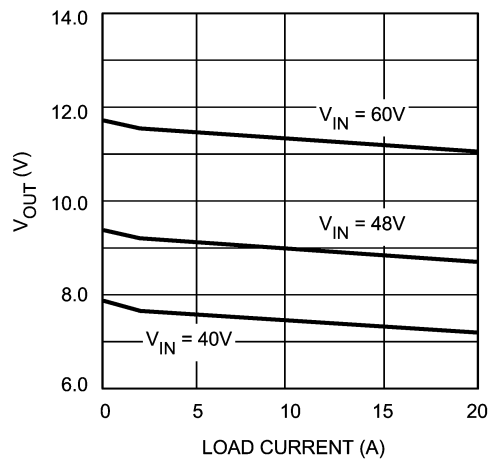
20107704

FIGURE 4. Representative Waveforms



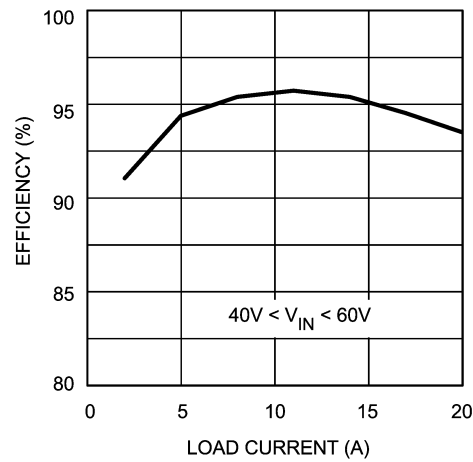
20107705

FIGURE 5. Input Current vs Load Current



20107706

FIGURE 6. V_{OUT} vs Load Current and V_{IN}



20107707

FIGURE 7. Efficiency vs Load Current

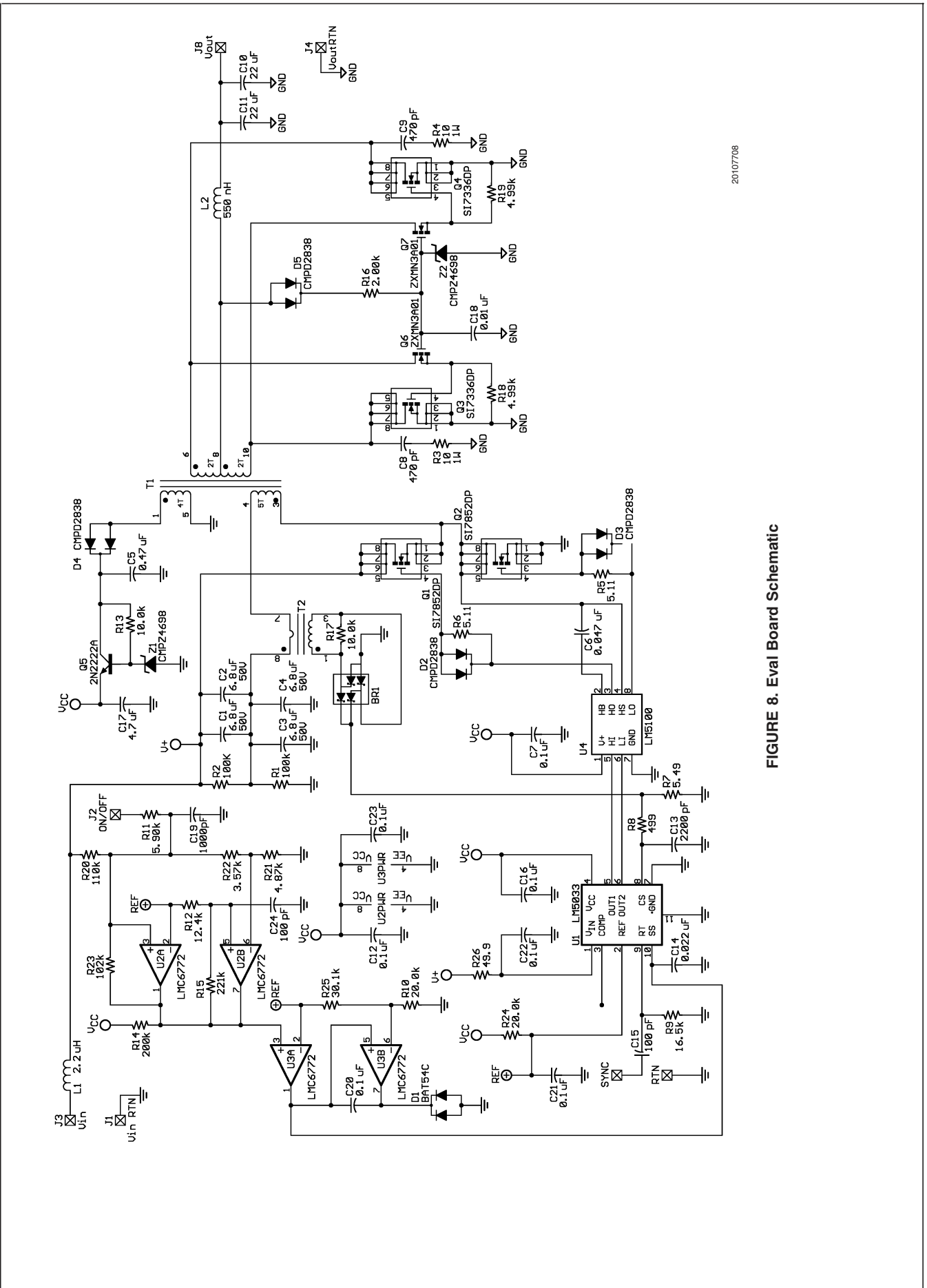


FIGURE 8. Eval Board Schematic

20107708

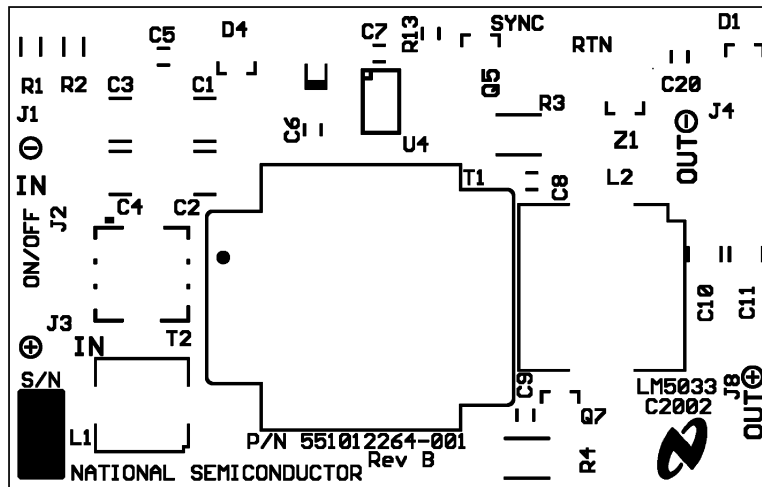
Bill of Materials

| Item | Item | Mfg., Part No. | Package | Value |
|----------------------|-----------------------|--------------------------|---------------|------------------------|
| BR1 | Schottky diode bridge | Diodes, Inc. BAT54BRW | SOT-363 | 30V, 0.2A |
| C1-4 | Capacitor | TDK, C4532X7R1H685M | 1812 | 6.8 μ F, 50V |
| C5 | Capacitor | TDK, C2012X7R1E474M | 0805 | 0.47 μ F, 25V |
| C6 | Capacitor | Kemet, C0805C473M3RAC | 0805 | 0.047 μ F, 25V |
| C7, 12, 16, 20-23 | Capacitor | Kemet, C0805C104M4RAC | 0805 | 0.1 μ F, 16V |
| C8, 9 | Capacitor | Kemet, C0805C471M5RAC | 0805 | 470 pF, 50V |
| C10, 11 | Capacitor | TDK, C3225X7R1C226M | 1210 | 22 μ F, 16V |
| C13 | Capacitor | Kemet, C0805C222K4RAC | 0805 | 2200 pF, 16V |
| C14 | Capacitor | Kemet, C0805C223K4RAC | 0805 | 0.022 μ F, 16V |
| C15, 24 | Capacitor | Kemet, C0805C101K4GAC | 0805 | 100 pF, 16V |
| C17 | Capacitor | TDK, C3216X7R1C475M | 1206 | 4.7 μ F, 16V |
| C18 | Capacitor | Kemet, C0805C103M4RAC | 0805 | 0.01 μ F, 16V |
| C19 | Capacitor | Kemet, C0805C102M4RAC | 0805 | 1000 pF, 16V |
| D1 | Dual Schottky diode | Vishay BAT54C | SOT-23 | 30V, 0.2A |
| D2-5 | Dual diode | Central Semi CMPD2838 | SOT-23 | 75V, 0.2A |
| L1 | Inductor | TDK RLF7030T-2R2M5R4 | SMD | 2.2 μ H, 5.5A |
| L2 | Inductor | TDK SPM12535T-R60M220 | SMD | 550 nH, 22A |
| Q1, 2 | N Channel MOSFET | Vishay Si7852DP | PowerPAK SO-8 | 80V, 12.5A |
| Q3, 4 | N Channel MOSFET | Vishay Si7336DP | PowerPAK SO-8 | 30V, 30A |
| Q5 | NPN Transistor | Central Semi., CMPT2222A | SOT-23 | 75V, 0.6A |
| Q6, 7 | N Channel MOSFET | Zetex, ZXMN3A01F | SOT-23 | 30V, 2 A |
| R1, 2 | Resistor | Vishay, CRCW12061003F | 1206 | 100 k Ω , 1/4 W |
| R3, 4 | Resistor | Vishay, CRCW251210R0F | 2512 | 10 Ω , 1W |
| R5, 6 | Resistor | Vishay, CRCW08055R11F | 0805 | 5.11 Ω |
| R7 | Resistor | Vishay, CRCW08055R49F | 0805 | 5.49 Ω |
| R8 | Resistor | Vishay, CRCW08054990F | 0805 | 499 Ω |
| R9 | Resistor | Vishay, CRCW08051652F | 0805 | 16.5 k Ω |
| R10, 24 | Resistor | Vishay, CRCW08052002F | 0805 | 20 k Ω |
| R11 | Resistor | Vishay, CRCW08055901F | 0805 | 5.9 k Ω |
| R12 | Resistor | Vishay, CRCW08051242F | 0805 | 12.4 k Ω |
| R13, 17 | Resistor | Vishay, CRCW08051002F | 0805 | 10 k Ω |
| R14 | Resistor | Vishay, CRCW08052003F | 0805 | 200 k Ω |
| R15 | Resistor | Vishay, CRCW08052213F | 0805 | 221 k Ω |
| R16 | Resistor | Vishay, CRCW08052001F | 0805 | 2.0 k Ω |
| R18, 19 | Resistor | Vishay, CRCW08054991F | 0805 | 4.99 k Ω |
| R20 | Resistor | Vishay, CRCW12061103F | 1206 | 110 k Ω , 1/4 W |
| R21 | Resistor | Vishay, CRCW08054871F | 0805 | 4.87 k Ω |
| R22 | Resistor | Vishay, CRCW08053571F | 0805 | 3.57 k Ω |
| R23 | Resistor | Vishay, CRCW08051023F | 0805 | 102 k Ω |
| R25 | Resistor | Vishay, CRCW08053012F | 0805 | 30.1 k Ω |
| R26 | Resistor | Vishay, CRCW080549R9F | 0805 | 49.9 Ω |
| T1 | Power Transformer | Coilcraft B0853-A | Planar | |

Bill of Materials (Continued)

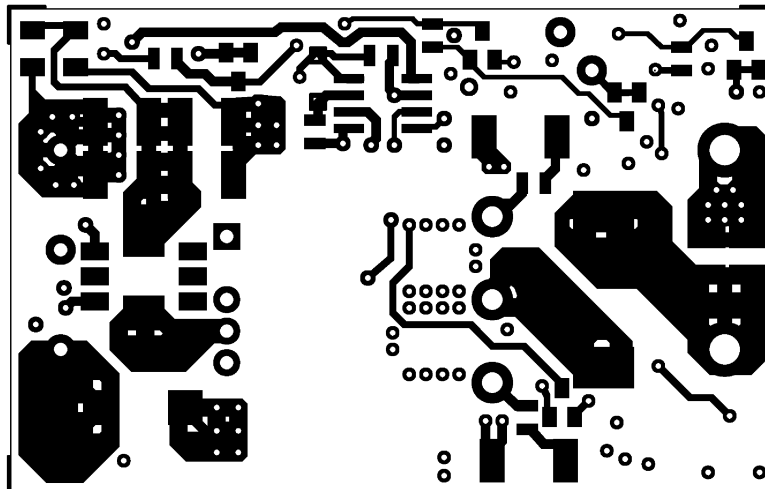
| Item | Item | Mfg., Part No. | Package | Value |
|-------|----------------------------|------------------------|-----------|-------------|
| T2 | Current Sense Transformer | Pulse Eng. P8208 | SMD | 100:1, 10A |
| U1 | PWM Controller | National Semi LM5033SD | LLP-10 | |
| U2, 3 | Dual Micropower Comparator | Nat'l Semi LMC6772 | Mini SO-8 | |
| U4 | Gate Driver | National Semi LM5100M | SO-8 | |
| Z1, 2 | Zener diode | Central Semi CMPZ4698 | SOT-23 | 11V, 350 mW |

PCB Layouts



Top Silk Screen

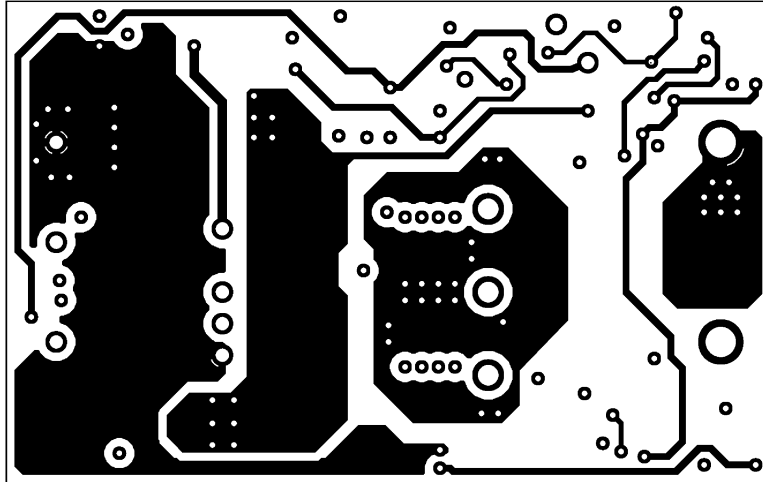
20107709



Top Layer

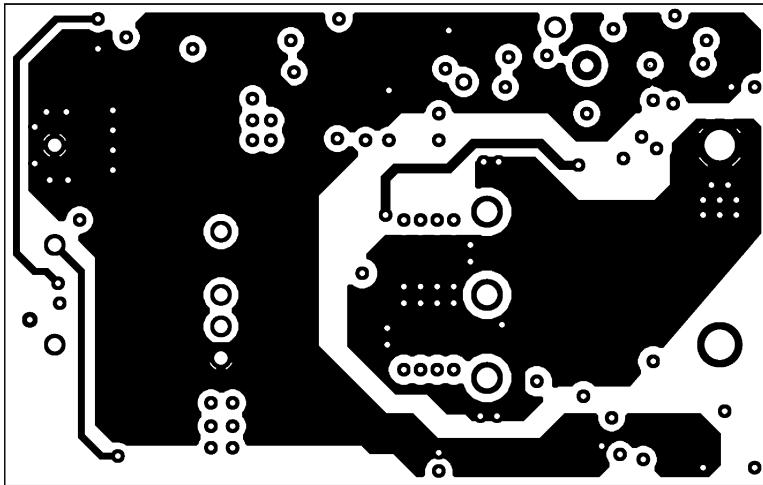
20107710

PCB Layouts (Continued)



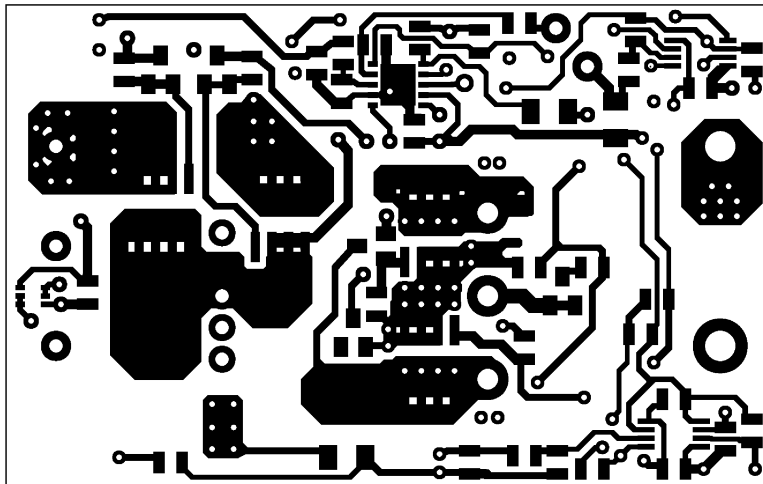
20107711

Layer 2



20107712

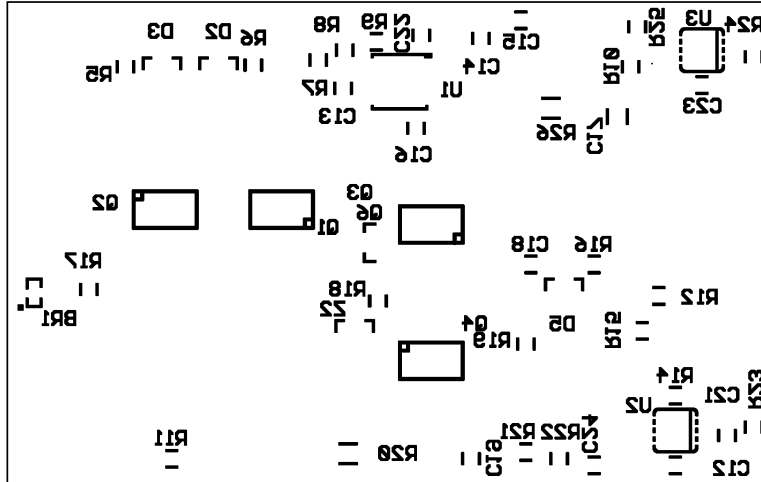
Layer 3



20107713

Bottom Layer, as viewed from the Top

PCB Layouts (Continued)



20107714

Bottom Silk Screen, as viewed from the Top


LIFE SUPPORT POLICY

NATIONAL'S PRODUCTS ARE NOT AUTHORIZED FOR USE AS CRITICAL COMPONENTS IN LIFE SUPPORT DEVICES OR SYSTEMS WITHOUT THE EXPRESS WRITTEN APPROVAL OF THE PRESIDENT AND GENERAL COUNSEL OF NATIONAL SEMICONDUCTOR CORPORATION. As used herein:

1. Life support devices or systems are devices or systems which, (a) are intended for surgical implant into the body, or (b) support or sustain life, and whose failure to perform when properly used in accordance with instructions for use provided in the labeling, can be reasonably expected to result in a significant injury to the user.
2. A critical component is any component of a life support device or system whose failure to perform can be reasonably expected to cause the failure of the life support device or system, or to affect its safety or effectiveness.

BANNED SUBSTANCE COMPLIANCE

National Semiconductor certifies that the products and packing materials meet the provisions of the Customer Products Stewardship Specification (CSP-9-111C2) and the Banned Substances and Materials of Interest Specification (CSP-9-111S2) and contain no "Banned Substances" as defined in CSP-9-111S2.

| | | | |
|--|--|---|--|
|  <p>National Semiconductor Americas Customer Support Center Email: new.feedback@nsc.com Tel: 1-800-272-9959 www.national.com</p> | <p>National Semiconductor Europe Customer Support Center Fax: +49 (0) 180-530 85 86 Email: europe.support@nsc.com Deutsch Tel: +49 (0) 69 9508 6208 English Tel: +44 (0) 870 24 0 2171 Français Tel: +33 (0) 1 41 91 8790</p> | <p>National Semiconductor Asia Pacific Customer Support Center Email: ap.support@nsc.com</p> | <p>National Semiconductor Japan Customer Support Center Fax: 81-3-5639-7507 Email: jpn.feedback@nsc.com Tel: 81-3-5639-7560</p> |
|--|--|---|--|

IMPORTANT NOTICE

Texas Instruments Incorporated and its subsidiaries (TI) reserve the right to make corrections, modifications, enhancements, improvements, and other changes to its products and services at any time and to discontinue any product or service without notice. Customers should obtain the latest relevant information before placing orders and should verify that such information is current and complete. All products are sold subject to TI's terms and conditions of sale supplied at the time of order acknowledgment.

TI warrants performance of its hardware products to the specifications applicable at the time of sale in accordance with TI's standard warranty. Testing and other quality control techniques are used to the extent TI deems necessary to support this warranty. Except where mandated by government requirements, testing of all parameters of each product is not necessarily performed.

TI assumes no liability for applications assistance or customer product design. Customers are responsible for their products and applications using TI components. To minimize the risks associated with customer products and applications, customers should provide adequate design and operating safeguards.

TI does not warrant or represent that any license, either express or implied, is granted under any TI patent right, copyright, mask work right, or other TI intellectual property right relating to any combination, machine, or process in which TI products or services are used. Information published by TI regarding third-party products or services does not constitute a license from TI to use such products or services or a warranty or endorsement thereof. Use of such information may require a license from a third party under the patents or other intellectual property of the third party, or a license from TI under the patents or other intellectual property of TI.

Reproduction of TI information in TI data books or data sheets is permissible only if reproduction is without alteration and is accompanied by all associated warranties, conditions, limitations, and notices. Reproduction of this information with alteration is an unfair and deceptive business practice. TI is not responsible or liable for such altered documentation. Information of third parties may be subject to additional restrictions.

Resale of TI products or services with statements different from or beyond the parameters stated by TI for that product or service voids all express and any implied warranties for the associated TI product or service and is an unfair and deceptive business practice. TI is not responsible or liable for any such statements.

TI products are not authorized for use in safety-critical applications (such as life support) where a failure of the TI product would reasonably be expected to cause severe personal injury or death, unless officers of the parties have executed an agreement specifically governing such use. Buyers represent that they have all necessary expertise in the safety and regulatory ramifications of their applications, and acknowledge and agree that they are solely responsible for all legal, regulatory and safety-related requirements concerning their products and any use of TI products in such safety-critical applications, notwithstanding any applications-related information or support that may be provided by TI. Further, Buyers must fully indemnify TI and its representatives against any damages arising out of the use of TI products in such safety-critical applications.

TI products are neither designed nor intended for use in military/aerospace applications or environments unless the TI products are specifically designated by TI as military-grade or "enhanced plastic." Only products designated by TI as military-grade meet military specifications. Buyers acknowledge and agree that any such use of TI products which TI has not designated as military-grade is solely at the Buyer's risk, and that they are solely responsible for compliance with all legal and regulatory requirements in connection with such use.

TI products are neither designed nor intended for use in automotive applications or environments unless the specific TI products are designated by TI as compliant with ISO/TS 16949 requirements. Buyers acknowledge and agree that, if they use any non-designated products in automotive applications, TI will not be responsible for any failure to meet such requirements.

Following are URLs where you can obtain information on other Texas Instruments products and application solutions:

Products

| | |
|------------------------|--|
| Audio | www.ti.com/audio |
| Amplifiers | amplifier.ti.com |
| Data Converters | dataconverter.ti.com |
| DLP® Products | www.dlp.com |
| DSP | dsp.ti.com |
| Clocks and Timers | www.ti.com/clocks |
| Interface | interface.ti.com |
| Logic | logic.ti.com |
| Power Mgmt | power.ti.com |
| Microcontrollers | microcontroller.ti.com |
| RFID | www.ti-rfid.com |
| OMAP Mobile Processors | www.ti.com/omap |
| Wireless Connectivity | www.ti.com/wirelessconnectivity |

Applications

| | |
|-------------------------------|--|
| Communications and Telecom | www.ti.com/communications |
| Computers and Peripherals | www.ti.com/computers |
| Consumer Electronics | www.ti.com/consumer-apps |
| Energy and Lighting | www.ti.com/energy |
| Industrial | www.ti.com/industrial |
| Medical | www.ti.com/medical |
| Security | www.ti.com/security |
| Space, Avionics and Defense | www.ti.com/space-avionics-defense |
| Transportation and Automotive | www.ti.com/automotive |
| Video and Imaging | www.ti.com/video |

TI E2E Community Home Page

e2e.ti.com

Mailing Address: Texas Instruments, Post Office Box 655303, Dallas, Texas 75265
Copyright © 2011, Texas Instruments Incorporated