

Using the TPS24700EVM-001, TPS24701EVM-002, TPS24710EVM-003 and the TPS24711EVM-004

User's Guide



Literature Number: SLUU459

January 2011

TPS24700/01/10/11 Evaluation Module (TPS24700EVM-001, TPS24701EVM-002, TPS24710EVM-003 and the TPS24711EVM-004)

This User's Guide describes the setup and operation of the TPS24700EVM-001, TPS24701EVM-002, TPS24710EVM-003 and the TPS24711EVM-004 system test boards.

1 Introduction

This User's Guide describes the features of the TPS24700/01/10/11EVM. Also provided are the schematic, layout and list of materials.

2 Description

The EVM is a 3-V to 20-V module using the TPS24700/01/10/11 hot-swap controller with external MOSFET. At power on, the output is power limited to control inrush current and protect the MOSFET. On an over-current condition, the controller interrupts power to the load at high speed and signals load status. Operating current, fault current and fault timer settings are hardware programmable.

2.1 Applications

- Server
 - Plug-In Circuit Boards
 - RAID/Disk Drive
- Telecom
 - ATCA
 - Micro-ATCA
- General Hot Plug

2.2 Features

- Board design covers input/output from 3-V to 20-V but is factory set for 12-V operation. The customer can change components to operate at other voltages and currents.
- Board design for 50-A steady state max output. The EVM will be set up for a 12-V, 25-A nominal application. The datasheet design examples show how to select components for other operating set points.
- Latch-off or re-try controller by part number.
- Input/output out of operating range transient voltage protections.
- Support components to be 0603 size where permitted by power dissipation or component ratings.
- 2-oz copper, 4 layer.
- On-board $\overline{\text{ENABLE}}$ input (slide switch).

3 Schematic

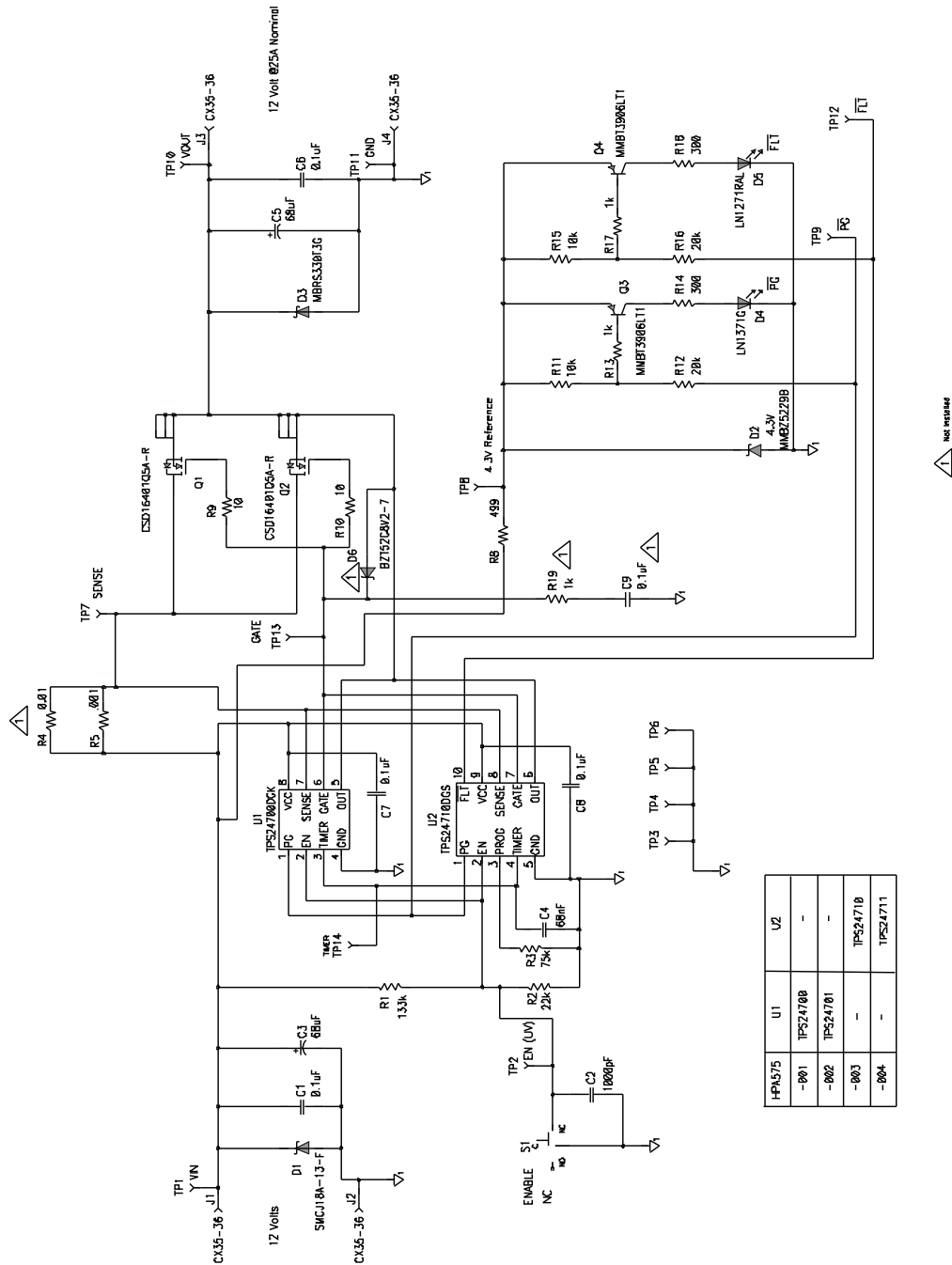


Figure 1.

4 Overvoltage Protection

Input protection for the TPS24700A and MOSFET consists of a 15-V TVS and 0.1- μ F and 47- μ F capacitors located close to the V_{IN} pins. The TVS is active at 16.5 V minimum. TVS is Vishay SMAJ15A, 400 W, SMA package.

Output protection is a fixed 47- μ F capacitor and a parallel 0.1- μ F capacitor located at the output terminals. A schottky diode on the output clamps negative going transitions. Diode MBRS3100T3, 3 A, 100 V.

5 ENABLE Signal

Slide switch to operate $\overline{\text{ENABLE}}$ signal. The Enable signal is externally pulled to V_{IN} through a resistor divider to set the UV to 10-V. A 0.1- μ F capacitor will be used to help de-bounce the Enable switch.

6 Test Points

Test points are located on the board edge.

Table 1. Test Points

NAME	DESCRIPTION
ENUV	Enable Signal
4.3-V REF	4.3 V
$\overline{\text{PG}}$	Power Good, Signal, Low True
$\overline{\text{FLT}}$	Fault, Signal, Low True
SENSE	Sense Resistor Voltage Low
GND	Scope Ground Test Point
GND	Scope Ground Test Point
GND	Scope Ground Test Point
GND	Scope Ground Test Point
VOUT	Output Voltage
CT	Fault Timer Capacitor
PROG	Program Voltage
SET	Current Limit Set Point
GATE	Gate Signal
VIN	Input Voltage Power Supply

7 Jumpers

None

8 Indicator LEDs

A 4.3-V Zener is used to control the voltage applied to the EN signal. It is also used to limit the voltage range on the LEDs. A bipolar signal transistor is used to turn on the LED while keeping the $\overline{\text{PG}}$ and $\overline{\text{FLT}}$ signals less than 0.3-V active.

Table 2. Indicator LED Colors

SIGNAL	LED COLOR
$\overline{\text{PG}}$	Green
$\overline{\text{FLT}}$	Red

9 Disable Power Limiting

Power limiting can be disabled by leaving the PROG pin open (no programming resistor). The soft-start time can be controlled by a gate capacitor and series 1-k Ω resistor. See Not Installed.

10 Not Installed

- D6 is installed if the VGS needs to be limited. The zener voltage rating set VGS max.
- R19, C9 installed if the soft start is not controlled by power limiting but by gate current and the selected C9 Where $C = I \times T / V$. Example, for 10-ms start on a 12-V board, $C = 30 \mu\text{A} \times 10 \text{ ms} / 25 \text{ V}$, $C = 12 \text{ nF}$.

11 EVM Assembly Drawings and Layout

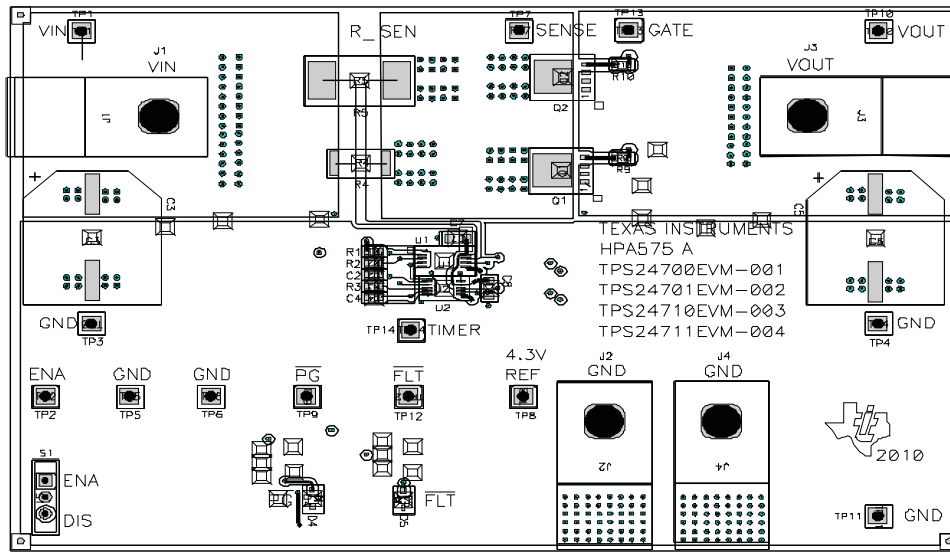


Figure 2. Board Top

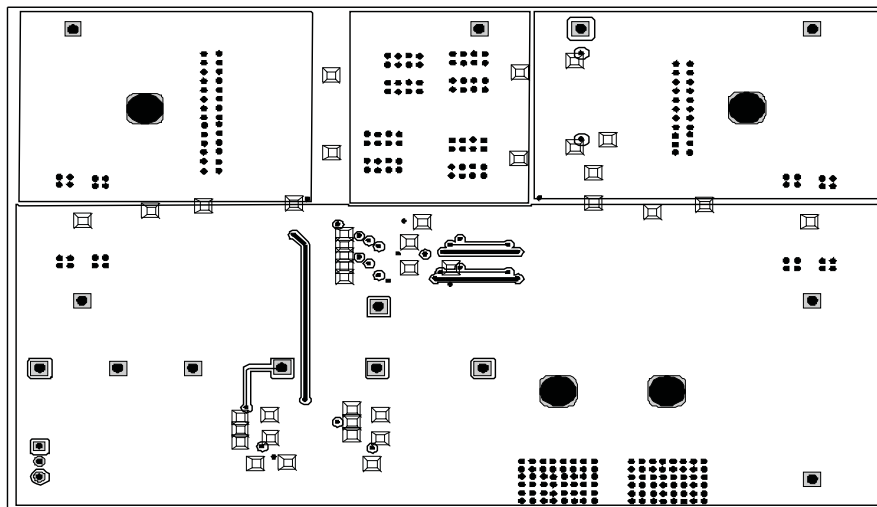


Figure 3. Layer 1

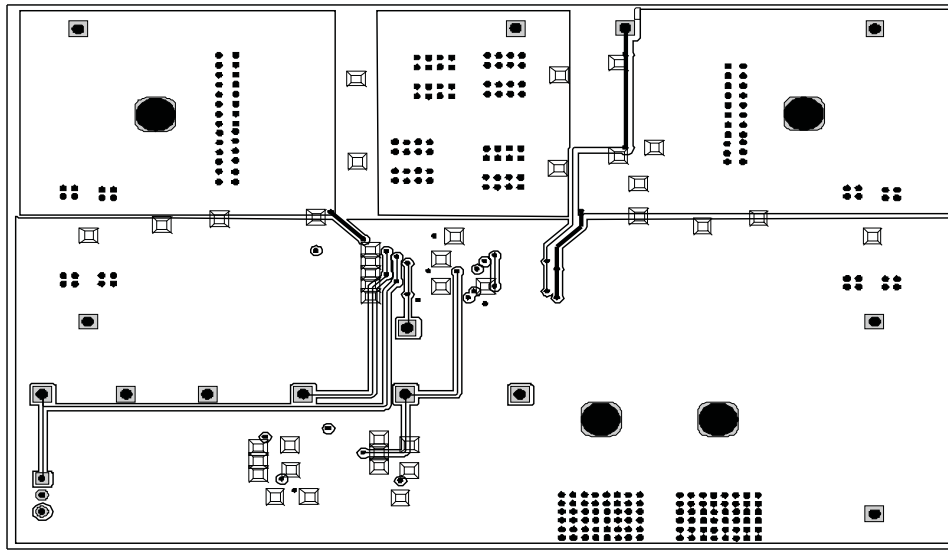


Figure 4. Layer 2

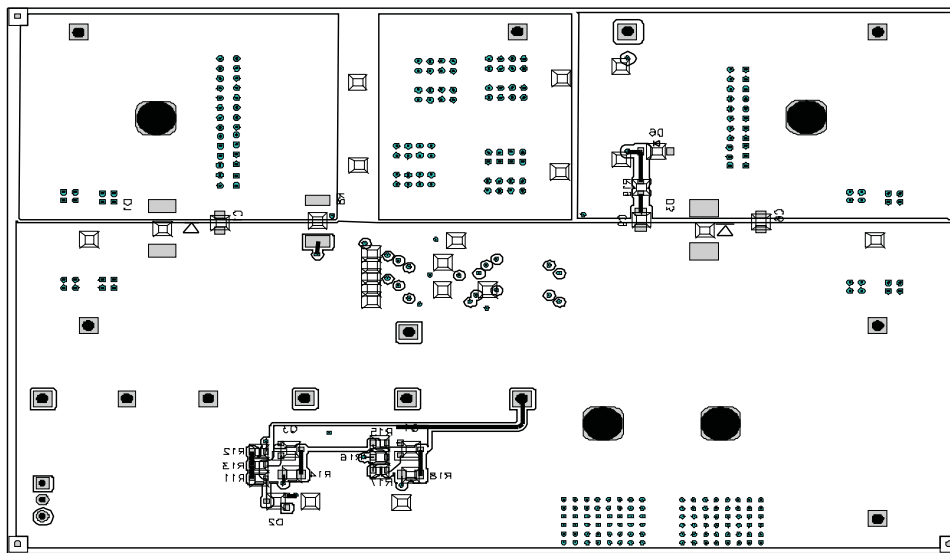


Figure 5. Board Bottom

12 List of Materials

Table 3. List of Materials⁽¹⁾⁽²⁾⁽³⁾⁽⁴⁾

-004	-003	-002	-001	REF DES	DESCRIPTION	PART NUMBER	MFR
4	4	4	4	C1, C6, C7, C8	Capacitor, ceramic, 100 V, X7R, 10%, 0.1 µF, 0805	STD	STD
0	0	0	0	C9	Capacitor, ceramic, 100 V, X7R, 10%, 0.1 µF, 0805	STD	STD
1	1	1	1	C2	Capacitor, ceramic, 100 V, X7R, 10%, 1000 pF, 0603	STD	STD
2	2	2	2	C3, C5	Capacitor, aluminum, 80 VDC, ±20%, 68 µF, 0.670 inch x 0.750 inch	EEVFK1K680Q	Panasonic
1	1	1	1	C4	Capacitor, ceramic, 16 V, X7R, 10%, 68 nF, 0603	STD	STD
1	1	1	1	D1	Diode, [uni-]directional TVS, 1500 W, SMC	SMCJ18A-13-F	Diodes
1	1	1	1	D2	Diode, Zener, 4.3 V, SOT23	MMBZ5229B	Motorola
1	1	1	1	D3	Diode, Schottky, 3 A, 40 V, SMC	MBRS330T3G	On Semi
1	1	1	1	D4	Diode, LED, green, 0.114 inch x 0.049 inch	LN1371G	Panasonic
1	1	1	1	D5	Diode, LED, ultra bright red, 0.114 inch x 0.049 inch	LN1271RAL	Panasonic
0	0	0	0	D6	Diode, Zener, planar power, 500 mW, 8.2 V, SOD-123	BZT52C8V2-7	Vishay
4	4	4	4	J1, J2, J3, J4	Lug, copper, 35 A, 0.380 inch x 1.020 inch	CX35-36	Panduit
2	2	2	2	Q1, Q2	MOSFET, N-channel, 25 V, 37 A, 1.3 mΩ, QFN 5 x 6 mm	CSD16401Q5A-R	Ciclon
2	2	2	2	Q3, Q4	Bipolar, PNP, 40 V, 200 mA, SOT23	MMBT3906LT1	On Semi
1	1	1	1	R1	Resistor, chip, 1/16 W, 1%, 133 kΩ, 0603	STD	STD
2	2	2	2	R11, R15	Resistor, chip, 1/16 W, 5%, 10 kΩ, 0603	STD	STD
2	2	2	2	R12, R16	Resistor, chip, 1/16 W, 5%, 20 kΩ, 0603	STD	STD
2	2	2	2	R13, R17	Resistor, chip, 1/16 W, 1%, 1 kΩ, 0603	STD	STD
0	0	0	0	R19	Resistor, chip, 1/16 W, 1%, 1 kΩ, 0603	STD	STD
2	2	2	2	R14, R18	Resistor, chip, 1/10 W, 5%, 300 Ω, 0805	STD	STD
1	1	1	1	R2	Resistor, chip, 1/16 W, 1%, 22 kΩ, 0603	STD	STD
1	1	0	0	R3	Resistor, chip, 1/16 W, 1%, 75 kΩ, 0603	STD	STD
0	0	0	0	R4	Resistor, metal strip, 0.01 Ohms, 2 W, 1%, 0.01 Ω, 2512	LCR-LRF2512- 01-R010-F	IRC
1	1	1	1	R5	Resistor, power metal strip, 3 W, ±x1%, 0.001 Ω, 4527	WSR-3	Vishay Dale
1	1	1	1	R8	Resistor, chip, 0.5 W, 1%, 499 Ω, 2512	STD	STD
2	2	2	2	R9, R10	Resistor, chip, 1/16 W, 1%, 10 Ω, 0603	Std	Std

⁽¹⁾ These assemblies are ESD sensitive, ESD precautions shall be observed.

⁽²⁾ These assemblies must be clean and free from flux and all contaminants. Use of no clean flux is not acceptable.

⁽³⁾ These assemblies must comply with workmanship standards IPC-A-610 Class 2.

⁽⁴⁾ Ref designators marked with an asterisk (***) cannot be substituted. All other components can be substituted with equivalent MFG's components.

Table 3. List of Materials⁽¹⁾⁽²⁾⁽³⁾⁽⁴⁾ (continued)

-004	-003	-002	-001	REF DES	DESCRIPTION	PART NUMBER	MFR
1	1	1	1	S1	Switch, SPDT, slide, PC mount, 500 mA, 0.400 inch x 0.100 inch	09.03201.02	EAO
14	14	14	14	TP1, TP2, TP3, TP4, TP5, TP6, TP7, TP8, TP9, TP10, TP11, TP12, TP13, TP14	Test point, white, thru hole, 0.125 inch x 0.125 inch	5012	Keystone
0	0	0	1	U1	2.5 V to 20 V Positive Voltage Power-Limiting Hotswap Controller, VSSOP-8	TPS24700DGK	TI
0	0	1	0	U1	2.5 V to 20 V Positive Voltage Power-Limiting Hotswap Controller, VSSOP-8	TPS24701DGK	TI
0	1	0	0	U2	2.5 V to 20 V Positive Voltage Power-Limiting Hotswap Controller, VSSOP-10	TPS24710DGS	TI
1	0	0	0	U2	2.5 to 20 V Positive Voltage Power-Limiting Hotswap Controller, VSSOP-10	TPS24711DGS	TI
1	1	1	1	--	PCB, 4.82 inch x 3.3 inch x 0.062 inch	PCB	Any
4	4	4	4		Bumpers, cylindrical, black	SJ5514-0	3M
4	4	4	4		Screw, panhead	#10-32	0.500 inch
4	4	4	4		Washer, flat	#10	
4	4	4	4		Washer, split	M5	
4	4	4	4		Nut, hex	#10-32	

Evaluation Board/Kit Important Notice

Texas Instruments (TI) provides the enclosed product(s) under the following conditions:

This evaluation board/kit is intended for use for **ENGINEERING DEVELOPMENT, DEMONSTRATION, OR EVALUATION PURPOSES ONLY** and is not considered by TI to be a finished end-product fit for general consumer use. Persons handling the product(s) must have electronics training and observe good engineering practice standards. As such, the goods being provided are not intended to be complete in terms of required design-, marketing-, and/or manufacturing-related protective considerations, including product safety and environmental measures typically found in end products that incorporate such semiconductor components or circuit boards. This evaluation board/kit does not fall within the scope of the European Union directives regarding electromagnetic compatibility, restricted substances (RoHS), recycling (WEEE), FCC, CE or UL, and therefore may not meet the technical requirements of these directives or other related directives.

Should this evaluation board/kit not meet the specifications indicated in the User's Guide, the board/kit may be returned within 30 days from the date of delivery for a full refund. **THE FOREGOING WARRANTY IS THE EXCLUSIVE WARRANTY MADE BY SELLER TO BUYER AND IS IN LIEU OF ALL OTHER WARRANTIES, EXPRESSED, IMPLIED, OR STATUTORY, INCLUDING ANY WARRANTY OF MERCHANTABILITY OR FITNESS FOR ANY PARTICULAR PURPOSE.**

The user assumes all responsibility and liability for proper and safe handling of the goods. Further, the user indemnifies TI from all claims arising from the handling or use of the goods. Due to the open construction of the product, it is the user's responsibility to take any and all appropriate precautions with regard to electrostatic discharge.

EXCEPT TO THE EXTENT OF THE INDEMNITY SET FORTH ABOVE, NEITHER PARTY SHALL BE LIABLE TO THE OTHER FOR ANY INDIRECT, SPECIAL, INCIDENTAL, OR CONSEQUENTIAL DAMAGES.

TI currently deals with a variety of customers for products, and therefore our arrangement with the user **is not exclusive.**

TI assumes **no liability for applications assistance, customer product design, software performance, or infringement of patents or services described herein.**

Please read the User's Guide and, specifically, the Warnings and Restrictions notice in the User's Guide prior to handling the product. This notice contains important safety information about temperatures and voltages. For additional information on TI's environmental and/or safety programs, please contact the TI application engineer or visit www.ti.com/esh.

No license is granted under any patent right or other intellectual property right of TI covering or relating to any machine, process, or combination in which such TI products or services might be or are used.

FCC Warning

This evaluation board/kit is intended for use for **ENGINEERING DEVELOPMENT, DEMONSTRATION, OR EVALUATION PURPOSES ONLY** and is not considered by TI to be a finished end-product fit for general consumer use. It generates, uses, and can radiate radio frequency energy and has not been tested for compliance with the limits of computing devices pursuant to part 15 of FCC rules, which are designed to provide reasonable protection against radio frequency interference. Operation of this equipment in other environments may cause interference with radio communications, in which case the user at his own expense will be required to take whatever measures may be required to correct this interference.

EVM Warnings and Restrictions

It is important to operate this EVM within the input voltage range of 3 V to 20 V and the output voltage range of 3 V to 20 V .

Exceeding the specified input range may cause unexpected operation and/or irreversible damage to the EVM. If there are questions concerning the input range, please contact a TI field representative prior to connecting the input power.

Applying loads outside of the specified output range may result in unintended operation and/or possible permanent damage to the EVM. Please consult the EVM User's Guide prior to connecting any load to the EVM output. If there is uncertainty as to the load specification, please contact a TI field representative.

During normal operation, some circuit components may have case temperatures greater than 50° C. The EVM is designed to operate properly with certain components above 50° C as long as the input and output ranges are maintained. These components include but are not limited to linear regulators, switching transistors, pass transistors, and current sense resistors. These types of devices can be identified using the EVM schematic located in the EVM User's Guide. When placing measurement probes near these devices during operation, please be aware that these devices may be very warm to the touch.

Mailing Address: Texas Instruments, Post Office Box 655303, Dallas, Texas 75265
Copyright © 2011, Texas Instruments Incorporated

IMPORTANT NOTICE

Texas Instruments Incorporated and its subsidiaries (TI) reserve the right to make corrections, modifications, enhancements, improvements, and other changes to its products and services at any time and to discontinue any product or service without notice. Customers should obtain the latest relevant information before placing orders and should verify that such information is current and complete. All products are sold subject to TI's terms and conditions of sale supplied at the time of order acknowledgment.

TI warrants performance of its hardware products to the specifications applicable at the time of sale in accordance with TI's standard warranty. Testing and other quality control techniques are used to the extent TI deems necessary to support this warranty. Except where mandated by government requirements, testing of all parameters of each product is not necessarily performed.

TI assumes no liability for applications assistance or customer product design. Customers are responsible for their products and applications using TI components. To minimize the risks associated with customer products and applications, customers should provide adequate design and operating safeguards.

TI does not warrant or represent that any license, either express or implied, is granted under any TI patent right, copyright, mask work right, or other TI intellectual property right relating to any combination, machine, or process in which TI products or services are used. Information published by TI regarding third-party products or services does not constitute a license from TI to use such products or services or a warranty or endorsement thereof. Use of such information may require a license from a third party under the patents or other intellectual property of the third party, or a license from TI under the patents or other intellectual property of TI.

Reproduction of TI information in TI data books or data sheets is permissible only if reproduction is without alteration and is accompanied by all associated warranties, conditions, limitations, and notices. Reproduction of this information with alteration is an unfair and deceptive business practice. TI is not responsible or liable for such altered documentation. Information of third parties may be subject to additional restrictions.

Resale of TI products or services with statements different from or beyond the parameters stated by TI for that product or service voids all express and any implied warranties for the associated TI product or service and is an unfair and deceptive business practice. TI is not responsible or liable for any such statements.

TI products are not authorized for use in safety-critical applications (such as life support) where a failure of the TI product would reasonably be expected to cause severe personal injury or death, unless officers of the parties have executed an agreement specifically governing such use. Buyers represent that they have all necessary expertise in the safety and regulatory ramifications of their applications, and acknowledge and agree that they are solely responsible for all legal, regulatory and safety-related requirements concerning their products and any use of TI products in such safety-critical applications, notwithstanding any applications-related information or support that may be provided by TI. Further, Buyers must fully indemnify TI and its representatives against any damages arising out of the use of TI products in such safety-critical applications.

TI products are neither designed nor intended for use in military/aerospace applications or environments unless the TI products are specifically designated by TI as military-grade or "enhanced plastic." Only products designated by TI as military-grade meet military specifications. Buyers acknowledge and agree that any such use of TI products which TI has not designated as military-grade is solely at the Buyer's risk, and that they are solely responsible for compliance with all legal and regulatory requirements in connection with such use.

TI products are neither designed nor intended for use in automotive applications or environments unless the specific TI products are designated by TI as compliant with ISO/TS 16949 requirements. Buyers acknowledge and agree that, if they use any non-designated products in automotive applications, TI will not be responsible for any failure to meet such requirements.

Following are URLs where you can obtain information on other Texas Instruments products and application solutions:

Products

Audio	www.ti.com/audio
Amplifiers	amplifier.ti.com
Data Converters	dataconverter.ti.com
DLP® Products	www.dlp.com
DSP	dsp.ti.com
Clocks and Timers	www.ti.com/clocks
Interface	interface.ti.com
Logic	logic.ti.com
Power Mgmt	power.ti.com
Microcontrollers	microcontroller.ti.com
RFID	www.ti-rfid.com
RF/IF and ZigBee® Solutions	www.ti.com/lprf

Applications

Communications and Telecom	www.ti.com/communications
Computers and Peripherals	www.ti.com/computers
Consumer Electronics	www.ti.com/consumer-apps
Energy and Lighting	www.ti.com/energy
Industrial	www.ti.com/industrial
Medical	www.ti.com/medical
Security	www.ti.com/security
Space, Avionics and Defense	www.ti.com/space-avionics-defense
Transportation and Automotive	www.ti.com/automotive
Video and Imaging	www.ti.com/video
Wireless	www.ti.com/wireless-apps

TI E2E Community Home Page

e2e.ti.com

Mailing Address: Texas Instruments, Post Office Box 655303, Dallas, Texas 75265
Copyright © 2011, Texas Instruments Incorporated