

Using the TPS22933AEVM-005 Triple-Input Power Multiplexer with Auto-Select and Integrated LDO

The TPS22933AEVM-005 evaluation module (EVM) allows the user to source up to 50mA from a fixed output Low Drop-Out Regulator (LDO) that is sourced by the highest of three inputs (2.5V to 12V). The EVM has fixed loads for each of the LDO outputs of 1mA and 25mA. The user can also supply an external load.

Contents

1	Description	2
	1.1 Typical Applications	2
	1.2 Features	2
2	Electrical Performance	2
3	Operation	3
	3.1 Equipment	3
	3.2 Recommended Operating Setup	3
	3.3 List of Test Points	4
	3.4 List of Jumper Connections	4
	3.5 Operation Examples	5
4	Operating Procedure	6
5	EVM Layout	7
	5.1 Top Side	7
	5.2 Bottom Side	7
	5.3 Top Assembly	8
6	Schematic and Bill of Materials	8
	6.1 Schematic	8
	6.2 Bill of Materials	8

List of Figures

1	TPS22933AEVM-005 Recommended Operating Set Up	3
2	3-Input MUX with LDO	5
3	3-Input Power MUX	5
4	Voltage Changeover	6
5	CAP Voltage During Switchover	6
6	TPS22933A with Varying Inputs and CAP	6
7	TPS22933A with Varying Inputs and Stable LOU T	6

List of Tables

1	TPS22933A LDO Voltage Options	2
2	TPS22633AEVM-005 Electrical Performance	2
3	The Functions of Each Test Points	4
4	Jumper Settings	4

1 Description

The TPS22933AEVM-001 evaluation module helps designers evaluate the operation and performance of the TPS22933A triple-input multiplexer with LDO. The board features the small 8-pin μ QFN package for a small solution size. The TPS22933A LDO has one always on output (LOUT) and one switched output (VOOUT). VOOUT is enabled through the EN pin. When VOOUT is disabled, the internal quick output discharge FET (QOD) is enabled to drain any residual voltage from the output.

Table 1. TPS22933A LDO Voltage Options⁽¹⁾

EVM	Device	LOUT (V)
HVL005	TPS22933A	3.6 V

⁽¹⁾ Contact Factory for additional LDO output options.

1.1 Typical Applications

- Hand-held devices with multiple input sources (such as a battery, a USB port and a DC In jack).

1.2 Features

- Three integrated load switches automatically choose highest input
- Integrated 3.6V fixed LDO (contact factory for other LDO voltages)
- Switched and Always on LDO outputs
- Small μ QFN package (1.5mm x 1.5mm)
- Input voltage range 2.5V to 12V
- Low ON-resistance (2.4 Ω at 5V)
- 50mA max continuous current (split between LOOUT and VOOUT)
- Low threshold control input (EN)
- Switchover time 18 μ s typical
- Switchover voltage 150mV typical

2 Electrical Performance

Table 2. TPS22633AEVM-005 Electrical Performance

PARAMETER	TEST CONDITIONS ⁽¹⁾	MIN	TYP	MAX	UNITS
Input Characteristics					
Voltage range		2.5		12	V
Maximum input current				50	mA
Electrical Characteristics					
Output voltage, LOOUT	$I_{LOOUT} = 10 \text{ mA}$, $V_{IN} = 4.2 \text{ V}$		3.6		V
Output voltage, VOOUT	$I_{VOOUT} = 10 \text{ mA}$, $V_{IN} = 4.2 \text{ V}$		3.6		V
ON resistance (Input to CAP)	$V_{IN} = 5.0 \text{ V}$, $I_{OOUT} = 10 \text{ mA}$		2.4		Ω
ON resistance (LDO to VOOUT)	$I_{OOUT} = 10 \text{ mA}$		1.3		Ω
Pull-down resistance (VOOUT to GND)	$EN = 0 \text{ V}$		63.8		Ω
Systems Characteristics					
Switching Time			18		μ s
Switching Voltage	$V_{BAT} = 4.2 \text{ V}$, V_{USB} rising from 4 V to 5 V		150		mV

⁽¹⁾ V_{IN} = highest of BAT, USB, DC_IN

3 Operation

3.1 Equipment

- **Voltage Sources:**
 - Three supplies capable of supplying 12V at 100mA are recommended.
 - Supply capable of ramping voltages (function generators may be useful) can be used to measure changeover times and voltages.
 - EN can be tied high or low on the EVM. It can also be driven by an external source.
- **Multimeters:**
 - One to three meters can be used to measure voltages (commonly CAP, LOUT and VOUT).
 - One or two ammeters may be useful for measuring currents (commonly I_{LOUT} and I_{VOUT}).
- **Output Load:**
 - The EVM comes with jumpers to allow 1mA and 25mA loads on each output (LOUT and VOUT).
 - Custom loads can be used by removing the EVM jumpers and using TP8 for the always on LDO output (LOUT) and TP10 for the switched LDO output (VOUT). Any of the ground test point can be used (TP14, TP15, TP16, TP17).
- **Oscilloscope:**
 - 4 channel 100MHz to monitor input supplies, EN, CAP, LOUT and VOUT as needed.
- **Recommended Wire Gauge:**
 - 22 AWG

3.2 Recommended Operating Setup

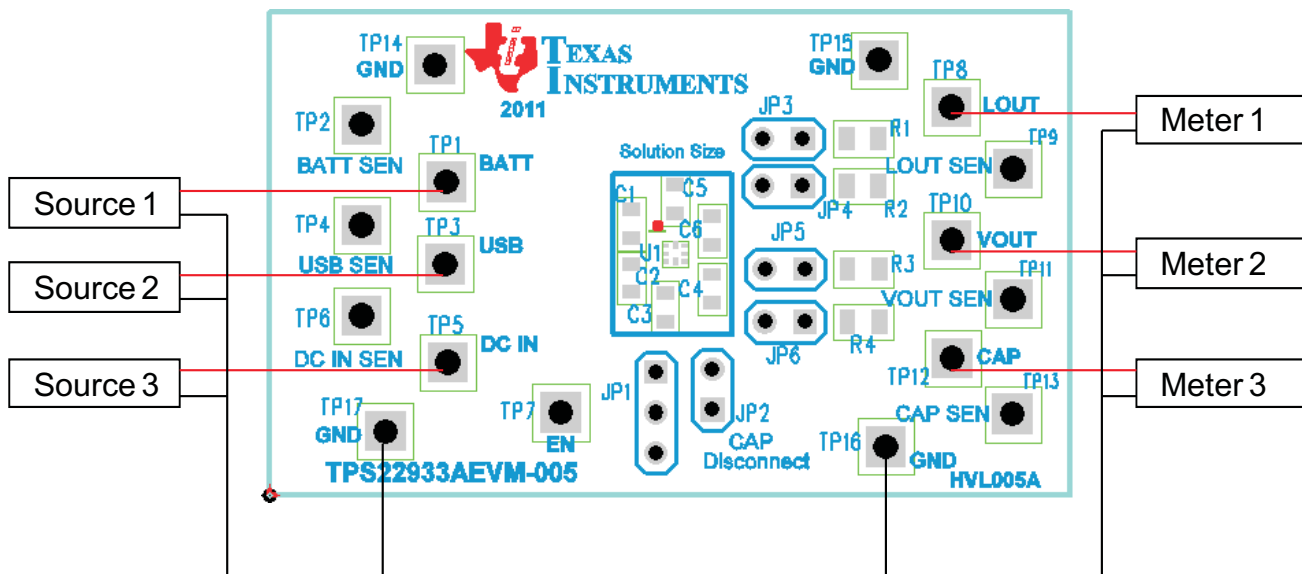


Figure 1. TPS22933AEVM-005 Recommended Operating Set Up

3.3 List of Test Points

Table 3. The Functions of Each Test Points

Test Points	Name	Description
TP1	BATT	Input for BAT pin
TP2	BATT SEN	BAT pin sense
TP3	USB	Input for USB pin
TP4	USB SEN	USB pin sense
TP5	DC_IN	Input for DC_IN pin
TP6	DC IN SEN	DC_IN pin sense
TP7	EN	Enable pin force or measure
TP8	LOUT	Connection for LOUT load
TP9	LOUT SEN	LOUT pin sense
TP10	VOUT	Connection for VOUT load
TP11	VOUT SEN	VOUT pin sense
TP12	CAP	CAP pin measurement point
TP13	CAP SEN	CAP pin sense
TP14	GND	Ground Connection
TP15	GND	Ground Connection
TP16	GND	Ground Connection
TP17	GND	Ground Connection

3.4 List of Jumper Connections

Jumper JP1 is a two position Jumper to allow EN to be tied Low (2:3), High (1:2) or driven externally by tying pin 2 to a function generator or microcontroller.

Table 4. Jumper Settings

Jumpers	Jumper Not Installed	Jumper Installed
JP1	External Signal for EN	(1:2) – High, (2:3) – Low
JP2	No Capacitor from CAP to GND	1 nF capacitor between CAP and GND
JP3	—	1 mA load added to LOUT
JP4	—	25 mA load added to LOUT
JP5	—	1 mA load added to VOUT
JP6	—	25 mA load added to VOUT

3.5 Operation Examples

The TPS22933A allows for much flexibility in a variety of applications and the EVM can be used to demonstrate its flexibility.

Application Examples:

3.5.1 Application Examples:

3.5.1.1 3-Input Multiplexer with Always On and Switched LDO

This example shows the most common use of the TPS22933A. Any handheld device might have three input sources: Lithium battery, USB port and a DC jack. Once power is applied to any of the inputs, the TPS22933A powers up the LDO and the MSP430 microcontroller is powered through the LOUT pin. At this point, the MSP430 may decide to enable the VOUT to supply current to a subsystem – or, it may wait until the specific functionality is required and power it then.

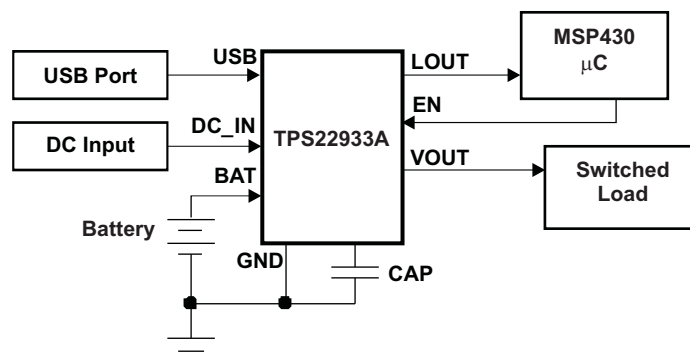


Figure 2. 3-Input MUX with LDO

3.5.1.2 3-Input Multiplexer with LDO Unused

This example shows the TPS22933A used solely as a 3-input multiplexer with the LDO left unused. The CAP pin is used as the output of the multiplexer. Since the CAP is simply the highest of the three inputs, the CAP pin will be as high as the input supply (minus the drop across the input switch). In this use in particular the user needs to keep in mind that the voltage picker has a 150mV (typical) switchover point. With a 2.4Ω R_{ON}, the maximum current would be limited by not only the power dissipation, but also by the switchover voltage. For 150mV and 2.4 Ω, a current of 62.5mA may result in a switch between supplies of equal voltage.

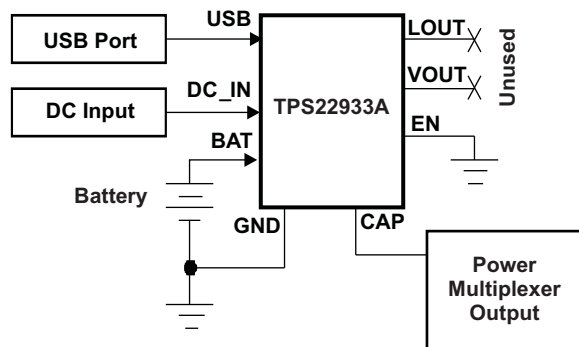


Figure 3. 3-Input Power MUX

4 Operating Procedure

The TPS22933A will select the highest input voltage from BAT, USB and DC_IN to source the LDO. The CAP pin can be used to monitor the selection process. As one input pin becomes higher (typically 150mV) than the input currently driving the LDO, that input is selected to source the LDO. The CAP pin will change from the original voltage to the new higher voltage. [Figure 4](#) and [Figure 5](#) show examples of the transfer in LDO sourcing.

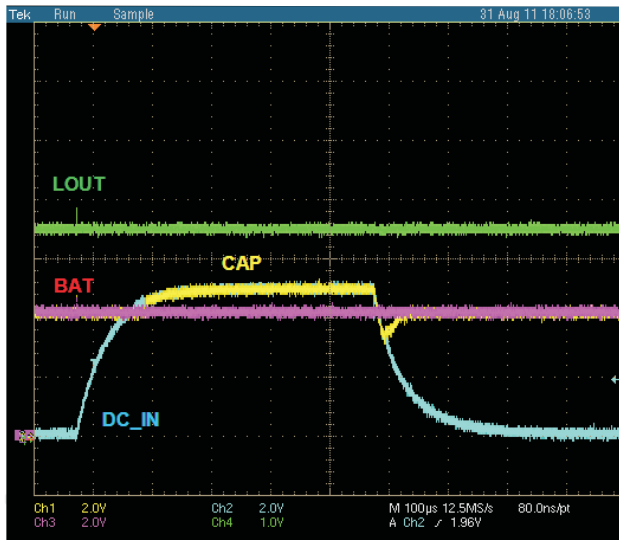


Figure 4. Voltage Changeover

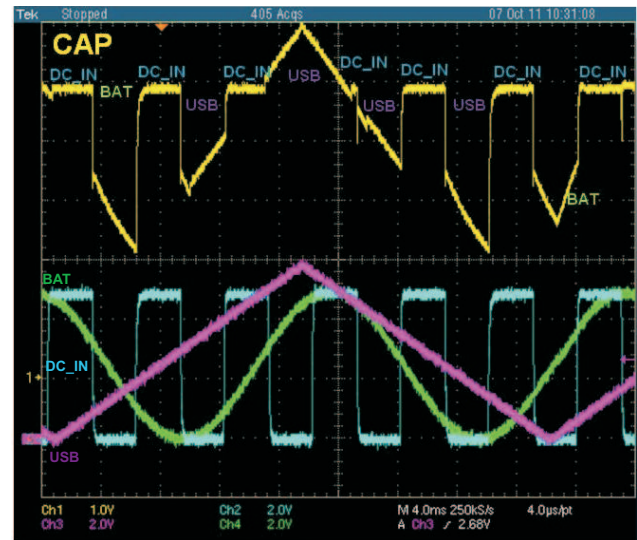


Figure 5. CAP Voltage During Switchover

[Figure 4](#) shows the BAT pin (4.2V) controlling the LDO until the DC_IN supply overtakes the BAT voltage on its way to 5V. The CAP pin follows DC_IN up to 5V. As the DC_IN pin falls below BAT, the CAP pin goes back to the BAT voltage. Note that LOUT (at 3.6V) is unaffected by the changeover.



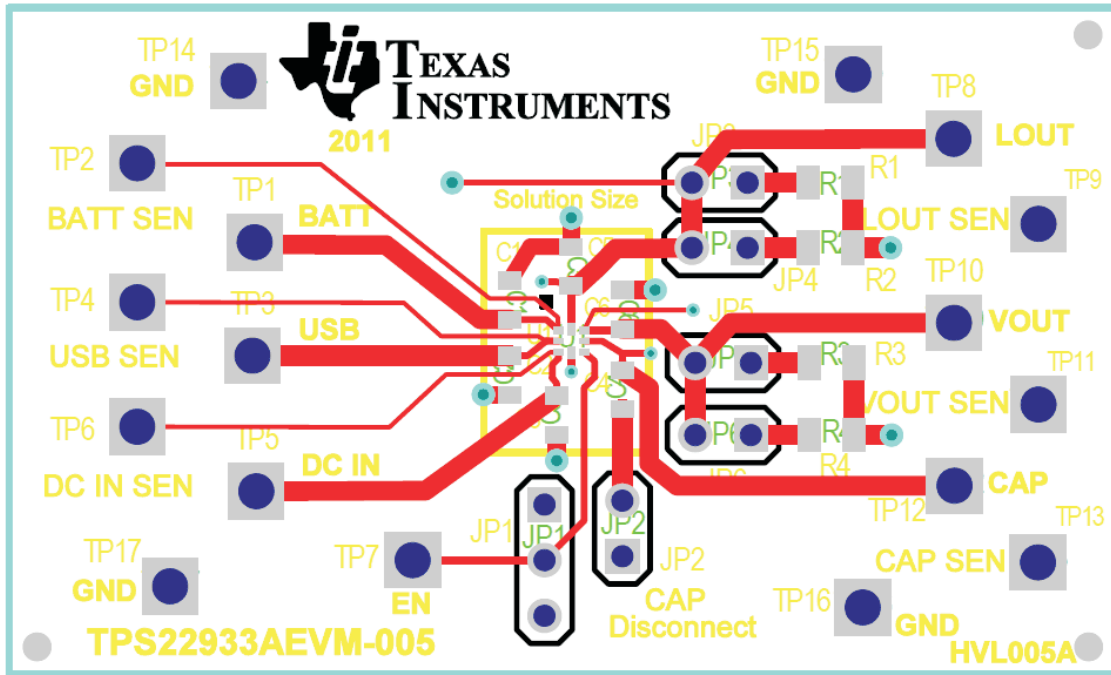
Figure 6. TPS22933A with Varying Inputs and CAP



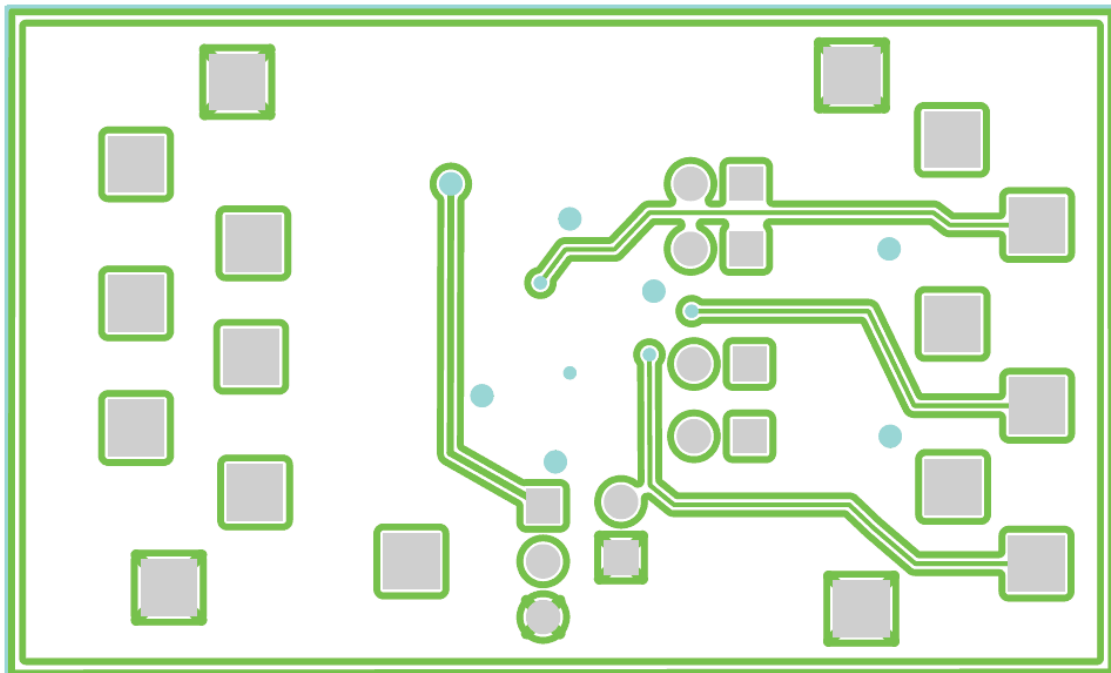
Figure 7. TPS22933A with Varying Inputs and Stable LOUT

5 EVM Layout

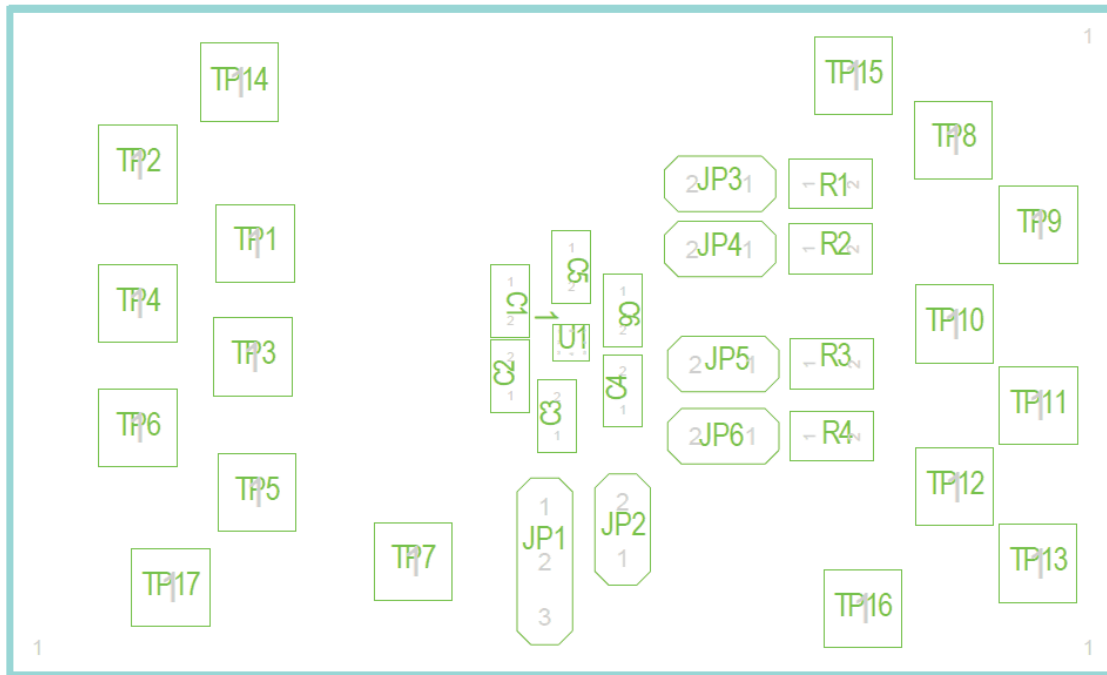
5.1 Top Side



5.2 Bottom Side

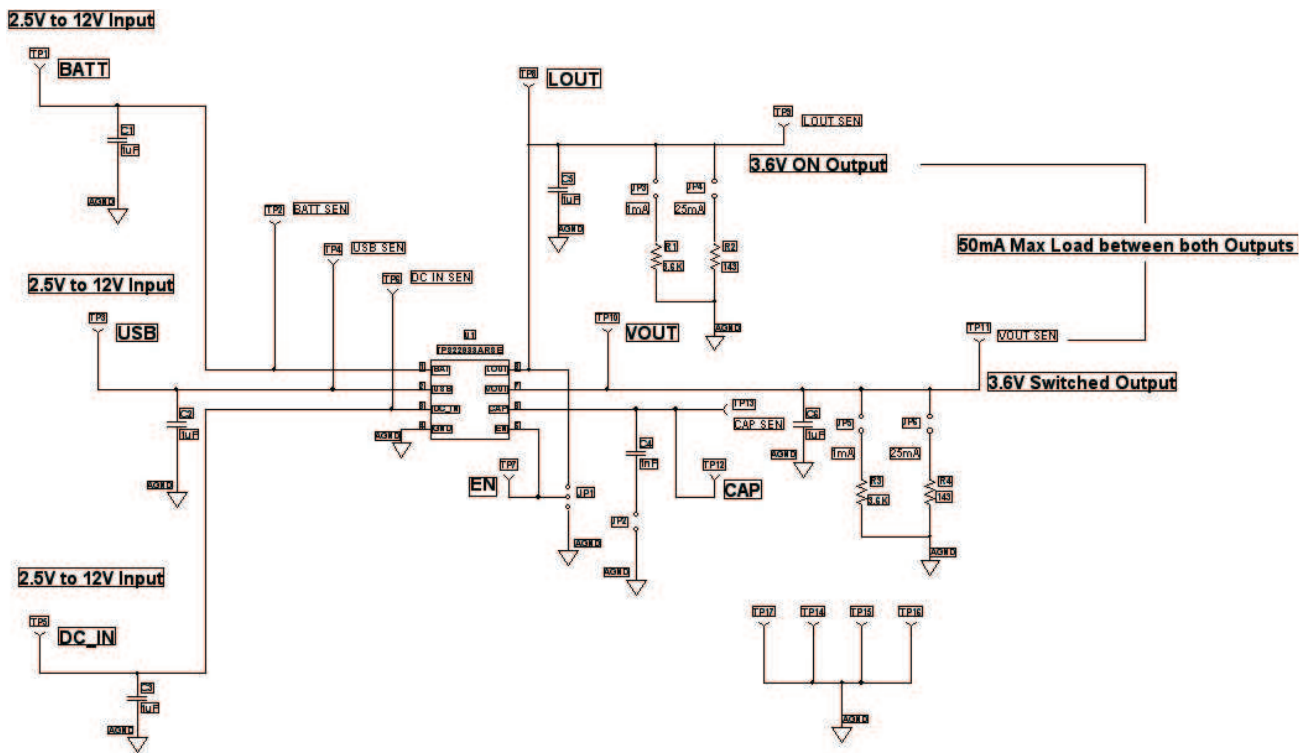


5.3 Top Assembly



6 Schematic and Bill of Materials

6.1 Schematic



6.2 Bill of Materials

Count	Reference Designator	Value	Description	SIZE	Part Number	MFR
1	--		PCB, 1.2" x 2.0" x 0.062"		HVL005	Any
1	C4	1000pF	Capacitor, Ceramic, 25-V, NPO,5%	603	Std	Std
5	C1-C3, C5-C6	1uF	Capacitor, Ceramic, 25-V, X5R,10%	603	Std	Std
2	R1,R3	3.6K	Resistor, Chip 1/8W 5%	805	Std	Std
2	R2,R4	143	Resistor, Chip 1/8W 1%	805	Std	Std
5	JP2-JP6	PEC02SAAN	Header,2pin, 100mil spacing	0.100 inch x 2	PEC02SAAN	Sullins
1	JP1	PEC03SAAN	Header,3pin, 100mil spacing	0.100 inch x 3	PEC03SAAN	Sullins
1	U1	TPS22933ARSE	IC, Single Chip, Triple Load Switch w/ integrated LDO	RSE	TPS22933ARSE	TI
6	TP1, TP3, TP5, TP9, TP11, TP13	5012	Test Point PC Multipurpose WHT	0.063" (1.60mm) Hole Diameter	5012	Keystone
6	TP2, TP4, TP6, TP8, TP10, TP12	5014	Test Point PC Multipurpose YLW	0.063" (1.60mm) Hole Diameter	5014	Keystone
4	TP14-TP17	5011	Test Point PC Multipurpose BLK	0.063" (1.60mm) Hole Diameter	5011	Keystone
1	TP7	5010	Test Point PC Multipurpose RED	0.063" (1.60mm) Hole Diameter	5010	Keystone
3	NA	NA	Shunt, 100-mil, Black	0.100	929950-00	3M

Evaluation Board/Kit Important Notice

Texas Instruments (TI) provides the enclosed product(s) under the following conditions:

This evaluation board/kit is intended for use for **ENGINEERING DEVELOPMENT, DEMONSTRATION, OR EVALUATION PURPOSES ONLY** and is not considered by TI to be a finished end-product fit for general consumer use. Persons handling the product(s) must have electronics training and observe good engineering practice standards. As such, the goods being provided are not intended to be complete in terms of required design-, marketing-, and/or manufacturing-related protective considerations, including product safety and environmental measures typically found in end products that incorporate such semiconductor components or circuit boards. This evaluation board/kit does not fall within the scope of the European Union directives regarding electromagnetic compatibility, restricted substances (RoHS), recycling (WEEE), FCC, CE or UL, and therefore may not meet the technical requirements of these directives or other related directives.

Should this evaluation board/kit not meet the specifications indicated in the User's Guide, the board/kit may be returned within 30 days from the date of delivery for a full refund. **THE FOREGOING WARRANTY IS THE EXCLUSIVE WARRANTY MADE BY SELLER TO BUYER AND IS IN LIEU OF ALL OTHER WARRANTIES, EXPRESSED, IMPLIED, OR STATUTORY, INCLUDING ANY WARRANTY OF MERCHANTABILITY OR FITNESS FOR ANY PARTICULAR PURPOSE.**

The user assumes all responsibility and liability for proper and safe handling of the goods. Further, the user indemnifies TI from all claims arising from the handling or use of the goods. Due to the open construction of the product, it is the user's responsibility to take any and all appropriate precautions with regard to electrostatic discharge.

EXCEPT TO THE EXTENT OF THE INDEMNITY SET FORTH ABOVE, NEITHER PARTY SHALL BE LIABLE TO THE OTHER FOR ANY INDIRECT, SPECIAL, INCIDENTAL, OR CONSEQUENTIAL DAMAGES.

TI currently deals with a variety of customers for products, and therefore our arrangement with the user **is not exclusive.**

TI assumes **no liability for applications assistance, customer product design, software performance, or infringement of patents or services described herein.**

Please read the User's Guide and, specifically, the Warnings and Restrictions notice in the User's Guide prior to handling the product. This notice contains important safety information about temperatures and voltages. For additional information on TI's environmental and/or safety programs, please contact the TI application engineer or visit www.ti.com/esh.

No license is granted under any patent right or other intellectual property right of TI covering or relating to any machine, process, or combination in which such TI products or services might be or are used.

FCC Warning

This evaluation board/kit is intended for use for **ENGINEERING DEVELOPMENT, DEMONSTRATION, OR EVALUATION PURPOSES ONLY** and is not considered by TI to be a finished end-product fit for general consumer use. It generates, uses, and can radiate radio frequency energy and has not been tested for compliance with the limits of computing devices pursuant to part 15 of FCC rules, which are designed to provide reasonable protection against radio frequency interference. Operation of this equipment in other environments may cause interference with radio communications, in which case the user at his own expense will be required to take whatever measures may be required to correct this interference.

EVM Warnings and Restrictions

It is important to operate this EVM within the input voltage range of 0 V to 14 V and the output voltage range of 3 V to 5 V .

Exceeding the specified input range may cause unexpected operation and/or irreversible damage to the EVM. If there are questions concerning the input range, please contact a TI field representative prior to connecting the input power.

Applying loads outside of the specified output range may result in unintended operation and/or possible permanent damage to the EVM. Please consult the EVM User's Guide prior to connecting any load to the EVM output. If there is uncertainty as to the load specification, please contact a TI field representative.

During normal operation, some circuit components may have case temperatures greater than 50° C. The EVM is designed to operate properly with certain components above 50° C as long as the input and output ranges are maintained. These components include but are not limited to linear regulators, switching transistors, pass transistors, and current sense resistors. These types of devices can be identified using the EVM schematic located in the EVM User's Guide. When placing measurement probes near these devices during operation, please be aware that these devices may be very warm to the touch.

Mailing Address: Texas Instruments, Post Office Box 655303, Dallas, Texas 75265
Copyright © 2011, Texas Instruments Incorporated

IMPORTANT NOTICE

Texas Instruments Incorporated and its subsidiaries (TI) reserve the right to make corrections, modifications, enhancements, improvements, and other changes to its products and services at any time and to discontinue any product or service without notice. Customers should obtain the latest relevant information before placing orders and should verify that such information is current and complete. All products are sold subject to TI's terms and conditions of sale supplied at the time of order acknowledgment.

TI warrants performance of its hardware products to the specifications applicable at the time of sale in accordance with TI's standard warranty. Testing and other quality control techniques are used to the extent TI deems necessary to support this warranty. Except where mandated by government requirements, testing of all parameters of each product is not necessarily performed.

TI assumes no liability for applications assistance or customer product design. Customers are responsible for their products and applications using TI components. To minimize the risks associated with customer products and applications, customers should provide adequate design and operating safeguards.

TI does not warrant or represent that any license, either express or implied, is granted under any TI patent right, copyright, mask work right, or other TI intellectual property right relating to any combination, machine, or process in which TI products or services are used. Information published by TI regarding third-party products or services does not constitute a license from TI to use such products or services or a warranty or endorsement thereof. Use of such information may require a license from a third party under the patents or other intellectual property of the third party, or a license from TI under the patents or other intellectual property of TI.

Reproduction of TI information in TI data books or data sheets is permissible only if reproduction is without alteration and is accompanied by all associated warranties, conditions, limitations, and notices. Reproduction of this information with alteration is an unfair and deceptive business practice. TI is not responsible or liable for such altered documentation. Information of third parties may be subject to additional restrictions.

Resale of TI products or services with statements different from or beyond the parameters stated by TI for that product or service voids all express and any implied warranties for the associated TI product or service and is an unfair and deceptive business practice. TI is not responsible or liable for any such statements.

TI products are not authorized for use in safety-critical applications (such as life support) where a failure of the TI product would reasonably be expected to cause severe personal injury or death, unless officers of the parties have executed an agreement specifically governing such use. Buyers represent that they have all necessary expertise in the safety and regulatory ramifications of their applications, and acknowledge and agree that they are solely responsible for all legal, regulatory and safety-related requirements concerning their products and any use of TI products in such safety-critical applications, notwithstanding any applications-related information or support that may be provided by TI. Further, Buyers must fully indemnify TI and its representatives against any damages arising out of the use of TI products in such safety-critical applications.

TI products are neither designed nor intended for use in military/aerospace applications or environments unless the TI products are specifically designated by TI as military-grade or "enhanced plastic." Only products designated by TI as military-grade meet military specifications. Buyers acknowledge and agree that any such use of TI products which TI has not designated as military-grade is solely at the Buyer's risk, and that they are solely responsible for compliance with all legal and regulatory requirements in connection with such use.

TI products are neither designed nor intended for use in automotive applications or environments unless the specific TI products are designated by TI as compliant with ISO/TS 16949 requirements. Buyers acknowledge and agree that, if they use any non-designated products in automotive applications, TI will not be responsible for any failure to meet such requirements.

Following are URLs where you can obtain information on other Texas Instruments products and application solutions:

Products

Audio	www.ti.com/audio
Amplifiers	amplifier.ti.com
Data Converters	dataconverter.ti.com
DLP® Products	www.dlp.com
DSP	dsp.ti.com
Clocks and Timers	www.ti.com/clocks
Interface	interface.ti.com
Logic	logic.ti.com
Power Mgmt	power.ti.com
Microcontrollers	microcontroller.ti.com
RFID	www.ti-rfid.com
OMAP Mobile Processors	www.ti.com/omap
Wireless Connectivity	www.ti.com/wirelessconnectivity

Applications

Communications and Telecom	www.ti.com/communications
Computers and Peripherals	www.ti.com/computers
Consumer Electronics	www.ti.com/consumer-apps
Energy and Lighting	www.ti.com/energy
Industrial	www.ti.com/industrial
Medical	www.ti.com/medical
Security	www.ti.com/security
Space, Avionics and Defense	www.ti.com/space-avionics-defense
Transportation and Automotive	www.ti.com/automotive
Video and Imaging	www.ti.com/video

TI E2E Community Home Page

e2e.ti.com

Mailing Address: Texas Instruments, Post Office Box 655303, Dallas, Texas 75265
Copyright © 2011, Texas Instruments Incorporated