

# LM2736

*Application Note 1418 LM2736 Evaluation Board*



Literature Number: SNVA135

# LM2736 Evaluation Board

National Semiconductor  
Application Note 1418  
Maurice Eaglin  
October 2005



## Introduction

The LM2736 demo board is configured to convert 5V input to 1.5V output at 750 mA load current using the LM2736X 1.6 MHz or the LM2736Y 550 kHz step down DC-DC regulator. The tiny low profile thin SOT23 package allows the demo board to be manufactured using less than 1 square inch of a 4-layer printed circuit board.

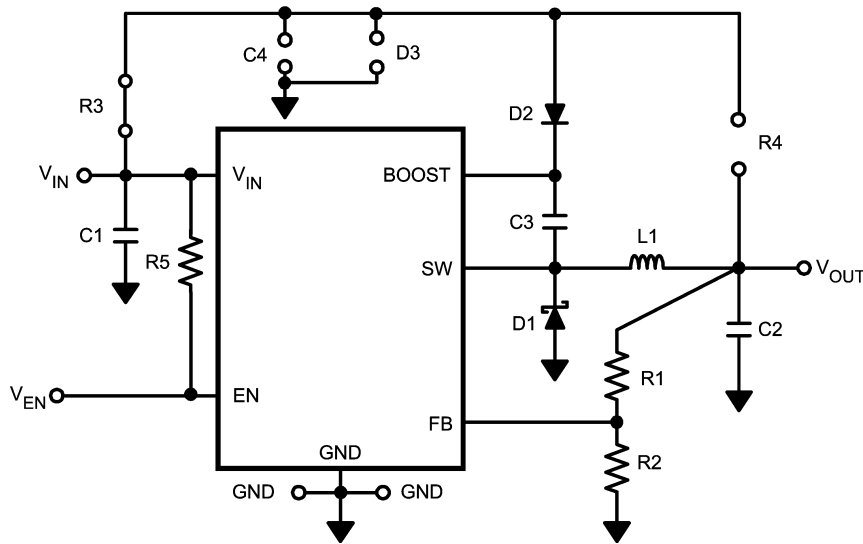
The circuit is configured with the boost diode connected to  $V_{IN}$ , and according to the datasheet,  $V_{IN}$  must not exceed the maximum operating limit of  $5.5V + V_{ID2}$  using this configuration. This will ensure that the voltage between the Boost and SW pins,  $V_{BOOST} - V_{SW}$ , does not exceed 5.5V for proper operation. Please see the LM2736 datasheet for more information regarding this requirement.

A bill of materials below describes the parts used on this demo board. A schematic and layout have also been in-

cluded below along with measured performance characteristics. The schematics at the end of this document show how to re-configure this demo board for various input and output conditions as discussed in the LM2736 datasheet. Short or leave open the indicated connection as indicated in the schematics. The above restrictions for the input voltage are valid only for the demo board as shipped with the demo board schematic below.

## Operating Conditions

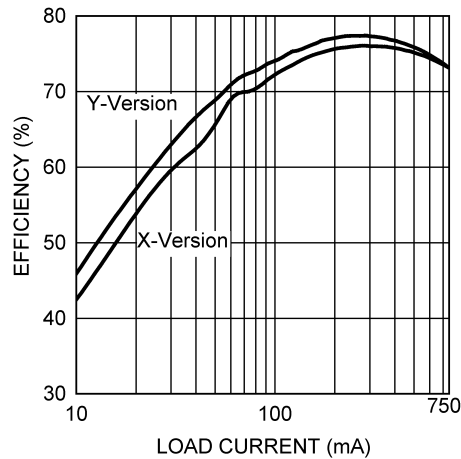
$V_{IN} = 5V$   
 $V_O = 1.5V$   
 $I_O = 750\text{ mA}$



LM2736 Demo Board Schematic

20170901

## Operating Conditions (Continued)



20170902

Efficiency vs Load Current

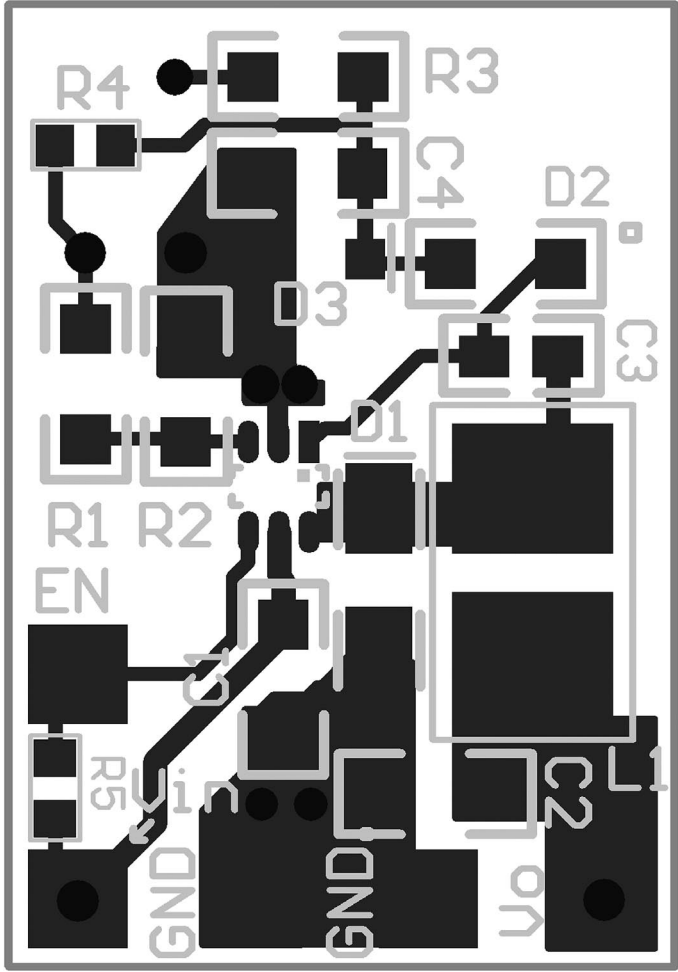
### Bill of Materials X-Version

Part ID	Part Value	Manufacturer	Part Number	Package Type
C1, Input Cap	4.7 $\mu$ F, 10V, X5R	Murata	GRM42-6X5R475K10	1206
C2, Output Cap	10 $\mu$ F, 6.3V, X5R	Murata	GRM42-6X5R106K6.3	1206
C3, Boost Cap	0.01 $\mu$ F	Vishay	VJ1206Y103KXXA	1206
D2, Boost Diode	1V <sub>f</sub> @ 50 mA Diode	Diodes, Inc.	1N4148W	SOD-123
R2	10 k $\Omega$ , 1%	Vishay	CRCW12061002F	1206
U1	750 mA Buck Regulator	National Semiconductor	LM2736X	Thin SOT23-6
D1, Catch Diode	0.34V <sub>f</sub> Schottky 1A, 20V <sub>R</sub>	International Rectifier	MBRA120	SMA
L1	4.7 $\mu$ H, 1.6A, 28 m $\Omega$	TDK	SLF6028T-4R7M1R6	6028
R1	2 k $\Omega$ , 1%	Vishay	CRCW12062001F	1206
R3	0 $\Omega$	Vishay	CRCW12060000F	1206
R5	50 k $\Omega$ , 1%	Vishay	CRCW08055002F	0805
D3, C4, R4	Open			

### Bill of Materials Y-Version

Part ID	Part Value	Manufacturer	Part Number	Package Type
C1, Input Cap	10 $\mu$ F, 10V, X5R	Murata	GRM42-6X5R106K10	1206
C2, Output Cap	10 $\mu$ F, 6.3V, X5R	Murata	GRM42-6X5R106K6.3	1206
C3, Boost Cap	0.01 $\mu$ F	Vishay	VJ1206Y103KXXA	1206
D2, Boost Diode	1V <sub>f</sub> @ 50 mA Diode	Diodes, Inc.	1N4148W	SOD-123
R2	10 k $\Omega$ , 1%	Vishay	CRCW12061002F	1206
U1	750 mA Buck Regulator	National Semiconductor	LM2736Y	Thin SOT23-6
D1, Catch Diode	0.34V <sub>f</sub> Schottky 1A, 20V <sub>R</sub>	International Rectifier	MBRA120	SMA
L1	10 $\mu$ H, 1.3A, 53 m $\Omega$	TDK	SLF6028T-100M1R3	6028
R1	2 k $\Omega$ , 1%	Vishay	CRCW12062001F	1206
R3	0 $\Omega$	Vishay	CRCW12060000F	1206
R5	50 k $\Omega$ , 1%	Vishay	CRCW08055002F	0805
D3, C4, R4	Open			

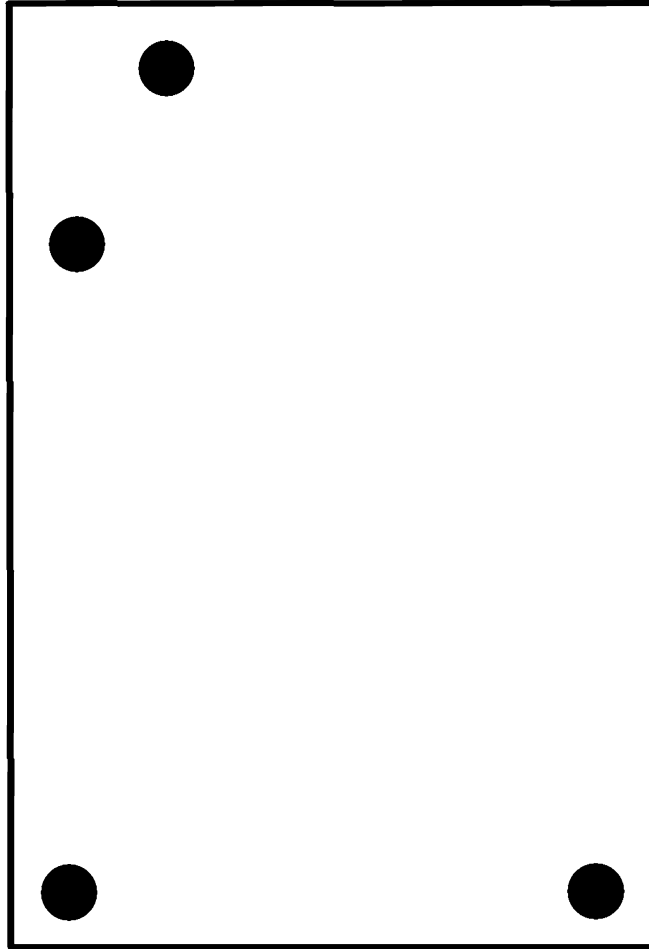
# PCB Layout



20170903

Top Layer

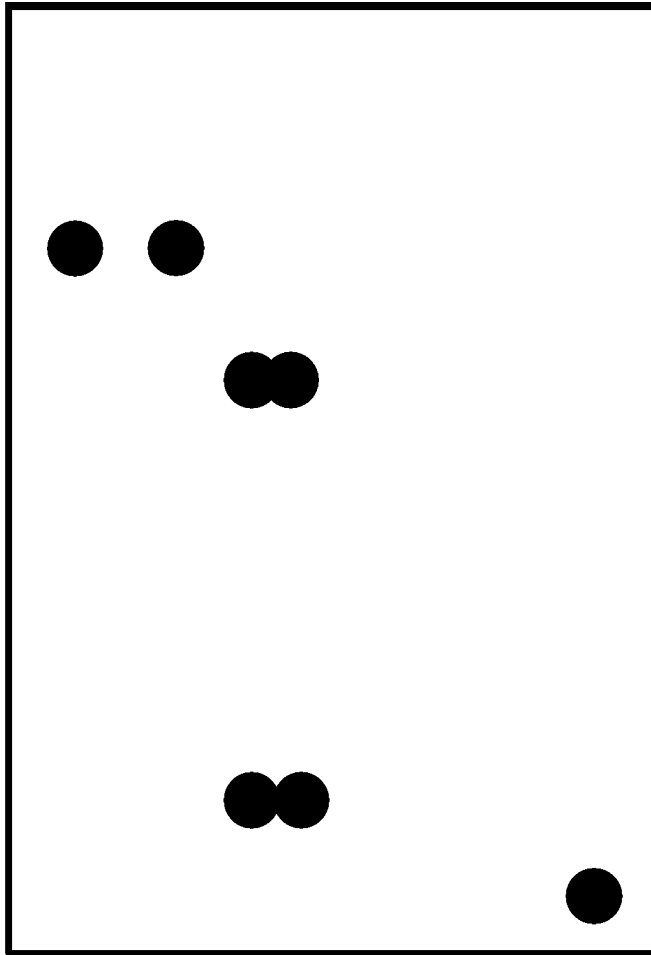
**PCB Layout** (Continued)



Internal Plane 1 (GND)

20170904

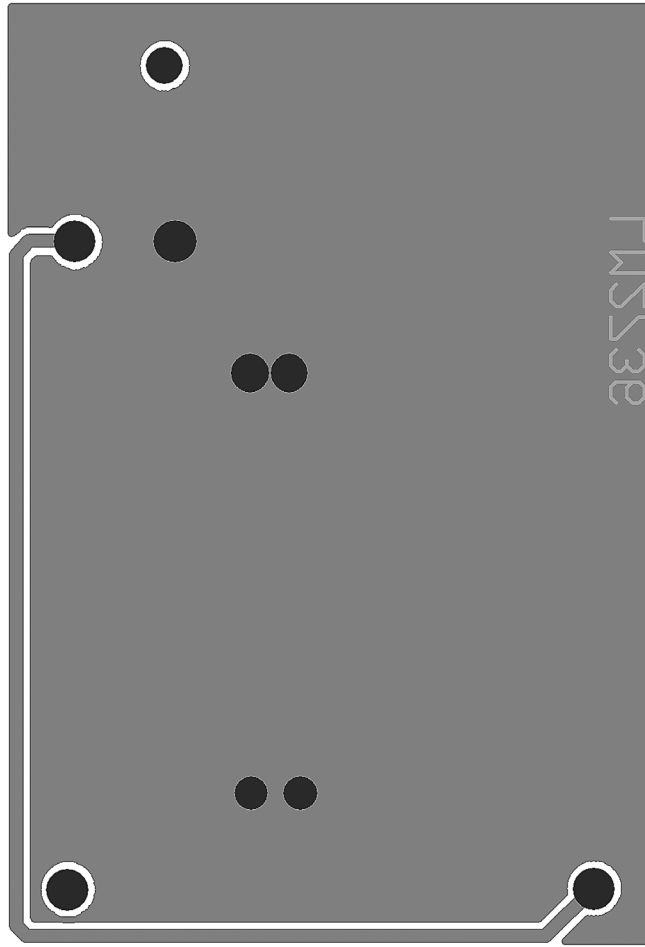
PCB Layout (Continued)



20170905

Internal Plane 2 ( $V_{IN}$ )

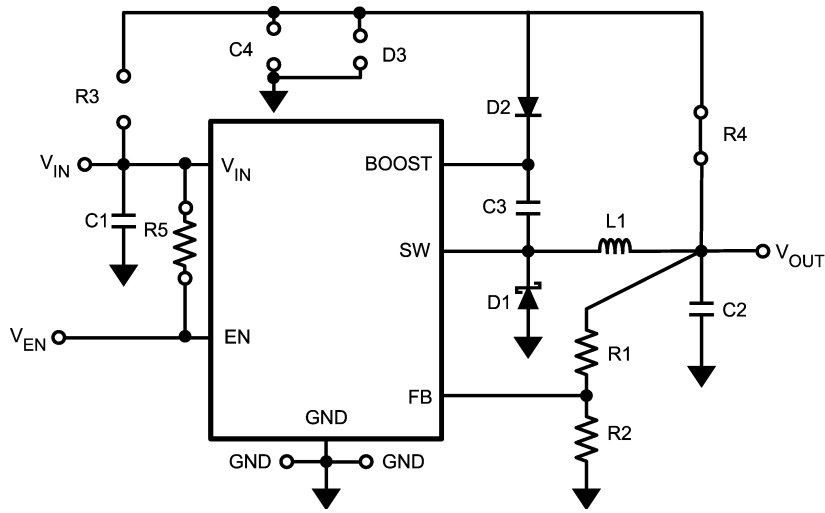
# PCB Layout (Continued)



Bottom Layer

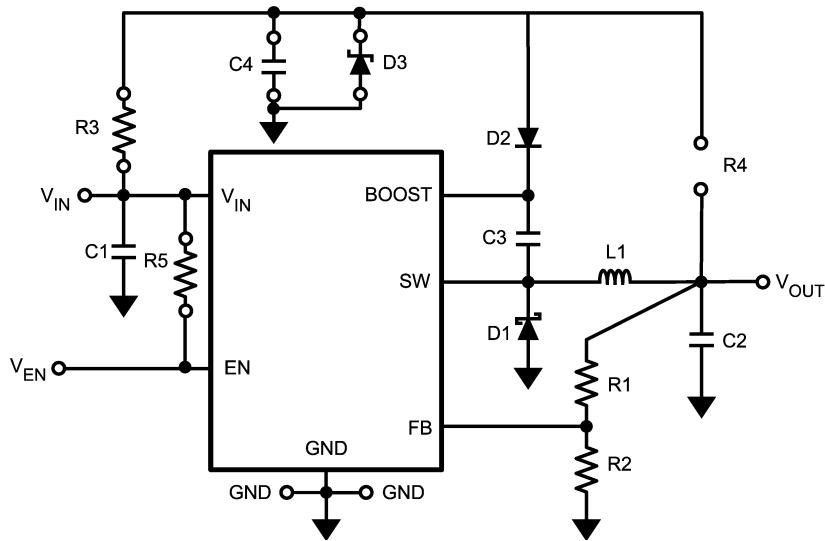
20170906

### Additional Circuit Configuration Schematics



20170907

**V<sub>BOOST</sub> Derived from V<sub>OUT</sub>**

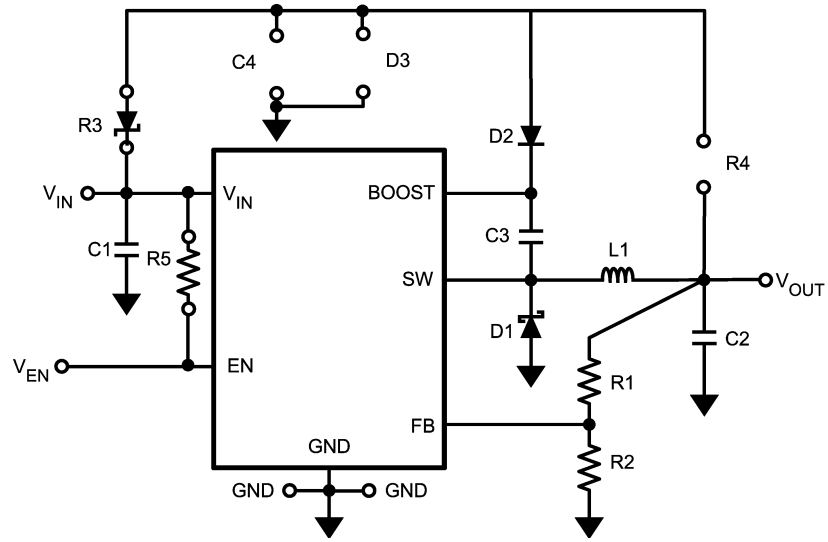


20170908

**V<sub>BOOST</sub> Derived from V<sub>SHUNT</sub>**

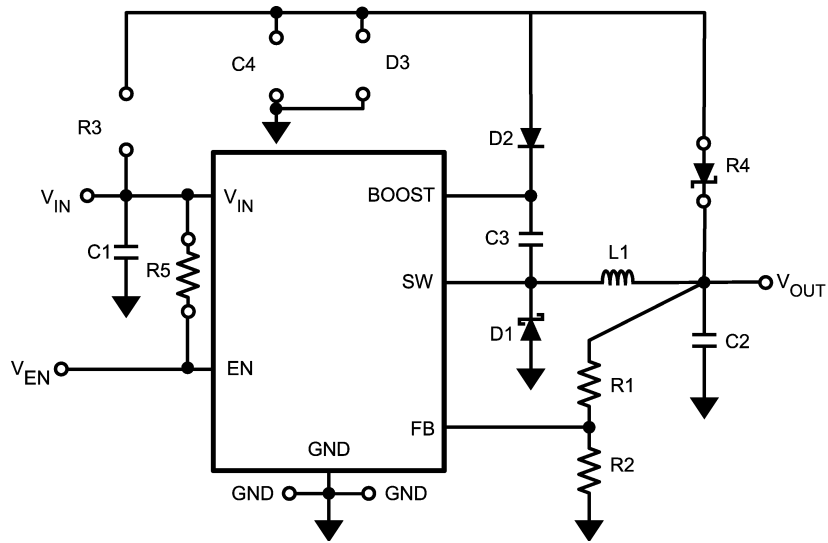


**Additional Circuit Configuration Schematics** (Continued)



20170909

$V_{BOOST}$  Derived from Series Zener Diode ( $V_{IN}$ )



20170910

$V_{BOOST}$  Derived from Series Zener Diode ( $V_{OUT}$ )

## Notes

National does not assume any responsibility for use of any circuitry described, no circuit patent licenses are implied and National reserves the right at any time without notice to change said circuitry and specifications.

For the most current product information visit us at [www.national.com](http://www.national.com).

### LIFE SUPPORT POLICY

NATIONAL'S PRODUCTS ARE NOT AUTHORIZED FOR USE AS CRITICAL COMPONENTS IN LIFE SUPPORT DEVICES OR SYSTEMS WITHOUT THE EXPRESS WRITTEN APPROVAL OF THE PRESIDENT AND GENERAL COUNSEL OF NATIONAL SEMICONDUCTOR CORPORATION. As used herein:

1. Life support devices or systems are devices or systems which, (a) are intended for surgical implant into the body, or (b) support or sustain life, and whose failure to perform when properly used in accordance with instructions for use provided in the labeling, can be reasonably expected to result in a significant injury to the user.
2. A critical component is any component of a life support device or system whose failure to perform can be reasonably expected to cause the failure of the life support device or system, or to affect its safety or effectiveness.

### BANNED SUBSTANCE COMPLIANCE

National Semiconductor manufactures products and uses packing materials that meet the provisions of the Customer Products Stewardship Specification (CSP-9-111C2) and the Banned Substances and Materials of Interest Specification (CSP-9-111S2) and contain no "Banned Substances" as defined in CSP-9-111S2.

Leadfree products are RoHS compliant.



**National Semiconductor**  
Americas Customer  
Support Center  
Email: [new.feedback@nsc.com](mailto:new.feedback@nsc.com)  
Tel: 1-800-272-9959

[www.national.com](http://www.national.com)

**National Semiconductor**  
Europe Customer Support Center  
Fax: +49 (0) 180-530 85 86  
Email: [europe.support@nsc.com](mailto:europe.support@nsc.com)  
Deutsch Tel: +49 (0) 69 9508 6208  
English Tel: +44 (0) 870 24 0 2171  
Français Tel: +33 (0) 1 41 91 8790

**National Semiconductor**  
Asia Pacific Customer  
Support Center  
Email: [ap.support@nsc.com](mailto:ap.support@nsc.com)

**National Semiconductor**  
Japan Customer Support Center  
Fax: 81-3-5639-7507  
Email: [jpn.feedback@nsc.com](mailto:jpn.feedback@nsc.com)  
Tel: 81-3-5639-7560

## IMPORTANT NOTICE

Texas Instruments Incorporated and its subsidiaries (TI) reserve the right to make corrections, modifications, enhancements, improvements, and other changes to its products and services at any time and to discontinue any product or service without notice. Customers should obtain the latest relevant information before placing orders and should verify that such information is current and complete. All products are sold subject to TI's terms and conditions of sale supplied at the time of order acknowledgment.

TI warrants performance of its hardware products to the specifications applicable at the time of sale in accordance with TI's standard warranty. Testing and other quality control techniques are used to the extent TI deems necessary to support this warranty. Except where mandated by government requirements, testing of all parameters of each product is not necessarily performed.

TI assumes no liability for applications assistance or customer product design. Customers are responsible for their products and applications using TI components. To minimize the risks associated with customer products and applications, customers should provide adequate design and operating safeguards.

TI does not warrant or represent that any license, either express or implied, is granted under any TI patent right, copyright, mask work right, or other TI intellectual property right relating to any combination, machine, or process in which TI products or services are used. Information published by TI regarding third-party products or services does not constitute a license from TI to use such products or services or a warranty or endorsement thereof. Use of such information may require a license from a third party under the patents or other intellectual property of the third party, or a license from TI under the patents or other intellectual property of TI.

Reproduction of TI information in TI data books or data sheets is permissible only if reproduction is without alteration and is accompanied by all associated warranties, conditions, limitations, and notices. Reproduction of this information with alteration is an unfair and deceptive business practice. TI is not responsible or liable for such altered documentation. Information of third parties may be subject to additional restrictions.

Resale of TI products or services with statements different from or beyond the parameters stated by TI for that product or service voids all express and any implied warranties for the associated TI product or service and is an unfair and deceptive business practice. TI is not responsible or liable for any such statements.

TI products are not authorized for use in safety-critical applications (such as life support) where a failure of the TI product would reasonably be expected to cause severe personal injury or death, unless officers of the parties have executed an agreement specifically governing such use. Buyers represent that they have all necessary expertise in the safety and regulatory ramifications of their applications, and acknowledge and agree that they are solely responsible for all legal, regulatory and safety-related requirements concerning their products and any use of TI products in such safety-critical applications, notwithstanding any applications-related information or support that may be provided by TI. Further, Buyers must fully indemnify TI and its representatives against any damages arising out of the use of TI products in such safety-critical applications.

TI products are neither designed nor intended for use in military/aerospace applications or environments unless the TI products are specifically designated by TI as military-grade or "enhanced plastic." Only products designated by TI as military-grade meet military specifications. Buyers acknowledge and agree that any such use of TI products which TI has not designated as military-grade is solely at the Buyer's risk, and that they are solely responsible for compliance with all legal and regulatory requirements in connection with such use.

TI products are neither designed nor intended for use in automotive applications or environments unless the specific TI products are designated by TI as compliant with ISO/TS 16949 requirements. Buyers acknowledge and agree that, if they use any non-designated products in automotive applications, TI will not be responsible for any failure to meet such requirements.

Following are URLs where you can obtain information on other Texas Instruments products and application solutions:

### Products

Audio	<a href="http://www.ti.com/audio">www.ti.com/audio</a>
Amplifiers	<a href="http://amplifier.ti.com">amplifier.ti.com</a>
Data Converters	<a href="http://dataconverter.ti.com">dataconverter.ti.com</a>
DLP® Products	<a href="http://www.dlp.com">www.dlp.com</a>
DSP	<a href="http://dsp.ti.com">dsp.ti.com</a>
Clocks and Timers	<a href="http://www.ti.com/clocks">www.ti.com/clocks</a>
Interface	<a href="http://interface.ti.com">interface.ti.com</a>
Logic	<a href="http://logic.ti.com">logic.ti.com</a>
Power Mgmt	<a href="http://power.ti.com">power.ti.com</a>
Microcontrollers	<a href="http://microcontroller.ti.com">microcontroller.ti.com</a>
RFID	<a href="http://www.ti-rfid.com">www.ti-rfid.com</a>
OMAP Mobile Processors	<a href="http://www.ti.com/omap">www.ti.com/omap</a>
Wireless Connectivity	<a href="http://www.ti.com/wirelessconnectivity">www.ti.com/wirelessconnectivity</a>

### Applications

Communications and Telecom	<a href="http://www.ti.com/communications">www.ti.com/communications</a>
Computers and Peripherals	<a href="http://www.ti.com/computers">www.ti.com/computers</a>
Consumer Electronics	<a href="http://www.ti.com/consumer-apps">www.ti.com/consumer-apps</a>
Energy and Lighting	<a href="http://www.ti.com/energy">www.ti.com/energy</a>
Industrial	<a href="http://www.ti.com/industrial">www.ti.com/industrial</a>
Medical	<a href="http://www.ti.com/medical">www.ti.com/medical</a>
Security	<a href="http://www.ti.com/security">www.ti.com/security</a>
Space, Avionics and Defense	<a href="http://www.ti.com/space-avionics-defense">www.ti.com/space-avionics-defense</a>
Transportation and Automotive	<a href="http://www.ti.com/automotive">www.ti.com/automotive</a>
Video and Imaging	<a href="http://www.ti.com/video">www.ti.com/video</a>

TI E2E Community Home Page

[e2e.ti.com](http://e2e.ti.com)

Mailing Address: Texas Instruments, Post Office Box 655303, Dallas, Texas 75265  
Copyright © 2011, Texas Instruments Incorporated