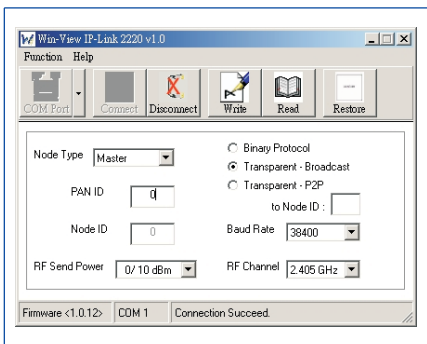




Powerful, Reliable & Flexible Wireless Networking

Simplify Product Development & Speed Time-to-Market

WirelessPlug's highly integrated IP-Link 2000 & 2220 Terminals comes in 915MHz or IEEE802.15.4-compliant 2.4GHz versions to operate in regional or global ISM bands. Along with Helicomm's WIN-View Networking Software, IP-Link M2M Terminals enable out of the box capability for building, testing and monitoring wireless networks. The compact and flexible IP-Link Terminals offer the quickest and easiest path to standards-based wireless networking, translating to shorter time-to-market in the development of your wireless M2M enabled product.



Networking Management Software

Industry-Leading RS232 / RS485 Wireless Platform

IP-Link 2000 & 2220 Terminals function in an innovative, industry-standard RS232 / RS485 mode that enables customers to seamlessly and reliably route wirelessly serial data streams of up to 38.4Kbps. If a network link is experiencing RF interference or interruption, the IP-Link Terminals will automatically re-route the data traffic

over an alternate path. IP-Link Terminals provide cost-effective wireless communications of serial data streams over point-to-point and point-to-multipoint configurations, and create simple wireless connectivity solutions for PC and other peripheral devices.

Ideal for Remote Monitoring & Control Applications

IP-Link 2000 & 2220 M2M Terminals are best suited for low-data-rate applications, and are ideal solutions for data acquisition, remote monitoring and control. Examples include Building or Home Automation, Medical Monitoring, Environmental Monitoring, Traffic Data Acquisition, Access Control, Safety and Automated Meter Reading.

Seamless Integration of ZigBee with GPRS/CDMA

WirelessPlug's IP-Link 2000 & 2220 Terminals allow you to implement and best test both simple point-to-point and sophisticated mesh networks, to facilitate remotely monitor and control functions for a wide variety of industry applications. In addition to short-range wireless networking, the IP-Link Terminals can be connected to WirelessPlug's GPRS/ CDMA Terminal family to provide global monitor and control expansion of your W-PAN built with Wireless-Plug's M2M terminals.



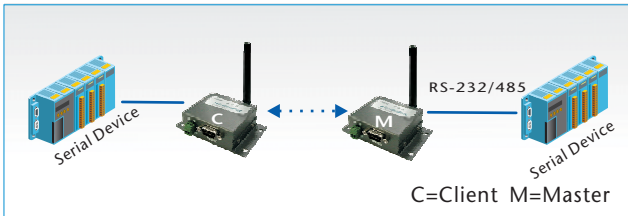
IP-Link 2000 & 2220 Network Terminals available in 915MHz or 2.4GHz

Main Features

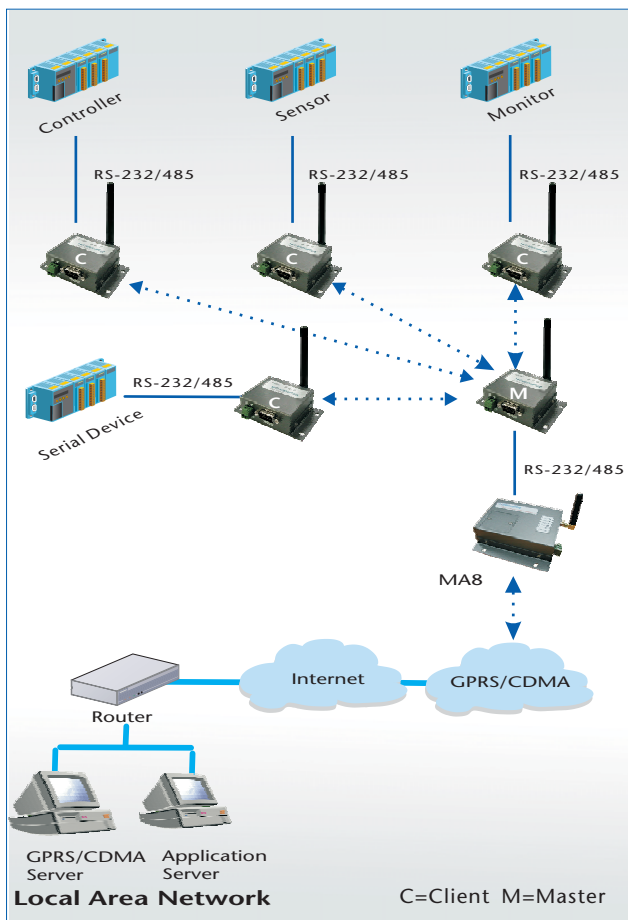
- Highly-reliable, ultra low power M2M serial Terminals
- Out-of-the-box prototyping of wireless networks from industry-standard RS232/RS485 serial ports
- ZigBee-based serial data communications featuring mesh and multi-hop networking
- Three LEDs indicate power and signal status
- Total M2M solution enables integration of ZigBee technology with GPRS/CDMA
- Easy-to-use WIN-View™ Networking Management Software for building, testing and monitoring custom ZigBee Networks
- Full product documentations

Helicomm's IP-Link 2000 and 2220 Terminals are now shipping. The complete product IDs are as following:

915MHz: IP-Link 2000-1061
2.4GHz: IP-Link 2220-2134



IP-Link 2000 & 2220 Terminals Support Point-to-Point Topology



Integration of ZigBee Technology with GPRS / CDMA Provides Global Monitor and Control Extension of Local Wireless Networks

IP-Link 2000 & 2220 Specifications

	915MHz IP-Link 2000	2.4GHz IP-Link 2220
RF		
Frequency	915MHz unlicensed ISM band	2.4GHz unlicensed ISM band
Modulation	FSK	QPSK
Max.data rate	76Kbps	250 Kbps
Receive Sensitivity	-96dBm	-94dBm
Transmit range	150m(LOS)	400m (LOS)
RF channels	7	16(5MHz)
Transmit power	-20dBm to 0dBm	-14dBm to 10dBm
Power consumption		
Transmit	32mA	55mA+45mA
Receive	27mA	55mA+45mA
Sleep	<250uA	25uA
Data encryption	56-bit DES	32,64,128-bit AES
Certification	FCC	FCC, 802.15.4, ZCP
Microcontroller		
Type	8051- Compatible	8051-compatible
I/O		
Serial	RS-232/RS-485	RS-232/RS-485
Physical / Environmental		
Power		
DC-Input	9VDC – 30VDC	9VDC – 30VDC
Power consumption	0.2W	0.2W
Size W x H x D		
Inches	2.4 x 2.1 x 1.0	2.4 x 2.1 x 1.2
Cm	6.2 x 5.4 x 2.5	6.2 x 5.4 x 3.6
Operating temp.	-20°C to +70°C	-20°C to +70°C
Humidity	10% to 90%	10% to 90%



Contact Helicomm for more technical and pricing information:

1947 Camino Vida Roble, Suite 109 • Carlsbad, CA 92008 • 760-918-0856 • www.helicomm.com